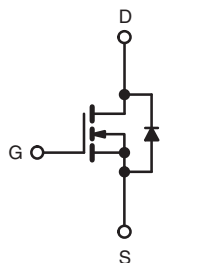
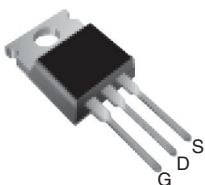


## Power MOSFET

### PRODUCT SUMMARY

|                           |                        |      |
|---------------------------|------------------------|------|
| $V_{DS}$ (V)              | 50                     |      |
| $R_{DS(on)}$ ( $\Omega$ ) | $V_{GS} = 10\text{ V}$ | 0.10 |
| $Q_g$ (Max.) (nC)         | 17                     |      |
| $Q_{gs}$ (nC)             | 9.0                    |      |
| $Q_{gd}$ (nC)             | 3.0                    |      |
| Configuration             | Single                 |      |

**TO-220AB**


N-Channel MOSFET

### FEATURES

- Extremely Low  $R_{DS(on)}$
- Compact Plastic Package
- Fast Switching
- Low Drive Current
- Ease of Paralleling
- Excellent Temperature Stability
- Parts Per Million Quality
- Compliant to RoHS Directive 2002/95/EC



Available

**RoHS\***  
COMPLIANT

### DESCRIPTION

The technology has expanded its product base to serve the low voltage, very low  $R_{DS(on)}$  MOSFET transistor requirements. Vishay's highly efficient geometry and unique processing have been combined to create the lowest on resistance per device performance. In addition to this feature all have documented reliability and parts per million quality!

The transistor also offer all of the well established advantages of MOSFETs such as voltage control, very fast switching, ease of paralleling, and temperature stability of the electrical parameters.

They are well suited for applications such as switching power supplies, motor controls, inverters, choppers, audio amplifiers, high energy pulse circuits, and in systems that are operated from low voltage batteries, such as automotive, portable equipment, etc.

### ORDERING INFORMATION

|                |                         |
|----------------|-------------------------|
| Package        | TO-220AB                |
| Lead (Pb)-free | IRFZ20PbF<br>SiHFZ20-E3 |
| SnPb           | IRFZ20<br>SiHFZ20       |

### ABSOLUTE MAXIMUM RATINGS

| PARAMETER  | SYMBOL           | LIMIT                             | UNIT                |
|--|------------------|-----------------------------------|---------------------|
| Drain-Source Voltage <sup>a</sup>                | $V_{DS}$         | 50                                | V                   |
| Gate-Source Voltage <sup>a</sup>                 | $V_{GS}$         | $\pm 20$                          |                     |
| Continuous Drain Current                         | $V_{GS}$ at 10 V | $T_C = 25\text{ }^\circ\text{C}$  | A                   |
|  |                  | $T_C = 100\text{ }^\circ\text{C}$ |                     |
| Pulsed Drain Current <sup>b</sup>                | $I_{DM}$         | 60                                |                     |
| Single Pulse Avalanche Energy <sup>c</sup>       | $E_{AS}$         | 5                                 | mJ                  |
| Linear Derating Factor (see fig. 16)             |                  | 0.32                              | W/ $^\circ\text{C}$ |
| Maximum Power Dissipation (see fig. 16)          | $P_D$            | 40                                | W                   |
| Operating Junction and Storage Temperature Range | $T_J, T_{stg}$   | - 55 to + 150                     | $^\circ\text{C}$    |
| Soldering Recommendations (Peak Temperature)     | for 10 s         | 300 (0.063" (1.6 mm) from case    |                     |

#### Notes

a.  $T_J = 25\text{ }^\circ\text{C}$  to  $150\text{ }^\circ\text{C}$

b. Repetitive rating: Pulse width limited by max. junction temperature. See transient temperature impedance curve (see fig. 11).

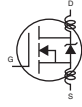
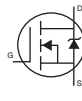
c. Starting  $T_J = 25\text{ }^\circ\text{C}$ ,  $L = 0.07\text{ mH}$ ,  $R_g = 25\text{ }\Omega$ ,  $I_{AS} = 12\text{ A}$

\* Pb containing terminations are not RoHS compliant, exemptions may apply

**THERMAL RESISTANCE RATINGS**

| PARAMETER  | SYMBOL     | TYP. | MAX. | UNIT |
|--|------------|------|------|------|
| Typical Socket Mount, Junction-to-Ambient                | $R_{thJA}$ | -    | 80   | °C/W |
| Case-to-Sink, Mounting Surface Flat, Smooth, and Greased | $R_{thCS}$ | 1.0  | -    |      |
| Junction-to-Case   | $R_{thJC}$ | -    | 3.12 |      |

**ELECTRICAL CHARACTERISTICS** ( $T_J = 25\text{ }^{\circ}\text{C}$ , unless otherwise noted)

| PARAMETER                                     | SYMBOL              | TEST CONDITIONS   |  | MIN. | TYP.  | MAX.  | UNIT |
|---|---------------------|---|--|------|-------|-------|------|
| Static  |                     |   |  |      |       |       |      |
| Drain-Source Breakdown Voltage                | V <sub>DS</sub>     | V <sub>GS</sub> = 0 V, I <sub>D</sub> = 250 μA  |  | 50   | -     | -     | V    |
| Gate-Source Threshold Voltage                 | V <sub>GS(th)</sub> | V <sub>DS</sub> = V <sub>GS</sub> , I <sub>D</sub> = 250 μA   |  | 2.0  | -     | 4.0   | V    |
| Gate-Source Leakage                           | I <sub>GSS</sub>    | V <sub>GS</sub> = ± 20 V  |  | -    | -     | ± 500 | nA   |
| Zero Gate Voltage Drain Current               | I <sub>DSS</sub>    | V <sub>DS</sub> > Max. Rating, V <sub>GS</sub> = 0 V  |  | -    | -     | 250   | μA   |
|   |                     | V <sub>DS</sub> = Max. Rating x 0.8, V <sub>GS</sub> = 0 V, T <sub>C</sub> = 125 °C   |  | -    | -     | 1000  |      |
| On-State Drain Current                        | I <sub>D(on)</sub>  | V <sub>GS</sub> = 10 V  | V <sub>DS</sub> > I <sub>D(on)</sub> x R <sub>DS(on)</sub> max.  | -    | -     | 15    | A    |
| Drain-Source On-State Resistance <sup>b</sup> | R <sub>DS(on)</sub> | V <sub>GS</sub> = 10 V  | I <sub>D</sub> = 10 A  | -    | 0.080 | 0.10  | Ω    |
| Forward Transconductance <sup>b</sup>         | g <sub>fs</sub>     | V <sub>DS</sub> > I <sub>D(on)</sub> x R <sub>DS(on)</sub> max., I <sub>D</sub> = 9.0 A   |  | 5.0  | 6.0   | -     | S    |
| Dynamic                                       |                     |   |  |      |       |       |      |
| Input Capacitance                             | C <sub>iss</sub>    | V <sub>GS</sub> = 0 V,<br>V <sub>DS</sub> = 25 V,<br>f = 1.0 MHz, see fig. 11   |  | -    | 560   | 860   | pF   |
| Output Capacitance                            | C <sub>oss</sub>    |   |  | -    | 250   | 350   |      |
| Reverse Transfer Capacitance                  | C <sub>rss</sub>    |   |  | -    | 60    | 100   |      |
| Total Gate Charge                             | Q <sub>g</sub>      | V <sub>GS</sub> = 10 V  | I <sub>D</sub> = 20 A, V <sub>DS</sub> = 0.8 max. rating, see fig. 18 for test circuit (Gate charge is essentially independent of operating temperature) | -    | 12    | 17    | nC   |
| Gate-Source Charge                            | Q <sub>gs</sub>     |   |  | -    | 9.0   | -     |      |
| Gate-Drain Charge                             | Q <sub>gd</sub>     |   |  | -    | 3.0   | -     |      |
| Turn-On Delay Time                            | t <sub>d(on)</sub>  | V <sub>DD</sub> = 25 V, I <sub>D</sub> = 9.0 A,<br>Z <sub>0</sub> = 50 Ω, see fig. 5 <sup>b</sup>   |  | -    | 15    | 30    | ns   |
| Rise Time                                     | t <sub>r</sub>      |   |  | -    | 45    | 90    |      |
| Turn-Off Delay Time                           | t <sub>d(off)</sub> |   |  | -    | 20    | 40    |      |
| Fall Time                                     | t <sub>f</sub>      |   |  | -    | 15    | 30    |      |
| Internal Drain Inductance                     | L <sub>D</sub>      | Modified MOSFET symbol showing the internal device inductances<br>      |  | -    | 3.5   | -     | nH   |
| Internal Source Inductance                    | L <sub>S</sub>      |   |  | -    | 4.5   | -     |      |
| Drain-Source Body Diode Characteristics       |                     |   |  |      |       |       |      |
| Continuous Source-Drain Diode Current         | I <sub>S</sub>      | MOSFET symbol showing the integral reverse p - n junction rectifier<br> |  | -    | -     | 15    | A    |
| Pulsed Diode Forward Current <sup>a</sup>     | I <sub>SM</sub>     |   |  | -    | -     | 60    |      |
| Body Diode Voltage <sup>b</sup>               | V <sub>SD</sub>     | T <sub>C</sub> = 25 °C, I <sub>S</sub> = 15 A, V <sub>GS</sub> = 0 V  |  | -    | -     | 1.5   | V    |
| Body Diode Reverse Recovery Time              | t <sub>rr</sub>     | T <sub>J</sub> = 150 °C, I <sub>F</sub> = 15 A, dI <sub>F</sub> /dt = 100 A/μs  |  | -    | 100   | -     | ns   |
| Body Diode Reverse Recovery Charge            | Q <sub>rr</sub>     |   |  | -    | 0.4   | -     | μC   |
| Forward Turn-On Time                          | t <sub>on</sub>     | Intrinsic turn-on time is negligible (turn-on is dominated by L <sub>S</sub> and L <sub>D</sub> )   |  |      |       |       |      |

**Notes**

- a. Repetitive rating: Pulse width limited by max. junction temperature. See transient temperature impedance curve (see fig. 5).  
b. Pulse test: Pulse width  $\leq 300\text{ }\mu\text{s}$ ; duty cycle  $\leq 2\%$ .

## TYPICAL CHARACTERISTICS (25 °C, unless otherwise noted)

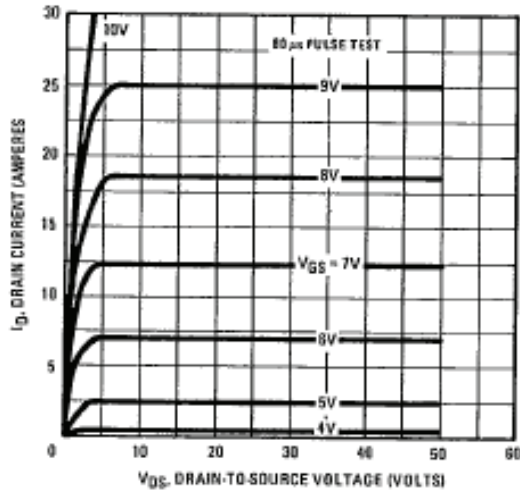


Fig. 1 - Typical Output Characteristics

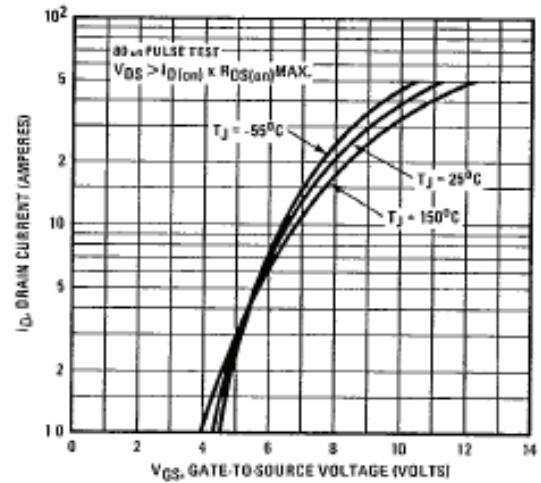


Fig. 3 - Typical Transfer Characteristics

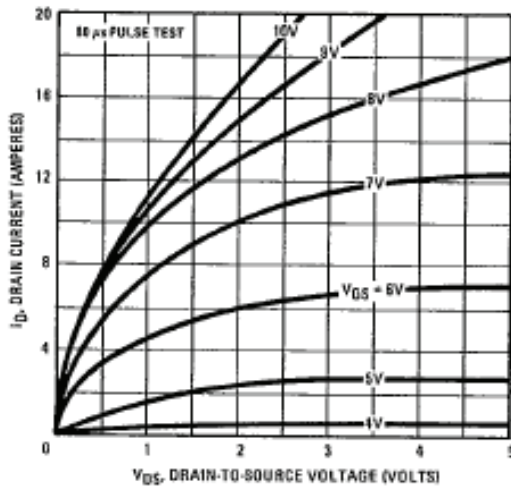


Fig. 2 - Typical Saturation Characteristics

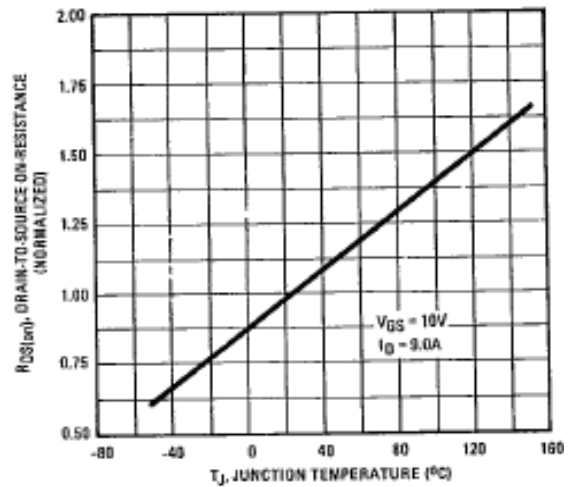


Fig. 4 - Normalized On-Resistance vs. Temperature

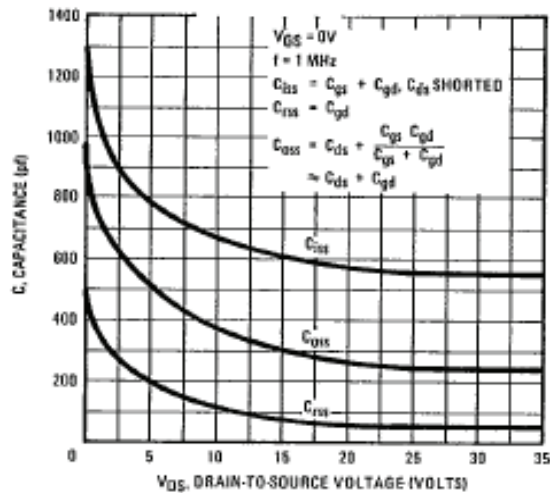


Fig. 5 - Typical Capacitance vs. Drain-to-Source Voltage

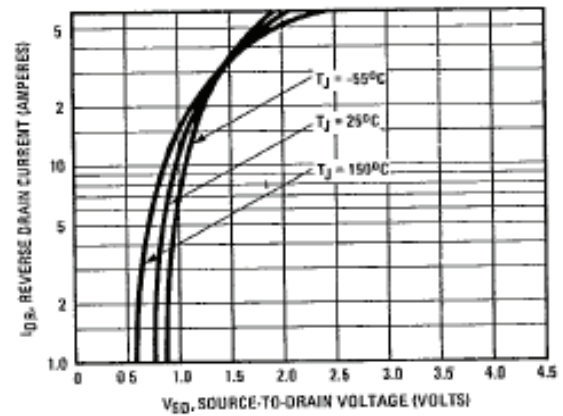


Fig. 7 - Typical Source-Drain Diode Forward Voltage

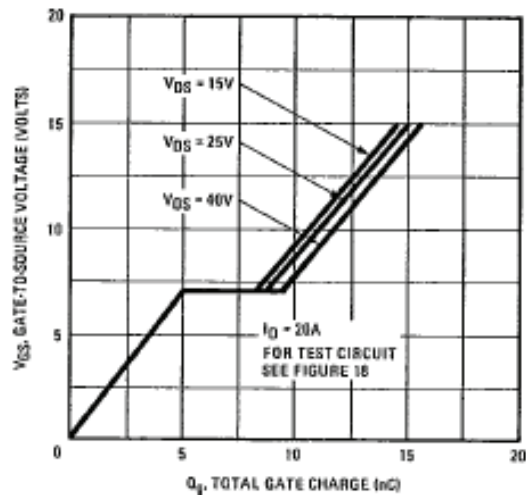


Fig. 6 - Typical Gate Charge vs. Gate-to-Source Voltage

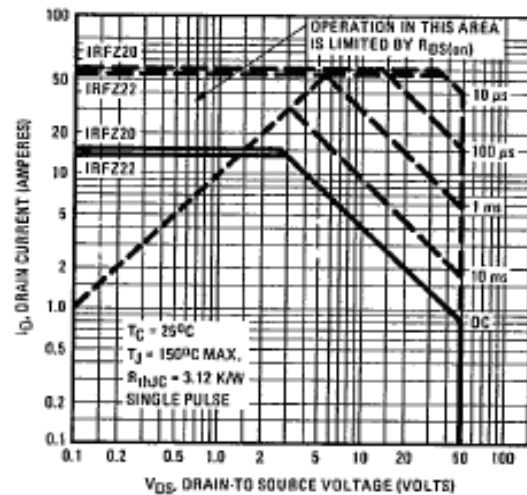


Fig. 8 - Maximum Safe Operating Area

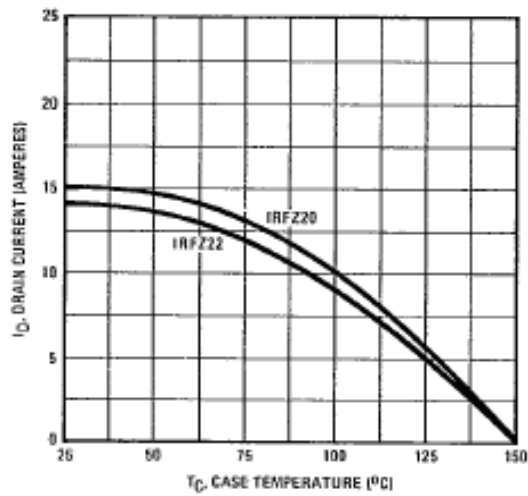


Fig. 9 - Maximum Drain Current vs. Case Temperature

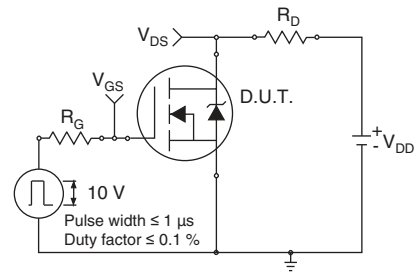


Fig. 10a - Switching Time Test Circuit

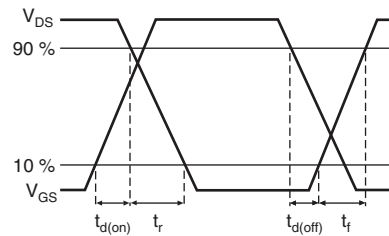


Fig. 10b - Switching Time Waveforms

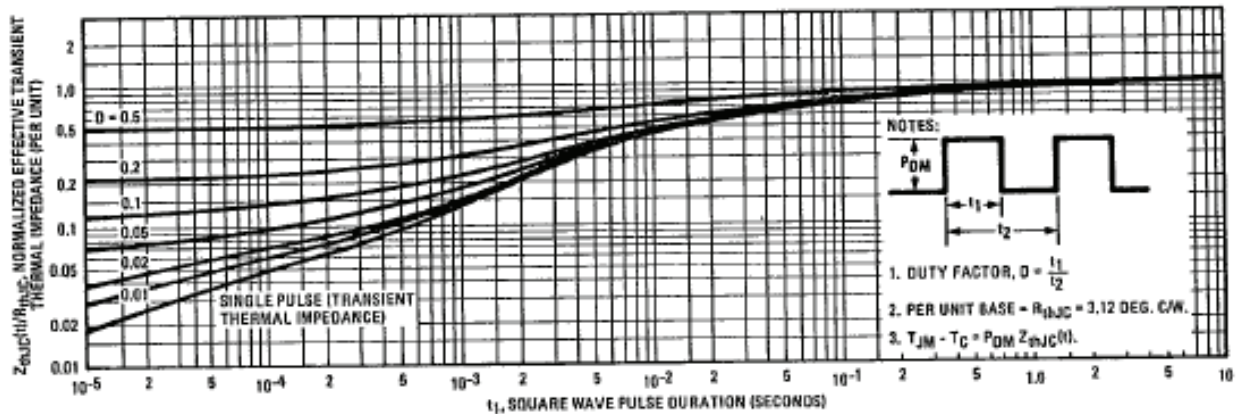


Fig. 11 - Maximum Effective Transient Thermal Impedance, Junction-to-Case vs. Pulse Duration

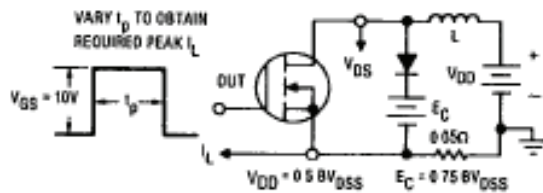


Fig. 12a - Clamped Inductive Test Circuit

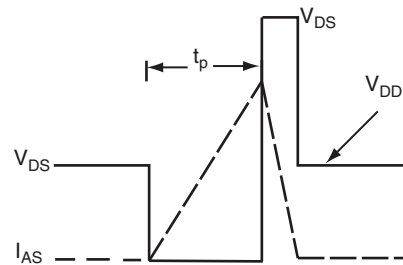


Fig. 12b - Unclamped Inductive Waveforms

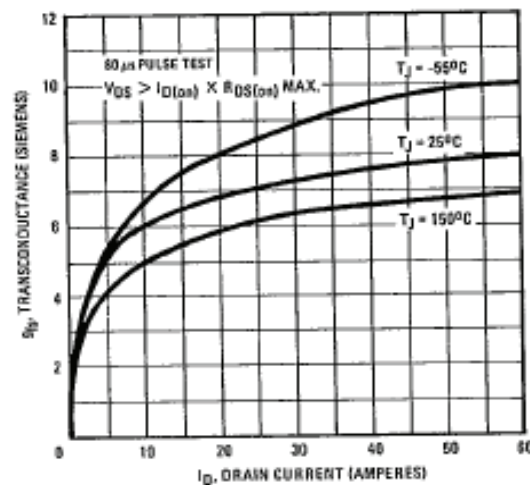


Fig. 13 - Typical Transconductance vs. Drain Current

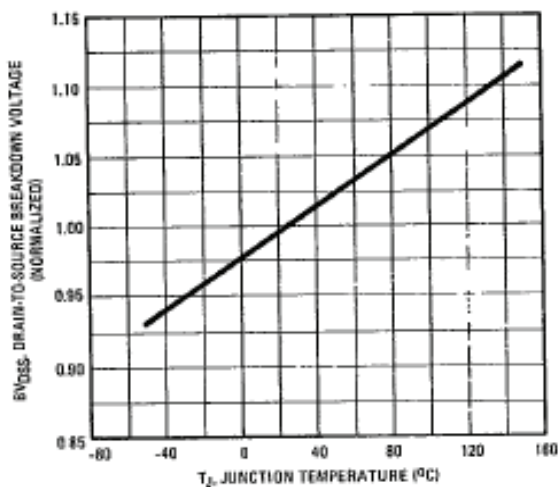


Fig. 14 - Breakdown Voltage vs. Temperature

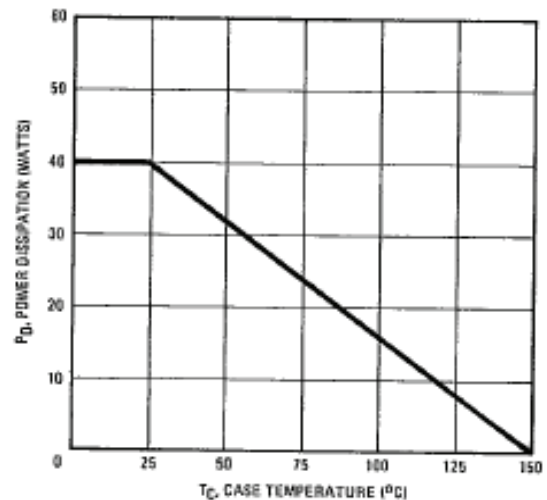


Fig. 16 - Power vs. Temperature Derating Curve

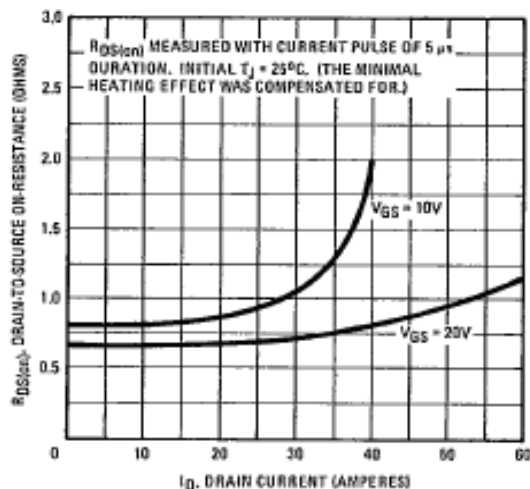


Fig. 15 - Typical On-Resistance vs. Drain Current

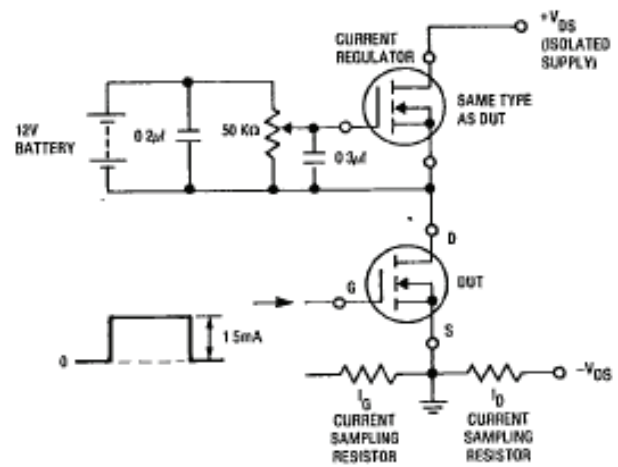
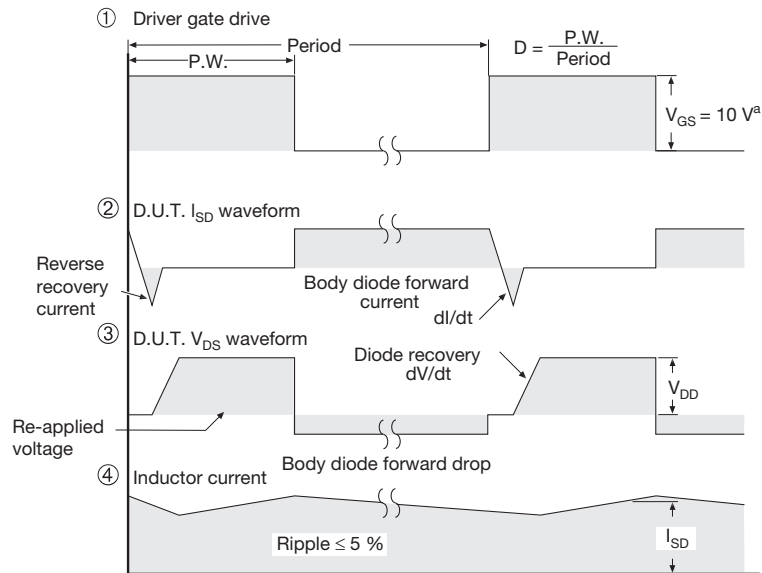
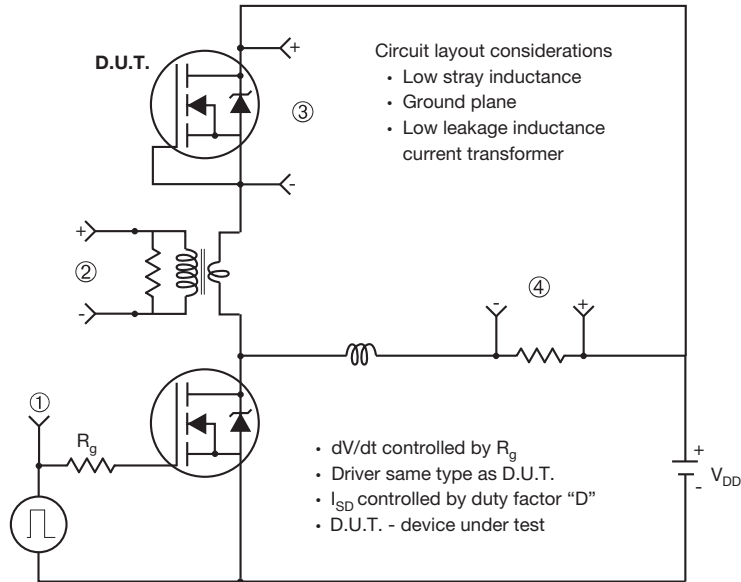


Fig. 17 - Gate Charge Test Circuit

## Peak Diode Recovery dV/dt Test Circuit



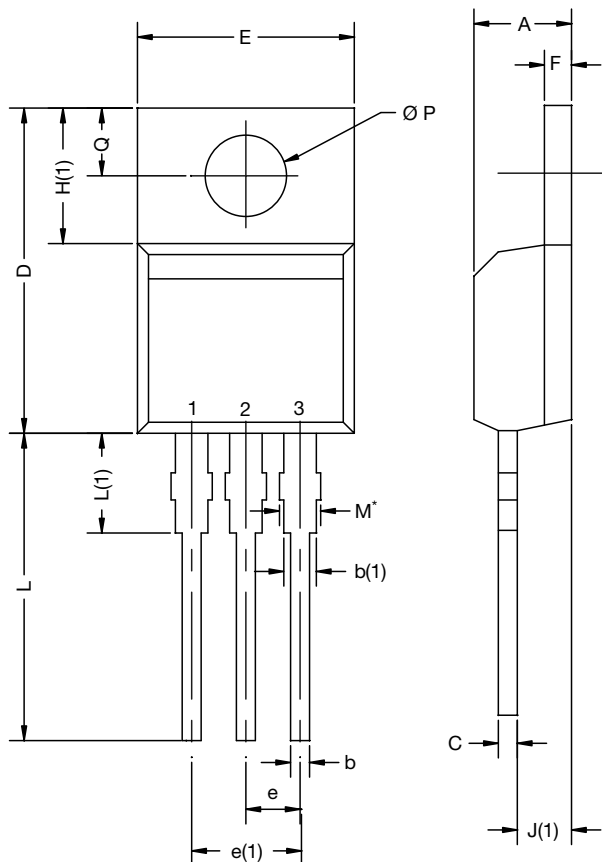
### Note

a.  $V_{GS} = 5\text{ V}$  for logic level devices

**Fig. 14 - For N-Channel**



## TO-220-1



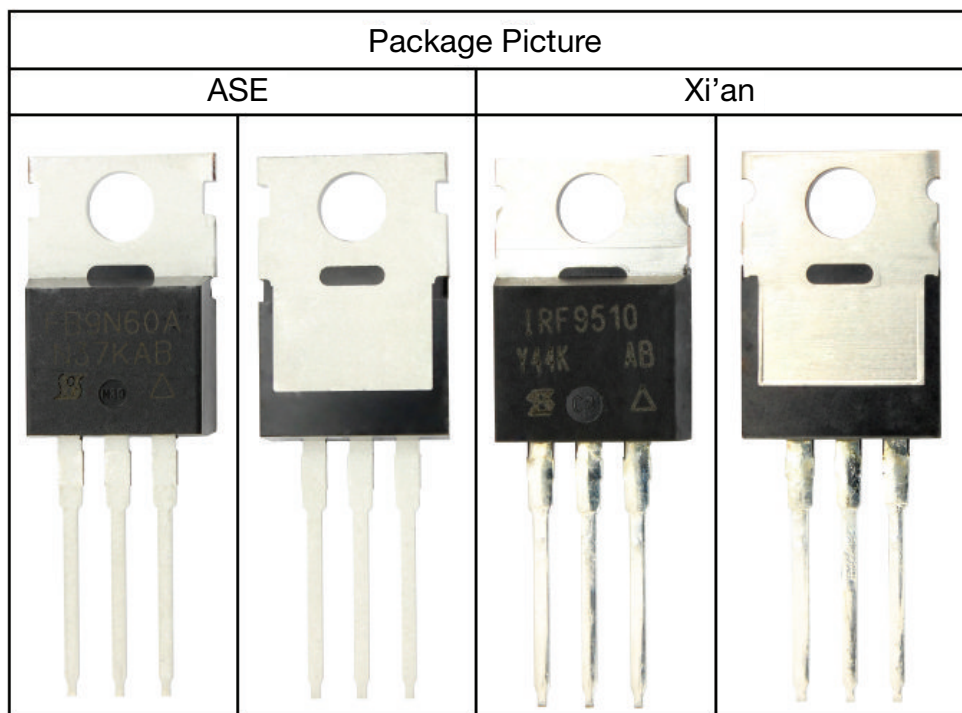
| DIM.            | MILLIMETERS |       | INCHES |       |
|-----------------|-------------|-------|--------|-------|
|                 | MIN.        | MAX.  | MIN.   | MAX.  |
| A               | 4.24        | 4.65  | 0.167  | 0.183 |
| b               | 0.69        | 1.02  | 0.027  | 0.040 |
| b(1)            | 1.14        | 1.78  | 0.045  | 0.070 |
| c               | 0.36        | 0.61  | 0.014  | 0.024 |
| D               | 14.33       | 15.85 | 0.564  | 0.624 |
| E               | 9.96        | 10.52 | 0.392  | 0.414 |
| e               | 2.41        | 2.67  | 0.095  | 0.105 |
| e(1)            | 4.88        | 5.28  | 0.192  | 0.208 |
| F               | 1.14        | 1.40  | 0.045  | 0.055 |
| H(1)            | 6.10        | 6.71  | 0.240  | 0.264 |
| J(1)            | 2.41        | 2.92  | 0.095  | 0.115 |
| L               | 13.36       | 14.40 | 0.526  | 0.567 |
| L(1)            | 3.33        | 4.04  | 0.131  | 0.159 |
| $\varnothing P$ | 3.53        | 3.94  | 0.139  | 0.155 |
| Q               | 2.54        | 3.00  | 0.100  | 0.118 |

ECN: X15-0364-Rev. C, 14-Dec-15  
DWG: 6031

### Note

- M\* = 0.052 inches to 0.064 inches (dimension including protrusion), heatsink hole for HVM

## Package Picture







## Disclaimer

ALL PRODUCT, PRODUCT SPECIFICATIONS AND DATA ARE SUBJECT TO CHANGE WITHOUT NOTICE TO IMPROVE RELIABILITY, FUNCTION OR DESIGN OR OTHERWISE.

Vishay Intertechnology, Inc., its affiliates, agents, and employees, and all persons acting on its or their behalf (collectively, "Vishay"), disclaim any and all liability for any errors, inaccuracies or incompleteness contained in any datasheet or in any other disclosure relating to any product.

Vishay makes no warranty, representation or guarantee regarding the suitability of the products for any particular purpose or the continuing production of any product. To the maximum extent permitted by applicable law, Vishay disclaims (i) any and all liability arising out of the application or use of any product, (ii) any and all liability, including without limitation special, consequential or incidental damages, and (iii) any and all implied warranties, including warranties of fitness for particular purpose, non-infringement and merchantability.

Statements regarding the suitability of products for certain types of applications are based on Vishay's knowledge of typical requirements that are often placed on Vishay products in generic applications. Such statements are not binding statements about the suitability of products for a particular application. It is the customer's responsibility to validate that a particular product with the properties described in the product specification is suitable for use in a particular application. Parameters provided in datasheets and / or specifications may vary in different applications and performance may vary over time. All operating parameters, including typical parameters, must be validated for each customer application by the customer's technical experts. Product specifications do not expand or otherwise modify Vishay's terms and conditions of purchase, including but not limited to the warranty expressed therein.

Except as expressly indicated in writing, Vishay products are not designed for use in medical, life-saving, or life-sustaining applications or for any other application in which the failure of the Vishay product could result in personal injury or death. Customers using or selling Vishay products not expressly indicated for use in such applications do so at their own risk. Please contact authorized Vishay personnel to obtain written terms and conditions regarding products designed for such applications.

No license, express or implied, by estoppel or otherwise, to any intellectual property rights is granted by this document or by any conduct of Vishay. Product names and markings noted herein may be trademarks of their respective owners.