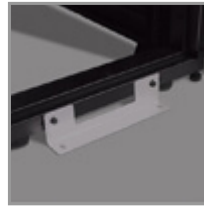
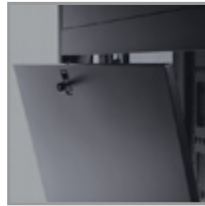


42U SmartRack Deep and Wide Rack Enclosure Cabinet with doors & side panels

MODEL NUMBER: SR42UBDPWD



Description

A DEEP and WIDE version of our standard 42U SmartRack. This enclosure is 1143mm deep (45") compared to the standard 1070mm deep (42"). This extra depth allows for high density equipment installations. It allows extra space for moving the cable management back as well as providing space for mounted equipment that has hot-swap, removable power supplies out the back of the enclosure. It is also 750mm wide (30") compared to the standard 600mm wide (24"). This extra width allows for high density equipment installations. It allows cable management and PDU mounting off to the sides of the rack in order to keep these items out of the airflow for proper cooling. All features from the standard SmartRacks carry over to these wide racks to allow cross usage of accessories.

Features

- Ships fully assembled for rapid deployment and roll into place on heavy-duty pre-installed casters.
- Front and rear sets of equipment mounting rails adjust in 1/4" increments. Adjustment is quick and convenient. The easy-view depth index ensures consistent rail placement without requiring time-consuming measurements.
- Toolless accessory mounting rails (2 rails per enclosure) include slots for quick installation of compatible PDUs and vertical cable managers. Mounting slots are arranged in an industry-standard pattern compatible with a wide variety of accessories. Each rail can accommodate two vertical PDUs or cable managers side-by-side (four items per enclosure).
- Enclosure includes mounting hardware of 50 pieces of M6 cage nuts and 50 pieces of M6 screws
- Textured powder coat finish for tough resistance to environmental concerns such as deployment in warehouses.
- Massive front to rear ventilation capacity. 65+% open space in door perforation pattern meets or exceeds server manufacturer requirements.
- Maximum usable internal depth of 42 inches/1070mm (front to rear rail).
- Weight ratings of 3000 lb stationary and 2250 lb rolling.

Highlights

- 45" (1143mm) depth for extra space need for mounting deep equipment
- 30" (750mm) width for optimizing airflow through cabinet
- Ships fully assembled
- 3000 lb stationary / 2250 lb rolling load capacity
- Locking, removable, reversible front and rear doors; Locking, removable side panels keyed alike with doors
- Pre-installed casters and leveling feet; Rolls through standard 7 foot doorway
- Meets all enclosure requirements towards PCI DSS (Payment Card Industry Data Security Standard) Compliance

Package Includes

- SR42UBDPWD Rack Enclosure
- (4) Side panels
- (4) Side panel locks
- (2) Door & side panel keys
- (50) M6 screws
- (50) M6 cage nuts
- (50) M6 washers
- Owner's Manual



Tripp Lite
1111 W. 35th Street
Chicago, IL 60609 USA
Telephone: 773.869.1234
www.tripplite.com

- Front door is locking, reversible and removable.
- Rear doors are locking and reversible. Split rear door design reduces clearance requirements for service entry allowing the enclosure to be placed closer to a wall.
- Locking removable side panels are 'half size' to make them smaller and lighter improving ease of installation and servicing. Two side panels per side (4 panels total). Side panels are keyed alike to the front and rear doors.
- Built in baying tabs allow enclosures to be combined securely in rows. Center-to-center width can be set at 750mm or 30".
- Casters are pre-installed and support a rolling load capacity of 2250 lbs, allowing the enclosures to be pre-configured and rolled to the final installation location. Casters are removable.
- Leveling feet extend to allow enclosure to be positioned on uneven floors. Levelers are removable.
- Compact design allows the enclosure to roll through standard height commercial doorways.
- Convenient grounding system. All components are grounded to the enclosure frame which includes multiple connections for facility ground. Front and rear doors include quick-release ground wires.
- Open bottom for cable access.
- Top panel has generous cable access holes. Panel can be removed toollessly in seconds without having to disconnect cables first.
- Included stabilizing brackets are used for shipment and can be reattached at the bottom of the enclosure frame on the inside or outside of the rack.
- Meets all enclosure requirements towards PCI DSS (Payment Card Industry Data Security Standard) Compliance
- Compatibility with airflow optimization accessories as well as cable management accessories.

Specifications

OVERVIEW	
UPC Code	037332154484
Rack Type	Enclosure
PHYSICAL	
Color	Black
Factory Preset Rack Depth (cm)	71.4
Factory Preset Rack Depth (in.)	28.125
Factory Preset Rack Depth (mm)	714
Maximum Device Depth (cm)	106.68
Maximum Device Depth (in.)	42
Maximum Device Depth (mm)	1,067



Tripp Lite
1111 W. 35th Street
Chicago, IL 60609 USA
Telephone: 773.869.1234
www.tripplite.com

Minimum Device Depth (cm)	10.16
Minimum Device Depth (in.)	4
Minimum Device Depth (mm)	102
Rack Height	42U
Shipping Dimensions (hwd / cm)	215.90 x 84.46 x 126.36
Shipping Dimensions (hwd / in.)	85.00 x 33.25 x 49.75
Shipping Weight (kg)	183.25
Shipping Weight (lbs.)	404.00
Unit Dimensions (hwd / cm)	199.39 x 75.2602 x 123.19
Unit Dimensions (hwd / in.)	78.5 x 29.63 x 48.50
Unit Weight (kg)	156.49
Unit Weight (lbs.)	345
Weight Capacity - Rolling (kg)	1,021
Weight Capacity - Rolling (lbs.)	2250
Weight Capacity - Stationary (kg)	1,361
Weight Capacity - Stationary (lbs.)	3000
Rack Depth	Deep
SPECIAL FEATURES	
Grounding Lug	Front and Back door frames
Built-in Cable Management	Yes
Extra Wide	Yes
STANDARDS & COMPLIANCE	
Certifications	UL60950; RoHS, CE; IP20 Protection Rating
Approvals	EIA/ECA-310-E
WARRANTY	
Product Warranty Period (Worldwide)	5-year limited warranty

© 2020 Tripp Lite. All rights reserved. All product and company names are trademarks or registered trademarks of their respective holders. Use of them does not imply any affiliation with or endorsement by them. Tripp Lite has a policy of continuous improvement. Specifications are subject to change without notice. Tripp Lite uses primary and third-party agencies to test its products for compliance with standards. See a list of Tripp Lite's testing agencies: <https://www.tripplite.com/products/product-certification-agencies>