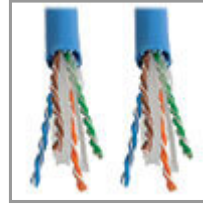


Cat6 Gigabit Bulk UTP Solid-Core Plenum-Rated CMP Cable, Blue, 1000 ft.

MODEL NUMBER: N224-01K-BL



Premium high-speed cabling designed for Cat6 premise (in-wall) applications in air ducts and drop ceilings, such as the distribution of data, voice and digital video across Gigabit Ethernet networks.

Description

The N224-01K-BL Cat6 Gigabit Bulk Solid-Core Plenum-Rated CMP Cable is premium high-speed cabling designed for Cat6 premise applications in air ducts and drop ceilings, such as the distribution of data, voice and digital video across Gigabit Ethernet networks. Designed for fast transmission and excellent signal quality, this blue cable ensures peak performance through your LAN (local area network).

Manufactured from 23 AWG copper wire, the four-pair solid UTP N224-01K-BL delivers speeds up to 550 MHz/1 Gbps. Protected by a plenum-rated CMP jacket, this cable keeps near-end crosstalk levels to a minimum. It's ideal for 10/100/1000 Base-T Ethernet, 100 Mbps TPDDI, 155 Mbps ATM, ISDN, voice, EIA/TIA and Token Ring Type 3 applications.

The N224-01K-BL meets most current industry standards, including IEEE 802.3ab, IEEE 802.5, ANSI/EIA/TIA 568, ISO/IEC 11801 and ETL (category 6, draft 11).

Features

Perfect Solution for High-Speed Cat6 Premise Applications in Air Ducts and Drop Ceilings

- Designed for distributing data, voice and digital video across Gigabit Ethernet networks
- Delivers speeds up to 550 MHz/1 Gbps
- Ideal for horizontal wiring applications, including 10/100/1000 Base-T Ethernet, 100 Mbps TPDDI, 155 Mbps ATM, ISDN, voice, EIA/TIA and Token Ring Type 3 applications

Premium Construction for Superior Performance

- Made from 23 AWG copper wire

Highlights

- Ideal for horizontal applications in air ducts and drop ceilings
- Rated for 550 MHz/1 Gbps communications
- High-quality 23 AWG 4-pair solid copper wire
- Plenum-rated CMP jacket
- Meets IEEE 802.3ab and ANSI/EIA/TIA 568 standards

Package Includes

- N224-01K-BL Cat6 Gigabit Bulk Solid-Core Plenum-Rated CMP Cable, Blue, 1000 ft.



Tripp Lite
1111 W. 35th Street
Chicago, IL 60609 USA
Telephone: 773.869.1234
www.tripplite.com

- 4-pair solid UTP
- Minimum near-end crosstalk
- Plenum-rated CMP jacket
- Meets most current industry standards, including IEEE 802.3ab, IEEE 802.5, ANSI/EIA/TIA 568, ISO/IEC 11801 and ETL (category 6, draft 11)

Specifications

OVERVIEW	
UPC Code	037332168009
INPUT	
Cable Length (ft.)	1000
Cable Length (m)	304.8
Cable Length (in.)	12000
Cable Length (cm)	30480
PHYSICAL	
Cable Jacket Rating	CMP
Cable Shielding	UTP
Color	Blue
Shipping Dimensions (hwd / cm)	35.00 x 35.99 x 35.00
Shipping Dimensions (hwd / in.)	13.78 x 14.17 x 13.78
Shipping Weight (kg)	14.06
Shipping Weight (lbs.)	31.00
Snagless Connector	No
Wire Gauge (AWG)	23
Wire Type	Solid
COMMUNICATIONS	
Network Speed	1Gbps
CONNECTIONS	
Side A - Connector 1	BARE WIRE
Side B - Connector 1	BARE WIRE
FEATURES & SPECIFICATIONS	



Tripp Lite
1111 W. 35th Street
Chicago, IL 60609 USA
Telephone: 773.869.1234
www.tripplite.com

Technology	Cat6
WARRANTY	
Product Warranty Period (Worldwide)	Lifetime limited warranty

© 2020 Tripp Lite. All rights reserved. All product and company names are trademarks or registered trademarks of their respective holders. Use of them does not imply any affiliation with or endorsement by them. Tripp Lite has a policy of continuous improvement. Specifications are subject to change without notice.

Tripp Lite uses primary and third-party agencies to test its products for compliance with standards. See a list of Tripp Lite's testing agencies:

<https://www.tripplite.com/products/product-certification-agencies>