

CCD VERTICAL DRIVER FOR DIGITAL CAMERAS

FEATURES

- **CCD Vertical Driver:**
 - Three Field CCD Support
 - Two Field CCD Support
- **Output Drivers:**
 - 3 Levels Driver (V-Transfer) x 5
 - 2 Levels Driver (V-Transfer) x 3
 - 2 Levels Driver (E-Shutter) x 1
- **Drive Capability:**
 - 450 pF to 1890 pF With 60 Ω to 240 Ω
- **Input Phase:**
 - 3 State (V-Transfer) x 5
 - 2 State (V-Transfer) x 3
 - 2 State (E-Shutter) x 1
- **Portable Operation:**
 - Input Interface: 2.7 V to 5.5 V

- **Power Supply:**

– VDD	2.7 V to 5.5 V
– VL	–5 V to –9 V
– VM	GND
– VH	11.5V to 15.5 V

APPLICATIONS

- Digital Camera
- Video Camera

DESCRIPTION

The VSP1900 is a CCD vertical clock driver with electric-shutter support. This device is composed of eight vertical transfer channels, which support both 3-field CCD and 2-field CCD operation. The VSP1900 contributes low power consumption and parts number reduction in the system.



Please be aware that an important notice concerning availability, standard warranty, and use in critical applications of Texas Instruments semiconductor products and disclaimers thereto appears at the end of this data sheet.



These devices have limited built-in ESD protection. The leads should be shorted together or the device placed in conductive foam during storage or handling to prevent electrostatic damage to the MOS gates.

ORDERING INFORMATION

PRODUCT	PACKAGE	PACKAGE DESIGNATOR	OPERATING TEMPERATURE RANGE	PACKAGE MARKING	ORDERING NUMBER	TRANSPORT MEDIA
VSP1900	TSSOP30	DBT	–25°C to 85°C	VSP1900	VSP1900	Tube (60 units/tube) Tape and reel

(1) For the most current specification and package information, refer to our web site at www.ti.com.

ABSOLUTE MAXIMUM RATINGS

over operating free-air temperature range unless otherwise noted⁽¹⁾

		UNITS
Supply voltage	VDD	GND –0.3 V to 7 V
	VL	GND to –10 V
	VH	VL + 26 V
Input voltage, V_{IN}		GND –0.3 V to (VDD + 0.3 V)
Ambient temperature under bias		–25°C to 85°C
Storage temperature, T_{stg}		–55°C to 150°C
Junction temperature		150°C
Package temperature (IR reflow, peak)		235°C

(1) Stresses beyond those listed under “absolute maximum ratings” may cause permanent damage to the device. These are stress ratings only, and functional operation of the device at these or any other conditions beyond those indicated under “recommended operating conditions” is not implied. Exposure to absolute-maximum-rated conditions for extended periods may affect device reliability.

RECOMMENDED OPERATING CONDITIONS

free-air temperature range unless otherwise noted

	MIN	NOM	MAX	UNIT
Supply voltage, VDD	2.7		5.5	V
Supply voltage, VL	–5		–9	V
Supply voltage, VH	11.5		15.5	V
Input voltage, V_{IN}	GND – 0.3 to (VDD + 0.3)			V

TRUTH TABLE

INPUT				OUTPUT		
V1N V3AN V3BN V5AN V5BN	CH1N CH2N CH3N CH4N CH5N	V2N V4N V6N	SUBN	V1 V3A V3B V5A V5B	V2 V4 V6	SUB
L	L	X	X	VH	X	X
L	H	X	X	VM	X	X
H	L	X	X	Z	X	X
H	H	X	X	VL	X	X
X	X	L	X	X	VM	X
X	X	H	X	X	VL	X
X	X	X	L	X	X	VH
X	X	X	H	X	X	VL

NOTE: Z = High impedance X = Don't care

ELECTRICAL CHARACTERISTICS

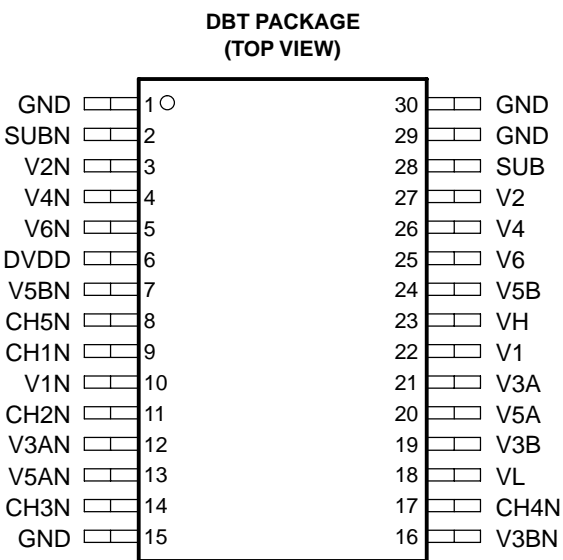
all specifications at $T_A = 25^\circ\text{C}$ (unless otherwise noted)

PARAMETER		TEST CONDITIONS	MIN	TYP	MAX	UNIT
DC power consumption				5.3		mW
Switching power consumption		VSP2267 (TG) with loading diagram		550		mW
DC CHARACTERISTICS						
V_{IH}	High-level input voltage		0.7VDD			V
V_{IL}	Low-level input voltage			0.2VDD		V
I_{IN}	Input current	$V_{IN} = \text{GND to } 5\text{ V (without pullup / pulldown resistor)}$	-10	0	10	μA
		$V_{IN} = \text{GND to } 5\text{ V (pullup / pulldown resistor)}$	-625	0	625	
I_H	Operating supply current			0.1	0.2	mA
I_{DD}				1		
I_L				0.125		
I_{OL}	Output current	$V_1, V_2, V_3A, V_3B, V_4, V_5A, V_5B, V_6 = -8.1\text{ V}$	10			mA
I_{OM1}		$V_1, V_2, V_3A, V_3B, V_4, V_5A, V_5B, V_6 = -0.2\text{ V}$			-5	
I_{OM2}		$V_1, V_3A, V_3B, V_5A, V_5B = 0.2\text{ V}$	5			
I_{OH}		$V_1, V_3A, V_3B, V_5A, V_5B = 14.55\text{ V}$			-7.2	
I_{OSL}		$\text{SUB} = -8.1\text{ V}$	5.4			
I_{OSH}		$\text{SUB} = 14.55\text{ V}$			-4	

SWITCHING CHARACTERISTICS

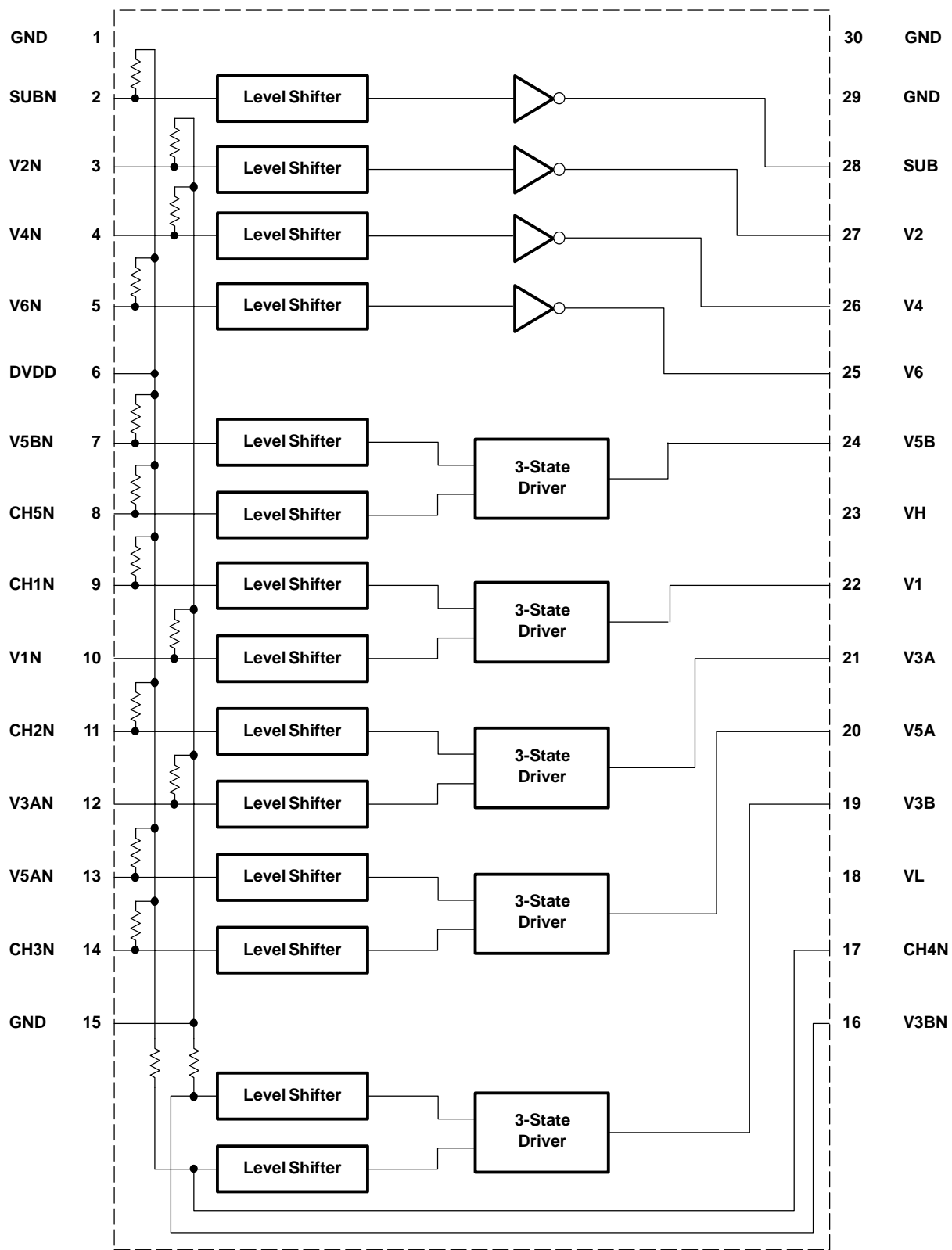
all specifications at $T_A = 25^\circ\text{C}$ (unless otherwise noted)

PARAMETER		TEST CONDITIONS	MIN	TYP	MAX	UNIT
$t_d(\text{PLM})$	Propagation delay time			15	100	ns
$t_d(\text{PMH})$				20	100	
$t_d(\text{PLH})$				20	100	
$t_d(\text{PML})$				15	50	
$t_d(\text{PHM})$				30	50	
$t_d(\text{PHL})$				30	50	
$t_r(\text{TLM})$	Rise time	$V_L \rightarrow V_M$			300	ns
$t_r(\text{TMH})$		$V_M \rightarrow V_H$			300	
$t_r(\text{TLH})$		$V_L \rightarrow V_H$			300	
$t_f(\text{TML})$	Fall time	$V_M \rightarrow V_L$			300	ns
$t_f(\text{THM})$		$V_H \rightarrow V_M$			300	
$t_f(\text{THL})$		$V_H \rightarrow V_L$			300	
$V_n(\text{CLH})$	Output noise voltage				2	V
$V_n(\text{CLL})$						
$V_n(\text{CMH})$						
$V_n(\text{CML})$						
$V_n(\text{CHL})$						

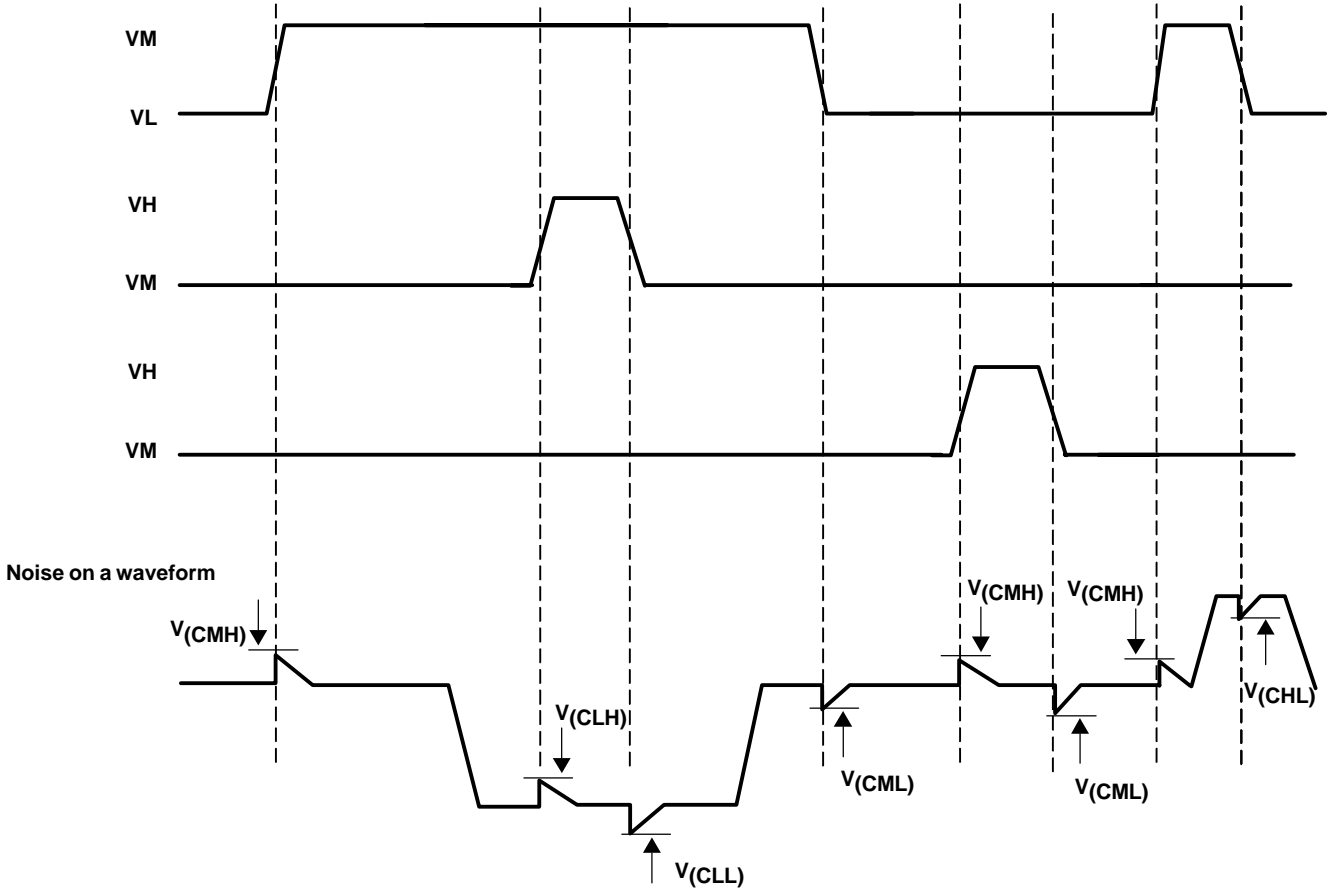
PIN ASSIGNMENTS**Terminal Functions**

TERMINAL NAME	NO.	TYPE	DESCRIPTIONS
GND	1	P	Ground
SUBN	2	DI	CCD substrate clock SUB input
V2N	3	DI	Vertical transfer clock 2 input
V4N	4	DI	Vertical transfer clock 4 input
V6N	5	DI	Vertical transfer clock 6 input
DVDD	6	P	Digital power supply
V5BN	7	DI	Vertical transfer clock 5B input
CH5N	8	DI	Read out clock 5 input
CH1N	9	DI	Read out clock 1 input
V1N	10	DI	Vertical transfer clock 1 input
CH2N	11	DI	Read out clock 2 input
V3AN	12	DI	Vertical transfer clock 3A input
V5AN	13	DI	Vertical transfer clock 5A input
CH3N	14	DI	Read out clock 3 input
GND	15	P	Ground
V3BN	16	DI	Vertical transfer clock 3B input
CH4N	17	DI	Read out clock 4 input
VL	18	P	Digital power supply
V3B	19	DO	Vertical transfer clock 3B output
V5A	20	DO	Vertical transfer clock 5A output
V3A	21	DO	Vertical transfer clock 3A output
V1	22	DO	Vertical transfer clock 1 output
VH	23	P	Digital power supply
V5B	24	DO	Vertical transfer clock 5B output
V6	25	DO	Vertical transfer clock 6 output
V4	26	DO	Vertical transfer clock 4 output
V2	27	DO	Vertical transfer clock 2 output
SUB	28	DO	CCD substrate clock SUB output
GND	29	P	Ground
GND	30	P	Ground

FUNCTIONAL BLOCK DIAGRAM



SWITCHING WAVEFORM



LOADING DIAGRAM

Vertical clock series resistor	R1, R2, R4, R6	60 Ω
	R3A, R5A	240 Ω
	R3B, R5B	80 Ω
Vertical clock to GND	C Φ V1	1280 pF
	C Φ V3A, C Φ V3B	640 pF
	C Φ V5A, C Φ V5B	640 pF
	C Φ V2, C Φ V4, C Φ V6	400 pF
Between vertical clock	C Φ V12	510 pF
	C Φ V23A, C Φ V23B	50 pF
	C Φ V45A, C Φ V45B	50 pF
	C Φ V3A4, C Φ V3B4	260 pF
	C Φ V5A6, C Φ V5B6	260 pF
	C Φ V61	100 pF
Substrate clock to GND	C Φ VSUB	1000 pF
Vertical clock GND resistor	R GND	18 Ω

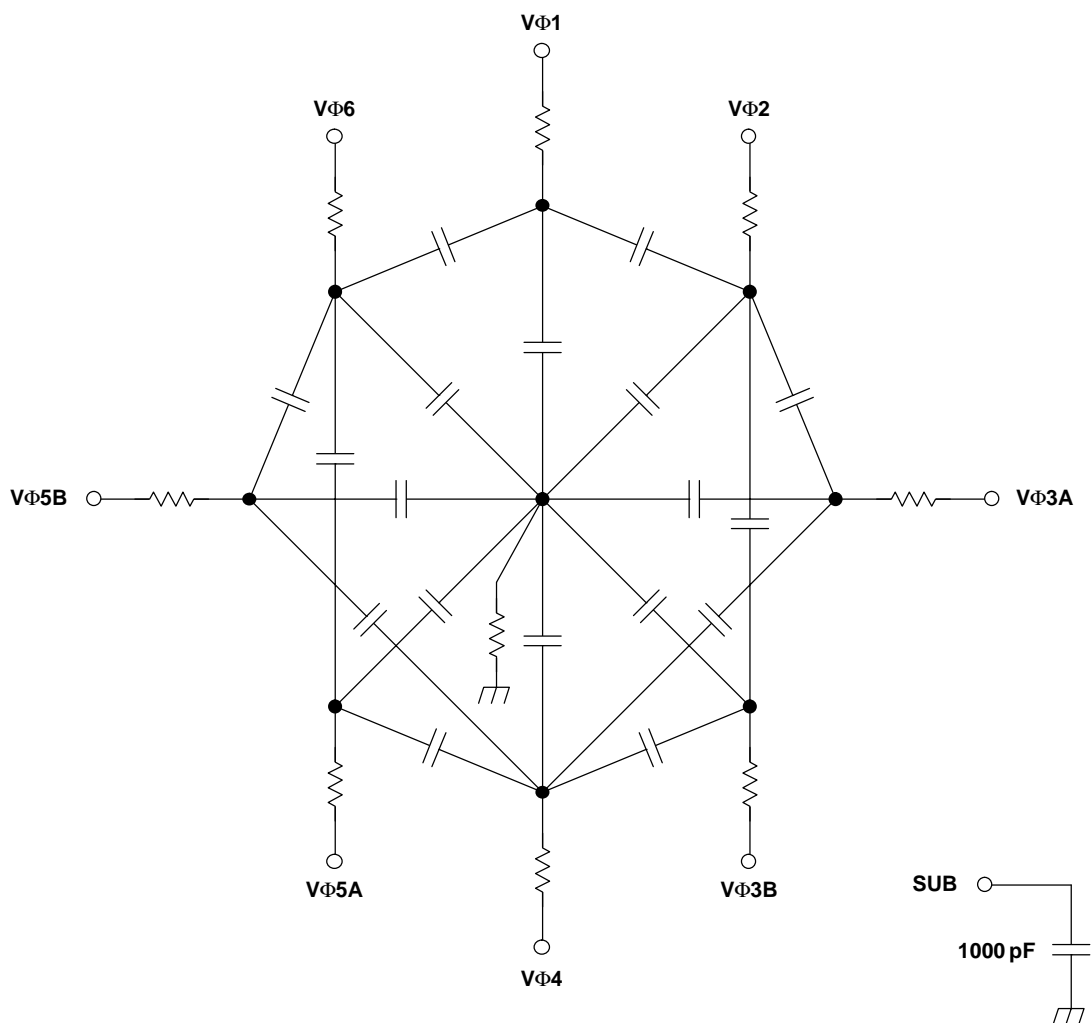


Figure 1. VSP1900 Loading Diagram

DESCRIPTION

The VSP1900 is a CCD vertical clock driver with electric shutter. The VSP1900 is composed of five 3-state and three 2-state vertical transfer channels, which support both 3 field and 2 field CCD operation. The VSP1900 contributes low power consumption and parts number reduction in the system.

OPERATION

Power On/Off Sequence

This is the same as the CCD power up sequence, when power on, VDD powers on first, VH, VM power on second, and VL powers on later. When powering off, VL powers off first, VH, VM power of second, and VDD powers off later.

Vertical Transfer Signal

The VSP1900 receives signals from TG (CCD timing generator). The input signal is converted into CCD operation voltage level by the level shifter. The level shifter circuits connect to a 2-state or 3-state driver, which is connected to the CCD input pin. While using a 2-field CCD, one of the 3-state drivers is used as a 2-state driver. The CH#N pin is pulled up internally, so that the VH level does not appear on the output pin.

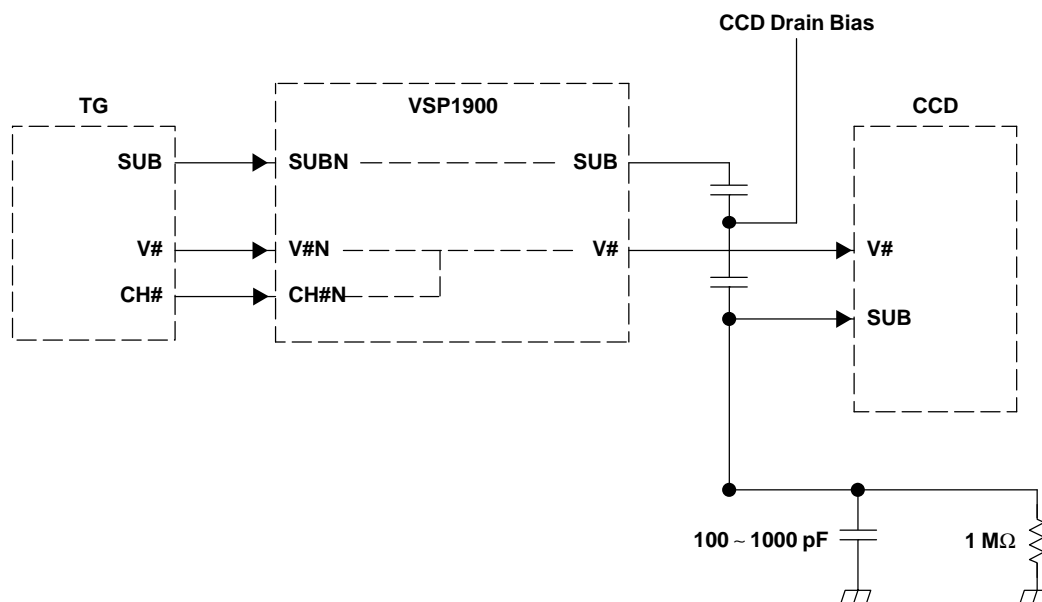


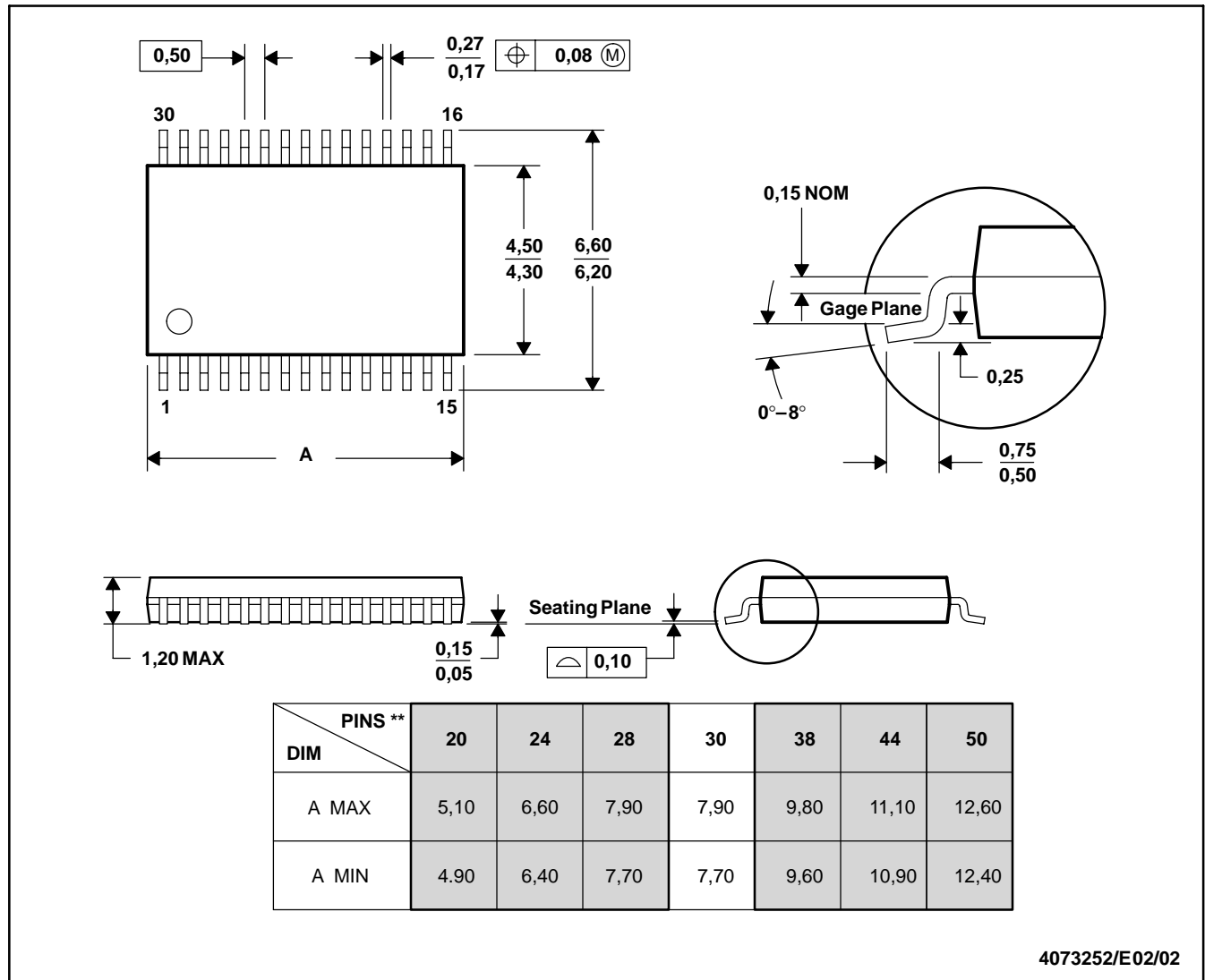
Figure 2. FVSP1900 Circuit Application

MECHANICAL DATA

DBT (R-PDSO-G**)

PLASTIC SMALL-OUTLINE PACKAGE

30 PINS SHOWN



- NOTES: A. All linear dimensions are in millimeters.
 B. This drawing is subject to change without notice.
 C. Body dimensions do not include mold flash or protrusion.
 D. Falls within JEDEC MO-153

PACKAGING INFORMATION

Orderable Device	Status ⁽¹⁾	Package Type	Package Drawing	Pins	Package Qty	Eco Plan ⁽²⁾	Lead/Ball Finish	MSL Peak Temp ⁽³⁾
VSP1900DBT	ACTIVE	TSSOP	DBT	30	60	Green (RoHS & no Sb/Br)	CU NIPDAU	Level-2-260C-1 YEAR
VSP1900DBTG4	ACTIVE	TSSOP	DBT	30	60	Green (RoHS & no Sb/Br)	CU NIPDAU	Level-2-260C-1 YEAR
VSP1900DBTR	ACTIVE	TSSOP	DBT	30	2000	Green (RoHS & no Sb/Br)	CU NIPDAU	Level-2-260C-1 YEAR
VSP1900DBTRG4	ACTIVE	TSSOP	DBT	30	2000	Green (RoHS & no Sb/Br)	CU NIPDAU	Level-2-260C-1 YEAR

⁽¹⁾ The marketing status values are defined as follows:

ACTIVE: Product device recommended for new designs.

LIFEBUY: TI has announced that the device will be discontinued, and a lifetime-buy period is in effect.

NRND: Not recommended for new designs. Device is in production to support existing customers, but TI does not recommend using this part in a new design.

PREVIEW: Device has been announced but is not in production. Samples may or may not be available.

OBSOLETE: TI has discontinued the production of the device.

⁽²⁾ Eco Plan - The planned eco-friendly classification: Pb-Free (RoHS), Pb-Free (RoHS Exempt), or Green (RoHS & no Sb/Br) - please check <http://www.ti.com/productcontent> for the latest availability information and additional product content details.

TBD: The Pb-Free/Green conversion plan has not been defined.

Pb-Free (RoHS): TI's terms "Lead-Free" or "Pb-Free" mean semiconductor products that are compatible with the current RoHS requirements for all 6 substances, including the requirement that lead not exceed 0.1% by weight in homogeneous materials. Where designed to be soldered at high temperatures, TI Pb-Free products are suitable for use in specified lead-free processes.

Pb-Free (RoHS Exempt): This component has a RoHS exemption for either 1) lead-based flip-chip solder bumps used between the die and package, or 2) lead-based die adhesive used between the die and leadframe. The component is otherwise considered Pb-Free (RoHS compatible) as defined above.

Green (RoHS & no Sb/Br): TI defines "Green" to mean Pb-Free (RoHS compatible), and free of Bromine (Br) and Antimony (Sb) based flame retardants (Br or Sb do not exceed 0.1% by weight in homogeneous material)

⁽³⁾ MSL, Peak Temp. -- The Moisture Sensitivity Level rating according to the JEDEC industry standard classifications, and peak solder temperature.

Important Information and Disclaimer: The information provided on this page represents TI's knowledge and belief as of the date that it is provided. TI bases its knowledge and belief on information provided by third parties, and makes no representation or warranty as to the accuracy of such information. Efforts are underway to better integrate information from third parties. TI has taken and continues to take reasonable steps to provide representative and accurate information but may not have conducted destructive testing or chemical analysis on incoming materials and chemicals. TI and TI suppliers consider certain information to be proprietary, and thus CAS numbers and other limited information may not be available for release.

In no event shall TI's liability arising out of such information exceed the total purchase price of the TI part(s) at issue in this document sold by TI to Customer on an annual basis.

TAPE AND REEL INFORMATION



*All dimensions are nominal

Device	Package Type	Package Drawing	Pins	SPQ	Reel Diameter (mm)	Reel Width W1 (mm)	A0 (mm)	B0 (mm)	K0 (mm)	P1 (mm)	W (mm)	Pin1 Quadrant
VSP1900DBTR	TSSOP	DBT	30	2000	330.0	16.4	6.95	8.3	1.6	8.0	16.0	Q1

TAPE AND REEL BOX DIMENSIONS



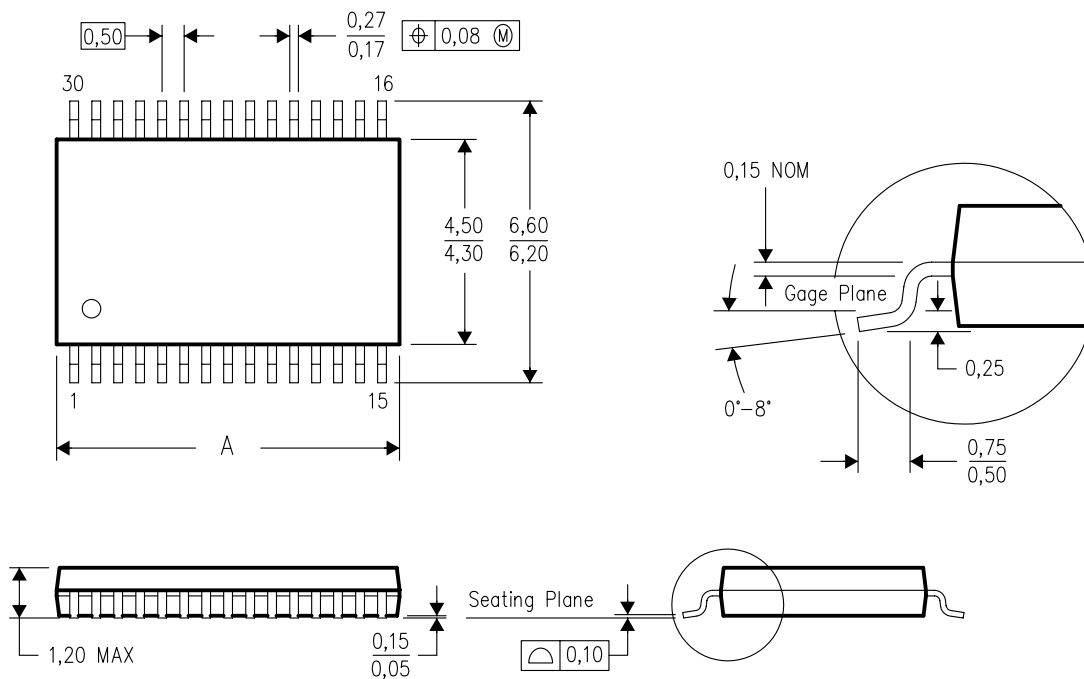
*All dimensions are nominal

Device	Package Type	Package Drawing	Pins	SPQ	Length (mm)	Width (mm)	Height (mm)
VSP1900DBTR	TSSOP	DBT	30	2000	346.0	346.0	33.0

DBT (R-PDSO-G**)

30 PINS SHOWN

PLASTIC SMALL-OUTLINE PACKAGE



PINS **	20	24	28	30	38	44	50
DIM							
A MAX	5,10	6,60	7,90	7,90	9,80	11,40	12,60
A MIN	4,90	6,40	7,70	7,70	9,60	11,20	12,40

4073252/F 09/05

- NOTES:
- All linear dimensions are in millimeters.
 - This drawing is subject to change without notice.
 - Body dimensions do not include mold flash or protrusion.
 - Falls within JEDEC MO-153 except 44 pin package length.

IMPORTANT NOTICE

Texas Instruments Incorporated and its subsidiaries (TI) reserve the right to make corrections, modifications, enhancements, improvements, and other changes to its products and services at any time and to discontinue any product or service without notice. Customers should obtain the latest relevant information before placing orders and should verify that such information is current and complete. All products are sold subject to TI's terms and conditions of sale supplied at the time of order acknowledgment.

TI warrants performance of its hardware products to the specifications applicable at the time of sale in accordance with TI's standard warranty. Testing and other quality control techniques are used to the extent TI deems necessary to support this warranty. Except where mandated by government requirements, testing of all parameters of each product is not necessarily performed.

TI assumes no liability for applications assistance or customer product design. Customers are responsible for their products and applications using TI components. To minimize the risks associated with customer products and applications, customers should provide adequate design and operating safeguards.

TI does not warrant or represent that any license, either express or implied, is granted under any TI patent right, copyright, mask work right, or other TI intellectual property right relating to any combination, machine, or process in which TI products or services are used. Information published by TI regarding third-party products or services does not constitute a license from TI to use such products or services or a warranty or endorsement thereof. Use of such information may require a license from a third party under the patents or other intellectual property of the third party, or a license from TI under the patents or other intellectual property of TI.

Reproduction of TI information in TI data books or data sheets is permissible only if reproduction is without alteration and is accompanied by all associated warranties, conditions, limitations, and notices. Reproduction of this information with alteration is an unfair and deceptive business practice. TI is not responsible or liable for such altered documentation. Information of third parties may be subject to additional restrictions.

Resale of TI products or services with statements different from or beyond the parameters stated by TI for that product or service voids all express and any implied warranties for the associated TI product or service and is an unfair and deceptive business practice. TI is not responsible or liable for any such statements.

TI products are not authorized for use in safety-critical applications (such as life support) where a failure of the TI product would reasonably be expected to cause severe personal injury or death, unless officers of the parties have executed an agreement specifically governing such use. Buyers represent that they have all necessary expertise in the safety and regulatory ramifications of their applications, and acknowledge and agree that they are solely responsible for all legal, regulatory and safety-related requirements concerning their products and any use of TI products in such safety-critical applications, notwithstanding any applications-related information or support that may be provided by TI. Further, Buyers must fully indemnify TI and its representatives against any damages arising out of the use of TI products in such safety-critical applications.

TI products are neither designed nor intended for use in military/aerospace applications or environments unless the TI products are specifically designated by TI as military-grade or "enhanced plastic." Only products designated by TI as military-grade meet military specifications. Buyers acknowledge and agree that any such use of TI products which TI has not designated as military-grade is solely at the Buyer's risk, and that they are solely responsible for compliance with all legal and regulatory requirements in connection with such use.

TI products are neither designed nor intended for use in automotive applications or environments unless the specific TI products are designated by TI as compliant with ISO/TS 16949 requirements. Buyers acknowledge and agree that, if they use any non-designated products in automotive applications, TI will not be responsible for any failure to meet such requirements.

Following are URLs where you can obtain information on other Texas Instruments products and application solutions:

Products

Amplifiers	amplifier.ti.com
Data Converters	dataconverter.ti.com
DSP	dsp.ti.com
Clocks and Timers	www.ti.com/clocks
Interface	interface.ti.com
Logic	logic.ti.com
Power Mgmt	power.ti.com
Microcontrollers	microcontroller.ti.com
RFID	www.ti-rfid.com
RF/IF and ZigBee® Solutions	www.ti.com/lprf

Applications

Audio	www.ti.com/audio
Automotive	www.ti.com/automotive
Broadband	www.ti.com/broadband
Digital Control	www.ti.com/digitalcontrol
Medical	www.ti.com/medical
Military	www.ti.com/military
Optical Networking	www.ti.com/opticalnetwork
Security	www.ti.com/security
Telephony	www.ti.com/telephony
Video & Imaging	www.ti.com/video
Wireless	www.ti.com/wireless

Mailing Address: Texas Instruments, Post Office Box 655303, Dallas, Texas 75265
Copyright © 2008, Texas Instruments Incorporated