



# GS1011M and GS1500M Single-Site Programmiers

## PRODUCT OVERVIEW

The GainSpan GS1011M and GS1500M single-site flash programmers allow users to program GainSpan Wi-Fi modules, one at a time. Users can select and load either the WLAN or APP firmware depending on their requirements. The single-site programmer kit includes programmer hardware and software application/GUI to select and load firmware binaries into the module.

The programmer hardware includes a single site flash programming board with a Wi-Fi module socket and a USB/DB9 connector through which the programming software can access the module and program it.

The programmer kit includes simple GUI application software for ease of use in a production environment. The GUI allows selection of firmware binaries and displays module MAC address, programming success/failure and operation progress and status.

The programmer kit also includes a Quick Start Guide and a detailed User Guide that provides a description of the tool and the procedures for programming modules.

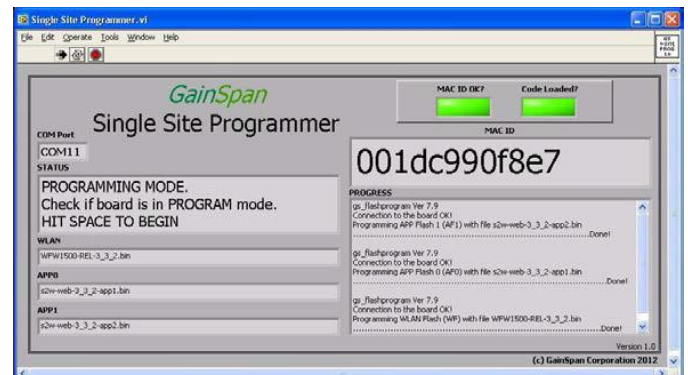


## BENEFITS:

- **GainSpan single-site programmer for fast programming of Wi-Fi modules**
- **Simple, socketed hardware, designed for quick and easy loading of Wi-Fi modules**
- **Simple GUI for ease of programming in production environment**
- **Complete documentation package**

## FEATURES:

- **Single-site programmers for GainSpan GS1011 SoC based Wi-Fi modules**
  - GS1011Mx
  - GS1011MEx/GS1500M
  - GS1011MxxS
- **Programming over UART serial interface**
  - UART speed up to 115 Kbps
- **Programmer kit includes**
  - Single-site programmer board
  - Programming Software and GUI
  - Cables
- **Software Features**
  - Programmer application and GUI
  - Allows selection of WLAN or APP firmware binaries via GUI or using a configuration file in production environment
  - GUI displays MAC ID, COM port selection, programming status and programming success/failure



**SINGLE-SITE PROGRAMMER HARDWARE SPECIFICATION**

Feature	Description
Socket for RF Module	Sockets for GS1011Mlx, GS1011MEx, GS1011MxxS or GS1500M Wi-Fi Modules
Power Source	3.3V DC power jack
Power on/off switch	Turn power on/off
Run/Program switch	Turned to "Program" for programming module
Connection to PC/Laptop	DB9 null modem or USB cable

**SINGLE-SITE PROGRAMMER ORDERING INFORMATION**

ITEM	PART NUMBER	Description
GS1011Mlx Single Site Programmer	GS1011MI-PGM1	Used for programming the GS1011Mlx Wi-Fi modules
GS1011MEx Single Site Programmer	GS1011ME-PGM1	Used for programming the GS1011MEx Wi-Fi modules
GS1011MxxS Single Site Programmer	GS1011MS-PGM1	Used for programming the GS1011MxxS Wi-Fi modules
GS1500M Single Site Programmer	GS1500M-PGM1	Used for programming the GS1500M Wi-Fi modules