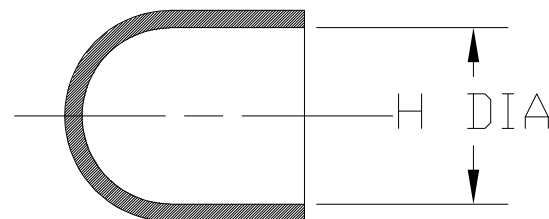


NOTES

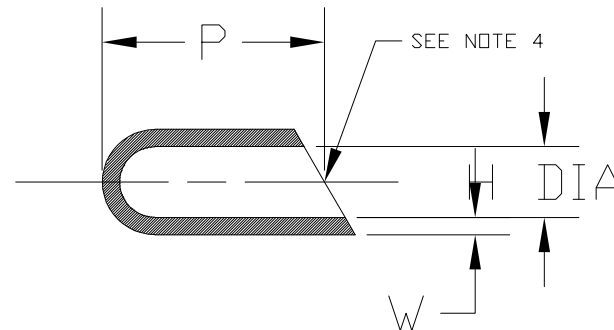
1. All dimensions are in $\frac{\text{inches}}{[\text{millimeters}]}$
2. Dimensions appearing in table are as follows:
 - a - As Supplied
 - b - After Unrestricted Recovery
3. Coating is optional. As supplied dimensions appearing in table are for uncoated parts. When coating is added, entry diameters will be reduced by .06 max.
4. Recovered parts may have angularity of $30^\circ - 45^\circ$.

REVISIONS

LTR	DESCRIPTION	DATE
V	RELEASE PER ECO-16-009060	05/14/2016



AS SUPPLIED



AFTER UNRESTRICTED RECOVERY

ORDERING INFORMATION

The diagram illustrates the structure of a part number. The part number is shown as 101A021-X-XX/XXX-X. Below it, lines connect the components to their descriptions:

- Base part number**: 101A021
- Material dash number (See Compatibility Chart)**: -X
- Modification number**: -XX
- Adhesive slash number (If necessary, see Compatibility Chart)**: /XXX
- Color designator**: -X

* Color code based on SAE-AMS-DTL-23053
* not all colors available for this molded part.

TABLE OF DIMENSIONS	
1	2
3	4
5	6
7	8
9	10
11	12
13	14
15	16
17	18
19	20
21	22
23	24
25	26
27	28
29	30
31	32
33	34
35	36
37	38
39	40
41	42
43	44
45	46
47	48
49	50
51	52
53	54
55	56
57	58
59	60
61	62
63	64
65	66
67	68
69	70
71	72
73	74
75	76
77	78
79	80
81	82
83	84
85	86
87	88
89	90
91	92
93	94
95	96
97	98
99	100

PART NUMBER	H		P	W
	Min a	Max b	Min b	±20% b
101A011	$\frac{.20}{[5,1]}$	$\frac{.08}{[2,0]}$	$\frac{.90}{[22,9]}$	$\frac{.04}{[1,02]}$
101A021	$\frac{.29}{[7,4]}$	$\frac{.13}{[3,3]}$	$\frac{1.00}{[25,4]}$	$\frac{.05}{[1,27]}$
101A031	$\frac{.40}{[10,2]}$	$\frac{.18}{[4,6]}$	$\frac{1.20}{[30,5]}$	$\frac{.06}{[1,52]}$
101A041	$\frac{.60}{[15,2]}$	$\frac{.25}{[6,4]}$	$\frac{1.60}{[40,6]}$	$\frac{.07}{[1,78]}$
101A052	$\frac{.81}{[20,6]}$	$\frac{.37}{[9,4]}$	$\frac{2.40}{[61,0]}$	$\frac{.08}{[2,03]}$
101A062	$\frac{1.00}{[25,4]}$	$\frac{.45}{[11,4]}$	$\frac{2.70}{[68,6]}$	$\frac{.09}{[2,29]}$
101A073	$\frac{1.55}{[39,4]}$	$\frac{.71}{[18,0]}$	$\frac{3.60}{[91,4]}$	$\frac{.10}{[2,54]}$
101A083	$\frac{2.00}{[50,8]}$	$\frac{.90}{[22,9]}$	$\frac{4.00}{[101,6]}$	$\frac{.11}{[2,79]}$
101A094	$\frac{3.30}{[83,8]}$	$\frac{1.50}{[38,1]}$	$\frac{4.50}{[114,3]}$	$\frac{.12}{[3,05]}$

Raychem Molded Parts
CUSTOMER DRAWING

COMPATIBILITY CHART

MATERIAL DASH NO.	MATERIAL DESCRIPTION	RT SPEC	ADHESIVE SLASH NO.	ADHESIVE S NUMBER
-3	Polyolefin, Semi-rigid	RT-301	/42; /86	S-1017; S-1048
-4	Polyolefin, Flexible	RT-1304	/42; /86	S-1017; S-1048
-12	*VITON, Flexible	RT-1312	N/A	N/A
-25	Elastomer, Fluid Resistant	RT-1325	/86; /225	S-1048; S-1206
-100	Polyolefin, Semi-flexible	RT-1323	/180	S-1030

THIS DRAWING AND THE INFORMATION SET FORTH HEREON ARE THE PROPERTY OF TYCO ELECTRONICS CORPORATION, AND ARE TO BE HELD IN TRUST AND CONFIDENCE. PUBLICATION, DUPLICATION, DISCLOSURE OR USE FOR ANY PURPOSE NOT EXPRESSLY AUTHORIZED IN WRITING BY TYCO ELECTRONICS CORPORATION IS PROHIBITED.

UNLESS OTHERWISE SPECIFIED
DIMENSIONS ARE METRIC AND
INCHES ARE IN BRACKETS.

DRAWN
M Mazariegos
05/14/16

APPROVED
W. KERNS
05/14/16

ESTE

TE Connectivity

RPN

	TITLE
--	-------

CAD FILE:

101A011thru094_CD

	TITLE
--	-------

Cap, Round End

SIZE	CODE IDENT. NO.	DWG. NO.
------	-----------------	----------

06090	06090
-------	-------

101A011thru094

TYCO ELECTRONICS RESERVES THE RIGHT TO AMEND THIS DRAWING AT ANY TIME. USERS SHOULD EVALUATE THE SUITABILITY OF THE PRODUCT FOR THEIR APPLICATION.

© 2012 Tyco Electronics Corporation. All rights reserved.

DO NOT SCALE THIS DRAWING

SHEET 1 OF 1