

Fig. 1

1. INTRODUCTION

AMP Extraction Tool 457241-1 is designed for removing contacts from AMP Bifurcated Leaf connectors. Read this material thoroughly before extracting any contacts.

NOTE

All dimensions presented on this instruction sheet are in inches, unless otherwise stated.

2. DESCRIPTION

This tool consists of a lance release tip for depressing the contact locking lance, and an extraction tip for pushing the contact from the connector.

3. CONTACT EXTRACTION

Refer to Figure 1 and proceed as follows:

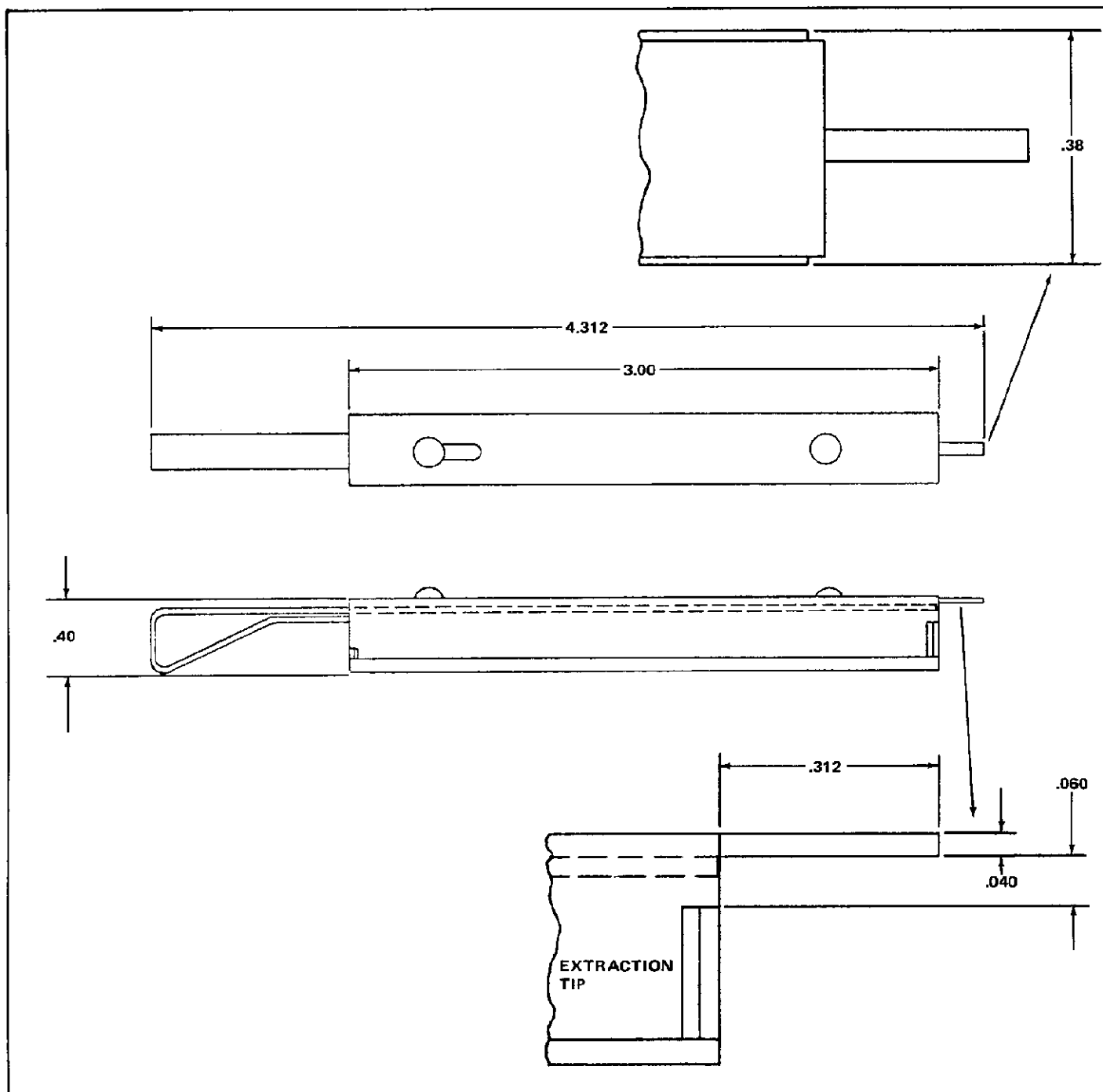
1. Determine which contact is to be removed. Look straight into FRONT (Mating Face) of housing and notice lance release slot, located between contact and outer edge of housing.

2. Grasp wire of contact to be removed, and push contact forward slightly. This will move contact locking lance away from housing material and allow contact to be removed more easily, without possible damage to locking lance.
3. While pushing forward on wire, insert tool lance release tip straight into lance release slot until tip bottoms. The contact locking lance is now depressed and the wire may be released.

CAUTION

Do NOT pry or twist tool when inserted in housing, otherwise, damage to the tool and/or housing may result.

4. Maintaining inward pressure on release tip, push handle of extraction tip forward. The contact will partially back out of housing.
5. Remove tool and pull contact out BACK of housing.



EXTRACTION TOOL	PRODUCT DESIGNED FOR	ENGINEERING APPROVAL	DATE
457241-1	AMP Bifurcated Leaf Contacts	W ^m MacKisinger, Jr.	4-19-77

Fig. 2

4. TOOL CERTIFICATION

AMP Extraction Tool 457241-1 should be certified with the information provided in Figure 2. The tool should be inspected immediately upon arrival at your facility to be sure it has not been damaged in transit, and at regularly scheduled intervals to be sure it remains functional.

Additional tools can be purchased from:

AMP Incorporated
 Eisenhower Boulevard
 Harrisburg, Pennsylvania 17105