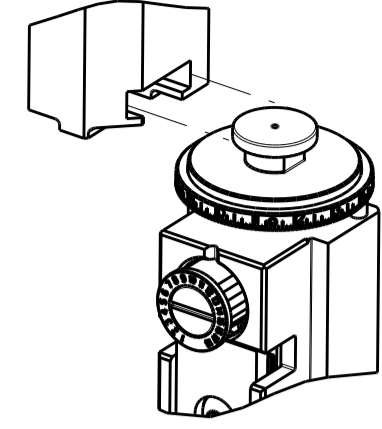


PART NUMBER	REVISION	DESCRIPTION	FEED TYPE
2150379-1	B	FINE CRIMP HEIGHT ADJUST	MECHANICAL
2150379-2	B	FINE CRIMP HEIGHT ADJUST	PNEUMATIC
7-2150379-1	B	MECHANICAL AND CRIMP TOOLING KIT	MECHANICAL
7-2150379-2	B	PNEUMATIC AND CRIMP TOOLING KIT	PNEUMATIC
7-2150379-7	A	CRIMP TOOLING KIT	-

ATLANTIC VERSION TERMINATOR INTERFACE ADAPTER



APPLICATOR DATA		
CRIMP	SIZE	TYPE
WIRE	2.54 mm [.100]	F
INSUL	-	-

APPLICATOR INSTRUCTIONS 408-35043

TERMINAL DATA: TE TERMINAL TE CRIMP SPECIFICATION			
TERMINAL NAME: RING			
WIRE STRIP LENGTH		INSULATION DIAMETER RANGE	
3.58-4.34 mm [.141-.171 IN]		Ø -	
TERMINAL APPLICATION SPECIFICATION	114-2084	-	-
TERMINALS APPLIED ⁴			
TE TERMINAL	TE TERMINAL	TE TERMINAL	TE TERMINAL
40668	40777	40816	

WIRE SIZE	CRIMP HEIGHT mm [INCH]	CRIMP HEIGHT REFERENCE SETTING ³
16 AWG	1.70 +/- 0.050 [.067 +/- .002]	4.6
18 AWG	1.52 +/- 0.050 [.060 +/- .002]	6.6
20 AWG	1.42 +/- 0.050 [.056 +/- .002]	7.6

- ¹ RECOMMENDED SPARE PARTS
 - ² REFER TO SUPPLIED INSTRUCTION SHEET FOR CLEANING, LUBRICATION AND STORAGE OF APPLICATOR.
 - ³ CRIMP HEIGHT REFERENCE SETTING WAS THE SETTING USED WHEN THE APPLICATOR WAS QUALIFIED AT THE FACTORY. ADJUSTMENT MAY BE NECESSARY WHEN RUNNING APPLICATOR IN THE FIELD.
 - ⁴ TERMINAL LUBRICANT IS RECOMMENDED.
5. UNLESS SPECIFIED OTHERWISE TORQUE VALUES SHALL BE USED PER DOCUMENT, 101-35000.

***WARNING**
 ON INSTALLATION, SET WIRE DISC TO CRIMP HEIGHT REFERENCE SETTING FOR LARGEST WIRE SIZE. CRIMP HEIGHT REFERENCE SETTINGS GREATER THAN THE VALUE SHOWN MAY CAUSE DAMAGE TO THE CRIMP TOOLING, REFER TO THE INSTRUCTION SHEET FOR PROPER SETUP AND ADJUSTMENTS.

ATLANTIC VERSION
 Shown on sheets 1 of 4 & 2 of 4
 (Pacific version shown on sheets 3 of 4 & 4 of 4)

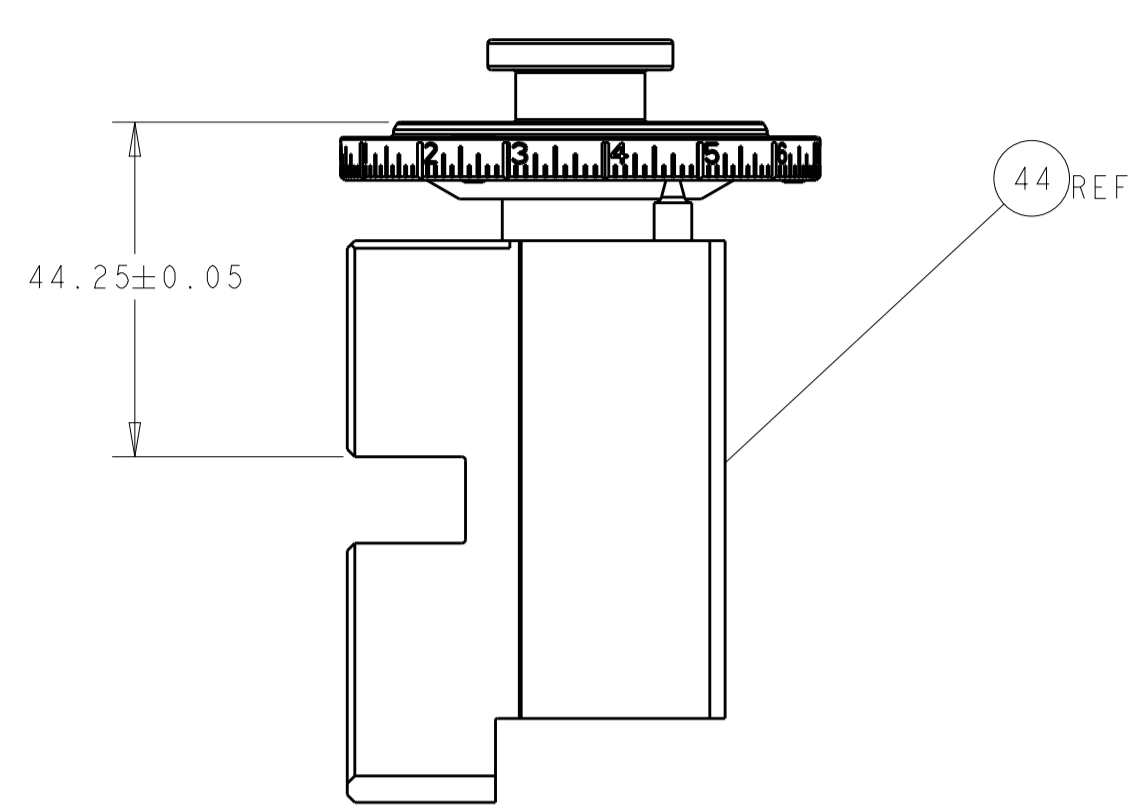
LOC	DIST	REVISIONS					
A	66	P	LTN	DESCRIPTION	DATE	OWN	APVD
		1		ORIGINAL	09OCT2013	GH	TE
		A		RELEASED	18NOV2013	GH	TE
		B		ECR-20-005341	13APR2020	FZ	TE

-	1	-	1	-	2119641-1	FEED CAM, AIR FEED	248
-	-	1	-	1	2119580-1	MECHANICAL FEED ASSEMBLY	239
-	1	-	1	-	2844940-3	AIR FEED MODULE	238
-	REF	REF	REF	REF	994970-2	COUNTER, MAGNETIC	164
⁴	-	1	1	1	2119955-2	ASSY, LUBRICATOR, END FEED	84
	-	1	1	1	455888-3	SPACER, CRIMPER	82
	-	1	1	1	1803607-4	DOCUMENTATION PACKAGE	71
	-	2	2	2	2-18032-2	SCR, SET, FLT PNT, M3 X 10.0	70
	-	1	1	1	2119740-1	TAG, IDENTIFICATION	67
	-	2	2	2	2168078-1	SCREW, DRIVE, RH, RoHS, 2 x .188	66
	-	1	1	1	2168083-2	SCR, SKT HD CAP, RoHS, M4 X 8.0	60
	-	1	1	1	5-18022-5	SCR, HEX HD CAP, M4 X 6.0	59
	-	1	-	1	2063961-1	FEED FINGER	58
	-	4	4	4	2168400-4	SHCS, LOW HEAD, RoHS, M4 X 8	57
	-	2	2	2	1-2168083-4	SCR, SKT HD CAP, RoHS, M4 X 5	56
	-	2	2	2	5018030-1	NUT, HEX, REG, RoHS, M3	54
	-	2	2	2	986965-8	NUT, LOCK, HEX, TORQUE (M4)	53
	-	1	-	1	2063961-9	FEED FINGER	51
	-	1	2	1	18023-9	SCR, SKT HD CAP M4 X 6.0	49
	-	1	-	1	2119652-1	FEED CAM, PRE FEED	48
	-	1	-	1	2119653-1	FEED CAM, POST FEED	47
	-	1	1	1	2119655-5	APPLICATOR BASIC ASSEMBLY, EF	46
	-	1	1	1	1803517-1	RAM ASSEMBLY, EF ATLANTIC	44
	-	1	1	1	1803602-3	SCR, BHSC, RoHS (M8 X 12)	41
	-	8	8	8	1-18028-2	WASHER, FLAT, REG M4	33
	-	2	2	2	2168083-8	SCR, SKT HD CAP, RoHS, M4 X 16	31
	-	2	2	2	2168083-2	SCR, SKT HD CAP, RoHS, M4 X 8.0	29
	-	1	1	1	240639-1	STRIPPER (MACHINING)	27
	-	2	2	2	1-2168083-5	SCR, SKT HD CAP, RoHS, M4 X 30	25
	-	1	1	1	1752371-2	PLATE, STRIP GUIDE	24
	-	2	2	2	2-22281-3	SPRING, COMPRESSION	22
	-	1	1	1	1803292-4	DRAG	20
	-	1	1	1	1901696-1	STRIP GUIDE, REAR	19
	-	1	1	1	1901695-1	STRIP GUIDE, FRONT	18
	-	4	4	4	1-2079383-1	SCR, BHSC, RoHS (M6 X 12)	17
¹	-	1	1	1	691901-2	REAR SHEAR PLATE, REVERSIBLE	11
¹	-	2	2	2	240645-2	SPACER, SHEAR PLATE	10
¹	-	1	1	1	690783-2	PLATE, SPACER	9
¹	1	2	2	1	1803002-4	ANVIL, COMBINATION, END FEED	8
¹	-	1	1	1	2-691157-7	BLADE, SHEAR -	7
	-	-	-	-	-	-	6
	-	-	-	-	-	-	4
	-	-	-	-	-	-	3
	-	-	-	-	-	-	2
¹	1	2	2	1	456407-8	CRIMPER, WIRE PREMIUM	1
	-77-72-71-2	-1			PART NO	DESCRIPTION	ITEM NO

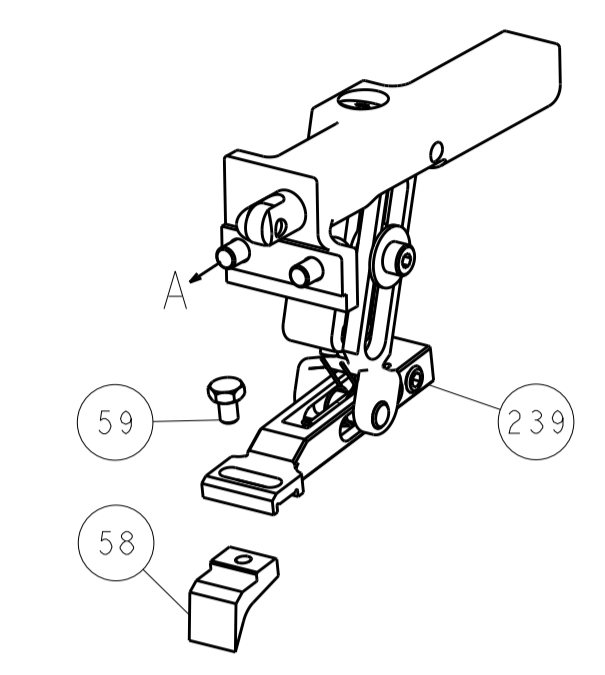
<small>THIS DRAWING IS UNPUBLISHED. RELEASED FOR PUBLICATION. COPYRIGHT © BY TYCO ELECTRONICS CORPORATION. ALL RIGHTS RESERVED.</small>		DWN: HOFFNER 09OCT2013 CHK: T.ELBIN 09OCT2013 APVD: T.ELBIN 09OCT2013	TE Connectivity Harrisburg, PA 17105-3608
DIMENSIONS: mm 		TOLERANCES UNLESS OTHERWISE SPECIFIED: 0 PLC ± 1 PLC ± 2 PLC ± 3 PLC ± 4 PLC ± ANGLES ± FINISH ±	NAME: Ocean End Feed Applicator PRODUCT SPEC: - APPLICATION SPEC: - SIZE: A1 CAGE CODE: 00779 DRAWING NO: C=2150379 RESTRICTED TO: - WEIGHT: - SCALE: 1:1 SHEET: 1 OF 4 REV: B
MATERIAL: -		Customer Accessible Production Drawing	

LOC	DIST	REV	DATE	BY	APPV
A	66				
REVISIONS			DESCRIPTION	DATE	BY
			SEE SHEET 1		

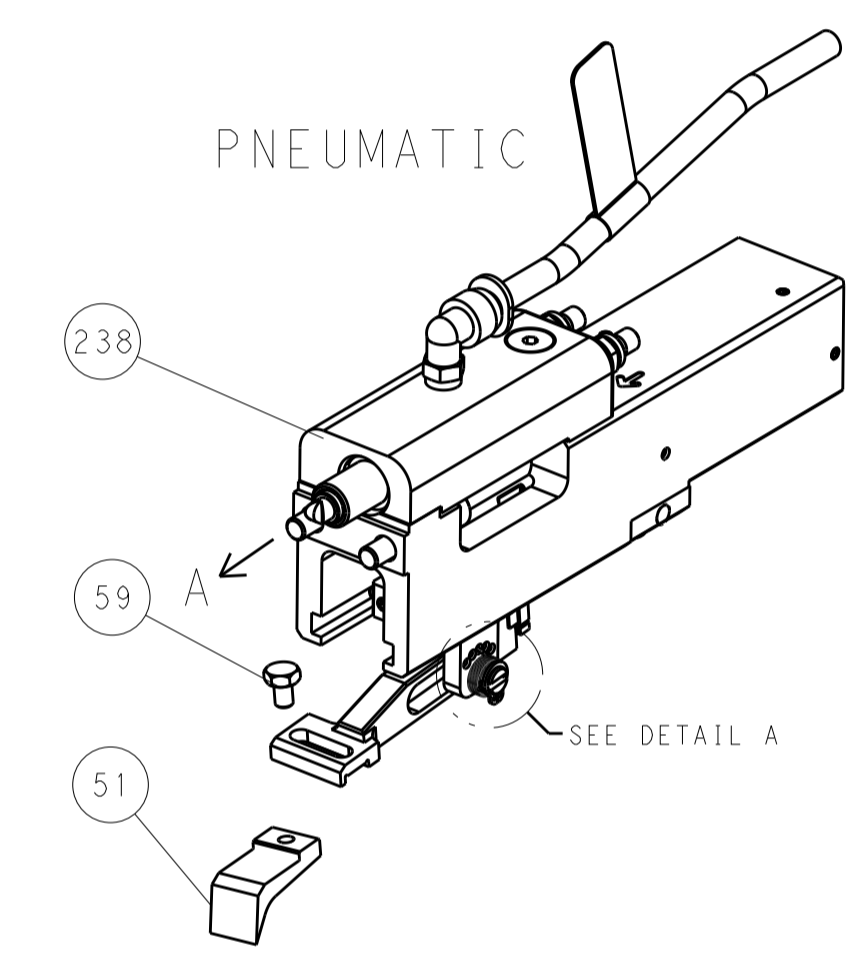
FEED TYPE MECHANICAL



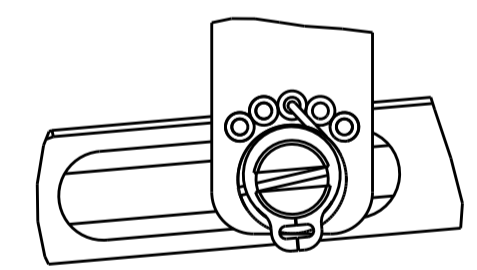
RAM SET-UP



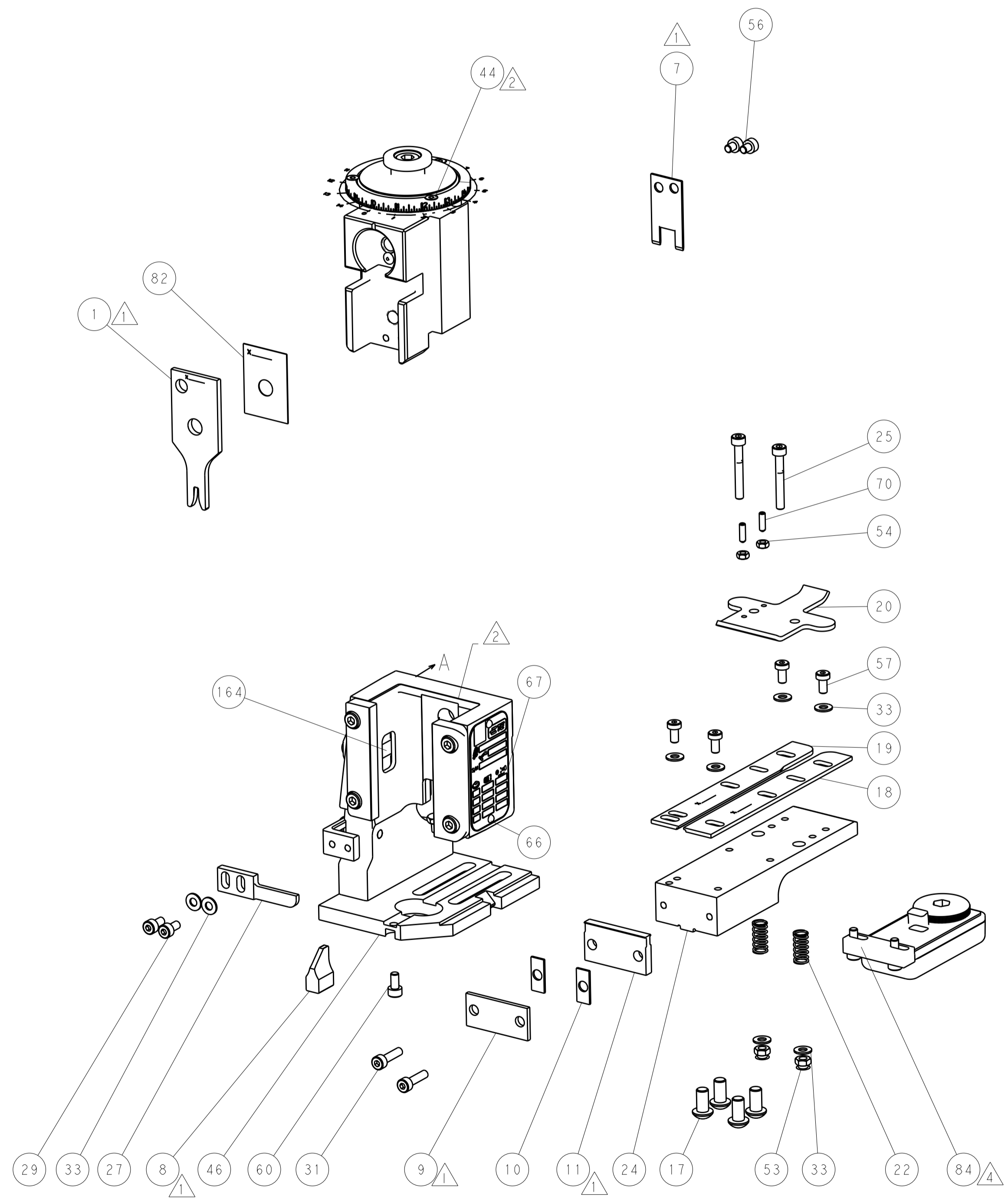
PNEUMATIC



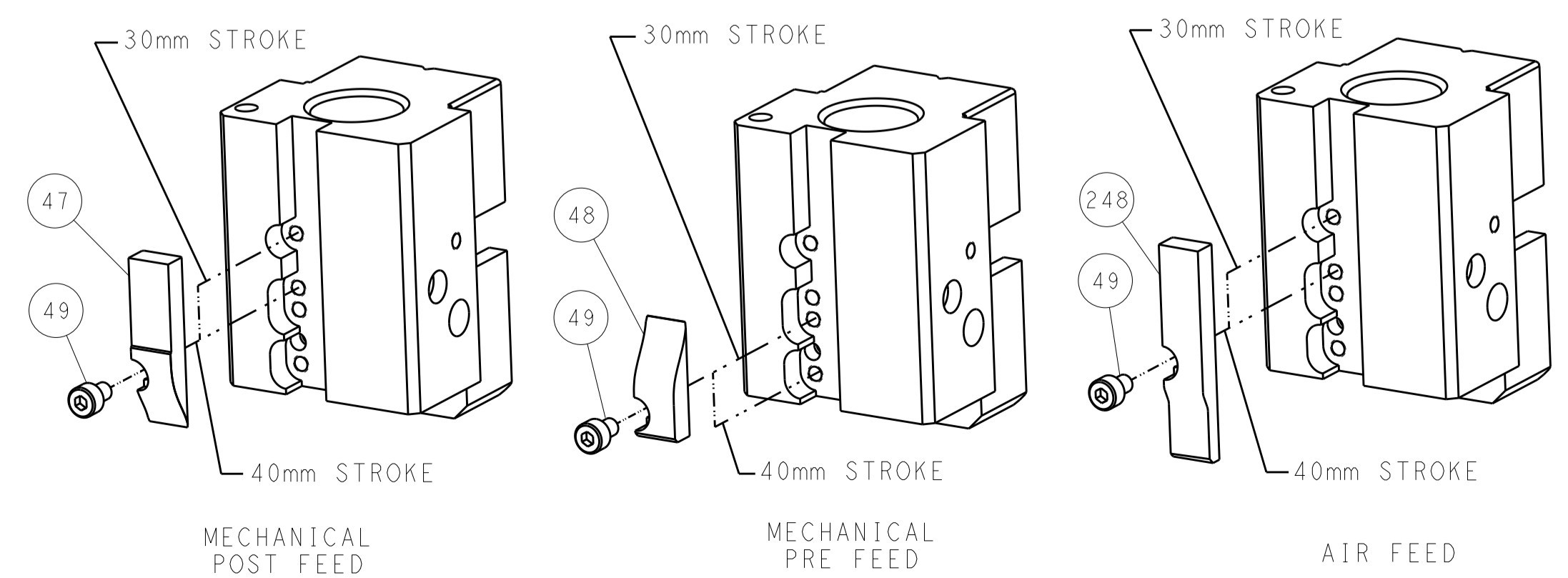
FEED SPRING
SETTING POSITION



DETAIL A



CAM POSITIONS

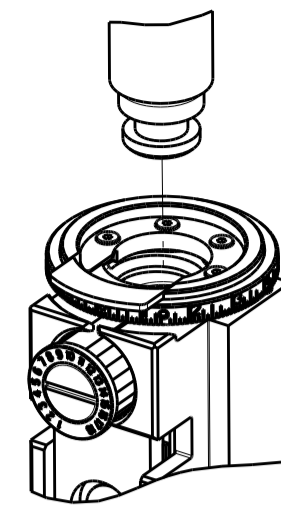


ATLANTIC VERSION
 Shown on sheets 1 of 4 & 2 of 4
 (Pacific version shown on sheets 3 of 4 & 4 of 4)

<small>THIS DRAWING IS UNPUBLISHED. RELEASED FOR PUBLICATION. IT IS THE PROPERTY OF TYCO ELECTRONICS CORPORATION. IT IS TO BE USED ONLY FOR THE PURPOSES AND IN THE QUANTITIES SPECIFIED BY THE PURCHASING ORGANIZATION. IT IS TO BE RETURNED TO TYCO ELECTRONICS CORPORATION WHEN NO LONGER REQUIRED.</small>		DWN: HOFFNER 09OCT2013 CHK: TELBIN 09OCT2013 APVD: TELBIN 09OCT2013	TE Connectivity Harrisburg, PA 17105-3608
DIMENSIONS: mm TOLERANCES UNLESS OTHERWISE SPECIFIED: 0 PLC ± 1 PLC ± 2 PLC ± 3 PLC ± 4 PLC ± ANGLES ±		NAME: Ocean End Feed Applicator SIZE: A1 CAGE CODE: 00779 DRAWING NO: 2150379	RESTRICTED TO: - SCALE: 1:1 SHEET: 2 of 4 REV: B
MATERIAL: - FINISH: -		WEIGHT: - PRODUCT SPEC: - APPLICATION SPEC: -	Customer Accessible Production Drawing

PART NUMBER	REVISION	DESCRIPTION	FEED TYPE
2-2150379-1	B	FINE CRIMP HEIGHT ADJUST	MECHANICAL
2-2150379-2	B	FINE CRIMP HEIGHT ADJUST	PNEUMATIC
7-2150379-7	A	CRIMP TOOLING KIT	-

PACIFIC VERSION TERMINATOR
INTERFACE ADAPTER

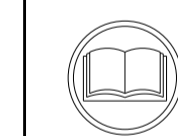


APPLICATOR DATA		
CRIMP	SIZE	TYPE
WIRE	2.54 mm [.100]	F
INSUL	-	-

APPLICATOR INSTRUCTIONS
408-35043

TERMINAL DATA: TE TERMINAL		TE CRIMP SPECIFICATION	
TERMINAL NAME: RING			
WIRE STRIP LENGTH		INSULATION DIAMETER RANGE	
3.58-4.34 mm [.141-.171 IN]			
TERMINAL APPLICATION SPECIFICATION	114-2084	-	-
TERMINALS APPLIED ⁴			
TE TERMINAL	TE TERMINAL	TE TERMINAL	TE TERMINAL
40668	40777	40816	

WIRE SIZE	CRIMP HEIGHT mm [INCH]	CRIMP HEIGHT REFERENCE SETTING ³
16 AWG	1.70 +/- 0.050 [.067 +/- .002]	4.6
18 AWG	1.52 +/- 0.050 [.060 +/- .002]	6.6
20 AWG	1.42 +/- 0.050 [.056 +/- .002]	7.6



- ¹ RECOMMENDED SPARE PARTS
 - ² REFER TO SUPPLIED INSTRUCTION SHEET FOR CLEANING, LUBRICATION AND STORAGE OF APPLICATOR.
 - ³ CRIMP HEIGHT REFERENCE SETTING WAS THE SETTING USED WHEN THE APPLICATOR WAS QUALIFIED AT THE FACTORY. ADJUSTMENT MAY BE NECESSARY WHEN RUNNING APPLICATOR IN THE FIELD.
 - ⁴ TERMINAL LUBRICANT IS RECOMMENDED.
5. UNLESS SPECIFIED OTHERWISE TORQUE VALUES SHALL BE USED PER DOCUMENT, 101-35000.

***WARNING**
ON INSTALLATION, SET WIRE DISC TO CRIMP HEIGHT REFERENCE SETTING FOR LARGEST WIRE SIZE. CRIMP HEIGHT REFERENCE SETTINGS GREATER THAN THE VALUE SHOWN MAY CAUSE DAMAGE TO THE CRIMP TOOLING, REFER TO THE INSTRUCTION SHEET FOR PROPER SETUP AND ADJUSTMENTS.

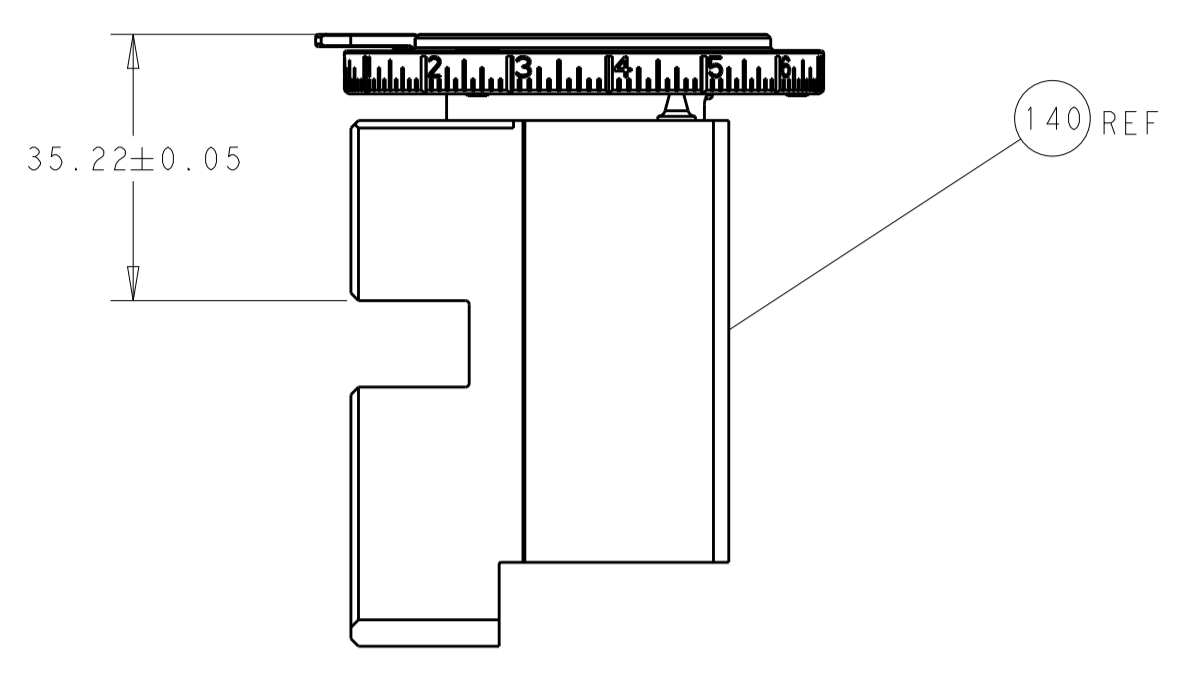
PACIFIC VERSION
Shown on sheets 3 of 4 & 4 of 4
(Atlantic version shown on sheets 1 of 4 & 2 of 4)

LOC	DIST	REV	LTN	DESCRIPTION	DATE	OWN	APVD
A	66	-	-	SEE SHEET 1	-	-	-

-	-	1	2119580-1	MECHANICAL FEED ASSEMBLY	239	
-	1	-	2844940-3	AIR FEED MODULE	238	
-	4	4	2079383-9	SCR, BHSC, RoHS (M6 X 20)	186	
-	REF	REF	994970-2	COUNTER, MAGNETIC	164	
-	1	-	2119641-2	FEED CAM, AIR FEED	152	
-	1	1	2168083-8	SCR, SKT HD CAP, RoHS, M4 X 16	144	
-	-	1	2119653-2	FEED CAM, POST FEED	142	
-	1	1	2119655-6	APPLICATOR BASIC ASSEMBLY, EF	141	
-	1	1	1803518-1	RAM ASSEMBLY, EF PACIFIC	140	
⁴	-	1	2119955-2	ASSY, LUBRICATOR, END FEED	84	
-	1	1	455888-3	SPACER, CRIMPER	82	
-	1	1	1803607-4	DOCUMENTATION PACKAGE	71	
-	2	2	2-18032-2	SCR, SET, FLT PNT, M3 X 10.0	70	
-	1	1	2119740-1	TAG, IDENTIFICATION	67	
-	2	2	2168078-1	SCREW, DRIVE, RH, RoHS, 2 x .188	66	
-	1	1	5-18022-5	SCR, HEX HD CAP, M4 X 6.0	59	
-	-	1	2063961-1	FEED FINGER	58	
-	4	4	2168400-4	SHCS, LOW HEAD, RoHS, M4 X 8	57	
-	2	2	1-2168083-4	SCR, SKT HD CAP, RoHS, M4 X 5	56	
-	2	2	5018030-1	NUT, HEX, REG, RoHS, M3	54	
-	2	2	986965-8	NUT, LOCK, HEX, TORQUE (M4)	53	
-	1	-	2063961-9	FEED FINGER	51	
-	1	2	18023-9	SCR, SKT HD CAP M4 X 6.0	49	
-	-	1	2119652-1	FEED CAM, PRE FEED	48	
-	1	1	1803602-3	SCR, BHSC, RoHS (M8 X 12)	41	
-	8	8	1-18028-2	WASHER, FLAT, REG M4	33	
-	2	2	2168083-8	SCR, SKT HD CAP, RoHS, M4 X 16	31	
-	2	2	2168083-2	SCR, SKT HD CAP, RoHS, M4 X 8.0	29	
-	1	1	240639-1	STRIPPER (MACHINING)	27	
-	2	2	1-2168083-5	SCR, SKT HD CAP, RoHS, M4 X 30	25	
-	1	1	1752371-2	PLATE, STRIP GUIDE	24	
-	2	2	2-22281-3	SPRING, COMPRESSION	22	
-	1	1	1803292-4	DRAG	20	
-	1	1	1901696-1	STRIP GUIDE, REAR	19	
-	1	1	1901695-1	STRIP GUIDE, FRONT	18	
¹	-	1	691901-2	REAR SHEAR PLATE, REVERSIBLE	11	
-	2	2	240645-2	SPACER, SHEAR PLATE	10	
¹	-	1	690783-2	PLATE, SPACER	9	
¹	1	1	1803002-4	ANVIL, COMBINATION, END FEED	8	
¹	-	1	2-691157-7	BLADE, SHEAR -	7	
-	-	-	-	-	6	
-	-	-	-	-	4	
-	-	-	-	-	3	
-	-	-	-	-	2	
¹	1	1	456407-8	CRIMPER, WIRE PREMIUM	1	
-	77	22	21	PART NO	DESCRIPTION	ITEM NO

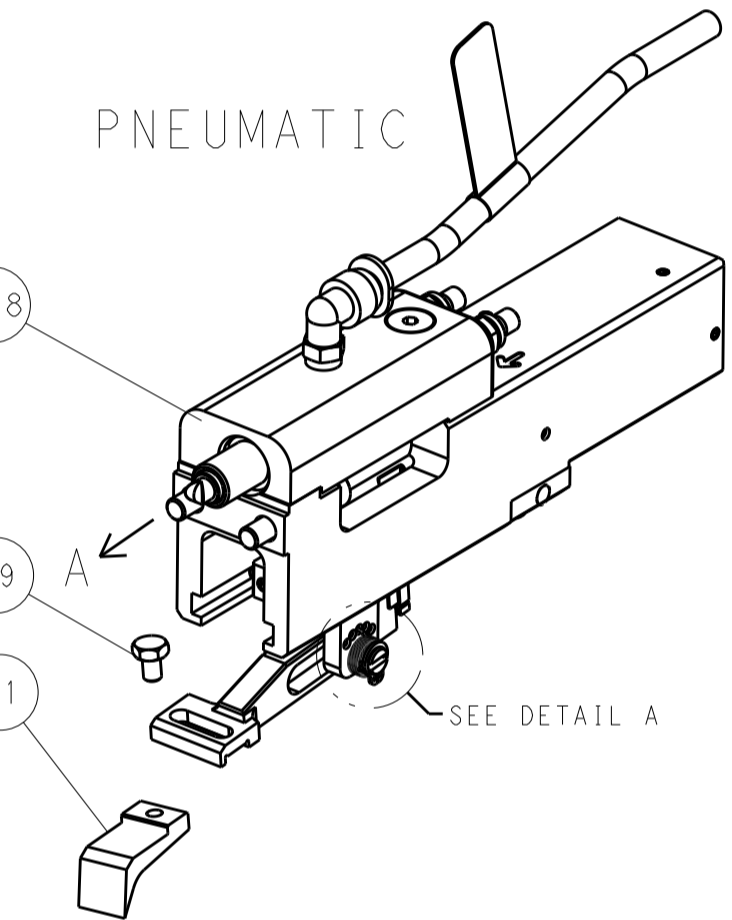
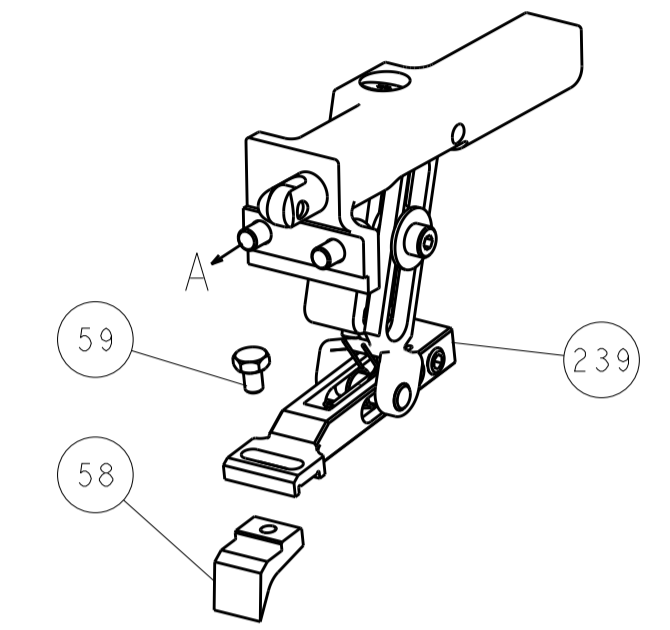
<small>THIS DRAWING IS UNPUBLISHED. IT IS THE PROPERTY OF TYCO ELECTRONICS CORPORATION. IT IS TO BE USED ONLY FOR THE PURPOSES AND IN THE QUANTITIES SPECIFIED IN THE ORDER. IT IS TO BE RETURNED TO TYCO ELECTRONICS CORPORATION WHEN NO LONGER REQUIRED FOR THE LATEST REVISION.</small>		DWN: HOFFNER 09OCT2013 CHK: T. ELBIN 09OCT2013 APVD: T. ELBIN 09OCT2013	TE Connectivity Harrisburg, PA 17105-3608
DIMENSIONS: mm 		TOLERANCES UNLESS OTHERWISE SPECIFIED: 0 PLC ± 1 PLC ± 2 PLC ± 3 PLC ± 4 PLC ± ANGLES ± FINISH ±	NAME: Ocean End Feed Applicator SIZE: A1 CAGE CODE: 00779 DRAWING NO: 2150379 SCALE: 1:1 SHEET 3 OF 4 REV B
MATERIAL: -		WEIGHT: -	Customer Accessible Production Drawing

LOC		DIST		REVISIONS			
A	66	P	LTM	DESCRIPTION	DATE	OWN	APVD
		-		SEE SHEET 1	-	-	-

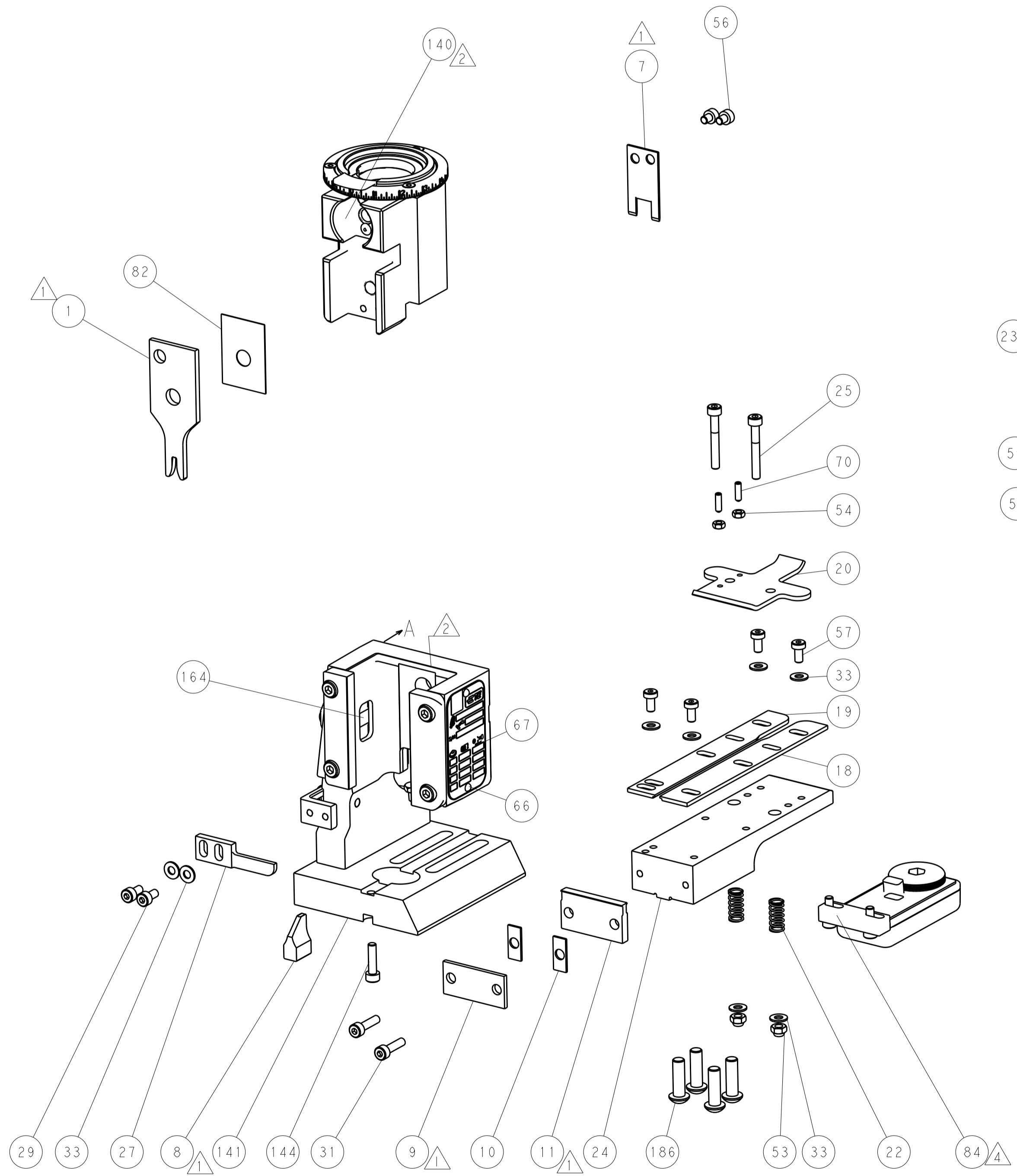
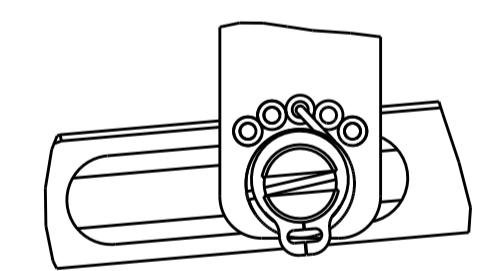


RAM SET-UP

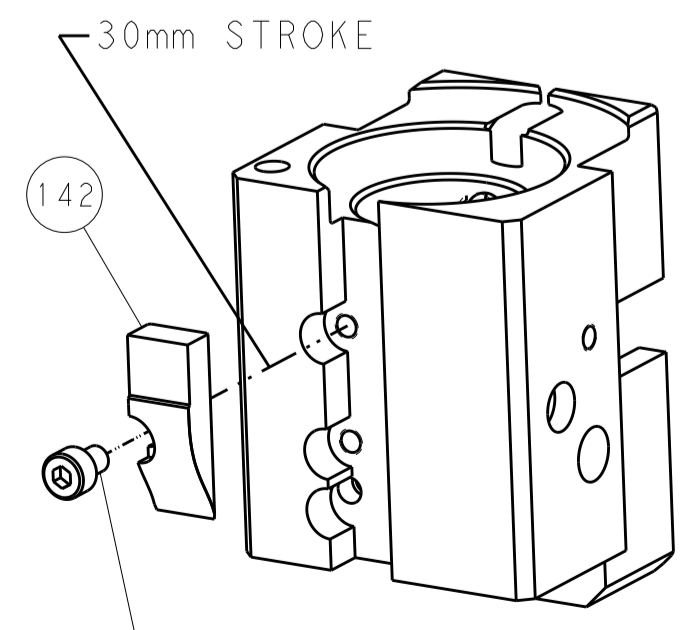
FEED TYPE
MECHANICAL



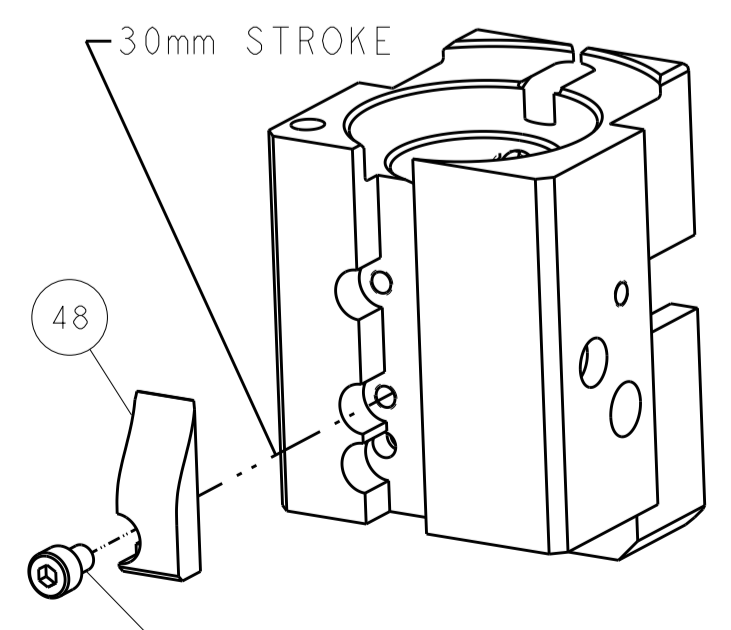
FEED SPRING
SETTING POSITION



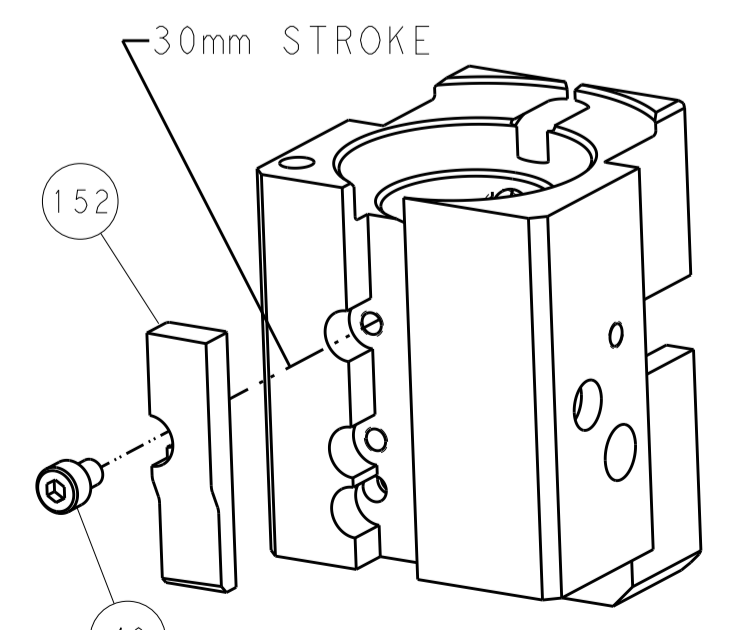
CAM POSITIONS



MECHANICAL POST FEED



MECHANICAL PRE FEED



AIR FEED

PACIFIC VERSION
 Shown on sheets 3 of 4 & 4 of 4
 (Atlantic version shown on sheets 1 of 4 & 2 of 4)

<small>THIS DRAWING IS UNPUBLISHED. RELEASED FOR PUBLICATION BY TYCO ELECTRONICS CORPORATION. ALL RIGHTS RESERVED.</small>		DWN: HOFFNER 09OCT2013 CHK: T.ELBIN 09OCT2013 APVD: T.ELBIN 09OCT2013	STE TE Connectivity Harrisburg, PA 17105-3608
DIMENSIONS: mm TOLERANCES UNLESS OTHERWISE SPECIFIED: 0 PLC ± 1 PLC ± 2 PLC ± 3 PLC ± 4 PLC ± ANGLES ±		NAME: Ocean End Feed Applicator PRODUCT SPEC: APPLICATION SPEC: WEIGHT:	SIZE: A1 CAGE CODE: 00779 DRAWING NO: 2150379 SCALE: 1:1 SHEET: 4 OF 4 REV: B
MATERIAL: FINISH:		RESTRICTED TO: Customer Accessible Production Drawing	