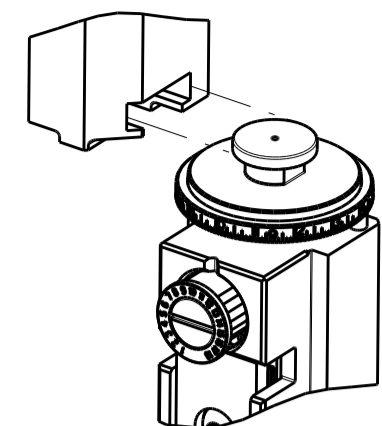


PART NUMBER	REVISION	DESCRIPTION	FEED TYPE
2150369-2	C	FINE CRIMP HEIGHT ADJUST	PNEUMATIC
7-2150369-2	C	PNEUMATIC AND CRIMP TOOLING KIT	PNEUMATIC
7-2150369-7	A	CRIMP TOOLING KIT	-

ATLANTIC VERSION TERMINATOR INTERFACE ADAPTER



APPLICATOR DATA		
CRIMP	SIZE	TYPE
WIRE	3.05 mm [.120]	F
INSUL	4.57 mm [.180]	F

APPLICATOR INSTRUCTIONS 408-35043

TERMINAL DATA: TE TERMINAL TE CRIMP SPECIFICATION			
TERMINAL NAME: FASTIN-FASTON RECEPTACLE SERIE 9.5			
WIRE STRIP LENGTH	INSULATION DIAMETER RANGE		
4.80-5.60 mm [.189-.220 IN]	∅2.40-3.70 mm [.094-.146 IN]		
TERMINAL APPLICATION SPECIFICATION	114-18022	-	-
TERMINALS APPLIED			
TE TERMINAL	TE TERMINAL	TE TERMINAL	TE TERMINAL
962835-1	962835-2	962835-3	8-962835-3

WIRE SIZE	CRIMP HEIGHT mm [INCH]	CRIMP HEIGHT REFERENCE SETTING
2.50mm ²	2.18+/-0.05 [.086+/- .002]	4.8
2.00mm ²	2.05+/-0.05 [.081+/- .002]	6.4
1.50mm ²	1.92+/-0.05 [.076+/- .002]	7.8



- 1. RECOMMENDED SPARE PARTS
- 2. REFER TO SUPPLIED INSTRUCTION SHEET FOR CLEANING, LUBRICATION AND STORAGE OF APPLICATOR.
- 3. APPLY PART NUMBER 2-23419-6 LOCTITE TO THREADS OF ITEM 242.
- 4. CRIMP HEIGHT REFERENCE SETTING WAS THE SETTING USED WHEN THE APPLICATOR WAS QUALIFIED AT THE FACTORY. ADJUSTMENT MAY BE NECESSARY WHEN RUNNING APPLICATOR IN THE FIELD.
- 5. TERMINAL PITCH NOT COMPATIBLE WITH MECHANICAL FEED.
- 6. UNLESS SPECIFIED OTHERWISE TORQUE VALUES SHALL BE USED PER DOCUMENT, 101-35000.

***WARNING**
ON INSTALLATION, SET WIRE DISC TO CRIMP HEIGHT REFERENCE SETTING FOR LARGEST WIRE SIZE. CRIMP HEIGHT REFERENCE SETTINGS GREATER THAN THE VALUE SHOWN MAY CAUSE DAMAGE TO THE CRIMP TOOLING, REFER TO THE INSTRUCTION SHEET FOR PROPER SETUP AND ADJUSTMENTS.

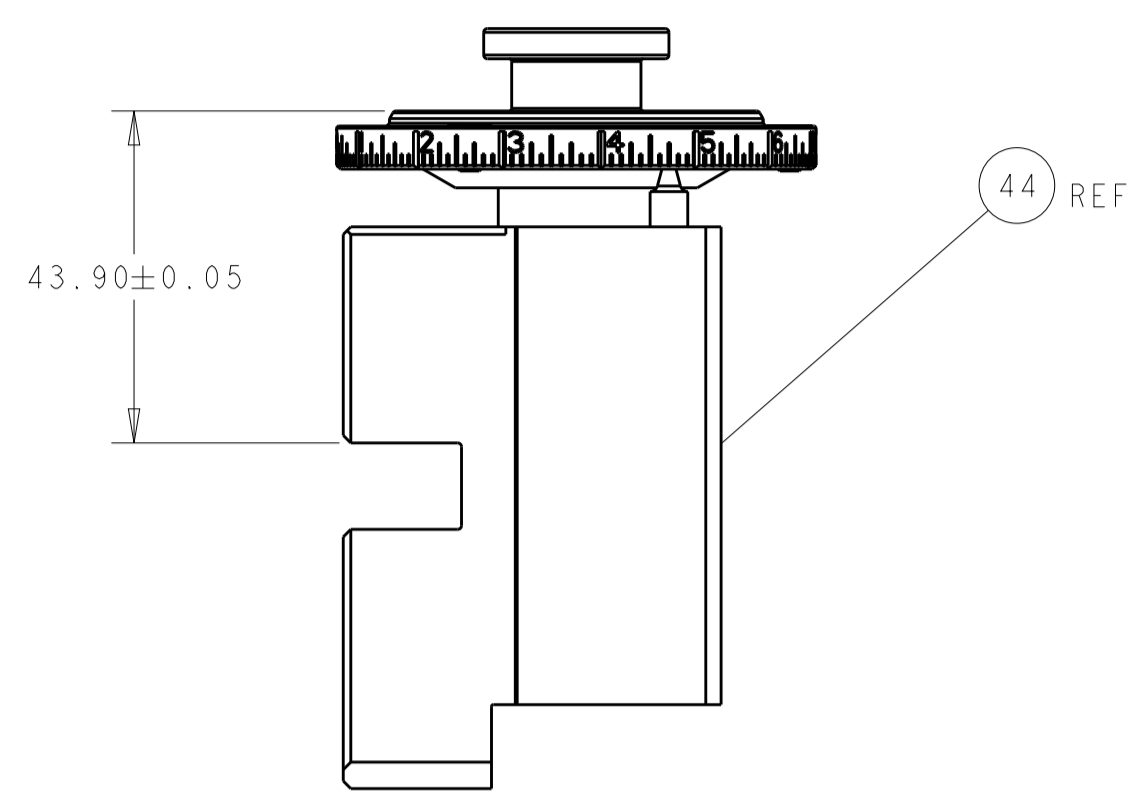
LOC	DIST	REVISIONS					
		REV	LTN	DESCRIPTION	DATE	DWN	APVD
A	66	A		RELEASED	05NOV2013	BH	GB
		B		ECR-16-001409	29JAN2016	JH	CT
		C		ECR-19-018118	20NOV2019	FZ	TE

-	1	1	2119641-1	FEED CAM, AIR FEED	248	
-	1	1	2119082-9	CAM, SNAIL, INSULATION ADJUSTMENT	244	
-	1	1	2079764-1	WASHER, WAVE SPRING, CREST-TO-CREST	243	
-	1	1	2119083-1	RETAINER, INSULATION DIAL	242	
-	1	1	2844940-4	AIR FEED MODULE	238	
-	1	1	1-18028-0	WASHER, FLAT, REG M8	192	
-	REF	REF	994970-2	COUNTER, MAGNETIC	164	
-	1	1	455888-4	SPACER, CRIMPER	82	
-	1	1	1803607-4	DOCUMENTATION PACKAGE	71	
-	2	2	2-18032-2	SCR, SET, FLT PNT, M3 X 10.0	70	
-	1	1	2119740-1	TAG, IDENTIFICATION	67	
-	2	2	2168078-1	SCREW, DRIVE, RH, RoHS, 2 x .188	66	
-	2	2	2168083-8	SCR, SKT HD CAP, RoHS, M4 X 16	64	
-	1	1	2168083-2	SCR, SKT HD CAP, RoHS, M4 X 8.0	60	
-	1	1	5-18022-5	SCR, HEX HD CAP, M4 X 6.0	59	
-	3	3	2168400-4	SHCS, LOW HEAD, RoHS, M4 X 8	57	
-	2	2	2-2168083-6	SCR, SKT HD CAP, RoHS, M4 X 18	56	
-	2	2	5018030-1	NUT, HEX, REG, RoHS, M3	54	
-	2	2	986965-8	NUT, LOCK, HEX, TORQUE (M4)	53	
-	1	1	2063961-1	FEED FINGER	51	
-	1	1	18023-9	SCR, SKT HD CAP M4 X 6.0	49	
-	1	1	2119655-5	APPLICATOR BASIC ASSEMBLY, EF	46	
-	1	1	1803517-1	RAM ASSEMBLY, EF ATLANTIC	44	
-	1	1	1803602-1	SCR, BHSC, RoHS (M8 X 25)	41	
-	7	7	1-18028-2	WASHER, FLAT, REG M4	33	
-	2	2	2168083-8	SCR, SKT HD CAP, RoHS, M4 X 16	31	
-	2	2	1-2168083-0	SCR, SKT HD CAP, RoHS, M4 X 10	29	
-	1	1	240639-1	STRIPPER (MACHINING)	27	
-	2	2	1-2168083-5	SCR, SKT HD CAP, RoHS, M4 X 30	25	
-	1	1	1752371-6	PLATE, STRIP GUIDE	24	
-	1	1	240825-1	PLATE, STRIP HOLD DOWN	23	
-	2	2	2-22281-3	SPRING, COMPRESSION	22	
-	1	1	1803292-4	DRAG	20	
-	2	2	1901259-6	GUIDE, LOWER STRIP	18	
-	4	4	1-2079383-1	SCR, BHSC, RoHS (M6 X 12)	17	
-	1	1	240641-7	SPACER	16	
-	1	1	240833-7	PLATE, REAR SHEAR	11	
-	-	-	-	-	10	
-	1	1	1-690482-2	PLATE, FRONT SHEAR	9	
-	1	2	1333220-4	ANVIL, COMBINATION, .120	8	
-	1	1	2217206-8	BLADE, SLUG	7	
-	-	-	-	-	6	
-	1	1	5-240641-7	SPACER	5	
-	1	1	238011-2	BLOCK, CRIMPER SPACER	4	
-	1	2	2119582-3	CRIMPER, INSULATION F PREMIUM	3	
-	1	1	1-455888-4	SPACER, CRIMPER	2	
-	1	2	456409-3	CRIMPER, WIRE .120 "F" PREMIUM	1	
-	77	72	-2	PART NO	DESCRIPTION	ITEM NO

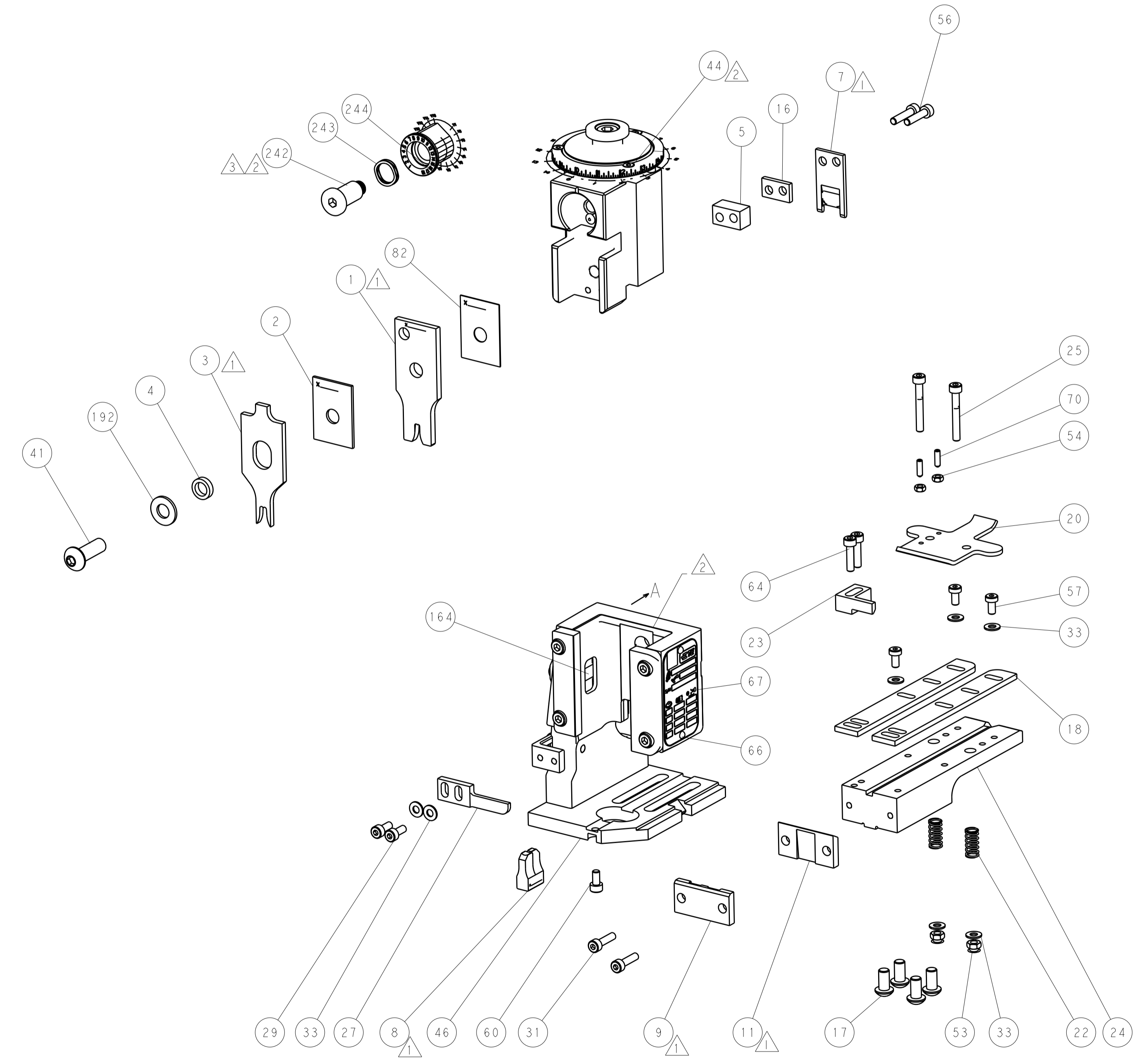
ATLANTIC VERSION
Shown on sheets 1 of 4 & 2 of 4
(Pacific version shown on sheets 3 of 4 & 4 of 4)

DIMENSIONS: mm		TOLERANCES UNLESS OTHERWISE SPECIFIED:		DWN: STAKEM 27SEPT2013		CHK: G. BAILEY 27SEPT2013		APVD: T. ERLIN 27SEPT2013		NAME: Ocean End Feed Applicator	
0 PLC ±		1 PLC ±		2 PLC ±		3 PLC ±		4 PLC ±		SIZE: A1	
MATERIAL: -		FINISH: -		WEIGHT: -		CAGE CODE: 00779		DRAWING NO: 2150369		RESTRICTED TO: -	
Customer Accessible Production Drawing										SCALE: 1:1 SHEET 1 OF 4 REV C	

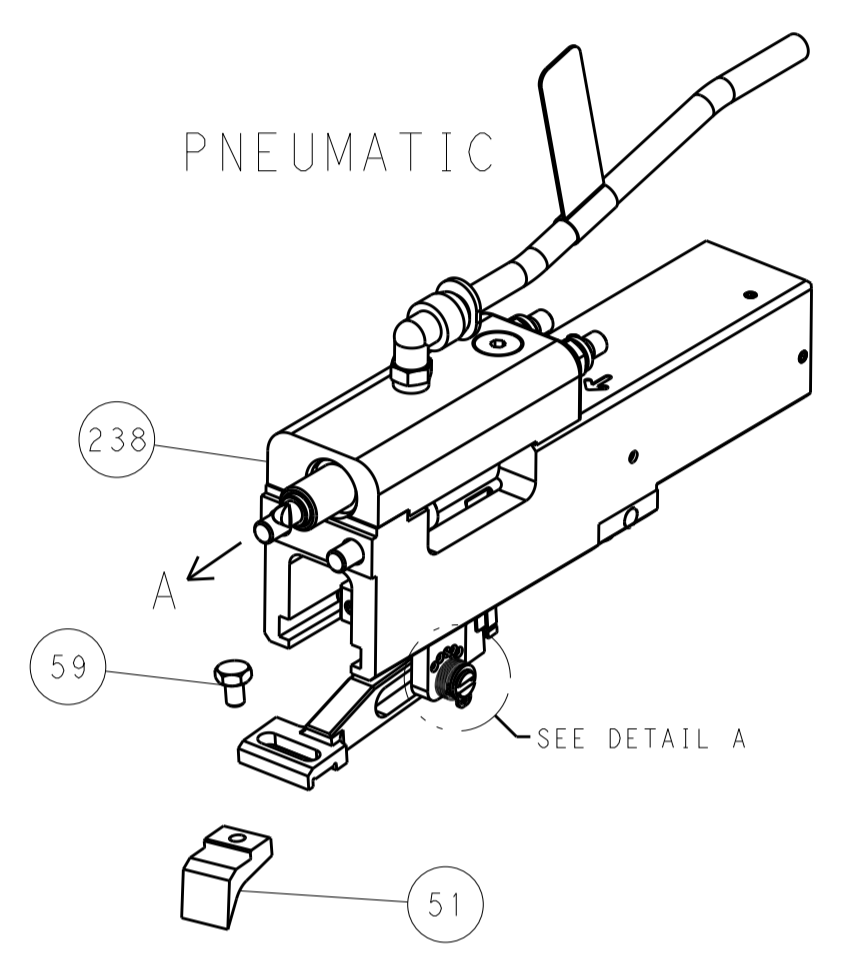
LOC	DIST	REV	DATE	BY	APPV
A	66				



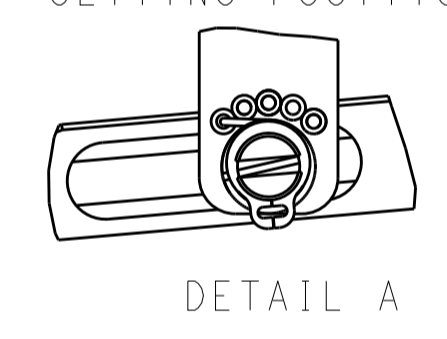
RAM SET-UP



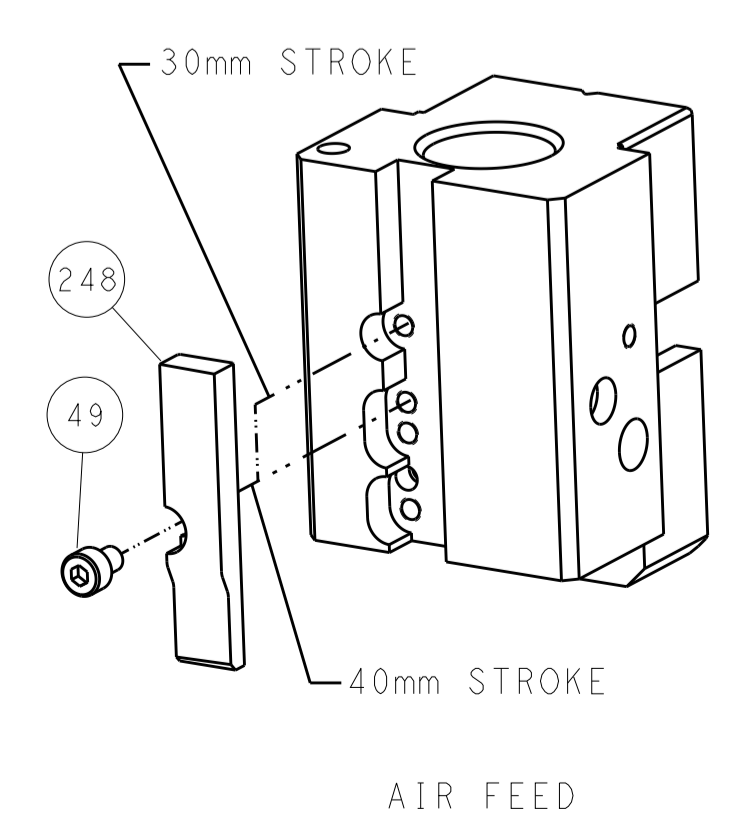
FEED TYPE



FEED SPRING SETTING POSITION



CAM POSITIONS

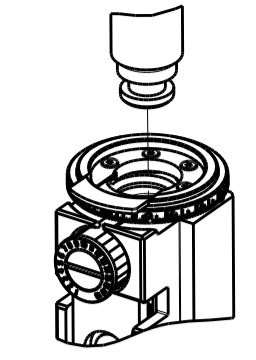


ATLANTIC VERSION
 Shown on sheets 1 of 4 & 2 of 4
 (Pacific version shown on sheets 3 of 4 & 4 of 4)

DIMENSIONS: mm 		TOLERANCES UNLESS OTHERWISE SPECIFIED: 0 PLC ± 1 PLC ± 2 PLC ± 3 PLC ± 4 PLC ± ANGLES ±		DWN: K. STAKEM 27SEPT2013 CHK: G. BAILEY 27SEPT2013 APVD: T. ERLIN 27SEPT2013		NAME: Ocean End Feed Applicator SIZE: A1 CAGE CODE: 00779 DRAWING NO: 2150369		RESTRICTED TO: - SCALE: 1:1 SHEET: 2 OF 4 REV: C	
MATERIAL: - FINISH: -				WEIGHT: - Customer Accessible Production Drawing		TE Connectivity Harrisburg, PA 17105-3608		SHEETS 3 & 4 ARE NOT REQUIRED FOR ATLANTIC VERSION	

PART NUMBER	REVISION	DESCRIPTION	FEED TYPE
2-2150369-2	C	FINE CRIMP HEIGHT ADJUST	PNEUMATIC
7-2150369-7	A	CRIMP TOOLING KIT	-

PACIFIC VERSION TERMINATOR
 INTERFACE ADAPTER



APPLICATOR DATA

CRIMP	SIZE	TYPE
WIRE	3.05 mm [.120]	F
INSUL	4.57 mm [.180]	F

APPLICATOR INSTRUCTIONS
 408-35043

TERMINAL DATA: TE TERMINAL TE CRIMP SPECIFICATION

TERMINAL NAME: FASTIN-FASTON RECEPTACLE SERIE 9.5

WIRE STRIP LENGTH	INSULATION DIAMETER RANGE
4.80-5.60 mm [.189-.220 IN]	∅2.40-3.70 mm [.094-.146 IN]

TERMINAL APPLICATION SPECIFICATION 114-18022

TERMINALS APPLIED

TE TERMINAL	TE TERMINAL	TE TERMINAL	TE TERMINAL
962835-1	962835-2	962835-3	8-962835-3

WIRE SIZE	CRIMP HEIGHT mm [INCH]	CRIMP HEIGHT REFERENCE SETTING
2.50mm2	2.18+/-0.05 [.086+/- .002]	4.8
2.00mm2	2.05+/-0.05 [.081+/- .002]	6.4
1.50mm2	1.92+/-0.05 [.076+/- .002]	7.8



- 1 RECOMMENDED SPARE PARTS
- 2 REFER TO SUPPLIED INSTRUCTION SHEET FOR CLEANING, LUBRICATION AND STORAGE OF APPLICATOR.
- 3 APPLY PART NUMBER 2-23419-6 LOCTITE TO THREADS OF ITEM 242.
- 4 CRIMP HEIGHT REFERENCE SETTING WAS THE SETTING USED WHEN THE APPLICATOR WAS QUALIFIED AT THE FACTORY. ADJUSTMENT MAY BE NECESSARY WHEN RUNNING APPLICATOR IN THE FIELD.
- 5 TERMINAL PITCH NOT COMPATIBLE WITH MECHANICAL FEED.
- 6. UNLESS SPECIFIED OTHERWISE TORQUE VALUES SHALL BE USED PER DOCUMENT, 101-35000.

***WARNING**
 ON INSTALLATION, SET WIRE DISC TO CRIMP HEIGHT REFERENCE SETTING FOR LARGEST WIRE SIZE. CRIMP HEIGHT REFERENCE SETTINGS GREATER THAN THE VALUE SHOWN MAY CAUSE DAMAGE TO THE CRIMP TOOLING, REFER TO THE INSTRUCTION SHEET FOR PROPER SETUP AND ADJUSTMENTS.

PACIFIC VERSION
 Shown on sheets 3 of 4 & 4 of 4
 (Atlantic version shown on sheets 1 of 4 & 2 of 4)

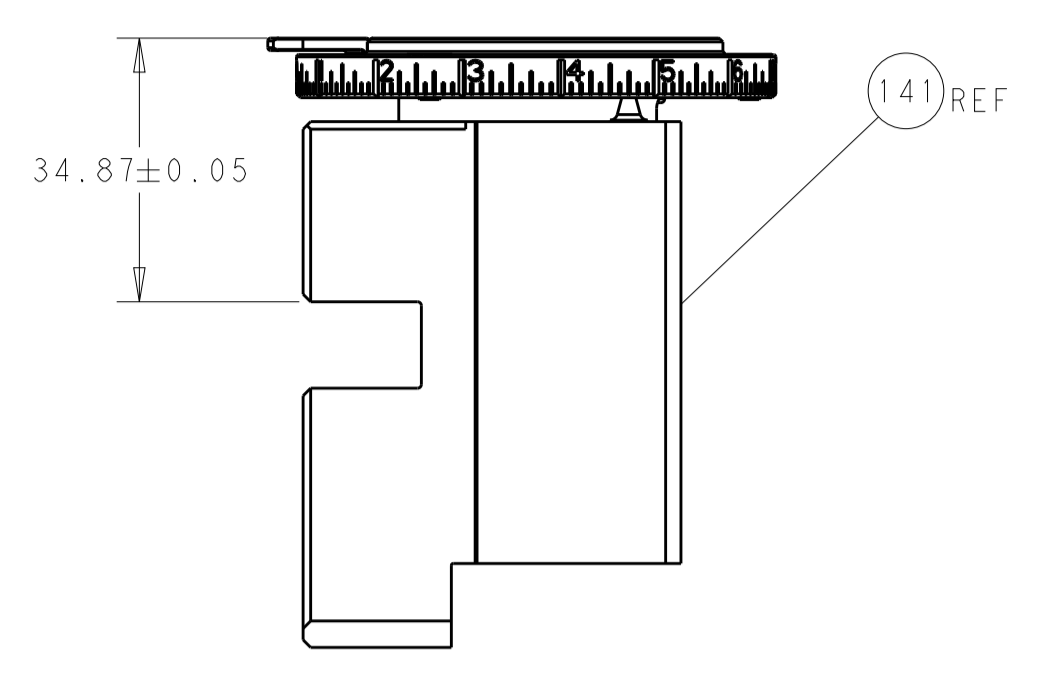
LOC	DIST	REV	DATE	BY	APPD
A	66				

QTY	DESCRIPTION	DATE	BY	APPD
- 1	2119082-9 CAM, SNAIL, INSULATION ADJUSTMENT	244		
- 1	2079764-1 WASHER, WAVE SPRING, CREST-TO-CREST	243		
- 1	2119083-1 RETAINER, INSULATION DIAL	242		
- 1	2844940-4 AIR FEED MODULE	238		
- 1	1-18028-0 WASHER, FLAT, REG M8	192		
- 4	2079383-9 SCR, BHSC, RoHS (M6 X 20)	186		
- REF	994970-2 COUNTER, MAGNETIC	164		
- 1	2119641-2 FEED CAM, AIR FEED	152		
- 1	2168083-8 SCR, SKT HD CAP, RoHS, M4 X 16	144		
- 1	2119655-6 APPLICATOR BASIC ASSEMBLY, EF	141		
- 1	1803518-1 RAM ASSEMBLY, EF PACIFIC	140		
- 1	455888-4 SPACER, CRIMPER	82		
- 1	1803607-4 DOCUMENTATION PACKAGE	71		
- 2	2-18032-2 SCR, SET, FLT PNT, M3 X 10.0	70		
- 1	2119740-1 TAG, IDENTIFICATION	67		
- 2	2168078-1 SCREW, DRIVE, RH, RoHS, 2 x .188	66		
- 2	2168083-8 SCR, SKT HD CAP, RoHS, M4 X 16	64		
- 1	5-18022-5 SCR, HEX HD CAP, M4 X 6.0	59		
- 3	2168400-4 SHCS, LOW HEAD, RoHS, M4 X 8	57		
- 2	2-2168083-6 SCR, SKT HD CAP, RoHS, M4 X 18	56		
- 2	5018030-1 NUT, HEX, REG, RoHS, M3	54		
- 2	986965-8 NUT, LOCK, HEX, TORQUE (M4)	53		
- 1	2063961-1 FEED FINGER	51		
- 1	18023-9 SCR, SKT HD CAP M4 X 6.0	49		
- 1	1803602-1 SCR, BHSC, RoHS (M8 X 25)	41		
- 7	1-18028-2 WASHER, FLAT, REG M4	33		
- 2	2168083-8 SCR, SKT HD CAP, RoHS, M4 X 16	31		
- 2	1-2168083-0 SCR, SKT HD CAP, RoHS, M4 X 10	29		
- 1	240639-1 STRIPPER (MACHINING)	27		
- 2	1-2168083-5 SCR, SKT HD CAP, RoHS, M4 X 30	25		
- 1	1752371-6 PLATE, STRIP GUIDE	24		
- 1	240825-1 PLATE, STRIP HOLD DOWN	23		
- 2	2-22281-3 SPRING, COMPRESSION	22		
- 1	1803292-4 DRAG	20		
- 2	1901259-6 GUIDE, LOWER STRIP	18		
- 1	240641-7 SPACER	16		
- 1	240833-7 PLATE, REAR SHEAR	11		
- -	-	10		
- 1	1-690482-2 PLATE, FRONT SHEAR	9		
1 1	1333220-4 ANVIL, COMBINATION, .120	8		
- 1	2217206-8 BLADE, SLUG	7		
- -	-	6		
- 1	5-240641-7 SPACER	5		
- 1	238011-2 BLOCK, CRIMPER SPACER	4		
1 1	2119582-3 CRIMPER, INSULATION F PREMIUM	3		
- 1	1-455888-4 SPACER, CRIMPER	2		
1 1	456409-3 CRIMPER, WIRE .120 "F" PREMIUM	1		

ITEM NO	PART NO	DESCRIPTION
-77-22		

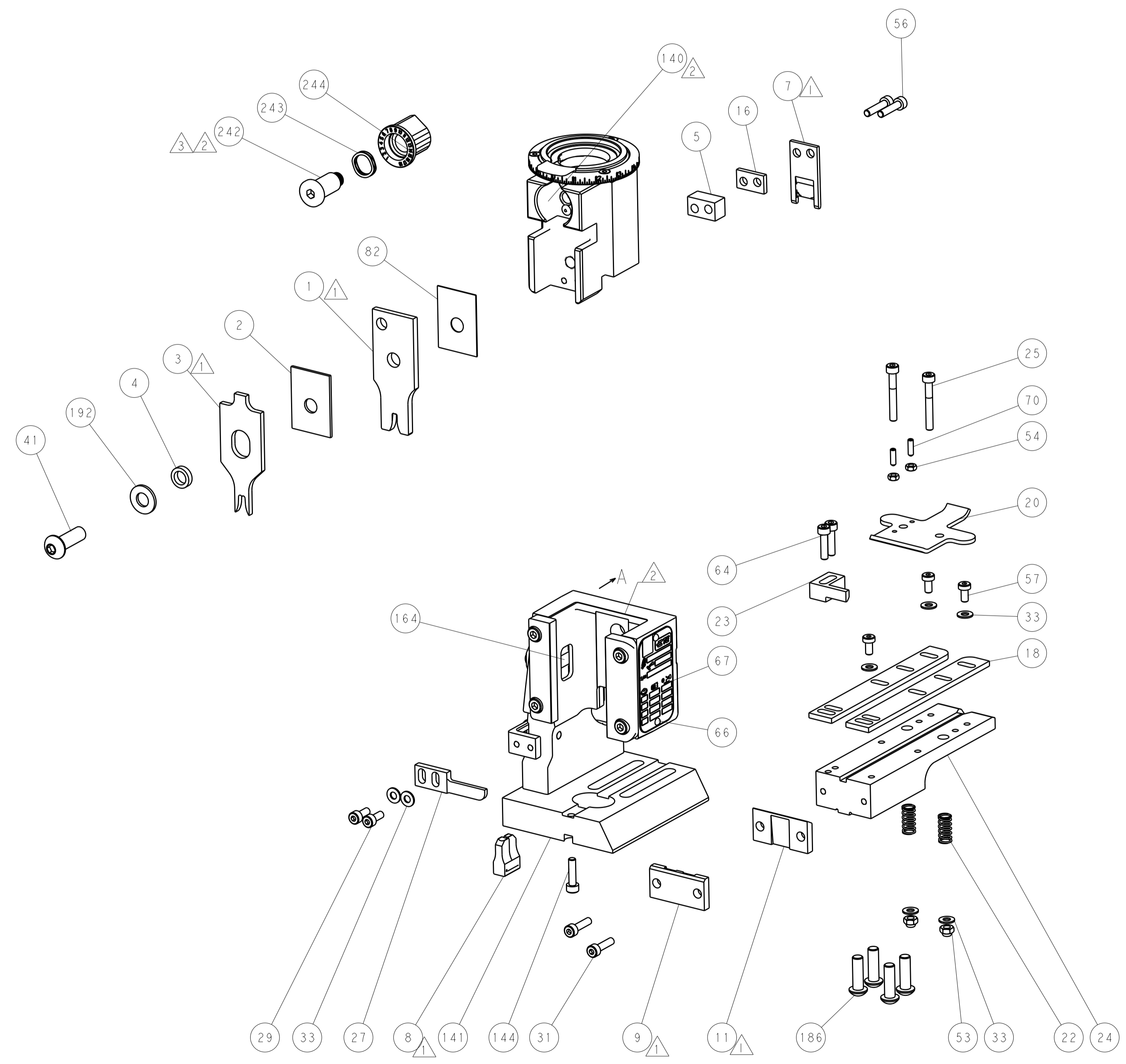
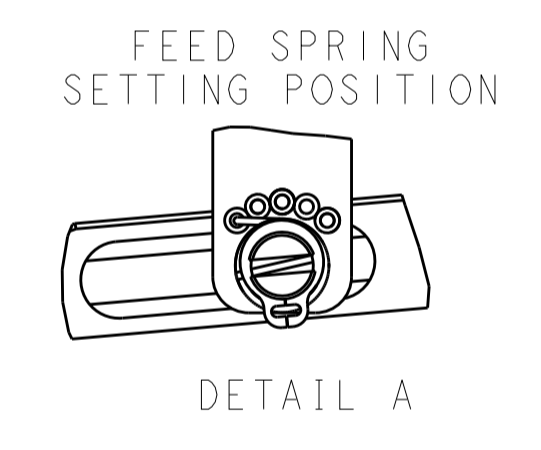
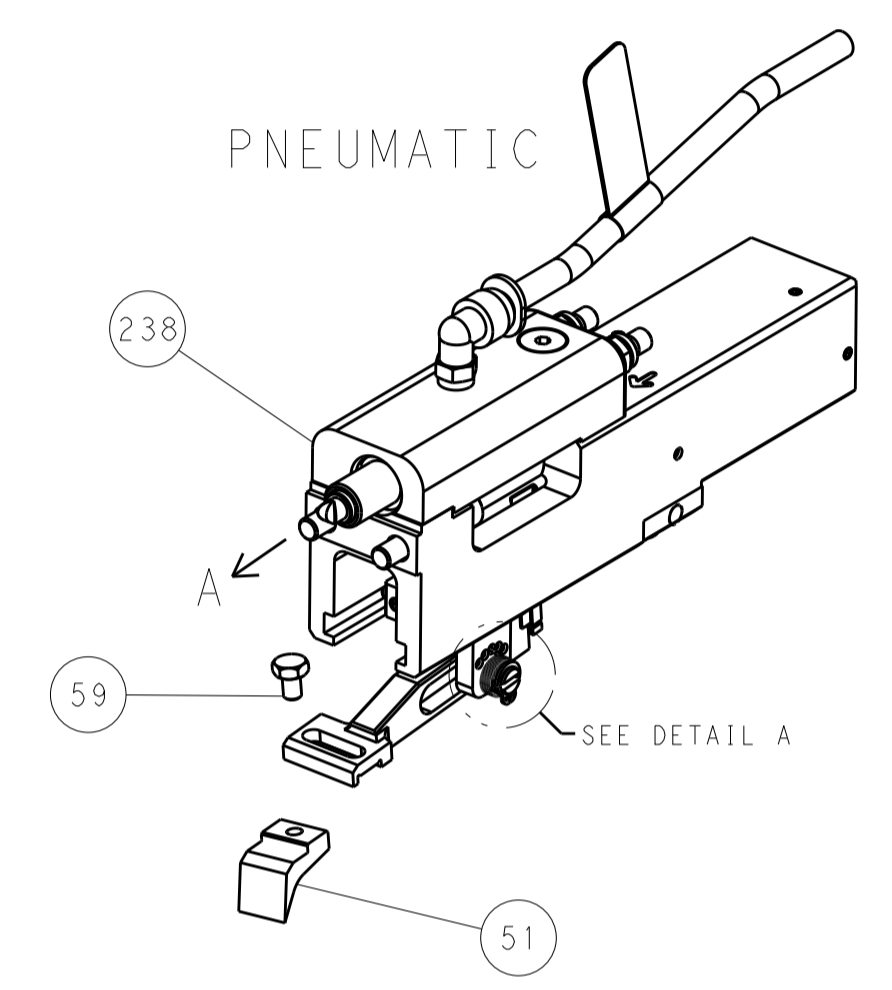
CHK: STAKEM 27SEPT2013	CHK: G. BAILEY 27SEPT2013	CHK: ERLIN 27SEPT2013
APVD: T. ERLIN 27SEPT2013	NAME: Ocean End Feed Applicator	
PRODUCT SPEC: -		
APPLICATION SPEC: -		
SIZE: A1 00779 C=2150369		
SCALE: 1:1 SHEET 3 OF 4		

LOC		DIST		REVISIONS			
A	66	P	LTM	DESCRIPTION	DATE	DWN	APVD
		-	-	SEE SHEET 1	-	-	-

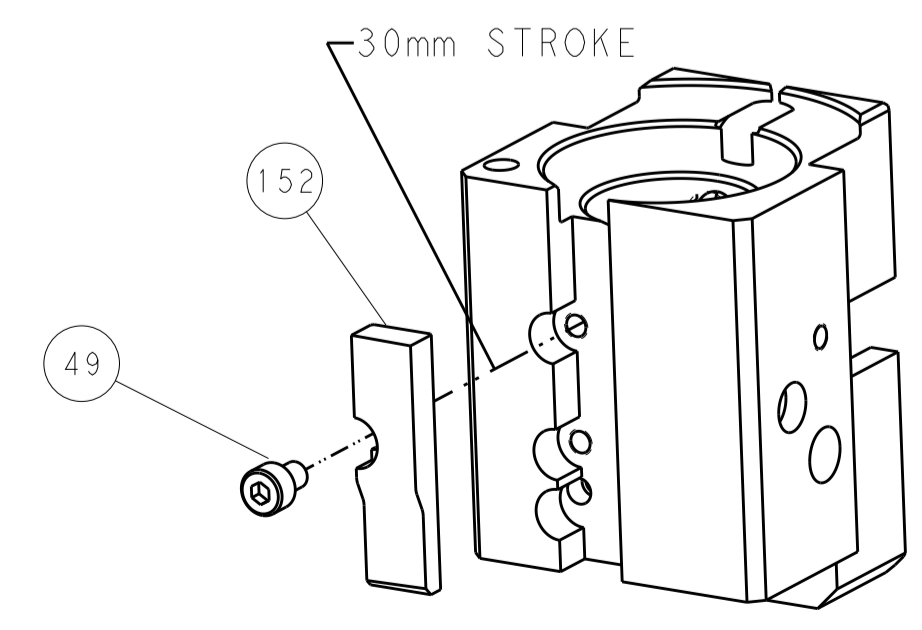


RAM SET-UP

FEED TYPE



CAM POSITIONS



AIR FEED

PACIFIC VERSION
 Shown on sheets 3 of 4 & 4 of 4
 (Atlantic version shown on sheets 1 of 4 & 2 of 4)

<small>THIS DRAWING IS UNPUBLISHED. RELEASED FOR PUBLICATION BY TYCO ELECTRONICS CORPORATION. ALL RIGHTS RESERVED.</small>		DWN: K. STAKEM 27SEPT2013 CHK: G. BAILEY 27SEPT2013 APVD: T. ERLIN 27SEPT2013	NAME: Ocean End Feed Applicator SIZE: A1 CAGE CODE: 00779 DRAWING NO: C=2150369	RESTRICTED TO: - SCALE: 1:1 SHEET: 4 OF 4 REV: C
DIMENSIONS: mm TOLERANCES UNLESS OTHERWISE SPECIFIED: 0 PLC ± 1 PLC ± 2 PLC ± 3 PLC ± 4 PLC ± ANGLES ±	FINISH: -	WEIGHT: - MATERIAL: -	PRODUCT SPEC: - APPLICATION SPEC: -	CUSTOMER ACCESSIBLE PRODUCTION DRAWING