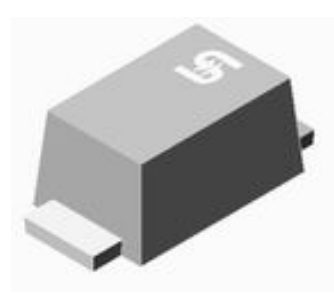


- Low profile package
- Low power loss, high efficiency
- Moisture sensitivity level: level 1, per J-STD-020
- Compliant to RoHS Directive 2011/65/EU and in accordance to WEEE 2002/96/EC
- Halogen-free according to IEC 61249-2-21 definition



Sub SMA

MECHANICAL DATA

Case: Sub SMA

Molding compound, UL flammability classification rating 94V-0

Base P/N with suffix "G" on packing code - green compound (halogen-free)

Base P/N with prefix "H" on packing code - AEC-Q101 qualified

Terminal: Matte tin plated leads, solderable per JESD22-B102

Meet JESD 201 class 1A whisker test

with prefix "H" on packing code meet JESD 201 class 2 whisker test

Polarity: Indicated by cathode band

Weight: 0.019 g (approximately)

MAXIMUM RATINGS AND ELECTRICAL CHARACTERISTICS (T_A=25°C unless otherwise noted)

| PARAMETER | SYMBOL | ES 1AL | ES 1BL | ES 1CL | ES 1DL | ES 1FL | ES 1GL | ES 1HL | |
|---|--------------------------------------|--------------|-----------|-----------|-----------|-----------|-----------|-----------|--|
| Marking code | | EAL | EBL | ECL | EDL | EFL | EGL | EHL | |
| Maximum repetitive peak reverse voltage | V _{RRM} | 50 | 100 | 150 | 200 | 300 | 400 | 500 | |
| Maximum RMS voltage | V _{RMS} | 35 | 70 | 105 | 140 | 210 | 280 | 350 | |
| Maximum DC blocking voltage | V _{DC} | 50 | 100 | 150 | 200 | 300 | 400 | 500 | |
| Maximum average forward rectified current | I _{F(AV)} | 1 | | | | | | | |
| Peak forward surge current, 8.3 ms single half sine-wave superimposed on rated load | I _{FSM} | 30 | | | | | | | |
| Maximum instantaneous forward voltage (Note 1) @ 1 A | V _F | 0.95 | | | | 1.3 | | | |
| Maximum reverse current @ rated VR T _J =25 °C T _J =125 °C | I _R | 5 100 | | | | | | | |
| Typical junction capacitance (Note 2) | C _j | 10 | | | | 8 | | | |
| Maximum reverse recovery time (Note 3) | T _{rr} | 35 | | | | | | | |
| Typical thermal resistance | R _{θJL} R _{θJA} | 35 85 | | | | | | | |
| Operating junction temperature range | T _J | - 55 to +150 | | | | | | | |
| Storage temperature range | T _{STG} | - 55 to +150 | | | | | | | |

Note 1: Pulse test with PW=300µs, 1% duty cycle

Note 2: Measured at 1 MHz and Applied VR=4.0 Volts.

Note 3: Reverse Recovery Test Conditions: I_F=0.5A, I_R=1.0A, I_{RR}=0.25A

Document Number: DS_D1405035

| | | | | | |
|-------------------|------------|----|------------|---------|---------------------|
| ES1xL (Note 1) | Prefix "H" | MT | Suffix "G" | Sub SMA | 7,500 / 13" Plasti |
| | | RQ | | Sub SMA | 10,000 / 13" Plasti |
| | | MQ | | Sub SMA | 10,000 / 13" Plasti |
| | | R3 | | Sub SMA | 1,800 / 7" Plastic |
| | | RF | | Sub SMA | 3,000 / 7" Plastic |
| | | R2 | | Sub SMA | 7,500 / 13" Paper |
| | | M2 | | Sub SMA | 7,500 / 13" Plasti |
| | | RH | | Sub SMA | 10,000 / 13" Paper |
| | | MH | | Sub SMA | 10,000 / 13" Plasti |

Note 1: "x" defines voltage from 50V (ES1AL) to 600V (ES1JL)

EXAMPLE

| PREFERRED P/N | PART NO. | AEC-Q101 QUALIFIED | PACKING CODE | GREEN COMPOUND CODE | DES |
|---------------|----------|--------------------|--------------|---------------------|-------|
| ES1JL RU | ES1JL | | RU | | |
| ES1JL RUG | ES1JL | | RU | G | Green |
| ES1JLHRU | ES1JL | H | RU | | AEC- |

RATINGS AND CHARACTERISTICS CURVES

(TA=25°C unless otherwise noted)

FIG. 1 FORWARD CURRENT DERATING CURVE

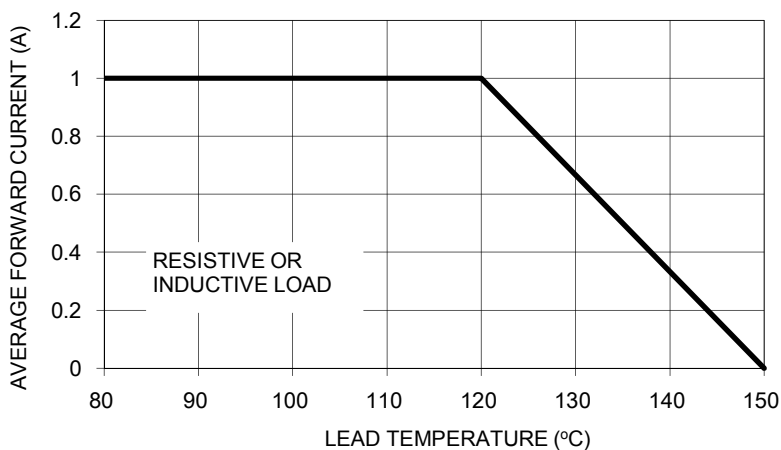


FIG. 2 TYPICAL FORWARD CHARACTERISTICS

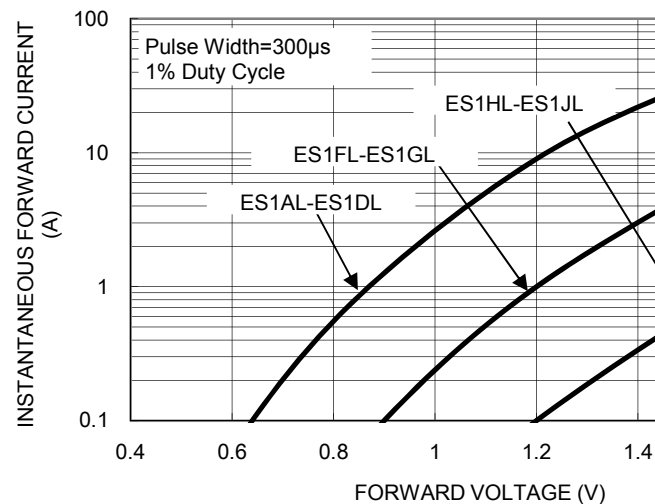


FIG. 3 MAXIMUM NON-REPETITIVE FORWARD SURGE CURRENT

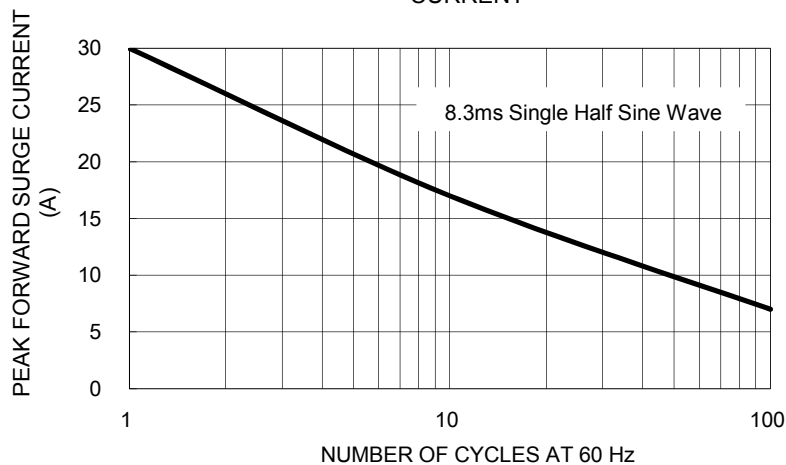
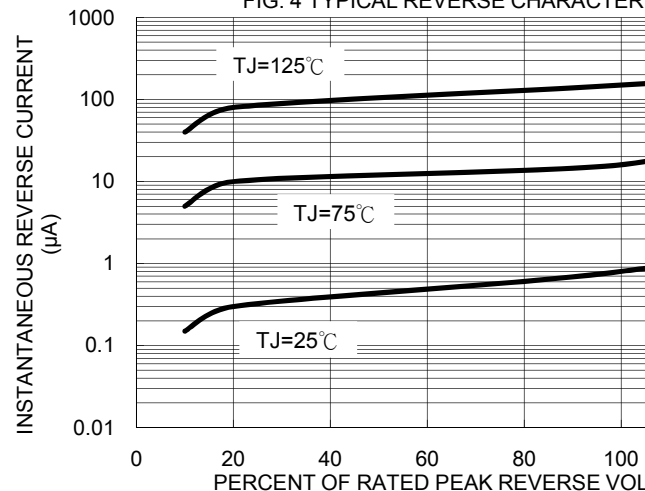
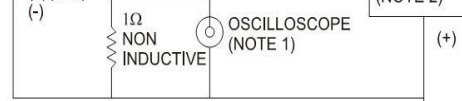
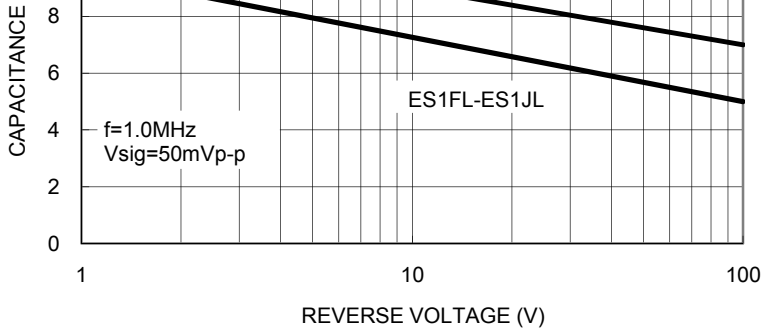


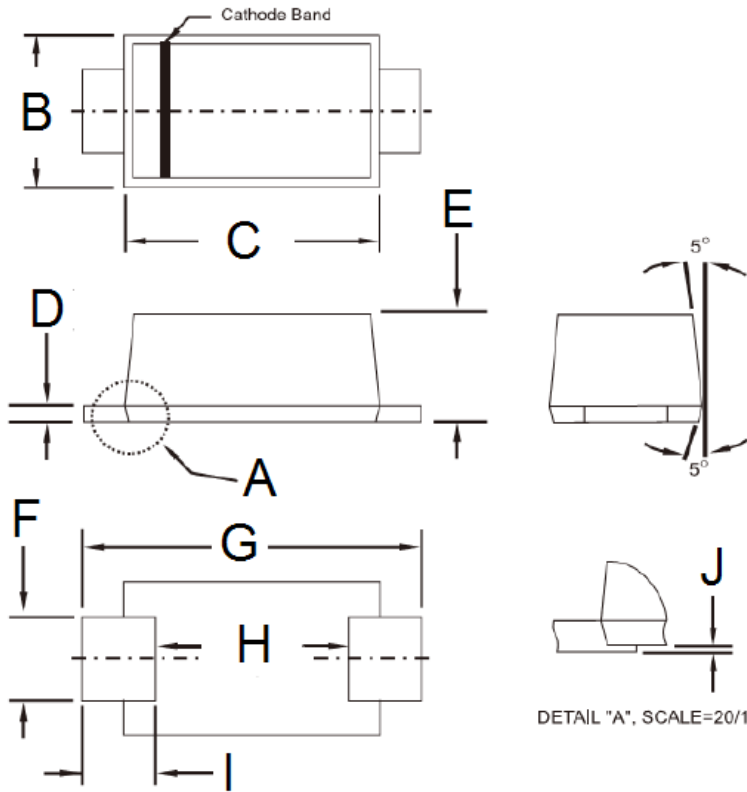
FIG. 4 TYPICAL REVERSE CHARACTERISTICS





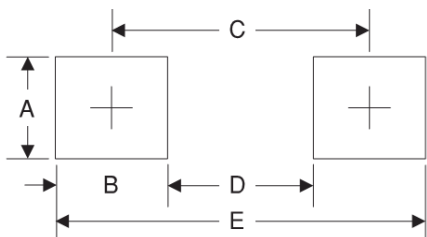
NOTES: 1. Rise Time=7ns max. Input Impedance= 1 megohm 22pf
2. Rise Time=10ns max. Source Impedance= 50 ohms

PACKAGE OUTLINE DIMENSIONS



| DIM. | Unit (mm) | | Unit (inch) | |
|------|-----------|------|-------------|-------|
| | Min | Max | Min | Max |
| B | 1.70 | 1.90 | 0.067 | 0.075 |
| C | 2.70 | 2.90 | 0.106 | 0.114 |
| D | 0.16 | 0.30 | 0.006 | 0.012 |
| E | 1.23 | 1.43 | 0.048 | 0.056 |
| F | 0.80 | 1.20 | 0.031 | 0.047 |
| G | 3.40 | 3.80 | 0.134 | 0.150 |
| H | 2.45 | 2.60 | 0.096 | 0.102 |
| I | 0.35 | 0.85 | 0.014 | 0.033 |
| J | 0.00 | 0.10 | 0.000 | 0.004 |

SUGGESTED PAD LAYOUT



| Symbol | Unit (mm) | Unit (inch) |
|--------|-----------|-------------|
| A | 1.4 | 0.055 |
| B | 1.2 | 0.047 |
| C | 3.1 | 0.122 |
| D | 1.9 | 0.075 |
| E | 4.3 | 0.169 |

MARKING DIAGRAM



- P/N = Marking Code
- G = Green Compound
- YW = Date Code
- F = Factory Code

Document Number: DS_D1405035

Notice

Specifications of the products displayed herein are subject to change without notice. TSC or anyone on its behalf assumes no responsibility or liability for any errors or inaccuracies.

Information contained herein is intended to provide a product description only. No license, express or implied, of any intellectual property rights is granted by this document. Except as provided in TSC's terms and conditions of sale for such products, TSC assumes no liability whatsoever, and disclaims any express or implied warranty relating to sale and/or use of TSC products including liability or warranties relating to fitness for a particular purpose, merchantability, or infringement of any patent, copyright, or other intellectual property right.

The products shown herein are not designed for use in medical, life-saving, or life-sustaining applications. Customers using or selling these products for use in such applications do so at their own risk and agree to indemnify TSC for any damages resulting from such improper use or sale.

Document Number: DS_D1405035