

IEC Appliance Inlet C14 with Filter, Fuseholder 1- or 2-pole, optional Voltage Selector (step switch)



Screw-on mounting from front side  
 Version with ground line choke  
 without voltage selector  
 Fuse drawer must be ordered separately (see accessories).



Snap-in mounting from front side  
 without voltage selector  
 Fuse drawer must be ordered separately (see accessories).



Screw-on mounting from rear side  
 without voltage selector  
 Flexible wire AWG18  
 Fuse drawer must be ordered separately (see accessories).



See below:  
[Approvals and Compliances](#)

**Description**

- Panel mount :  
 Screw-on version from front or rear side, snap-in version from front side
- 4 Functions :  
 Appliance Inlet Protection class I , Fuseholder for fuse-links 5 x 20 mm 1- or 2-pole , with or without voltage selector (step switch) , Line filter in standard and medical version
- V-Lock notch standard
- Quick connect terminals or wires

**Unique Selling Proposition**

- Reduces noise on the ground wire
- Interrupts ground loops
- High asymmetrical attenuation
- V-Lock cord retaining

**Characteristics**

- Rear side mounting for efficient cost-saving assembly
- Suitable for assembly in metal plated plastic housings
- All single elements are already wired
- Plug removal necessary for fuse-link replacement
- Suitable for use in medical equipment according to IEC/UL 60601-1
- For applications according to IEC/UL 62368-1 we recommend variants with bleed resistor

**Other versions on request**

- Capacity CX 100 nF

**References**

Alternative: version without line filter [KEA](#)

**Weblinks**

[pdf data sheet](#), [html datasheet](#), [General Product Information](#), [Approvals](#), [Distributor-Stock-Check](#), [Accessories](#), [Detailed request for product](#), [Microsite](#), [Landing Page](#)

**Technical Data**

|                                 |   |                                   |  |
|---------------------------------|---|-----------------------------------|--|
| Ratings IEC                     | 1 - 10A @ Ta 40 °C / 250 VAC; 50Hz  | Appliance inlet/-outlet           | C14 acc. to IEC 60320-1, UL 498, CSA C22.2 no. 42 (for cold conditions) pin-temperature 70 °C, 10A, Protection Class I |
| Ratings UL/CSA                  | 1 - 10A @ Ta 40 °C / 250 VAC; 60Hz  | Fuseholder                        | 1 or 2 pole, Shocksafe category PC2 acc. to IEC 60127-6, for fuse-links 5 x 20 mm                                      |
| Leakage Current                 | standard < 0.5 mA (250 V / 60Hz)<br>medical < 5 µA (250 V / 60 Hz)            | Rated Power Acceptance @ Ta 23 °C | 5 x 20: 2W (1 pole)/ 1.6W (2-pole) per pole  |
| Dielectric Strength             | > 1.7 kVDC between L-N<br>> 2.7 kVDC between L/N-PE<br>Test voltage (2 sec)   | Power Acceptance @ Ta > 23°C      | Admissible power acceptance at higher ambient temperature see derating curves  |
| Allowable Operation Temperature | -25 °C to 85 °C   | Voltage Selector                  | optional, step, 3 pos.   |
| Climatic Category               | 25/085/21 acc. to IEC 60068-1   | Line Filter                       | Standard and Medical Version, IEC 60939, UL 1283, CSA C22.2 no. 8 <a href="#">Technical Details</a>                    |
| IP-Protection                   | from front side IP40 acc. to IEC 60529  | MTBF                              | > 1'700'000 h acc. to MIL-HB-217 F   |
| Protection Class                | Suitable for appliances with protection class I acc. to IEC 61140             |                                   |  |
| Terminal                        | Quick connect terminals 6.3 x 0.8 mm<br>Flexible wire AWG18, 150 mm           |                                   |  |
| Panel Thickness S               | Screw: max 8 mm<br>Mounting screw torque max 0.5Nm<br>Snap-in: 0.8 mm to 3 mm |                                   |  |
| Material: Housing               | Thermoplastic, black, UL 94V-0  |                                   |  |

**Approvals and Compliances**




Detailed information on product approvals, code requirements, usage instructions and detailed test conditions can be looked up in [Details about Approvals](#)

SCHURTER products are designed for use in industrial environments. They have approvals from independent testing bodies according to national and international standards. Products with specific characteristics and requirements such as required in the automotive sector according to IATF 16949, medical technology according to ISO 13485 or in the aerospace industry can be offered exclusively with customer-specific, individual agreements by SCHURTER.

## Approvals









The approval mark is used by the testing authorities to certify compliance with the safety requirements placed on electronic products.

Approval Reference Type: KFA

| Approval Logo  | Certificates                  | Certification Body | Description                                       |
|--|-------------------------------|--------------------|---|
|  | <a href="#">VDE Approvals</a> | VDE                | Certificate Number: 40004665 (FKE, FKF, FKV, FKW) |
|  | <a href="#">UL Approvals</a>  | UL                 | UL File Number: E72928 (FKE, FKF, FKV, FKW)       |
|  | <a href="#">CQC Approvals</a> | CQC                | CQC Certificate Number: CQC18001206070            |




## Product standards

Product standards that are referenced

| Organization  | Design                | Standard         | Description   |
|---|-----------------------|------------------|---|
|   | Designed according to | IEC 60320-1      | Appliance couplers for household and similar general purposes         |
|   | Designed according to | IEC 60939        | Passive filters for suppressing electromagnetic interference          |
|   | Designed according to | IEC 60127-6      | Miniature fuses. Part 6. Fuse-holders for miniature fuse-links        |
|   | Designed according to | IEC 61058-1      | Switches for appliances. Part 1. General requirements                 |
|   | Designed according to | UL 498           | Standard for Attachment Plugs and Receptacles                         |
|   | Designed according to | UL 1283          | Electromagnetic interference filters                                  |
|   | Designed according to | CSA C22.2 no. 42 | General Use Receptacles, Attachment Plugs, and Similar Wiring Devices |
|  | Designed according to | CSA C22.2 no. 8  | Electromagnetic interference (EMI) filters                            |








## Application standards

Application standards where the product can be used

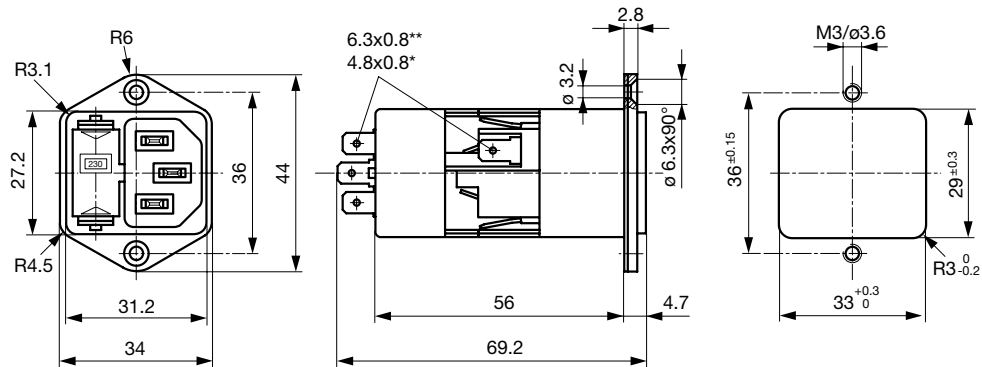
| Organization   | Design                         | Standard       | Description  |
|--|--------------------------------|----------------|--|
|  | Designed for applications acc. | IEC/UL 62368-1 | IEC 62368-1 includes the basic requirements for safety of audio, video, information technology and office equipment.   |
|  | Designed for applications acc. | IEC 60601-1    | Medical electrical equipment - Part 1: General requirements for basic safety and essential performance   |
|  | Designed for applications acc. | IEC 60335-1    | Safety of electrical appliances for household and similar purposes. Meets the requirements for appliances in unattended use. This includes the enhanced requirements of glow wire tests acc. to IEC 60695-2-11 or -12 & -13. |

## Compliances

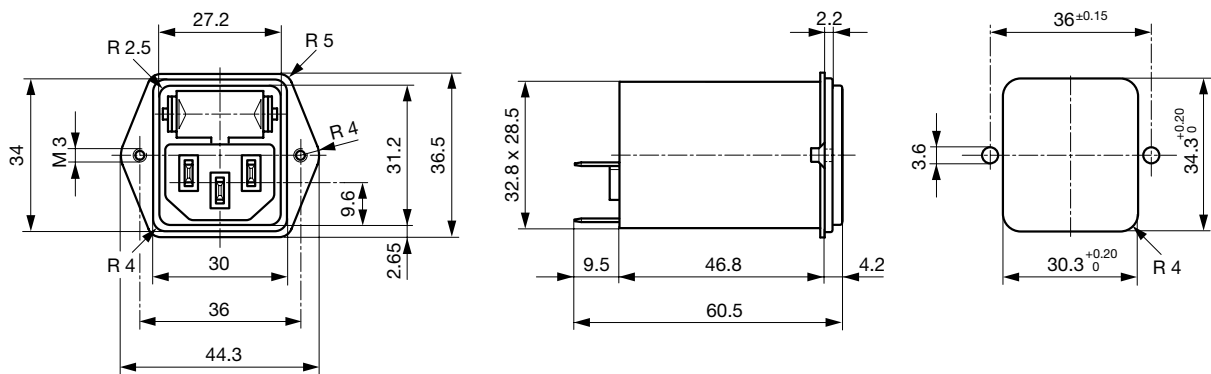
The product complies with following Guide Lines

| Identification   | Details                                      | Initiator   | Description  |
|--|--|-------------|--|
|  | <a href="#">CE declaration of conformity</a> | SCHURTER AG | The CE marking declares that the product complies with the applicable requirements laid down in the harmonisation of Community legislation on its affixing in accordance with EU Regulation 765/2008.                        |
|  | <a href="#">RoHS</a>                         | SCHURTER AG | Directive RoHS 2011/65/EU, Amendment (EU) 2015/863   |
|  | <a href="#">China RoHS</a>                   | SCHURTER AG | The law SJ / T 11363-2006 (China RoHS) has been in force since 1 March 2007. It is similar to the EU directive RoHS.   |
|  | <a href="#">REACH</a>                        | SCHURTER AG | On 1 June 2007, Regulation (EC) No 1907/2006 on the Registration, Evaluation, Authorization and Restriction of Chemicals 1 (abbreviated as "REACH") entered into force.  |
|  | <a href="#">Landing Page V-Lock</a>          | SCHURTER AG | V-Lock system are based on a matching plug-dose combination. The connector is equipped with a notch intended for use with the latching cordset. The cord latching system prevents against accidental removal of the cordset. |
|  | <a href="#">White Paper Glow wire test</a>   | SCHURTER AG | Meets the requirements of IEC 60335-1 for appliances in unattended use. This includes the enhanced requirements of glow wire tests acc. to IEC 60695-2-11 or -12 & -13.  |
|  | <a href="#">Medical Technology</a>           | SCHURTER AG | Suitable for use in medical equipment according to IEC/UL 60601-1  |

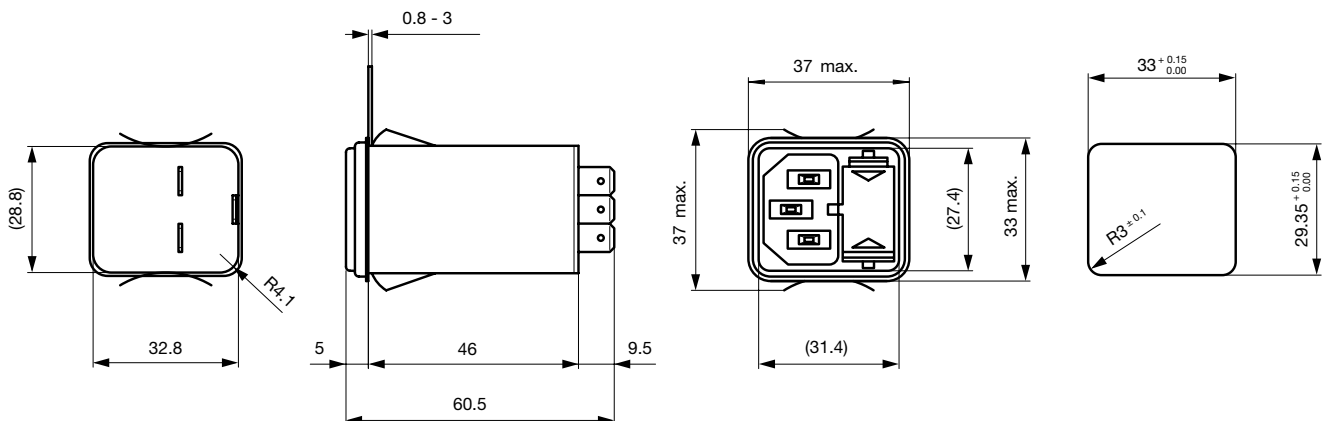
**Dimension [mm]**  
 Filter with voltage selector



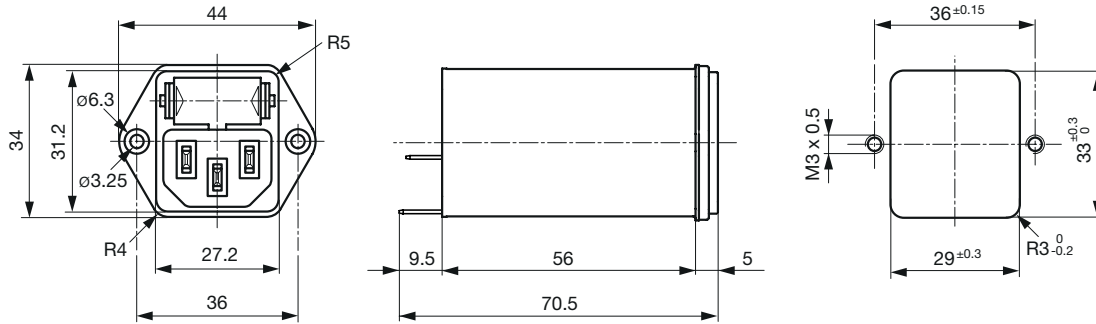
Screw-on mounting from rear side



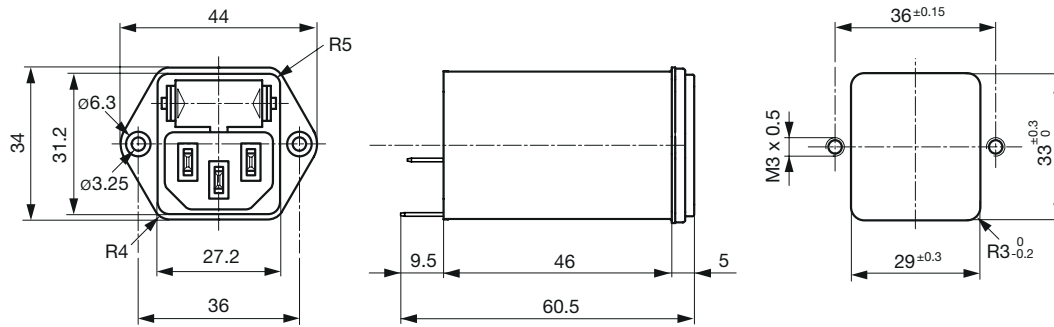
Snap-in mounting



Screw-on mounting from front side with ground line choke



Screw-on mounting from front side



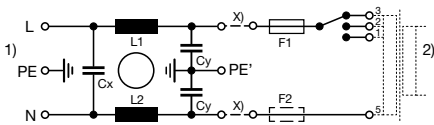
**Technical Data of Filter-Components**

| Rated Current [A] | Filter-Type                             | Inductance L1/<br>L2 [mH] | Inductance L3<br>[mH] | Capacitance CX<br>[nF] | Capacitance CY<br>[nF] | R [MΩ] |
|-------------------|---|---------------------------|-----------------------|------------------------|------------------------|--------|
| 1                 | Standard version                        | 2 x 10                    | -                     | 68                     | 2.2                    | -      |
| 2                 | Standard version                        | 2 x 4                     | -                     | 68                     | 2.2                    | -      |
| 4                 | Standard version                        | 2 x 1.5                   | -                     | 68                     | 2.2                    | -      |
| 6                 | Standard version                        | 2 x 0.8                   | -                     | 68                     | 2.2                    | -      |
| 10                | Standard version                        | 2 x 0.3                   | -                     | 68                     | 2.2                    | -      |
| 1                 | Standard Version with Ground Line Choke | 2 x 10                    | 0.6                   | 100                    | 2.2                    | -      |
| 2                 | Standard Version with Ground Line Choke | 2 x 4                     | 0.6                   | 100                    | 2.2                    | -      |
| 4                 | Standard Version with Ground Line Choke | 2 x 1.5                   | 0.6                   | 100                    | 2.2                    | -      |
| 6                 | Standard Version with Ground Line Choke | 2 x 0.8                   | 0.6                   | 100                    | 2.2                    | -      |
| 10                | Standard Version with Ground Line Choke | 2 x 0.3                   | 0.15                  | 100                    | 2.2                    | -      |
| 1                 | Medical Version (M5)                    | 2 x 10                    | -                     | 68                     | -                      | 1      |
| 2                 | Medical Version (M5)                    | 2 x 4                     | -                     | 68                     | -                      | 1      |
| 4                 | Medical Version (M5)                    | 2 x 1.5                   | -                     | 68                     | -                      | 1      |
| 6                 | Medical Version (M5)                    | 2 x 0.8                   | -                     | 68                     | -                      | 1      |
| 10                | Medical Version (M5)                    | 2 x 0.3                   | -                     | 68                     | -                      | 1      |
| 1                 | Medical Version (M80)                   | 2 x 10                    | -                     | 68                     | 0.47                   | 1      |
| 2                 | Medical Version (M80)                   | 2 x 4                     | -                     | 68                     | 0.47                   | 1      |
| 4                 | Medical Version (M80)                   | 2 x 1.5                   | -                     | 68                     | 0.47                   | 1      |
| 6                 | Medical Version (M80)                   | 2 x 0.8                   | -                     | 68                     | 0.47                   | 1      |

| Rated Current [A] | Filter-Type                                 | Inductance L1/<br>L2 [mH] | Inductance L3<br>[mH] | Capacitance CX<br>[nF] | Capacitance CY<br>[nF] | R [MΩ] |
|-------------------|---|---------------------------|-----------------------|------------------------|------------------------|--------|
| 10                | Medical Version (M80)                       | 2 x 0.3                   | -                     | 68                     | 0.47                   | 1      |
| 1                 | Medical Version (M5) with Ground Line Choke | 2 x 10                    | 0.6                   | 100                    | -                      | 1      |
| 2                 | Medical Version (M5) with Ground Line Choke | 2 x 4                     | 0.6                   | 100                    | -                      | 1      |
| 4                 | Medical Version (M5) with Ground Line Choke | 2 x 1.5                   | 0.6                   | 100                    | -                      | 1      |
| 6                 | Medical Version (M5) with Ground Line Choke | 2 x 0.8                   | 0.6                   | 100                    | -                      | 1      |
| 10                | Medical Version (M5) with Ground Line Choke | 2 x 0.3                   | 0.15                  | 100                    | -                      | 1      |

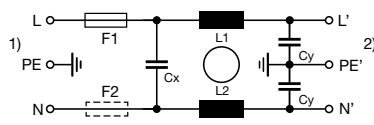
**Diagrams**

Standard version  
with voltage selector



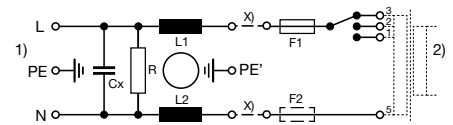
x) external connection to be made by the customer  
 1) Line  
 2) Load

Standard version  
without voltage selector



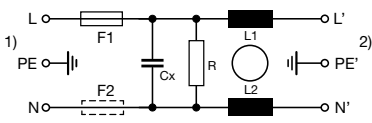
1) Line  
 2) Load

Medical Version (M5)  
with voltage selector



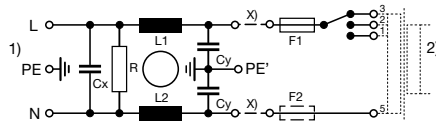
x) external connection to be made by the customer  
 1) Line  
 2) Load

Medical Version (M5)  
without voltage selector



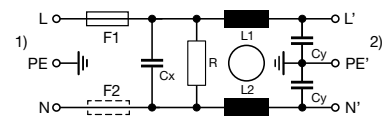
1) Line  
 2) Load

Medical Version (M80)  
with voltage selector



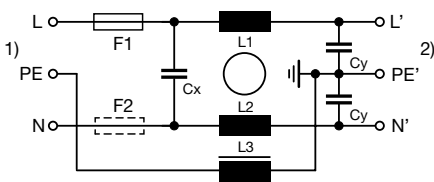
x) external connection to be made by the customer  
 1) Line  
 2) Load

Medical Version (M80)  
without voltage selector



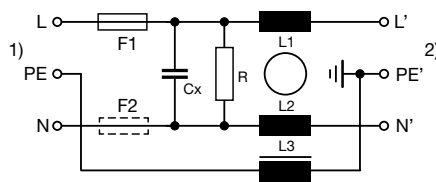
1) Line  
 2) Load

Standard version with ground line choke



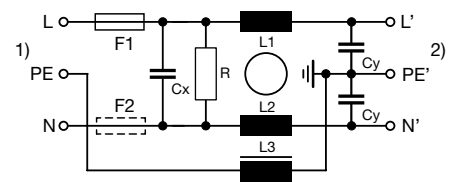
1) Line  
 2) Load

Medical Version (M5) with ground line choke



1) Line  
 2) Load

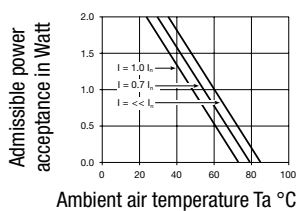
Medical Version (M80) with ground line choke



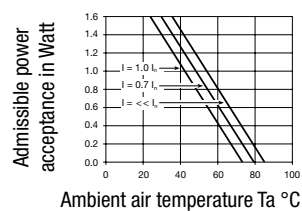
1) Line  
 2) Load

**Derating Curves**

1-pole



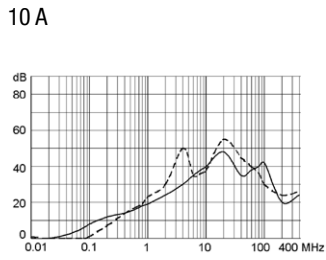
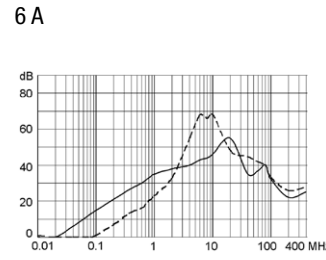
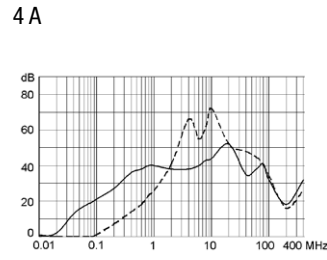
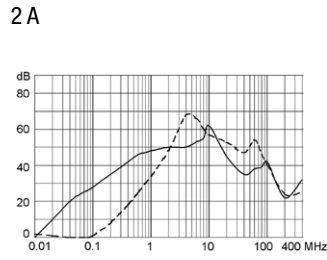
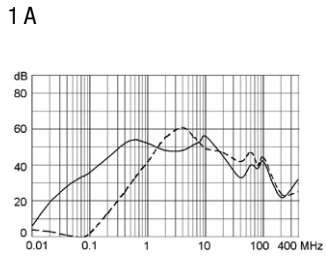
2-pole



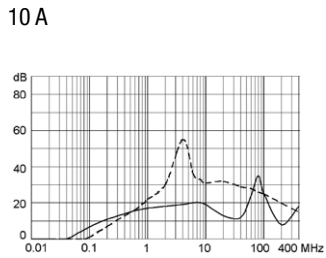
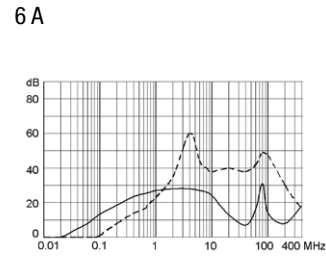
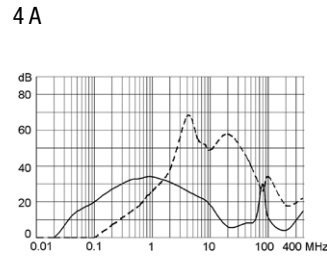
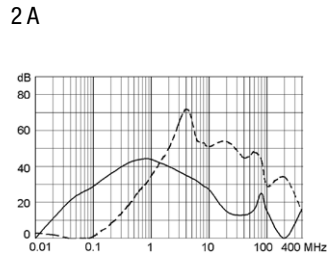
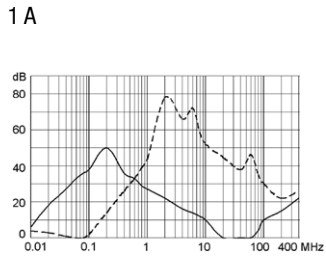
**Attenuation Loss**

--- 50Ω differential mode \_\_\_\_ 50Ω common mode

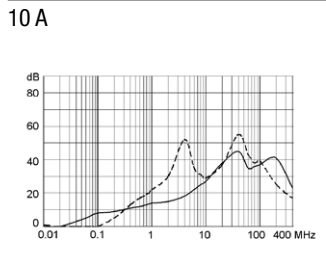
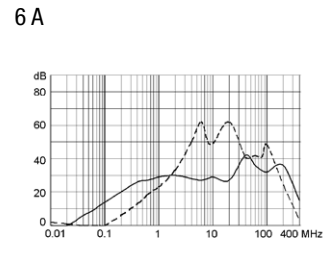
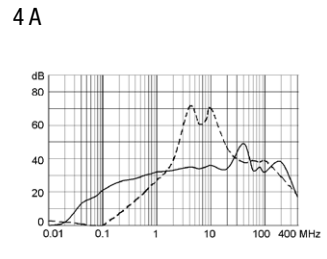
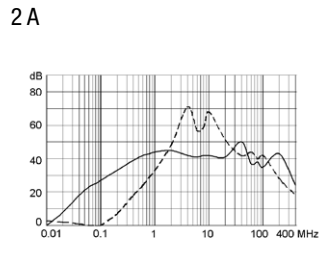
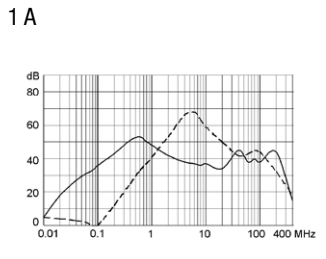
Standard version



Medical version (M5)

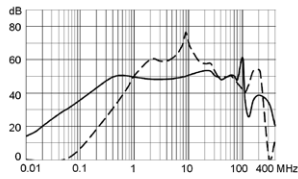


Medical version (M80)

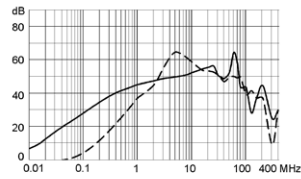


Standard with Earth Line Choke

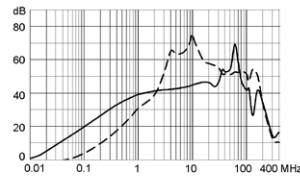
1 A



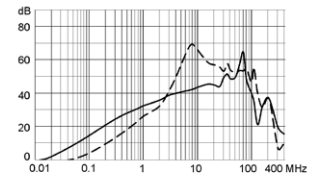
2 A



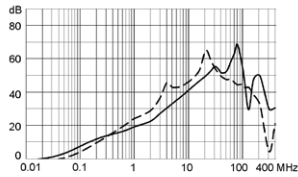
4 A



6 A

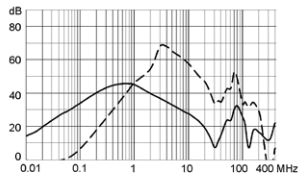


10 A

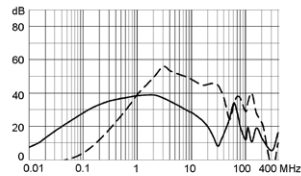


Medical (M5) with Earth Line Choke

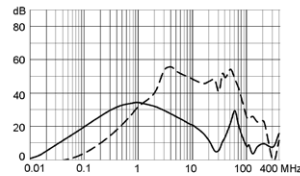
1 A



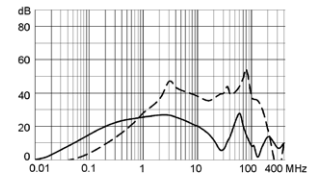
2 A



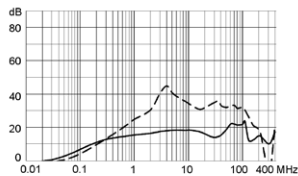
4 A



6 A



10 A



All Variants

| Rated Current [A] | Filter-Type      | Panel mounting | Mounting side | Fuseholder | Terminal                             | Voltage Selector | Order Number              |
|-------------------|------------------|----------------|---------------|------------|--------------------------------------|------------------|---------------------------|
| 1                 | Standard version | Snap-in        | Front Side    | 1-pole     | Quick connect terminals 6.3 x 0.8 mm | -                | <a href="#">4301.6011</a> |
| 1                 | Standard version | Snap-in        | Front Side    | 2-pole     | Quick connect terminals 6.3 x 0.8 mm | -                | <a href="#">4301.6001</a> |
| 2                 | Standard version | Snap-in        | Front Side    | 1-pole     | Quick connect terminals 6.3 x 0.8 mm | -                | <a href="#">4301.6012</a> |
| 2                 | Standard version | Snap-in        | Front Side    | 2-pole     | Quick connect terminals 6.3 x 0.8 mm | -                | <a href="#">4301.6002</a> |
| 4                 | Standard version | Snap-in        | Front Side    | 1-pole     | Quick connect terminals 6.3 x 0.8 mm | -                | <a href="#">4301.6013</a> |
| 4                 | Standard version | Snap-in        | Front Side    | 2-pole     | Quick connect terminals 6.3 x 0.8 mm | -                | <a href="#">4301.6003</a> |
| 6                 | Standard version | Snap-in        | Front Side    | 1-pole     | Quick connect terminals 6.3 x 0.8 mm | -                | <a href="#">4301.6014</a> |
| 6                 | Standard version | Snap-in        | Front Side    | 2-pole     | Quick connect terminals 6.3 x 0.8 mm | -                | <a href="#">4301.6004</a> |
| 10                | Standard version | Snap-in        | Front Side    | 1-pole     | Quick connect terminals 6.3 x 0.8 mm | -                | <a href="#">4301.6015</a> |

| Rated Current [A] | Filter-Type                             | Panel mounting | Mounting side | Fuseholder | Terminal                             | Voltage Selector | Order Number |
|-------------------|---|----------------|---------------|------------|--------------------------------------|------------------|--------------|
| 10                | Standard version                        | Snap-in        | Front Side    | 2-pole     | Quick connect terminals 6.3 x 0.8 mm | -                | 4301.6005    |
| 1                 | Standard version                        | Screw          | Front Side    | 1-pole     | Quick connect terminals 6.3 x 0.8 mm | -                | 4301.5011    |
| 1                 | Standard version                        | Screw          | Front Side    | 1-pole     | Quick connect terminals 6.3 x 0.8 mm | 3 pos.           | 4301.5051    |
| 1                 | Standard version                        | Screw          | Front Side    | 2-pole     | Quick connect terminals 6.3 x 0.8 mm | -                | 4301.5001    |
| 1                 | Standard version                        | Screw          | Front Side    | 2-pole     | Quick connect terminals 6.3 x 0.8 mm | 3 pos.           | 4301.5041    |
| 1                 | Standard version                        | Screw          | Rear Side     | 1-pole     | Flexible wire AWG18                  | -                | 4301.7311    |
| 1                 | Standard version                        | Screw          | Rear Side     | 2-pole     | Flexible wire AWG18                  | -                | 4301.7301    |
| 1                 | Standard version                        | Screw          | Rear Side     | 2-pole     | Quick connect terminals 6.3 x 0.8 mm | -                | 4301.7001    |
| 2                 | Standard version                        | Screw          | Front Side    | 1-pole     | Quick connect terminals 6.3 x 0.8 mm | -                | 4301.5012    |
| 2                 | Standard version                        | Screw          | Front Side    | 1-pole     | Quick connect terminals 6.3 x 0.8 mm | 3 pos.           | 4301.5052    |
| 2                 | Standard version                        | Screw          | Front Side    | 2-pole     | Quick connect terminals 6.3 x 0.8 mm | -                | 4301.5002    |
| 2                 | Standard version                        | Screw          | Front Side    | 2-pole     | Quick connect terminals 6.3 x 0.8 mm | 3 pos.           | 4301.5042    |
| 2                 | Standard version                        | Screw          | Rear Side     | 2-pole     | Quick connect terminals 6.3 x 0.8 mm | -                | 4301.7002    |
| 4                 | Standard version                        | Screw          | Front Side    | 1-pole     | Quick connect terminals 6.3 x 0.8 mm | -                | 4301.5013    |
| 4                 | Standard version                        | Screw          | Front Side    | 1-pole     | Quick connect terminals 6.3 x 0.8 mm | 3 pos.           | 4301.5053    |
| 4                 | Standard version                        | Screw          | Front Side    | 2-pole     | Quick connect terminals 6.3 x 0.8 mm | -                | 4301.5003    |
| 4                 | Standard version                        | Screw          | Front Side    | 2-pole     | Quick connect terminals 6.3 x 0.8 mm | 3 pos.           | 4301.5043    |
| 4                 | Standard version                        | Screw          | Rear Side     | 1-pole     | Quick connect terminals 6.3 x 0.8 mm | -                | 4301.7013    |
| 4                 | Standard version                        | Screw          | Rear Side     | 2-pole     | Quick connect terminals 6.3 x 0.8 mm | -                | 4301.7003    |
| 6                 | Standard version                        | Screw          | Front Side    | 1-pole     | Quick connect terminals 6.3 x 0.8 mm | -                | 4301.5014    |
| 6                 | Standard version                        | Screw          | Front Side    | 1-pole     | Quick connect terminals 6.3 x 0.8 mm | 3 pos.           | 4301.5054    |
| 6                 | Standard version                        | Screw          | Front Side    | 2-pole     | Quick connect terminals 6.3 x 0.8 mm | -                | 4301.5004    |
| 6                 | Standard version                        | Screw          | Front Side    | 2-pole     | Quick connect terminals 6.3 x 0.8 mm | 3 pos.           | 4301.5044    |
| 6                 | Standard version                        | Screw          | Rear Side     | 1-pole     | Quick connect terminals 6.3 x 0.8 mm | -                | 4301.7014    |
| 6                 | Standard version                        | Screw          | Rear Side     | 2-pole     | Quick connect terminals 6.3 x 0.8 mm | -                | 4301.7004    |
| 10                | Standard version                        | Screw          | Front Side    | 1-pole     | Quick connect terminals 6.3 x 0.8 mm | -                | 4301.5015    |
| 10                | Standard version                        | Screw          | Front Side    | 1-pole     | Quick connect terminals 6.3 x 0.8 mm | 3 pos.           | 4301.5055    |
| 10                | Standard version                        | Screw          | Front Side    | 2-pole     | Quick connect terminals 6.3 x 0.8 mm | -                | 4301.5005    |
| 10                | Standard version                        | Screw          | Front Side    | 2-pole     | Quick connect terminals 6.3 x 0.8 mm | 3 pos.           | 4301.5045    |
| 10                | Standard version                        | Screw          | Rear Side     | 1-pole     | Quick connect terminals 6.3 x 0.8 mm | -                | 4301.7015    |
| 10                | Standard version                        | Screw          | Rear Side     | 2-pole     | Quick connect terminals 6.3 x 0.8 mm | -                | 4301.7005    |
| 1                 | Standard Version with Ground Line Choke | Screw          | Front Side    | 2-pole     | Quick connect terminals 6.3 x 0.8 mm | -                | 4301.8050    |
| 2                 | Standard Version with Ground Line Choke | Screw          | Front Side    | 2-pole     | Quick connect terminals 6.3 x 0.8 mm | -                | 4301.8051    |
| 4                 | Standard Version with Ground Line Choke | Screw          | Front Side    | 2-pole     | Quick connect terminals 6.3 x 0.8 mm | -                | 4301.8052    |



| Rated Current [A] | Filter-Type                                 | Panel mounting | Mounting side | Fuseholder | Terminal                             | Voltage Selector | Order Number |
|-------------------|---|----------------|---------------|------------|--------------------------------------|------------------|--------------|
| 6                 | Standard Version with Ground Line Choke     | Screw          | Front Side    | 2-pole     | Quick connect terminals 6.3 x 0.8 mm | -                | 4301.8053    |
| 10                | Standard Version with Ground Line Choke     | Screw          | Front Side    | 2-pole     | Quick connect terminals 6.3 x 0.8 mm | -                | 4301.8054    |
| 1                 | Medical Version (M5)                        | Snap-in        | Front Side    | 2-pole     | Quick connect terminals 6.3 x 0.8 mm | -                | 4301.6201    |
| 2                 | Medical Version (M5)                        | Snap-in        | Front Side    | 2-pole     | Quick connect terminals 6.3 x 0.8 mm | -                | 4301.6203    |
| 4                 | Medical Version (M5)                        | Snap-in        | Front Side    | 2-pole     | Quick connect terminals 6.3 x 0.8 mm | -                | 4301.6205    |
| 6                 | Medical Version (M5)                        | Snap-in        | Front Side    | 2-pole     | Flexible wire AWG18                  | -                | 4301.6307    |
| 6                 | Medical Version (M5)                        | Snap-in        | Front Side    | 2-pole     | Quick connect terminals 6.3 x 0.8 mm | -                | 4301.6207    |
| 1                 | Medical Version (M5)                        | Screw          | Front Side    | 2-pole     | Quick connect terminals 6.3 x 0.8 mm | 3 pos.           | 4301.5241    |
| 1                 | Medical Version (M5)                        | Screw          | Rear Side     | 2-pole     | Quick connect terminals 6.3 x 0.8 mm | -                | 4301.7201    |
| 2                 | Medical Version (M5)                        | Screw          | Front Side    | 2-pole     | Quick connect terminals 6.3 x 0.8 mm | -                | 4301.5203    |
| 2                 | Medical Version (M5)                        | Screw          | Front Side    | 2-pole     | Quick connect terminals 6.3 x 0.8 mm | 3 pos.           | 4301.5243    |
| 2                 | Medical Version (M5)                        | Screw          | Rear Side     | 2-pole     | Quick connect terminals 6.3 x 0.8 mm | -                | 4301.7203    |
| 4                 | Medical Version (M5)                        | Screw          | Front Side    | 2-pole     | Quick connect terminals 6.3 x 0.8 mm | -                | 4301.5205    |
| 4                 | Medical Version (M5)                        | Screw          | Front Side    | 2-pole     | Quick connect terminals 6.3 x 0.8 mm | 3 pos.           | 4301.5245    |
| 4                 | Medical Version (M5)                        | Screw          | Rear Side     | 2-pole     | Quick connect terminals 6.3 x 0.8 mm | -                | 4301.7205    |
| 6                 | Medical Version (M5)                        | Screw          | Front Side    | 1-pole     | Quick connect terminals 6.3 x 0.8 mm | -                | 4301.5217    |
| 6                 | Medical Version (M5)                        | Screw          | Front Side    | 2-pole     | Quick connect terminals 6.3 x 0.8 mm | -                | 4301.5207    |
| 6                 | Medical Version (M5)                        | Screw          | Front Side    | 2-pole     | Quick connect terminals 6.3 x 0.8 mm | 3 pos.           | 4301.5247    |
| 6                 | Medical Version (M5)                        | Screw          | Rear Side     | 2-pole     | Quick connect terminals 6.3 x 0.8 mm | -                | 4301.7207    |
| 10                | Medical Version (M5)                        | Screw          | Front Side    | 2-pole     | Quick connect terminals 6.3 x 0.8 mm | -                | 4301.5209    |
| 10                | Medical Version (M5)                        | Screw          | Rear Side     | 2-pole     | Quick connect terminals 6.3 x 0.8 mm | -                | 4301.7209    |
| 4                 | Medical Version (M80)                       | Snap-in        | Front Side    | 2-pole     | Quick connect terminals 6.3 x 0.8 mm | -                | 4301.6206    |
| 1                 | Medical Version (M80)                       | Screw          | Rear Side     | 2-pole     | Quick connect terminals 6.3 x 0.8 mm | -                | 4301.7202    |
| 2                 | Medical Version (M80)                       | Screw          | Front Side    | 2-pole     | Quick connect terminals 6.3 x 0.8 mm | -                | 4301.5204    |
| 2                 | Medical Version (M80)                       | Screw          | Front Side    | 2-pole     | Quick connect terminals 6.3 x 0.8 mm | 3 pos.           | 4301.5244    |
| 2                 | Medical Version (M80)                       | Screw          | Rear Side     | 2-pole     | Quick connect terminals 6.3 x 0.8 mm | -                | 4301.7204    |
| 4                 | Medical Version (M80)                       | Screw          | Front Side    | 2-pole     | Quick connect terminals 6.3 x 0.8 mm | -                | 4301.5206    |
| 4                 | Medical Version (M80)                       | Screw          | Rear Side     | 2-pole     | Quick connect terminals 6.3 x 0.8 mm | -                | 4301.7206    |
| 6                 | Medical Version (M80)                       | Screw          | Front Side    | 2-pole     | Quick connect terminals 6.3 x 0.8 mm | -                | 4301.5208    |
| 6                 | Medical Version (M80)                       | Screw          | Rear Side     | 2-pole     | Quick connect terminals 6.3 x 0.8 mm | -                | 4301.7208    |
| 10                | Medical Version (M80)                       | Screw          | Front Side    | 2-pole     | Quick connect terminals 6.3 x 0.8 mm | -                | 4301.5200    |
| 10                | Medical Version (M80)                       | Screw          | Rear Side     | 2-pole     | Quick connect terminals 6.3 x 0.8 mm | -                | 4301.7200    |
| 1                 | Medical Version (M5) with Ground Line Choke | Screw          | Front Side    | 2-pole     | Quick connect terminals 6.3 x 0.8 mm | -                | 4301.8055    |

| Rated Current [A] | Filter-Type                                 | Panel mounting | Mounting side | Fuseholder | Terminal                             | Voltage Selector | Order Number |
|-------------------|---|----------------|---------------|------------|--------------------------------------|------------------|--------------|
| 2                 | Medical Version (M5) with Ground Line Choke | Screw          | Front Side    | 2-pole     | Quick connect terminals 6.3 x 0.8 mm | -                | 4301.8056    |
| 4                 | Medical Version (M5) with Ground Line Choke | Screw          | Front Side    | 2-pole     | Quick connect terminals 6.3 x 0.8 mm | -                | 4301.8057    |
| 6                 | Medical Version (M5) with Ground Line Choke | Screw          | Front Side    | 2-pole     | Quick connect terminals 6.3 x 0.8 mm | -                | 4301.8058    |
| 10                | Medical Version (M5) with Ground Line Choke | Screw          | Front Side    | 2-pole     | Quick connect terminals 6.3 x 0.8 mm | -                | 4301.8059    |

Most Popular.

Availability for all products can be searched real-time: <https://www.schurter.com/en/Stock-Check/Stock-Check-SCHURTER>

Wire length: 150 mm

**Packaging unit** 10 Pcs

**Required Accessory**

**Description**



**Fusedrawer 2**

Fusedrawer für Fuse Links 5x20 mm, with or without Voltage Selector Insert

|   |              |
|---|--------------|
| Fingergrip-Safe, 2-pole                             | 3-104-672    |
| Fingergrip, 2-pole, Voltage Selector, 110, 150, 220 | 4301.1014.01 |
| Fingergrip, 2-pole, Voltage Selector, 120, 240      | 4301.1014.02 |
| Fingergrip, 2-pole, Voltage Selector, 110, 220      | 4301.1014.03 |

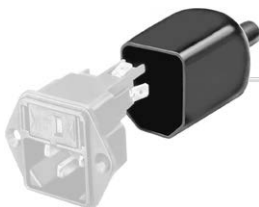
...

**Accessories**



**Wire Harness**

Wire harness for SCHURTER products



**Assorted Covers**

Rear Cover

0859.0072



**Cord retaining kits**

Cord retaining strain relief

|                |           |
|----------------|-----------|
| Flat head, A   | 4700.0001 |
| Countersunk, B | 4700.0002 |

## Mating Outlets/Connectors

### Category / Description

[Appliance Outlet Overview complete](#)



|   |      |
|---|------|
| 4787, Mounting: Screw-on mounting, Appliance Outlet: IEC Solder terminals, 10 A, Suitable for appliances with protection class I                          | 4787 |
| 4788, Mounting: Snap-in version, Appliance Outlet: IEC Solder terminals or quick connect terminals, 10 A, Suitable for appliances with protection class I | 4788 |
| IEC Appliance Outlet F or H, Screw-on Mounting, Front Side, Solder, PCB or Quick-connect Terminal   | 5091 |

[Appliance Outlet further types to KFA](#)

[Connector Overview complete](#)



|   |         |
|---|---------|
| 4782 Mounting: Power Cord, 3 x 1 mm <sup>2</sup> / 3 x 18 AWG, Cable, Connector: IEC C13    | 4782    |
| 4785 Mounting: Power Cord, 3 x 1 mm <sup>2</sup> / 3 x 18 AWG, Cable, Connector: IEC C13    | 4785    |
| 4012 Mounting: Power Supply Cord, 3 x 1 mm <sup>2</sup> , Screw clamps, Connector: IEC C13  | 4012    |
| 4300-06 Mounting: Power Cord, 3 x 1 mm <sup>2</sup> / 3 x 18 AWG, Cable, Connector: IEC C13 | 4300-06 |
| 4781 Mounting: Power Cord, 3 x 1 mm <sup>2</sup> / 3 x 18 AWG, Cable, Connector: IEC C15    | 4781    |

[Connector further types to KFA](#)

...

## Mating Outlets/Connectors shuttered



[Connector Overview complete](#)

|  |      |
|--|------|
| 4783 Mounting: Power Cord, 3 x 1 mm <sup>2</sup> / 3 x 18 AWG, Cable, Connector: IEC C13 | 4783 |
|--|------|

[Connector further types to KFA](#)



[Power Cord Overview complete](#)

|   |         |
|---|---------|
| VAC13KS, Overview, V-Lock cord retaining, diverse Connector IEC C13, diverse, black | VAC13KS |
|---|---------|

[Power Cord further types to KFA](#)