

**EDGE  
RATE**  
CONTACT

(0.80 mm) .0315"

HSEC8-16-01-L-DP-A

HSEC8-08-01-L-DP-A

HSEC8-32-01-L-DP-A-WT

**HSEC8-DP SERIES**

# DIFFERENTIAL PAIR EDGE CARD SOCKET

## SPECIFICATIONS

For complete specifications and recommended PCB layouts see [www.samtec.com?HSEC8-DP](http://www.samtec.com?HSEC8-DP)

**Insulator Material:**

Black Liquid Crystal Polymer

**Contact:**

Copper Alloy

**Plating:**

Au or Sn over

50  $\mu$ " (1.27  $\mu$ m) Ni
**Operating Temp:**

Testing Now!

**RoHS Compliant:**

Yes

## PROCESSING

**Lead-Free Solderable:**

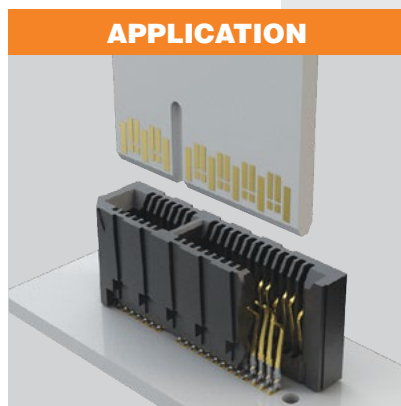
Yes

**SMT Lead Coplanarity:**

(0.10 mm) .004" max

**Card Mates:**  
(1.60 mm) .062" thick card

## APPLICATION


*High-Speed  
Edge Rate®  
Contacts*
*Designed for  
high-speed  
differential pair  
applications*

## HIGH-SPEED CHANNEL PERFORMANCE

HSEC8-DP

Rating based on Samtec  
reference channel.  
For full SI performance data  
visit [Samtec.com](http://Samtec.com) or contact  
SIG@samtec.com

PAM4

**56**  
Gbps

*Optional  
weld tab  
available*

HSEC8

NO. OF  
PAIRS

01

PLATING  
OPTION

DP

A

OPTION

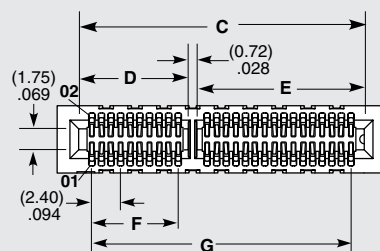
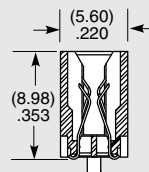
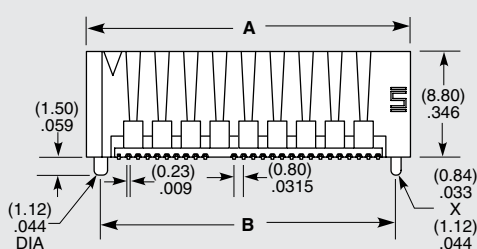
**-08, -12, -16, -20, -32, -56**  
(Total Pairs)

**-L**  
= 10  $\mu$ " (0.25  $\mu$ m) Gold on contact,  
Matte Tin on tail

**-WT**  
=Weld Tab

## ALSO AVAILABLE (MOQ Required)

- Other platings
  - Other pin counts
- Contact Samtec.



HSEC8-16-01-L-DP-A SHOWN

NO. OF PAIRS	A	B	C	D	E	F	G
-08	(17.40) .685	(15.00) .591	(14.20) .559	(4.34) .171	(9.14) .360	(2.40) .094	(12.00) .472
-12	(22.20) .874	(19.80) .780	(19.00) .748	(6.74) .265	(11.54) .454	(4.80) .189	(16.80) .661
-16	(27.00) 1.063	(24.60) .969	(23.80) .937	(9.14) .360	(13.94) .549	(7.20) .283	(21.60) .850
-20	(31.80) 1.252	(29.40) 1.157	(28.60) 1.126	(11.54) .454	(16.34) .643	(9.60) .378	(26.40) 1.039
-32	(46.20) 1.819	(43.80) 1.724	(43.00) 1.693	(18.74) .738	(23.54) .927	(16.80) .661	(40.80) 1.606
-56	(75.00) 2.953	(72.60) 2.858	(71.80) 2.827	(33.14) 1.305	(37.94) 1.494	(31.20) 1.228	(69.60) 2.740

**Notes:**

Tape & Reel packaging  
and K-Dot are standard.

Some sizes, styles and  
options are non-standard,  
non-returnable.

Due to technical progress, all designs, specifications and components are subject to change without notice.

[WWW.SAMTEC.COM](http://WWW.SAMTEC.COM)

All parts within this catalog are built to Samtec's specifications.

Customer specific requirements must be approved by Samtec and identified in a Samtec customer-specific drawing to apply.