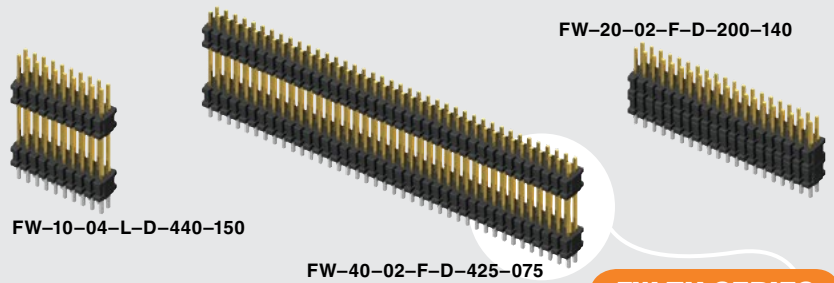


# FLEX STACK



(1.27 mm) .050"

FW-TH SERIES

# THROUGH-HOLE MICRO BOARD STACKER

## SPECIFICATIONS

For complete specifications see [www.samtec.com?FW-TH](http://www.samtec.com?FW-TH)

**Insulator Material:** Black Liquid Crystal Polymer  
**Terminal Material:** Phosphor Bronze  
**Plating:** Sn or Au over 50 μm (1.27 μm) Ni  
**Operating Temp Range:** -55 °C to +125 °C  
**RoHS Compliant:** Yes

## PROCESSING

**Lead-Free Solderable:** Yes

## RECOGNITIONS

For complete scope of recognitions see [www.samtec.com/quality](http://www.samtec.com/quality)



**Board Mates:** CLP, FLE

**Cable Mates:** FFSD

Low-profile or skyscraper styles

(1.27 mm) .050" pitch

Variable board spacing

FW	NO. PINS PER ROW	LEAD STYLE	PLATING OPTION	D	STACKER HEIGHT	POST HEIGHT	OPTION
----	------------------	------------	----------------	---	----------------	-------------	--------

02 thru 50

Specify LEAD STYLE from chart

**-F**  
= Gold flash on post, Matte Tin on tail

**-L**  
= 10 μm (0.25 μm) Gold on post, Matte Tin on tail

**-G**  
= 10 μm (0.25 μm) Gold on post, Gold flash on tail

**-"XXX"**  
= Stacker Height (in inches)

Example:  
-250 = (6.35 mm) .250"

LEAD STYLE	TAIL (B)
-01	(1.14) .045
-02	(1.91) .075
-04	(2.29) .090

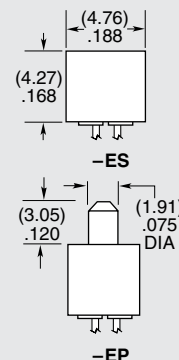
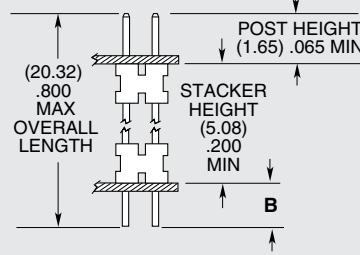
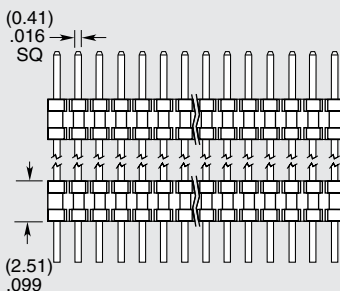
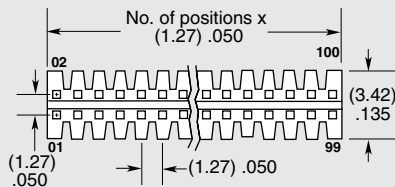
**-"XXX"**  
= Post Height (in inches)

(1.65 mm) .065" minimum

Example:  
-065 = (1.65 mm) .065"

**-ES**  
= End Shroud (-075 post height only. Mates only with CLP.) (5.46 mm) .215" to (15.49 mm) .610" stacker height only, 9 pins/row minimum

**-EP**  
= End Shroud with Guide Post (-075 post height only. Mates only with CLP.) (5.46 mm) .215" to (15.49 mm) .610" stacker height only, 9 pins/row minimum



## ALSO AVAILABLE (MOQ Required)

- Smaller stack heights
- Contact Samtec.

**Note:** For added mechanical stability, Samtec recommends mechanical board spacers be used in applications with gold or selective gold plated connectors. Contact [ipg@samtec.com](mailto:ipg@samtec.com) for more information.

**Note:** This Series is non-standard, non-returnable.

Due to technical progress, all designs, specifications and components are subject to change without notice.

[WWW.SAMTEC.COM](http://WWW.SAMTEC.COM)

All parts within this catalog are built to Samtec's specifications. Customer specific requirements must be approved by Samtec and identified in a Samtec customer-specific drawing to apply.