

DCB010

Very High-Speed Switching Diode



ON Semiconductor®

www.onsemi.com

Features

- Ideally suited for use in hybrid ICs because of very small-sized package
- Fast switching speed
- Small interterminal capacitance

SPECIFICATIONS

ABSOLUTE MAXIMUM RATINGS at Ta = 25°C (Note 1)

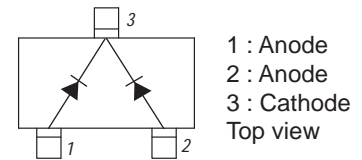
Parameter	Symbol	Value	Unit
Peak Reverse Voltage	V _{RM}	85	V
Reverse Voltage	V _R	80	V
Peak Forward Current	I _{FM}	300	mA
	I _{FM} (Note 2)	450	mA
Average Rectified Current	I _O	100	mA
	I _O (Note 2)	150	mA
Surge Current (1μs)	I _{FSM}	4	A
	I _{FSM} (Note 2)	6	A
Allowable Power Dissipation	P	200	mW
Junction Temperature	T _j	125	°C
Storage Temperature	T _{stg}	-55 to +125	°C

Note 1 : Stresses exceeding those listed in the Maximum Ratings table may damage the device. If any of these limits are exceeded, device functionality should not be assumed, damage may occur and reliability may be affected.

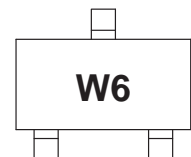
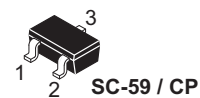
Note 2 : Total value

Silicon Epitaxial Planar Type
(Cathode Common)
100mA, 85V

ELECTRICAL CONNECTION



MARKING



ORDERING INFORMATION

See detailed ordering and shipping information on page 4 of this data sheet

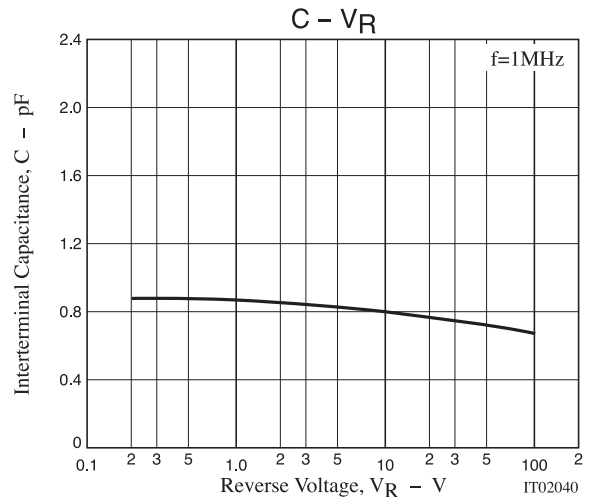
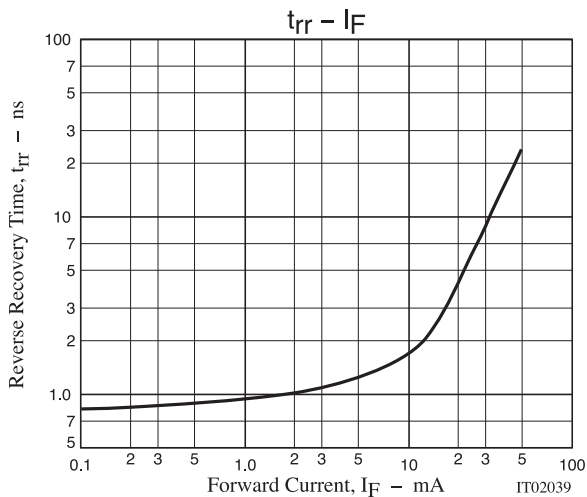
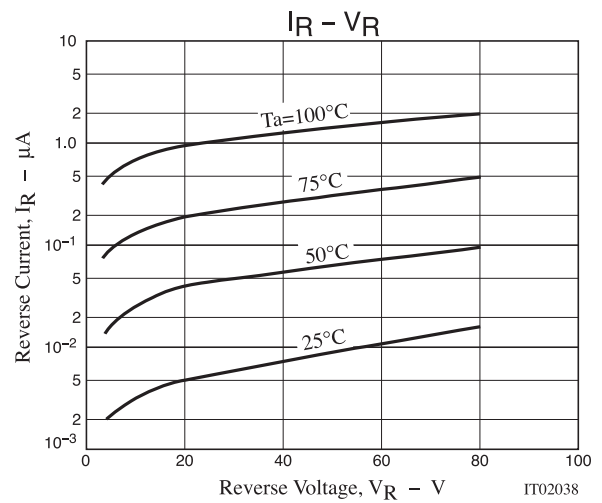
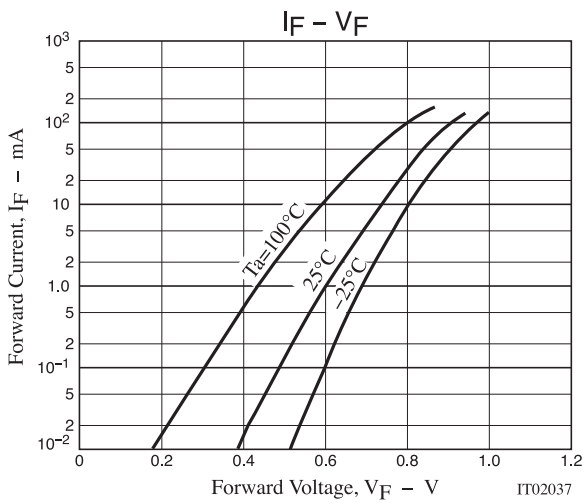
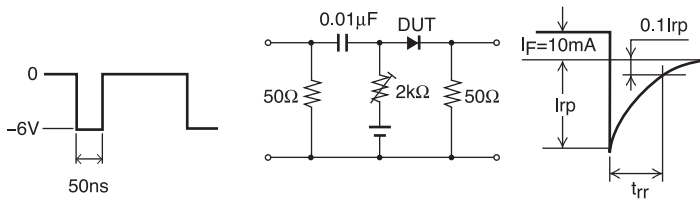
DCB010

ELECTRICAL CHARACTERISTICS at Ta = 25°C (Note 3)

Parameter	Symbol	Conditions	Value			Unit
			min	typ	max	
Forward Voltage	V _{F1}	I _F = 1mA		0.6		V
	V _{F2}	I _F = 10mA		0.72		V
	V _{F3}	I _F = 100mA			1.2	V
Reverse Current	I _{R1}	V _R = 30V			0.1	μA
	I _{R2}	V _R = 80V			0.5	μA
Interterminal Capacitance	C	V _R = 0V, f = 1MHz			3.0	pF
Reverse Recovery Time	t _{rr}	I _F = 10mA, V _R = 6V, R _L = 50Ω, I _{rr} = 0.1I _{rp}			4.0	ns

Note 3 : Product parametric performance is indicated in the Electrical Characteristics for the listed test conditions, unless otherwise noted. Product performance may not be indicated by the Electrical Characteristics if operated under different conditions.

Revers Recovery Time Circuit

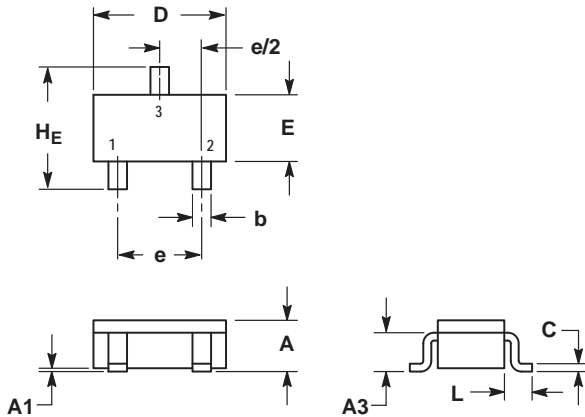


DCB010

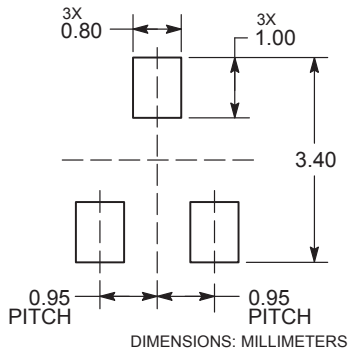
PACKAGE DIMENSIONS

unit : mm

SC-59 / CP
CASE 318AN
ISSUE A



RECOMMENDED SOLDERING FOOTPRINT*



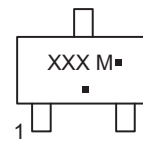
*For additional information on our Pb-Free strategy and soldering details, please download the ON Semiconductor Soldering and Mounting Techniques Reference Manual, SOLDERRM/D.

NOTES:

1. DIMENSIONING AND TOLERANCING PER ANSI Y14.5M, 1982.
2. CONTROLLING DIMENSION: MILLIMETERS.

DIM	MILLIMETERS	
	MIN	MAX
A	0.90	1.30
A1	0.00	0.10
A3	0.80	REF
b	0.35	0.50
c	0.10	0.26
D	2.70	3.10
E	1.30	1.70
e	1.70	2.10
HE	2.20	3.00
L	0.35	0.75

GENERIC MARKING DIAGRAM



- XXX = Specific Device Code
- M = Date Code
- = Pb-Free Package*

(*Note: Microdot may be in either location)

*This information is generic. Please refer to device data sheet for actual part marking. Pb-Free indicator, "G" or microdot "■", may or may not be present.

DCB010

ORDERING INFORMATION

Device	Marking	Package	Shipping
DCB010-TB-E	W6	SC-59 / CP (Pb-Free)	3,000 / Tape & Reel

† For information on tape and reel specifications, including part orientation and tape sizes, please refer to our Tape and Reel Packaging Specifications Brochure, BRD8011/D. http://www.onsemi.com/pub_link/Collateral/BRD8011-D.PDF

ON Semiconductor and the ON logo are registered trademarks of Semiconductor Components Industries, LLC (SCILLC) or its subsidiaries in the United States and/or other countries. SCILLC owns the rights to a number of patents, trademarks, copyrights, trade secrets, and other intellectual property. A listing of SCILLC's product/patent coverage may be accessed at www.onsemi.com/site/pdf/Patent-Marking.pdf. SCILLC reserves the right to make changes without further notice to any products herein. SCILLC makes no warranty, representation or guarantee regarding the suitability of its products for any particular purpose, nor does SCILLC assume any liability arising out of the application or use of any product or circuit, and specifically disclaims any and all liability, including without limitation special, consequential or incidental damages. "Typical" parameters which may be provided in SCILLC data sheets and/or specifications can and do vary in different applications and actual performance may vary over time. All operating parameters, including "Typicals" must be validated for each customer application by customer's technical experts. SCILLC does not convey any license under its patent rights nor the rights of others. SCILLC products are not designed, intended, or authorized for use as components in systems intended for surgical implant into the body, or other applications intended to support or sustain life, or for any other application in which the failure of the SCILLC product could create a situation where personal injury or death may occur. Should Buyer purchase or use SCILLC products for any such unintended or unauthorized application, Buyer shall indemnify and hold SCILLC and its officers, employees, subsidiaries, affiliates, and distributors harmless against all claims, costs, damages, and expenses, and reasonable attorney fees arising out of, directly or indirectly, any claim of personal injury or death associated with such unintended or unauthorized use, even if such claim alleges that SCILLC was negligent regarding the design or manufacture of the part. SCILLC is an Equal Opportunity/Affirmative Action Employer. This literature is subject to all applicable copyright laws and is not for resale in any manner.