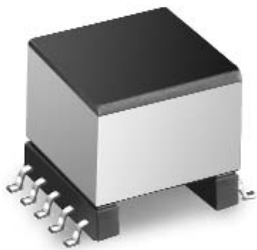





SHDSL/HDSL2/HDSL4 LINE TRANSFORMER

For Use with GlobespanVirata Chipset



-  Matched to GlobespanVirata Orion Chipset
-  Excellent THD performance
-  Designed to meet UL 60950, IEC 60950, and GR1089 for supplementary insulation requirements for working voltages up to 250 Vrms

Electrical Specifications @ 25°C — Operating Temperature -40°C to +85°C

Part Number	Turns Ratio Chip-Line (± 2%)	Inductance Line Side (1-5) with (2-4) shorted	Leakage Inductance (1-5) with (2-4) & (9-7) shorted	Isolation Voltage	
				(1-5) to (9-7)	(1-5)
B1074B	1:5.4	3.00 mH ±6%	15 µH MAX	1500 Vrms MIN	600 Vrms MIN

Additional Electrical Specifications

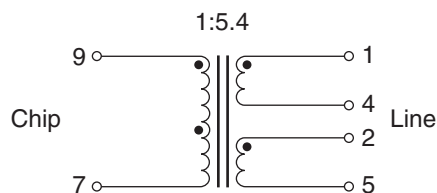
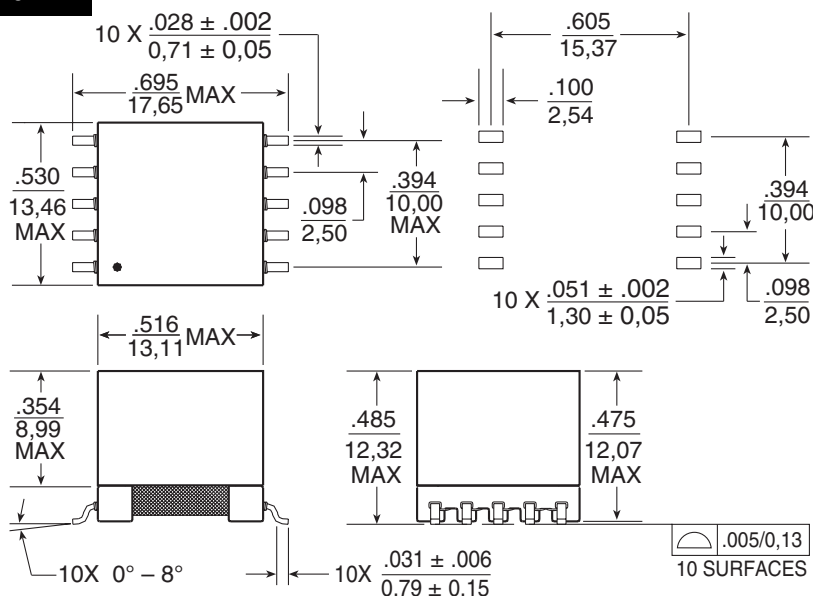
Part Number	DCR Line Side (1-5) with (2-4) shorted	DCR Chip Side (9-7)	Return Loss 135 Ω Line Side (40-500 kHz)	Longitudinal Balance (20-500 kHz)	THD (4 Vrms @ 5 kHz)
B1074B	4.2 Ω (MAX)	.35 Ω (MAX)	15 dB MIN	55 dB MIN	-79 dB MAX

NOTE: Transformers are shipped in trays, unless Tape & Reel packaging is specified by adding the suffix "T" to the part number (ex: B1074BT).

Mechanical

Schematic

B1074B



Weight62 grams

Tray60/tray

Dimensions: $\frac{\text{Inches}}{\text{mm}}$
 Unless otherwise specified,
 all tolerances are $\pm \frac{.010}{0,25}$

For More Information :

UNITED STATES (Worldwide)	UNITED KINGDOM (Northern Europe)	FRANCE (Southern Europe)	SINGAPORE (Southern Asia)	TAIWAN, R.O.C. (Northern Asia)	HONG KONG (China/Hong Kong)	DISTRIBUTOR
12220 World Trade Drive San Diego, CA 92128 U.S.A. http://www.pulseeng.com TEL: 858 674 8100 FAX: 858 674 8262	1 & 2 Huxley Road The Surrey Research Park Guildford, Surrey GU2 5RE United Kingdom TEL: 44 1483 401700 FAX: 44 1483 401701	Zone Industrielle F-39270 Orgelet France TEL: 33 3 84 35 04 04 FAX: 33 3 84 25 46 41	150 Kampong Ampat #07-01/02 KA Centre Singapore 368324 TEL: 65 6287 8998 FAX: 65 6280 0080	3F-4, No. 81, Sec. 1 HsinTai Wu Road Hsi-Chih, Taipei Hsien Taiwan, R.O.C. Tel: 886 2 2698 0228 FAX: 886 2 2698 0948	9/F, Phase 2, Tai Sang Shatin Warehouse Centre 6 Wong Chuk Yeung Street Fotan, Shatin, Hong Kong TEL: 852 2788 6588 FAX: 852 2776 1055	

Performance warranty of products offered on this data sheet is limited to the parameters specified. Data is subject to change without notice. Other brand and product names mentioned herein may be trademarks or registered trademarks of their respective owners.

©2004, Pulse Engineering, Inc. All Rights Reserved.

B803.A (6/04)