

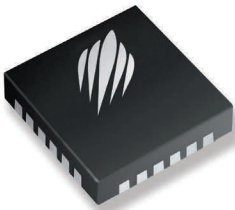
**Product Description**

The PE43503 is a HaRP™-enhanced, high linearity, 5-bit RF Digital Step Attenuator (DSA) covering a 31 dB attenuation range in 1 dB steps. The Peregrine 50Ω RF DSA provides a serial CMOS control interface. It maintains high attenuation accuracy over frequency and temperature and exhibits very low insertion loss and low power consumption. Performance does not change with Vdd due to on-board regulator. This next generation Peregrine DSA is available in a 4x4 mm 24-lead QFN footprint.

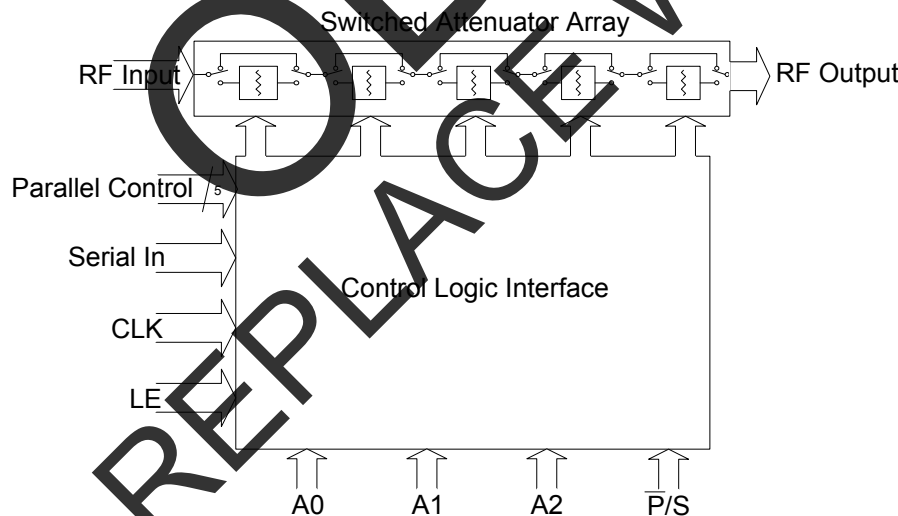
The PE43503 is manufactured on Peregrine's UltraCMOS™ process, a patented variation of silicon-on-insulator (SOI) technology on a sapphire substrate, offering the performance of GaAs with the economy and integration of conventional CMOS.

**Figure 1. Package Type**

24-lead 4x4x0.85 mm QFN Package



**Figure 2. Functional Schematic Diagram**



**50 Ω RF Digital Attenuator**  
**5-bit, 31 dB, 9 kHz - 6.0 GHz**

**Features**

- HaRP™-enhanced UltraCMOS™ device
- Attenuation: 1 dB Steps to 31 dB
- High Linearity. Typical +58 dBm IP3
  - Excellent low-frequency performance
- 3.3 V or 5.0 V Power Supply Voltage
- Fast switch settling time
- Programming Modes:
  - Direct Parallel
  - Latched Parallel
  - Serial
- High-attenuation state @ power-up (PUP)
- CMOS Compatible
- No DC blocking capacitors required
- Packaged in a 24-lead 4x4x0.85 mm QFN

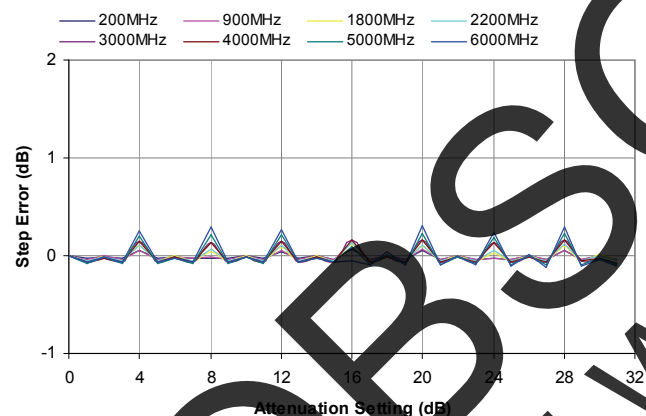
**Table 1. Electrical Specifications @ +25°C, V<sub>DD</sub> = 3.3 V or 5.0 V**

| Parameter              | Test Conditions   | Frequency      | Min.  | Typical | Max.      | Units            |
|------------------------|---|----------------|-------|---------|-----------|------------------|
| Frequency Range        |   |                | 9 kHz |         | 6 GHz     |                  |
| Attenuation Range      | 1 dB Step   |                |       | 0 – 31  |           | dB               |
| Insertion Loss         |   | 9 kHz ≤ 6 GHz  |       | 2.4     | 2.9       | dB               |
| Attenuation Error      | 0dB - 31dB Attenuation settings   | 9 kHz ≤ 4 GHz  |       |         | ±(0.3+3%) | dB               |
|                        | 0dB - 21dB Attenuation settings   | 4 GHz ≤ 6 GHz  |       |         | +0.4+9%   | dB               |
|                        | 22dB - 31dB Attenuation settings  | 4 GHz ≤ 6 GHz  |       |         | +2.4+0%   | dB               |
|                        | 0dB - 31dB Attenuation settings   | 4 GHz ≤ 6 GHz  |       |         | -0.2-3%   | dB               |
| Relative Phase         | All States  | 9 kHz ≤ 6 GHz  |       | 72      |           | °                |
| P1dB (note 1)          | Input   | 20 MHz - 6 GHz | 30    | 32      |           | dBm              |
| Input IP3              | Two tones at +18 dBm, 20 MHz spacing                                      | 20 MHz – 6 GHz |       | +38     |           | dBm              |
| Return Loss            |   | DC ≤ 6 GHz     |       | 17      |           | dB               |
| Switching Speed        | 50% DC CTRL to 10% / 90% RF   |                |       | 650     |           | ns               |
| Typical Spurious Value |   | 1 MHz          |       | -115    |           | dBm              |
| Video Feed Through     |   |                |       | 10      |           | mV <sub>pp</sub> |
| RF Trise/Tfall         | 10% / 90% RF  |                |       | 400     |           | ns               |
| Settling Time          | RF settled to within 0.05 dB of final value<br>RBW = 5 MHz, Averaging ON. |                |       | 4       |           | µs               |

Note 1. Please note Maximum Operating Pin (50Ω) of +23dBm as shown in Table 3.

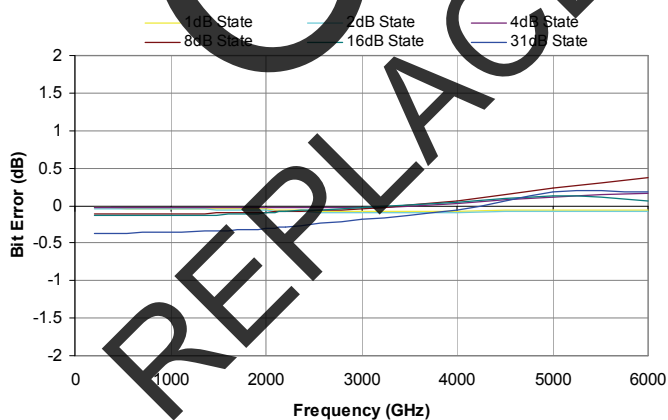
**Performance Plots**

**Figure 3. 1dB Step Error vs. Frequency \***

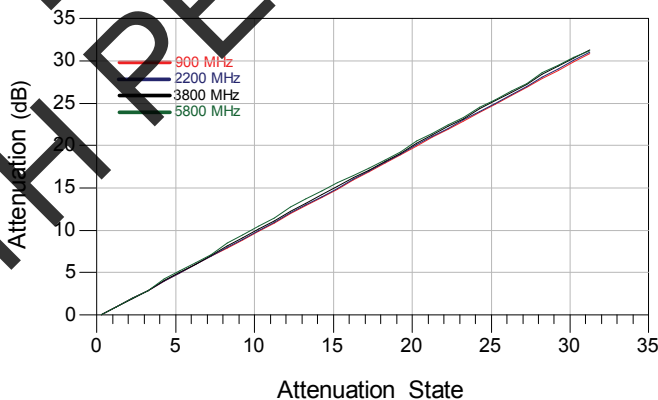


\*Monotonicity is held so long as Step-Error does not cross below -1

**Figure 5. 1dB Major State Bit Error**



**Figure 4. 1dB Attenuation vs. Attenuation State**



**Figure 6. 1dB Attenuation Error vs. Frequency**

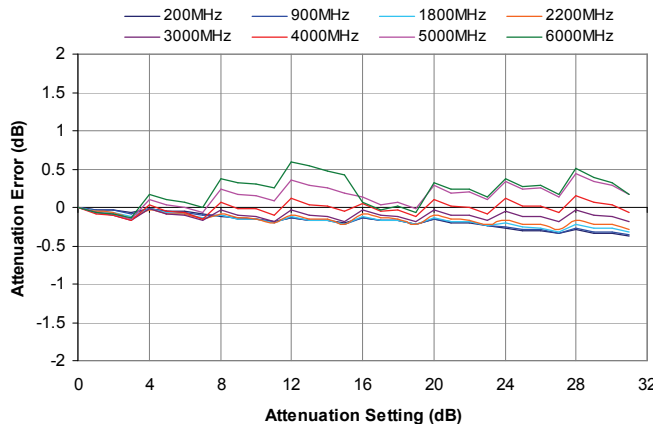


Figure 7. Insertion Loss vs. Temperature

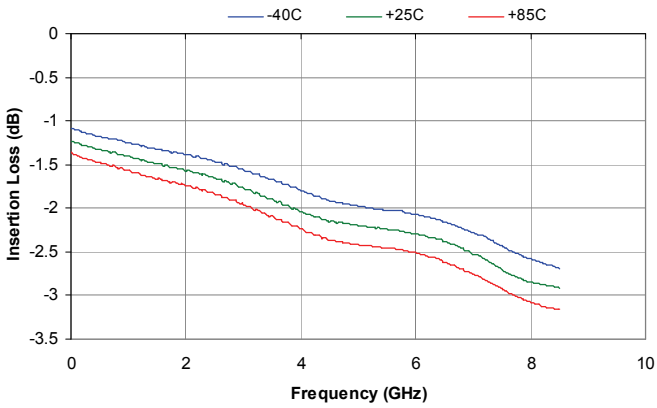


Figure 8. Input Return Loss vs. Attenuation @ T = +25C

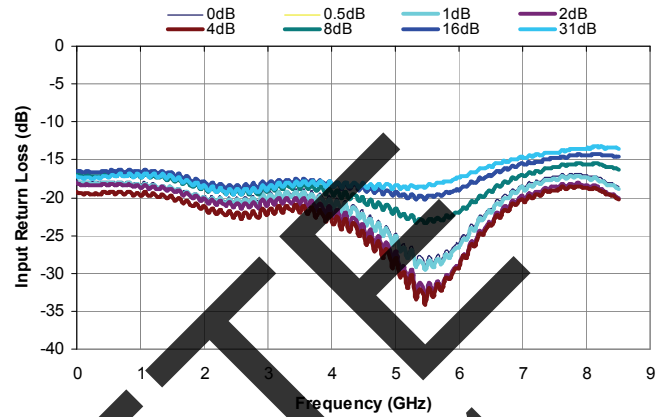


Figure 9. Output Return Loss vs. Attenuation @ T = +25C

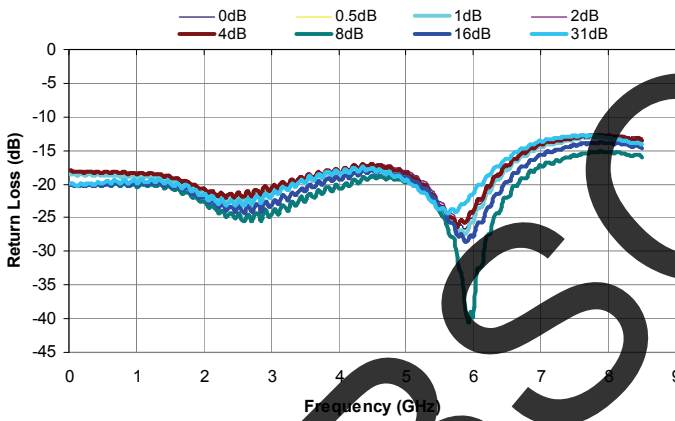


Figure 10. Relative Phase vs. Frequency

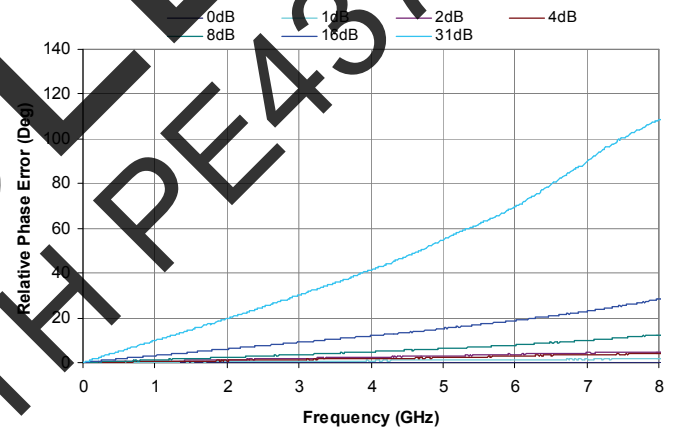


Figure 11. Attenuation Error vs. Temperature @ 6 GHz

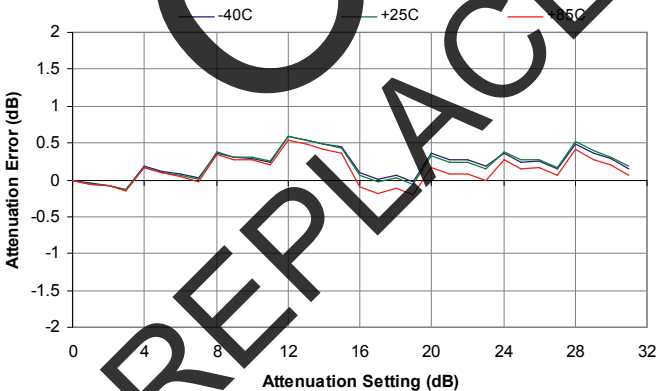


Figure 12. Input IP3 vs. Frequency

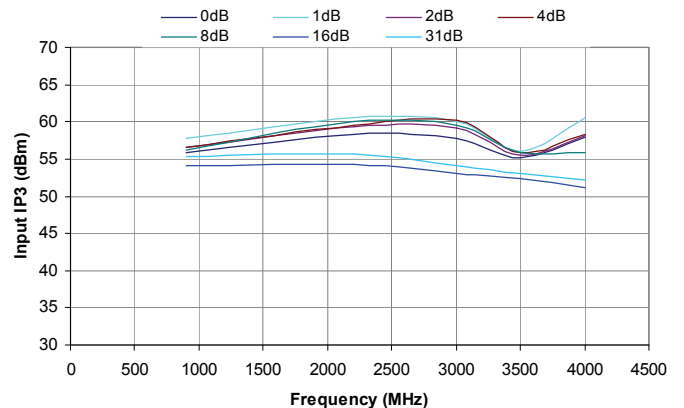


Figure 13. Pin Configuration (Top View)

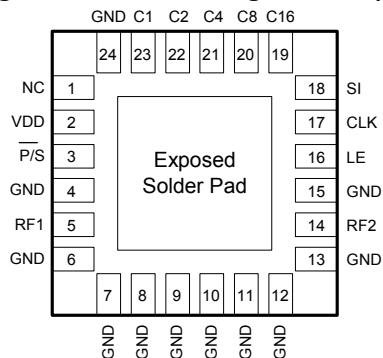


Table 2. Pin Descriptions

| Pin No. | Pin Name        | Description                         |
|---------|-----------------|-------------------------------------|
| 1       | NC              | No Connect                          |
| 2       | V <sub>DD</sub> | Power supply pin                    |
| 3       | P/S             | Serial/Parallel mode select         |
| 4       | GND             | Ground                              |
| 5       | RF1             | RF1 port                            |
| 6       | GND             | Ground                              |
| 7 - 12  | GND             | Ground                              |
| 13      | GND             | Ground                              |
| 14      | RF2             | RF2 port                            |
| 15      | GND             | Ground                              |
| 16      | LE              | Serial interface Latch Enable input |
| 17      | CLK             | Serial interface Clock input        |
| 18      | SI              | Serial interface Data input         |
| 19      | C16 (D6)        | Parallel control bit, 16 dB         |
| 20      | C8 (D5)         | Parallel control bit, 8 dB          |
| 21      | C4 (D4)         | Parallel control bit, 4 dB          |
| 22      | C2 (D3)         | Parallel control bit, 2 dB          |
| 23      | C1 (D2)         | Parallel control bit, 1 dB          |
| 24      | GND             | Ground                              |

Note: Ground C1, C2, C4, C8, C16 if not in use.

### Exposed Solder Pad Connection

The exposed solder pad on the bottom of the package must be grounded for proper device operation.

### Moisture Sensitivity Level

The Moisture Sensitivity Level rating for the PE43503 in the 24-lead 4x4 QFN package is MSL1.

### Switching Frequency

The PE43503 has a maximum 25 kHz switching rate. Switching rate is defined to be the speed at which the DSA can be toggled across attenuation states.

### Latch-Up Avoidance

Unlike conventional CMOS devices, UltraCMOS™ devices are immune to latch-up.

Table 3. Operating Ranges

| Parameter  | Min | Typ | Max            | Units      |
|--|-----|-----|----------------|------------|
| V <sub>DD</sub> Power Supply Voltage                                   | 3.0 | 3.3 |                | V          |
| V <sub>DD</sub> Power Supply Voltage                                   |     | 5.0 | 5.5            | V          |
| I <sub>DD</sub> Power Supply Current                                   |     | 70  | 350            | μA         |
| Digital Input High   | 2.6 |     | 5.5            | V          |
| P <sub>IN</sub> Input power (50Ω):<br>9 kHz ≤ 20 MHz<br>20 MHz ≤ 6 GHz |     |     | Fig. 14<br>+23 | dBm<br>dBm |
| T <sub>OP</sub> Operating temperature range                            | -40 | 25  | 85             | °C         |
| Digital Input Low  | 0   |     | 1              | V          |
| Digital Input Leakage <sup>1</sup>                                     |     |     | 15             | μA         |

Note 1. Input leakage current per Control pin

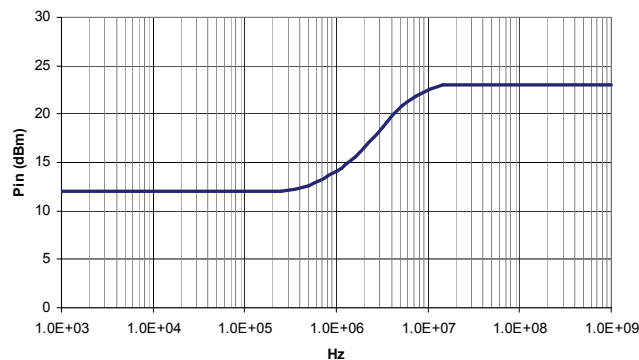
Table 4. Absolute Maximum Ratings

| Symbol           | Parameter/Conditions                                  | Min  | Max            | Units      |
|------------------|---|------|----------------|------------|
| V <sub>DD</sub>  | Power supply voltage                                  | -0.3 | 6.0            | V          |
| V <sub>I</sub>   | Voltage on any Digital input                          | -0.3 | 5.8            | V          |
| T <sub>ST</sub>  | Storage temperature range                             | -65  | 150            | °C         |
| P <sub>IN</sub>  | Input power (50Ω)<br>9 kHz ≤ 20 MHz<br>20 MHz ≤ 6 GHz |      | Fig. 14<br>+23 | dBm<br>dBm |
| V <sub>ESD</sub> | ESD voltage (HBM)                                     |      | 500            | V          |
|                  | ESD voltage (Machine Model)                           |      | 100            | V          |

Note: 1. Human Body Model (HBM, MIL-STD 883 Method 3015.7)

Exceeding absolute maximum ratings may cause permanent damage. Operation should be restricted to the limits in the Operating Ranges table. Operation between operating range maximum and absolute maximum for extended periods may reduce reliability.

Figure 14. Maximum Power Handling Capability



### Electrostatic Discharge (ESD) Precautions

When handling this UltraCMOS™ device, observe the same precautions that you would use with other ESD-sensitive devices. Although this device contains circuitry to protect it from damage due to ESD, precautions should be taken to avoid exceeding the specified rating.

**Table 5. Control Voltage**

| State | Bias Condition                     |
|-------|------------------------------------|
| Low   | 0 to +1.0 Vdc at 2 $\mu$ A (typ)   |
| High  | +2.6 to +5 Vdc at 10 $\mu$ A (typ) |

**Table 6. Latch and Clock Specifications**

| Latch Enable | Shift Clock | Function  |
|--------------|-------------|---|
| X            | $\uparrow$  | Shift Register Clocked                                    |
| $\uparrow$   | X           | Contents of shift register transferred to attenuator core |

**Table 7. Parallel Truth Table**

| Parallel Control Setting |    |    |    |    | Attenuation Setting<br>RF1-RF2 |
|--------------------------|----|----|----|----|--------------------------------|
| D6                       | D5 | D4 | D3 | D2 |                                |
| L                        | L  | L  | L  | L  | Reference I.L.                 |
| L                        | L  | L  | L  | H  | 1 dB                           |
| L                        | L  | L  | H  | L  | 2 dB                           |
| L                        | L  | H  | L  | L  | 4 dB                           |
| L                        | H  | L  | L  | L  | 8 dB                           |
| H                        | L  | L  | L  | L  | 16 dB                          |
| H                        | H  | H  | H  | H  | 31 dB                          |

**Table 8. Attenuation Word Truth Table**

| Attenuation Word |    |    |    |    |    |    |             | Attenuation Setting<br>RF1-RF2 |
|------------------|----|----|----|----|----|----|-------------|--------------------------------|
| D7               | D6 | D5 | D4 | D3 | D2 | D1 | D0<br>(LSB) |                                |
| L                | L  | L  | L  | L  | L  | L  | L           | Reference I.L.                 |
| L                | L  | L  | L  | L  | L  | H  | L           | 1 dB                           |
| L                | L  | L  | L  | L  | H  | L  | L           | 2 dB                           |
| L                | L  | L  | H  | L  | L  | L  | L           | 4 dB                           |
| L                | L  | H  | L  | L  | L  | L  | L           | 8 dB                           |
| L                | H  | L  | L  | L  | L  | L  | L           | 16 dB                          |
| L                | H  | H  | H  | H  | H  | L  | L           | 31 dB                          |

**Table 9. Serial Register Map**

|                               |    |    |    |                              |    |    |    |
|-------------------------------|----|----|----|------------------------------|----|----|----|
| MSB (last in)<br>$\downarrow$ |    |    |    | LSB (first in)<br>$\uparrow$ |    |    |    |
| Q7                            | Q6 | Q5 | Q4 | Q3                           | Q2 | Q1 | Q0 |
| D7                            | D6 | D5 | D4 | D3                           | D2 | D1 | D0 |

Attenuation Word

Bits must be set to logic low

Attenuation Word is derived directly from the attenuation value. For example, to program the 13 dB state:

Attenuation Word: Multiply by 4 and convert to binary  $\rightarrow 4 * 13 \text{ dB} \rightarrow 52 \rightarrow 00110100$   
 Serial Input: 00110100

## Programming Options

### Parallel/Serial Selection

Either a parallel or serial interface can be used to control the PE43503. The  $\bar{P}/S$  bit provides this selection, with  $\bar{P}/S=LOW$  selecting the parallel interface and  $\bar{P}/S=HIGH$  selecting the serial interface.

### Parallel Mode Interface

The parallel interface consists of five CMOS-compatible control lines that select the desired attenuation state, as shown in *Table 7*.

The parallel interface timing requirements are defined by *Fig. 16* (Parallel Interface Timing Diagram), *Table 11* (Parallel Interface AC Characteristics), and switching speed (*Table 1*).

For *latched-parallel* programming the Latch Enable (LE) should be held LOW while changing attenuation state control values, then pulse LE HIGH to LOW (*per Fig. 16*) to latch new attenuation state into device.

For *direct* parallel programming, the Latch Enable (LE) line should be pulled HIGH. Changing attenuation state control values will change device state to new attenuation. Direct Mode is ideal for manual control of the device (using hardware switches, or jumpers).

### Serial Interface

The serial interface is a 8-bit serial-in, parallel-out shift register buffered by a transparent latch. The 8 bits make up the Attenuation Word that controls the DSA. *Fig. 15* illustrates an example timing diagram for programming a state. When the DSA is used in serial mode, ground all parallel control pins (pins 19-23).

The serial-interface is controlled using three CMOS-compatible signals: Serial-In (SI), Clock (CLK), and Latch Enable (LE). The SI and CLK inputs allow data to be serially entered into the shift register. Serial data is clocked in LSB first.

The shift register must be loaded while LE is held LOW to prevent the attenuator value from changing as data is entered. The LE input should then be toggled HIGH and brought LOW again, latching the new data into the DSA. Attenuation Word truth table is listed in *Table 8*. A programming example of the serial register is illustrated in *Table 9*. The serial timing diagram is illustrated in *Fig. 15*. It is required that all parallel pins be grounded when the DSA is used in serial mode.

### Power-up Control Settings

The PE43503 will always initialize to the maximum attenuation setting (31 dB) on power-up for both the serial and latched-parallel modes of operation and will remain in this setting until the user latches in the next programming word. In direct-parallel mode, the DSA can be preset to any state within the 31 dB range by pre-setting the parallel control pins prior to power-up. In this mode, there is a 400- $\mu$ s delay between the time the DSA is powered-up to the time the desired state is set. During this power-up delay, the device attenuates to the maximum attenuation setting (31 dB) before defaulting to the user defined state. If the control pins are left floating in this mode during power-up, the device will default to the minimum attenuation setting (insertion loss state).

Dynamic operation between serial and parallel programming modes is possible.

If the DSA powers up in serial mode ( $\bar{P}/S = HIGH$ ), all the parallel control inputs DI[6:2] must be set to logic low. Prior to toggling to parallel mode, the DSA *must* be programmed serially to ensure D[7] is set to logic low.

If the DSA powers up in either latched or direct-parallel mode, all parallel pins DI[6:2] must be set to logic low prior to toggling to serial mode ( $\bar{P}/S = HIGH$ ), and *held* low until the DSA has been programmed serially to ensure bit D[7] is set to logic low.

The sequencing is only required once on power-up. Once completed, the DSA may be toggled between serial and parallel programming modes at will.

Figure 15. Serial Timing Diagram

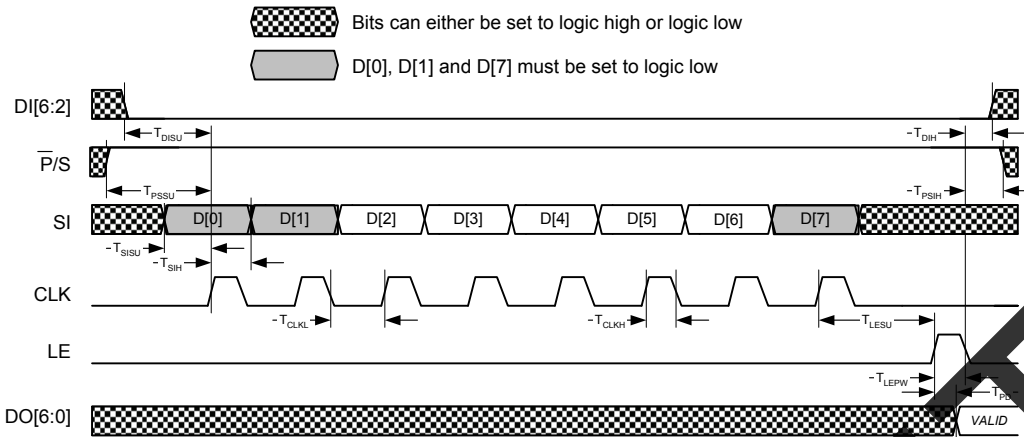


Figure 16. Latched-Parallel/Direct-Parallel Timing Diagram

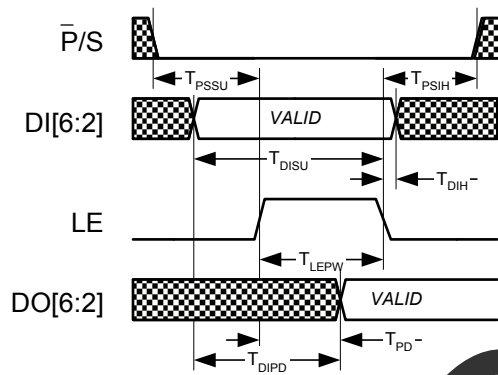


Table 10. Serial Interface AC Characteristics

V<sub>DD</sub> = 3.3 or 5.0 V, -40° C < T<sub>A</sub> < 85° C, unless otherwise specified

| Symbol            | Parameter  | Min | Max | Unit |
|-------------------|--|-----|-----|------|
| F <sub>CLK</sub>  | Serial clock frequency   | -   | 10  | MHz  |
| T <sub>CLKH</sub> | Serial clock HIGH time   | 30  | -   | ns   |
| T <sub>CLKL</sub> | Serial clock LOW time  | 30  | -   | ns   |
| T <sub>LESU</sub> | Last serial clock rising edge setup time to Latch Enable rising edge | 10  | -   | ns   |
| T <sub>LEPW</sub> | Latch Enable min. pulse width  | 30  | -   | ns   |
| T <sub>SISU</sub> | Serial data setup time   | 10  | -   | ns   |
| T <sub>SIH</sub>  | Serial data hold time  | 10  | -   | ns   |
| T <sub>DISU</sub> | Parallel data setup time   | 100 | -   | ns   |
| T <sub>DIH</sub>  | Parallel data hold time  | 100 | -   | ns   |
| T <sub>ASU</sub>  | Address setup time   | 100 | -   | ns   |
| T <sub>AH</sub>   | Address hold time  | 100 | -   | ns   |
| T <sub>PSSU</sub> | Parallel/Serial setup time   | 100 | -   | ns   |
| T <sub>PSH</sub>  | Parallel/Serial hold time  | 100 | -   | ns   |
| T <sub>PD</sub>   | Digital register delay (internal)                                    | -   | 10  | ns   |

Table 11. Parallel and Direct Interface AC Characteristics

V<sub>DD</sub> = 3.3 or 5.0 V, -40° C < T<sub>A</sub> < 85° C, unless otherwise specified

| Symbol            | Parameter   | Min | Max | Unit |
|-------------------|---|-----|-----|------|
| T <sub>LEPW</sub> | Latch Enable minimum pulse width                    | 30  | -   | ns   |
| T <sub>DISU</sub> | Parallel data setup time                            | 100 | -   | ns   |
| T <sub>DIH</sub>  | Parallel data hold time                             | 100 | -   | ns   |
| T <sub>PSSU</sub> | Parallel/Serial setup time                          | 100 | -   | ns   |
| T <sub>PSH</sub>  | Parallel/Serial hold time                           | 100 | -   | ns   |
| T <sub>PD</sub>   | Digital register delay (internal)                   | -   | 10  | ns   |
| T <sub>DIPD</sub> | Digital register delay (internal, direct mode only) | -   | 5   | ns   |

## Evaluation Kit

The Digital Attenuator Evaluation Kit board was designed to ease customer evaluation of the PE43503 Digital Step Attenuator.

### Direct-Parallel Programming Procedure

For automated direct-parallel programming, connect the test harness provided with the EVK from the parallel port of the PC to the J1 & Serial header pin and set the D0-D6 SP3T switches to the 'MIDDLE' toggle position. Position the Parallel/Serial ( $\bar{P}/S$ ) select switch to the Parallel (or left) position. The evaluation software is written to operate the DSA in either Parallel or Serial-Addressable Mode. Ensure that the software is set to program in *Direct-Parallel* mode. Using the software, enable or disable each setting to the desired attenuation state. The software automatically programs the DSA each time an attenuation state is enabled or disabled.

For manual direct-parallel programming, disconnect the test harness provided with the EVK from the J1 and Serial header pins. Position the Parallel/Serial ( $\bar{P}/S$ ) select switch to the Parallel (or left) position. The LE pin on the Serial header must be tied to  $V_{DD}$ . Switches D0-D6 are SP3T switches which enable the user to manually program the parallel bits. When any input D0-D6 is toggled 'UP', logic high is presented to the parallel input. When toggled 'DOWN', logic low is presented to the parallel input. Setting D0-D6 to the 'MIDDLE' toggle position presents an OPEN, which forces an on-chip logic low. Table 9 depicts the parallel programming truth table and Fig. 16 illustrates the parallel programming timing diagram.

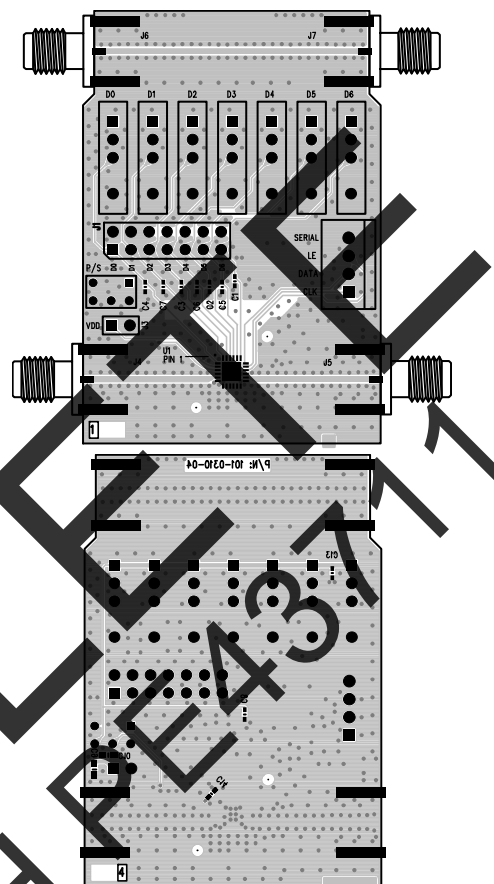
### Latched-Parallel Programming Procedure

For automated latched-parallel programming, the procedure is identical to the direct-parallel method. The user only must ensure that *Latched-Parallel* is selected in the software.

For manual latched-parallel programming, the procedure is identical to direct-parallel except now the LE pin on the Serial header must be logic low

**Figure 17. Evaluation Board Layout**

Peregrine Specification 101-0310



Note: Reference Figure 18 for Evaluation Board Schematic

as the parallel bits are applied. The user must then pulse LE from 0V to  $V_{DD}$  and back to 0V to latch the programming word into the DSA. LE must be logic low prior to programming the next word.

### Serial Programming Procedure

Position the Parallel/Serial ( $\bar{P}/S$ ) select switch to the Serial (or right) position. The evaluation software is written to operate the DSA in either Parallel or Serial Mode. Ensure that the software is set to program in Serial mode. Using the software, enable or disable each setting to the desired attenuation state. The software automatically programs the DSA each time an attenuation state is enabled or disabled.



Figure 18. Evaluation Board Schematic

Peregrine Specification 102-0379

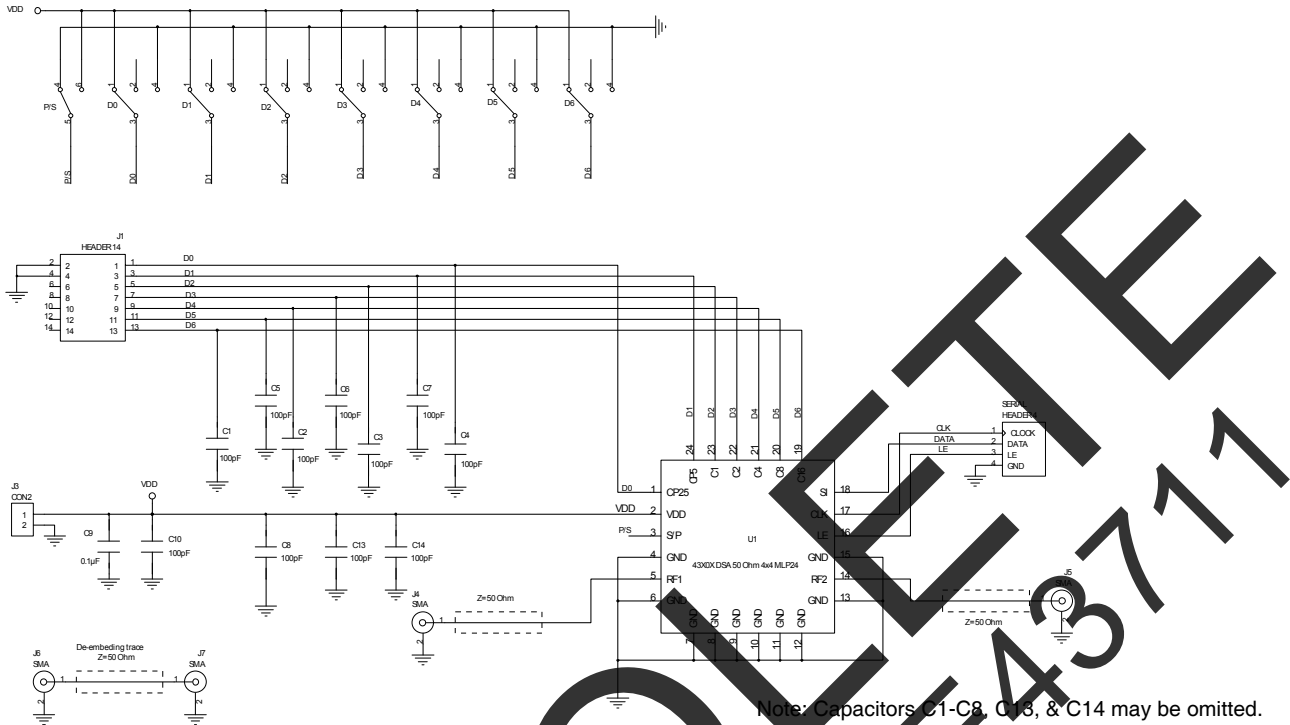


Figure 19. Package Drawing

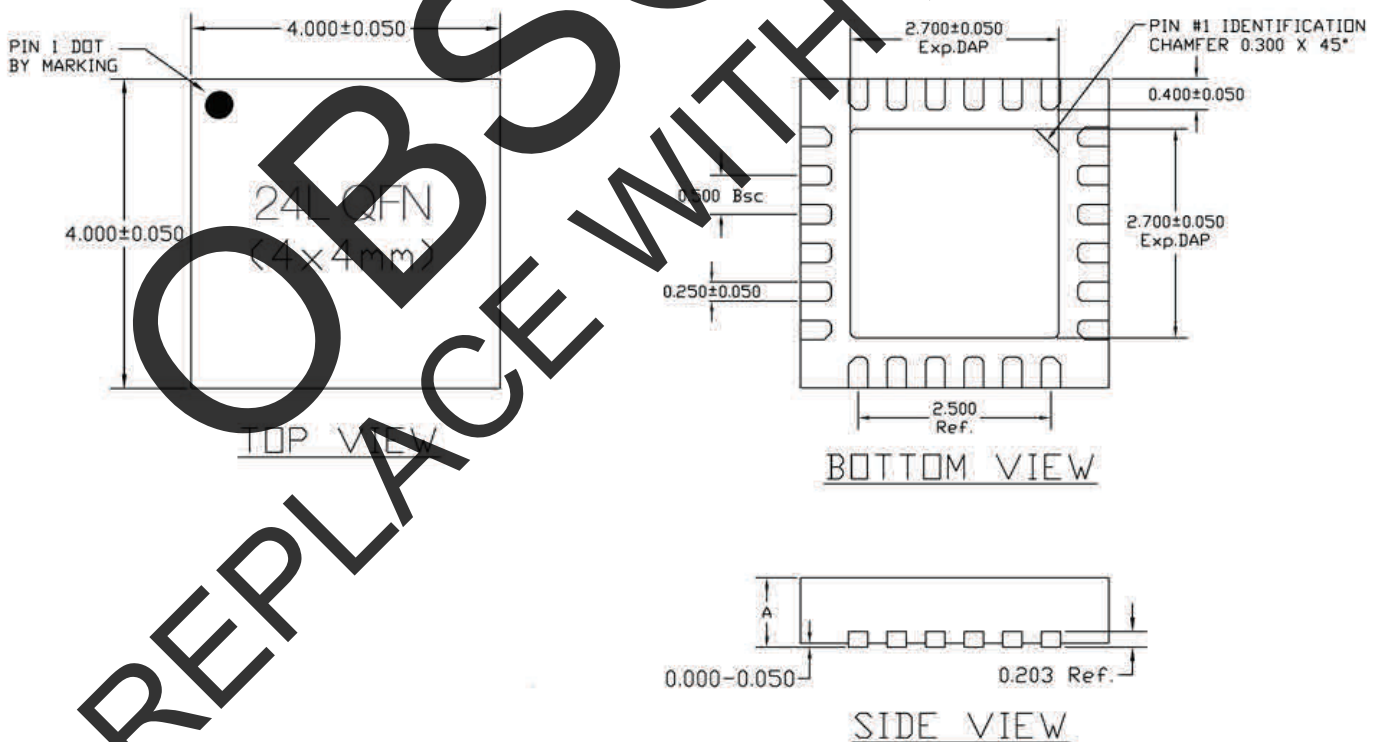
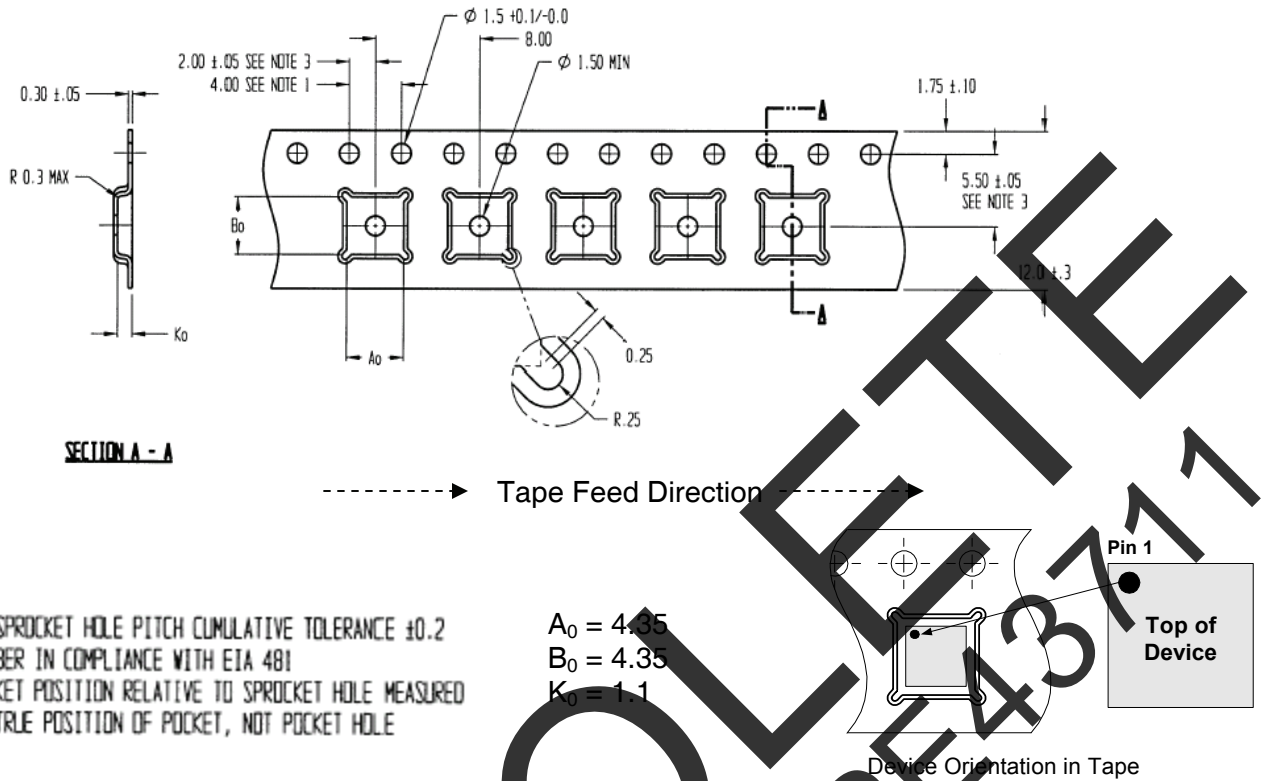


Figure 20. Tape and Reel Drawing



NOTES:

1. 10 SPROCKET HOLE PITCH CUMULATIVE TOLERANCE  $\pm 0.2$
2. CAMBER IN COMPLIANCE WITH EIA 481
3. POCKET POSITION RELATIVE TO SPROCKET HOLE MEASURED AS TRUE POSITION OF POCKET, NOT POCKET HOLE

$A_0 = 4.35$   
 $B_0 = 4.35$   
 $K_0 = 1.1$

Figure 21. Marking Specifications



Table 12. Ordering Information

| Order Code     | Part Marking | Description                   | Package                 | Shipping Method            |
|----------------|--------------|-------------------------------|-------------------------|----------------------------|
| EK-43503-01    | PE43503-EK   | PE43503 – 24QFN 4x4mm-EK      | Evaluation Kit          | 1 / Box                    |
| PE43503 MLI    | 43503        | PE43503 G - 24QFN 4x4mm-75A   | Green 24-lead 4x4mm QFN | Bulk or tape cut from reel |
| PE43503 MLI-FZ | 43503        | PE43503 G – 24QFN 4x4mm-3000C | Green 24-lead 4x4mm QFN | 3000 units / T&R           |

## Sales Offices

### *The Americas*

#### **Peregrine Semiconductor Corporation**

9380 Carroll Park Drive  
San Diego, CA 92121  
Tel: 858-731-9400  
Fax: 858-731-9499

### *Europe*

#### **Peregrine Semiconductor Europe**

Bâtiment Maine  
13-15 rue des Quatre Vents  
F-92380 Garches, France  
Tel: +33-1-4741-9173  
Fax : +33-1-4741-9173

### **High-Reliability and Defense Products**

#### *Americas*

San Diego, CA, USA  
Phone: 858-731-9475  
Fax: 848-731-9499

#### *Europe/Asia-Pacific*

Aix-En-Provence Cedex 3, France  
Phone: +33-4-4239-3361  
Fax: +33-4-4239-7227

For a list of representatives in your area, please refer to our Web site at: [www.psemi.com](http://www.psemi.com)

## Data Sheet Identification

### **Advance Information**

The product is in a formative or design stage. The data sheet contains design target specifications for product development. Specifications and features may change in any manner without notice.

### **Preliminary Specification**

The data sheet contains preliminary data. Additional data may be added at a later date. Peregrine reserves the right to change specifications at any time without notice in order to supply the best possible product.

### **Product Specification**

The data sheet contains final data. In the event Peregrine decides to change the specifications, Peregrine will notify customers of the intended changes by issuing a CNF (Customer Notification Form).

### **Peregrine Semiconductor, Asia Pacific (APAC)**

Shanghai, 200040, P.R. China  
Tel: +86-21-5836-8276  
Fax: +86-21-5836-7652

### **Peregrine Semiconductor, Korea**

#B-2607, Kolon Tripolis, 210  
Geumgok-dong, Bundang-gu, Seongnam-si  
Gyeonggi-do, 463-943 South Korea  
Tel: +82-31-728-3939  
Fax: +82-31-728-3940

### **Peregrine Semiconductor K.K., Japan**

Teikoku Hotel Tower 10B-6  
1-1-1 Uchisaiwai-cho, Chiyoda-ku  
Tokyo 100-0011 Japan  
Tel: +81-3-3502-5211  
Fax: +81-3-3502-5213

The information in this data sheet is believed to be reliable. However, Peregrine assumes no liability for the use of this information. Use shall be entirely at the user's own risk.

No patent rights or licenses to any circuits described in this data sheet are implied or granted to any third party.

Peregrine's products are not designed or intended for use in devices or systems intended for surgical implant, or in other applications intended to support or sustain life, or in any application in which the failure of the Peregrine product could create a situation in which personal injury or death might occur. Peregrine assumes no liability for damages, including consequential or incidental damages, arising out of the use of its products in such applications.

The Peregrine name, logo, and UTSi are registered trademarks and UltraCMOS, HaRP, MultiSwitch and DuNE are trademarks of Peregrine Semiconductor Corp.