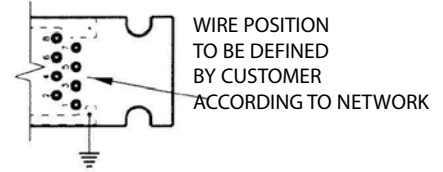


Kit38204, Kit38204NI, Kit40771 & Kit40771NI include:



IMPORTANT NOTE

With these receptacles, you will have to solder your own cable on the PCB. So the wire positions have to be defined according to your network.

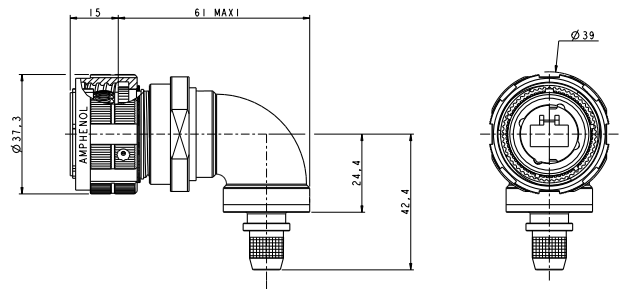


Plug Straight Backshell



| Part number | Plating | P/N |
|-------------|--------------------|------------|
| | Nickel | Kit38081NI |
| | Olive drab cadmium | Kit38081 |

Plug Right Angle Backshell



| Part number | Plating | P/N |
|-------------|--------------------|------------|
| | Nickel | Kit40792NI |
| | Olive drab cadmium | Kit40792 |

Kit38081, Kit38081NI, Kit40792 & Kit40792NI include:



IMPORTANT NOTE

With these plugs, the standard RJ45 plug is not provided. Customer will have to crimp a standard RJ45 on the cable by himself.

Remark: we advise using our double Shielded, reinforced Cat5E cable (see page 39) with these RJFTV series EMI connectors. If customer wants to use his own cable, please check with us regarding compatibility with our backshells: contact@rjfield.com. We also provide assembled cordsets (see examples below). For this type of solution please provide the configuration needed: length, description of second end...

