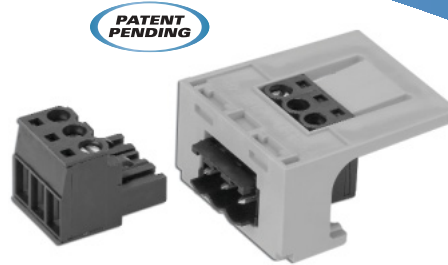


# MINI-COM® BAS Connector Module

## specifications

Industry standard field bus connector shall terminate up to three 18 – 22 AWG connectors or shielded/unshielded cable and shall terminate with the use of a screwdriver. Connector shall mount in patch panels and/or wall plates. The plug end shall be removable from the socket module for disconnection, diagnostic, and termination purposes.



## technical information

<b>AWG conductor:</b>	22 AWG min/18 AWG max
<b>Nominal current rating:</b>	10 A
<b>Contact resistance:</b>	4.5 mOhms
<b>Voltage rating:</b>	300 V max
<b>Electric shock protection to DIN VDE 0470:</b>	IP 20 (safe from finger touch)
<b>Stripping:</b>	7mm
<b>Wire end ferrule, DIN 46 228/1:</b>	.2mm <sup>2</sup> min/2.5mm <sup>2</sup> max
<b>Clamping screw:</b>	M 2.5
<b>Tightening torque:</b>	.4 Nm min/5 Nm max
<b>Pitch (mm/In.):</b>	.20"/5.08mm
<b>Colors:</b>	Connector (Plug and Socket) – Black, Module – Orange, Black, Blue, Green, Red or Yellow

## key features and benefits

<b>Modularity</b>	Dual module snaps in and out of all PANDUIT® MINI-COM® faceplates, modular patch panels, and surface mount boxes for fast moves, adds, and changes
<b>Screw terminals</b>	No punchdown tool required; terminates with screwdriver (SD 0.6 x 3.5 DIN 5264)
<b>Applications</b>	<ul style="list-style-type: none"><li>• LON</li><li>• BACnet MSTP</li><li>• Modbus* RTU</li><li>• Low voltage pass through</li></ul>
<b>Zone application</b>	Provides a common demarcation point for BAS networks and low voltage power for building systems
<b>Connector (Plug and Socket)</b>	Ease of connection and disconnection of power gives the ability to segment networks

## applications

The MINI-COM® BAS Connector Module supports deployment of field bus networks and low voltage system wiring within the IT network pathways. The module creates a demarcation point for the field bus cabling to be “patched” along with other building networks (Ethernet, Video, Audio) within the zone enclosure from the controller out to the

endpoints. This allows for a smooth transition to IP Enabled devices as they are deployed. The MINI-COM® BAS Connector Module easily integrates with other PANDUIT offerings such as zone cabling, DPoE™, jack modules and copper/fiber cabling systems to leverage a common network infrastructure.

\*Modbus is a registered trademark of Modbus Organization, Inc.

### MINI-COM® BAS Connector Module

<b>Orange module:</b>	CMBRS485OR
<b>Black module:</b>	CMBRS485BL
<b>Blue module:</b>	CMBRS485BU
<b>Green module:</b>	CMBRS485GR
<b>Red module:</b>	CMBRS485RD
<b>Yellow module:</b>	CMBRS485YL

### PANZONE® Active Zone Cabling Box

<b>In-ceiling:</b>	CICZC2X2A
--------------------	-----------

### MINI-COM® Modular Faceplate Patch Panel with Labels

<b>24 port:</b>	CPPL24WBL
<b>48 port:</b>	CPPL48WBL

### Insulated Ferrules – Single Wire DIN End Sleeve

<b>22 AWG white:</b>	FSD75-6-D
<b>20 AWG gray:</b>	FSD76-6-D
<b>18 AWG red:</b>	FSD77-6-D

### Ferrule Crimping Tools

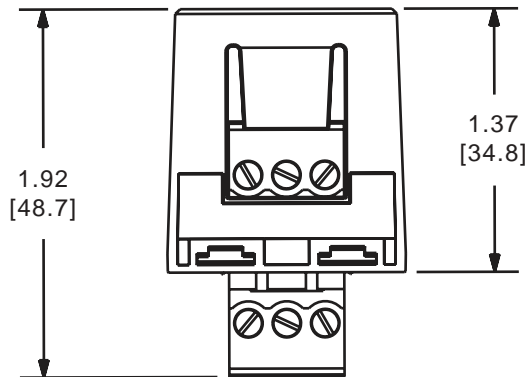
<b>Ferrule end sleeve:</b>	CT-1123
----------------------------	---------

# MINI-COM® BAS Connector Module

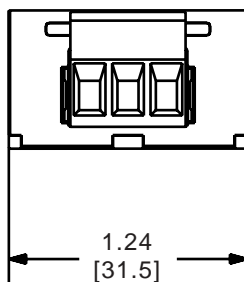
## MINI-COM® BAS Connector Module

Electrical Performance	
Parameters	Performance
Nominal Current Rating	10 A
Volume Resistance	4.5 mOhms
Voltage	300 V Max
Cable Gauge	18 – 22 AWG

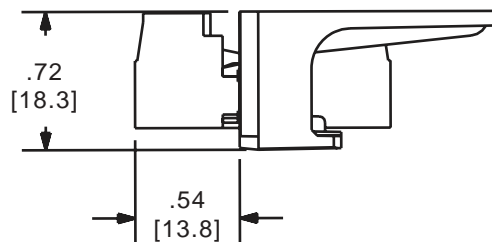
Top View



Front View



Side View



Dimensions are in inches [Dimensions in brackets are metric]

### WORLDWIDE SUBSIDIARIES AND SALES OFFICES

PANDUIT CANADA  
Markham, Ontario  
cs-cdn@panduit.com  
Phone: 800.777.3300

PANDUIT EUROPE LTD.  
London, UK  
cs-emea@panduit.com  
Phone: 44.20.8601.7200

PANDUIT SINGAPORE PTE. LTD.  
Republic of Singapore  
cs-ap@panduit.com  
Phone: 65.6379.6700

PANDUIT JAPAN  
Tokyo, Japan  
cs-japan@panduit.com  
Phone: 81.3.3767.7011

PANDUIT LATIN AMERICA  
Jalisco, Mexico  
cs-la@panduit.com  
Phone: 52.333.777.6000

PANDUIT AUSTRALIA PTY. LTD.  
Victoria, Australia  
cs-aus@panduit.com  
Phone: 61.3.9794.9020

For a copy of PANDUIT product warranties, log on to [www.panduit.com/warranty](http://www.panduit.com/warranty)



For more information

Visit us at [www.panduit.com](http://www.panduit.com)

Contact Customer Service by email: [cs@panduit.com](mailto:cs@panduit.com)  
or by phone: 800-777-3300 and reference COSP60

©2006 PANDUIT Corp.  
ALL RIGHTS RESERVED.  
Printed in the U.S.A.

WW-COSP60

10/2006