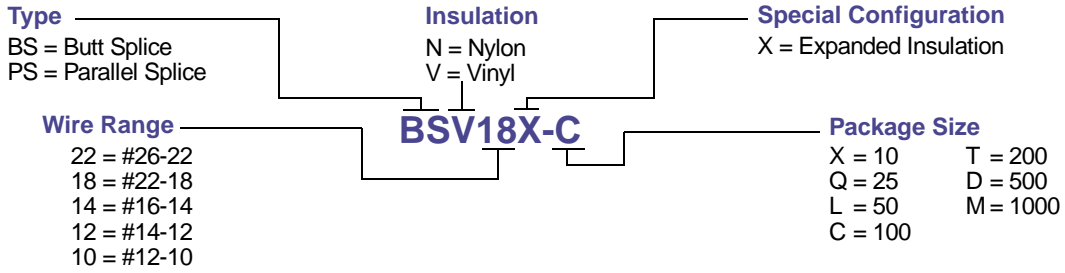


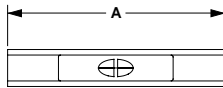
Part Number System for PAN-TERM® Splices



BUTT SPLICES

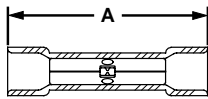
Nylon Insulated

- Brazed Seam
- Internal Wire Stops assure proper insertion length



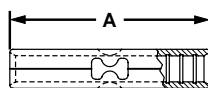
Vinyl Insulated

- Expanded Insulation
- Insulation Support
- Internal Wire Stops



Non-Insulated

- Brazed Seam
- Internal Wire Stops



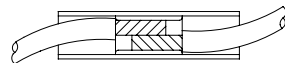
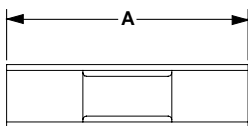
PANDUIT® Part Number	Wire Range	Color Code	Max. Ins.	Dim. (In.) A	Std. Pkg. Qty.	Std. Ctn. Qty.	Bulk Pkg. Qty.	Bulk Ctn. Qty.	Crimp Tools
BSN22-C	26-22	Yellow	.080	.79	100	1000	1000	6000	CT-100 CT-1525
BSN18-C	22-18	Red	.115	1.15	100	1000	1000	6000	CT-100 CT-600 CT-1525 CT-1550 CT-1551
BSN14-C	16-14	Blue	.148	1.15	100	1000	1000	6000	
BSN10-L	12-10	Yellow	.210	1.18	50	500	500	3000	
BSV18X-C	22-18	Red	.183	1.03	100	1000	1000	6000	CT-100 CT-600 CT-1550 CT-1551
BSV14X-C	16-14	Blue	.211	1.04	100	1000	1000	6000	
BSV10X-L	12-10	Yellow	.260	1.18	50	500	500	3000	
BS22-C	26-22	—	—	.47	100	1000	1000	10,000	CT-100
BS18-C	22-18	—	—	.62	100	1000	1000	10,000	
BS14-C	16-14	—	—	.62	100	1000	1000	10,000	CT-600 CT-1570
BS10-L	12-10	—	—	.72	50	500	500	5000	

Order the number of pieces required in multiples of standard package quantities.
 L = 50 pcs., C = 100 pcs., D = 500 pcs. and M = 1000 pcs.
 Prime items appear in **BOLD**.

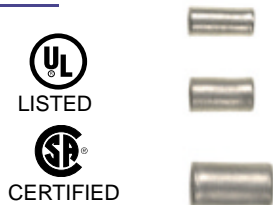
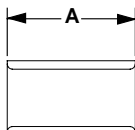
PARALLEL SPLICES

Nylon Insulated

- Only one crimp is needed to complete the splice



Non-Insulated



PANDUIT Part Number	Wire Range	Color Code	Max. Ins.	Dim. (In.) A	Std. Pkg. Qty.	Std. Ctn. Qty.	Bulk Pkg. Qty.	Bulk Ctn. Qty.	Crimp Tools
PSN18-C	22-18	Red	.129	.75	100	500	1000	6000	CT-100 CT-1525
PSN16-C	20-16	Blue	.150	.75	100	500	1000	6000	
PSN12-L	14-12	Yellow	.204	.83	50	500	500	3000	
PS18-C	22-18	—	—	.29	100	500	1000	10,000	CT-100 CT-200
PS16-C	20-16	—	—	.29	100	500	1000	10,000	
PS12-L	14-12	—	—	.38	50	500	500	5000	

Order the number of pieces required in multiples of standard package quantities.
 L = 50 pcs., C = 100 pcs., D = 500 pcs. and M = 1000 pcs.
 Prime items appear in **BOLD**.