

DESCRIPTION: 15 POS - HIGH DENSITY - FEMALE - SLIM - RIGHT ANGLE

MATERIAL/FINISH:

UNITS = INCHES [MM]

SHELL: SPCC, NICKEL PLATED
BRACKET: BRASS, NICKEL PLATED
INSULATOR: PBT OR PA9T, UL 94V-0, BLACK,
PROCESS TEMP: 230°C for 3 seconds (PBT), 2 CYCLES
260°C for 5 seconds (PA9T), 2 CYCLES
CONTACT: BRASS, TIN PLATED
30u" GOLD PLATED - MATING AREA
BRIGHT TIN - TERMINATING AREA
BOARDLOCK: COPPER ALLOY, TIN PLATED
RIVET: COPPER ALLOY, NICKEL PLATED

ELECTRICAL:

RATED CURRENT: 3 AMPS
RATED VOLTAGE: 250 VAC (rms) MAX.
WITHSTANDING VOLTAGE: 500 VAC (rms) FOR 1 Min.
INSULATION RESISTANCE: 1,000 MOhms MIN.
CONTACT RESISTANCE: 25 mOhms Max.
OPERATING TEMPERATURE: -55° ~ +85° C

TOTAL MATING FORCE: 6.0 Kgf MAX.
TOTAL UNMATING FORCE: 1.2 Kgf MIN.

200-015-2 1 3LYY Y

SERIES
No. of POSITIONS
GENDER
2 = FEMALE
TERMINATION
1 = PC MOUNT
SHELL PLATING
3 = NICKEL
INSULATOR MATERIAL
L = PBT
R = PA9T
HARDWARE OPTIONS
SEE PAGE 2
PLATING OPTIONS
7 = GOLD FLASH (MATING AREA)
BRIGHT TIN (SOLDER TAILS)
9 = 30u" GOLD (MATING AREA)
BRIGHT TIN (SOLDER TAILS)

DO NOT SCALE FROM DRAWING



THESE DRAWINGS AND SPECIFICATIONS ARE THE PROPERTY OF NorComp AND SHALL NOT BE REPRODUCED, COPIED OR USED AS THE BASIS FOR THE MANUFACTURE OR SALE OF APPARATUS WITHOUT WRITTEN PERMISSION.

DRAWN:

M. SIGMON

DATE:

10-26-16

NorComp

SCALE:

NTS

SHEET

OF

2

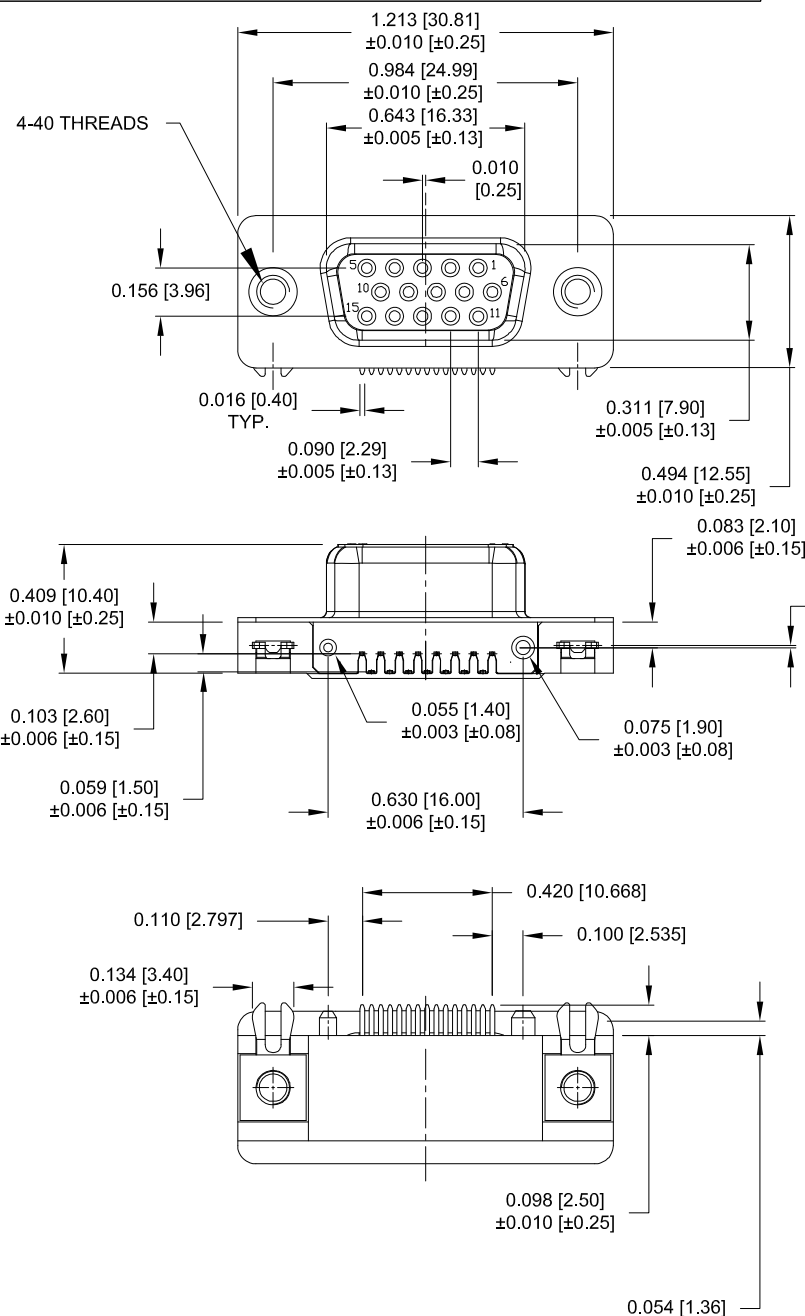
REV

3

DWG NO.

200-015-213LYYY

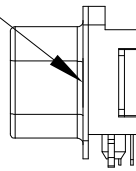
RoHS COMPLIANT



UNITS = INCHES [MM]

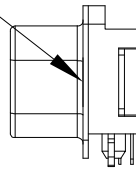
Ø0.120 [Ø3.05]
HOLE IN FLANGE

00 OPTION



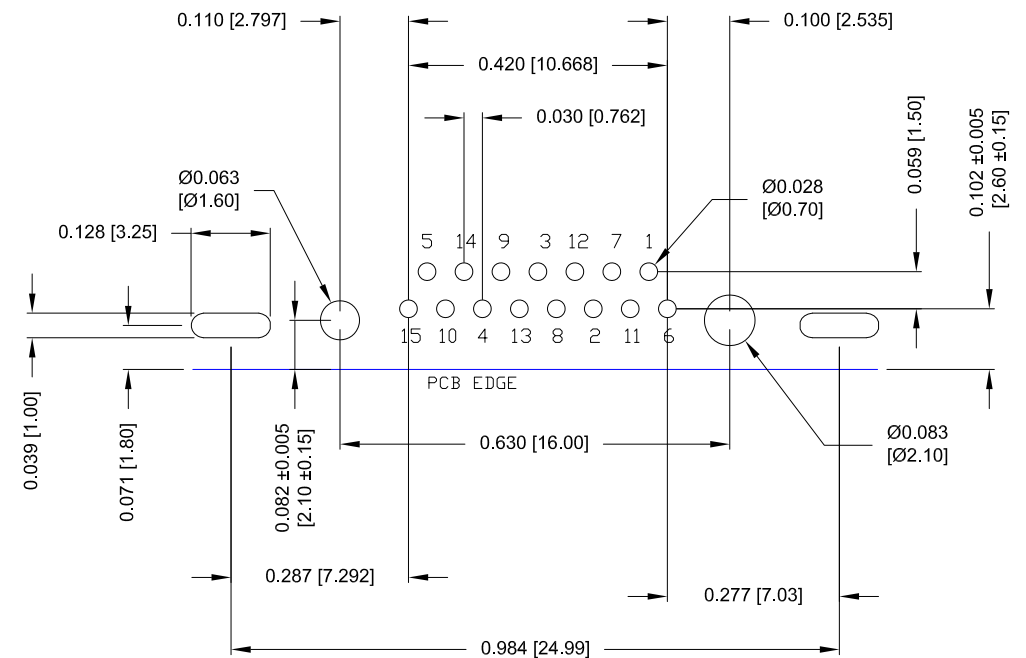
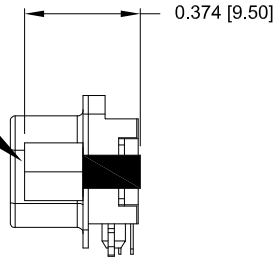
4-40 THREADED HOLE

53 OPTION



4-40 SCREWLOCK
(0.228 [5.80] x 0.374 [9.50])

56 OPTION



P.C.B. LAYOUT

TOLERANCE = ± 0.002 [± 0.05]
*UNLESS OTHERWISE SPECIFIED

DO NOT SCALE FROM DRAWING



THESE DRAWINGS AND SPECIFICATIONS ARE THE PROPERTY OF NorComp AND SHALL NOT BE REPRODUCED, COPIED OR USED AS THE BASIS FOR THE MANUFACTURE OR SALE OF APPARATUS WITHOUT WRITTEN PERMISSION.

DRAWN:

M. SIGMON

DATE:

10-26-16

SCALE:
NTS

SHEET	OF
2	2

REV
3

DWG NO. 200-015-213LYYY

RoHS COMPLIANT

NorComp