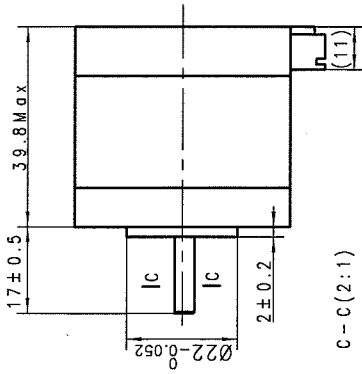
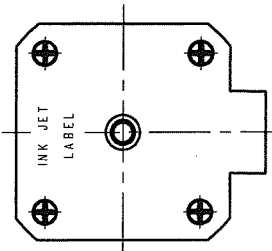
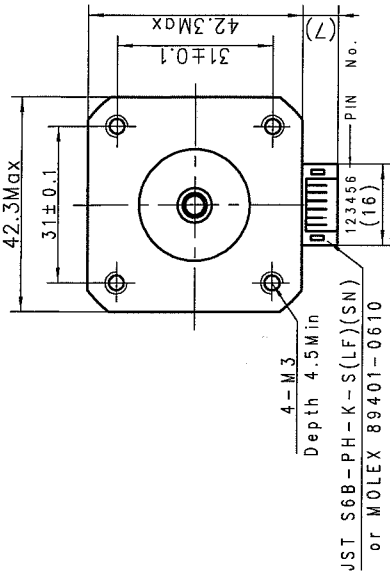
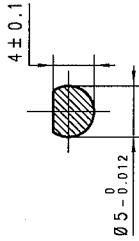


4611110014496

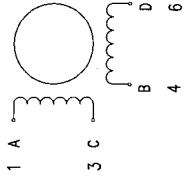


C-C (2:1)



JST S6B-PH-K-S(LF)(SN)
or MOLEX 89401-0610

接线图
Wiring Diagram



励磁顺序 vs. 旋转方向

Exciting Sequence vs. Direction of Rotation

STEP	A	B	C	D	CW	CCW
1	+	+	-	-	+	-
2	-	+	+	-	-	+
3	-	-	+	+	+	-
4	+	-	-	+	-	+

从安装面看为顺时针方向

Clockwise view from mounting side

铭牌 Label Detail

MOONS' STEPPING MOTOR
TYPE 17HD2020-05N
XXXXXXXX YY/MM/DD

Work Order 加工单号
Date 日期
Format 日期格式



规格 Specifications

1. 相数 Number of Phase	2
2. 步距角 Step Angle	1.8°
3. 额定电压 Rated Voltage	4.4 V DC
4. 额定电流 Rated Current	1.0 Amp
5. 保持力矩 Holding Torque	0.39N.m Min. (Two phase on/rated current)
6. 相电阻 Phase Resistance	4.4 ohm±10%(20°C)
7. 相电感 Phase Inductance	9.8 mH±20%(1kHz 1V rms).5
8. 转子惯量 Rotor Inertia	57g.cm ²
9. 电机重量 Motor Weight	0.28kg
10. 绝缘等级 Insulation Class	B (130°C)

REV.	版本记录 REVISION RECORD	DATE	UNLESS OTHERWISE SPECIFIED	NAMES	SIGNATURE	DATE	Type: 17HD2020-05N	Rev.A	SCALE 1:1	Sheet 1 of 1
A	原始版本 Original revision	2015.10.11		设计 Design	巩文健	2015.10.11				
				审核 Check						
				工艺 Technology						
				标准化 Standard						
				批准 Approve						

MOONS'		Hybrid Stepping Motor	
Shanghai MOONS' Electric Co., Ltd.			
This document is released for information only. Its reproduction in whole or in part or its dissemination to third parties is prohibited.			
All trademarks and registered trademarks appearing on this document are the property of their respective owners.			
Unit: mm	第一角画法 FIRST ANGLE METHOD	未注线性与角度尺寸公差 Tolerances for linear and angular dimensions without individual tolerance indications GB/T 1804-m eqv ISO 2768-1:m	未注形状与位置尺寸公差 Geometrical tolerance for features without individual tolerance indications GB/T 1184-K eqv ISO 2768-2:K
UNLESS OTHERWISE SPECIFIED			