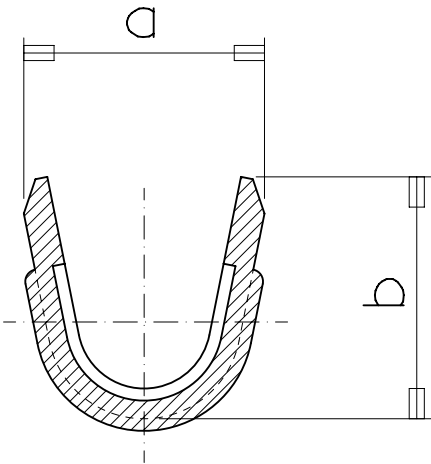


NOTES

1. MATERIAL : BRASS , 0.5mm THICKNESS
2. PART NO.

PART NO.	DIM'S		FINISH	WIRE SIZE	MAT'L THICK'	TRADE MARK
	a	b				
35760-7100	3.3	3.3	UNPLATED	AWG #20-#16	0.5mm	MK2
35760-7110			POST PLATED TIN			
35760-7140			TIN-LEAD			
35760-7200	4.2	4.2	UNPLATED	AWG #16-#12	0.5mm	MK2
35760-7210			POST PLATED TIN			
35760-7240			TIN-LEAD			



SEC' : A-A''

THIS DRAWING CONTAINS INFORMATION THAT IS PROPRIETARY TO MOLEX ELECTRONIC TECHNOLOGIES, LLC AND SHOULD NOT BE USED WITHOUT WRITTEN PERMISSION											
DIMENSION UNITS		SCALE		CURRENT REV DESC: OBSOLETE PART NO			<div>molex</div> <div>WIRE SPLICE(S),(SM)</div>				
mm		8:1									
GENERAL TOLERANCES (UNLESS SPECIFIED)				EC NO: 625872 DRWN: AKUMAR19 2019/06/13 CHK'D: GB 2019/11/06 APPR: GGA 2019/11/12			PRODUCT CUSTOMER DRAWING				
	MM		INCH								
4 PLACES	±		±								
3 PLACES	±		±								
2 PLACES	±	0.2	±								
1 PLACE	±	0.3	±	INITIAL REVISION: DRWN: J.S.KANG 1993/10/07 APPR: C.W.LEE 1993/10/07			DOCUMENT NUMBER		DOC TYPE	DOC PART	REVISION
0 PLACES	±		±				SD-35760-7XX0		PSD	001	C
ANGULAR TOL ± °											
DRAFT WHERE APPLICABLE MUST REMAIN WITHIN DIMENSIONS				THIRD ANGLE PROJECTION		DRAWING	SERIES	MATERIAL NUMBER	CUSTOMER		SHEET NUMBER
						B-SIZE	35760	SEE TABLE	GENERAL CUSTOMER		1 OF 1