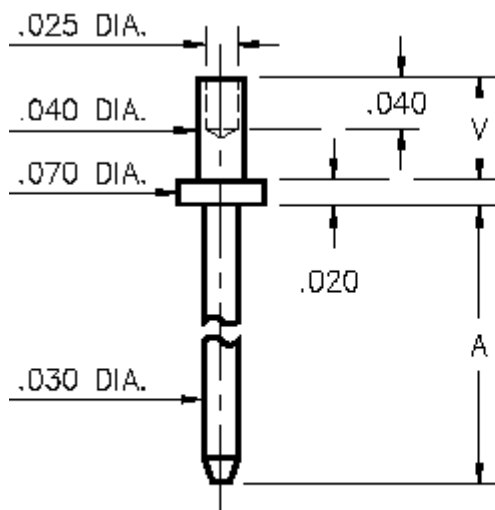




DATA SHEET

Product Number: 3111-3-00-15-00-00-08-0



Basic Part #	Board Thick-ness	Length A	Length V
3110-1	.031	.150	.051
3110-2	.062	.150	.082
3110-3	.094	.150	.113
3111-1	.031	.300	.051
3111-2	.062	.300	.082
3111-3	.094	.300	.113

Description:

3111 - Swage Terminal Pin

Packaging:

Packaged in Bulk

311X-X-00-XX-00-00-08-0

Swage mount in .043 hole

Mill-Max Part Number	Shell Plating	Contact Plating	RoHS Compliant
3111-3-00-15-00-00-08-0	10 μ " Gold over Nickel	00	

SHELL MATERIAL:

BRASS ALLOY (UNS C36000) per ASTM B 16

Properties of BRASS ALLOY:

- Chemical composition: Cu 61.5%, Zn 35.4%, Pb 3.1%†
- Hardness as machined: 80-90 Rockwell B
- Density: .307 lbs/in³
- Electrical conductivity: 26% IACS*
- Melting point: 900°C/885°C (liquidus/solidus)

†(3 to 4% lead is used to permit "free machining" and is permitted by EC Directive 2002/95Annex 6; so all pin materials are RoHS compliant)

*International Annealed Copper Standard, i.e. as a % of pure copper.