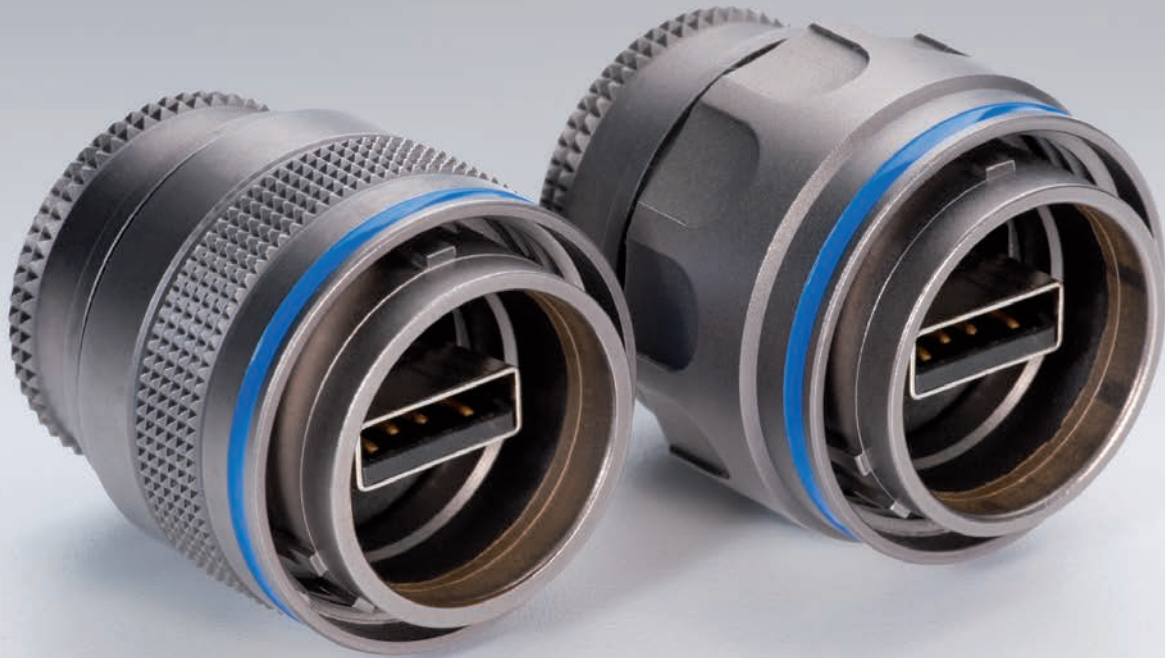


## M SERIES USB CONNECTORS RATCHET COUPLING



### Rugged Waterproof USB Connector (IP68)

LEMO has added a USB connector to its M Series product. This addition of a USB type A connector offers a reliable solution for harsh environments and when mated the connector meets the IP68 rating. This particular connector is designed for outdoor use including oil/petroleum, automotive, mining, military, marine or any type of application that requires rugged and reliable connections.

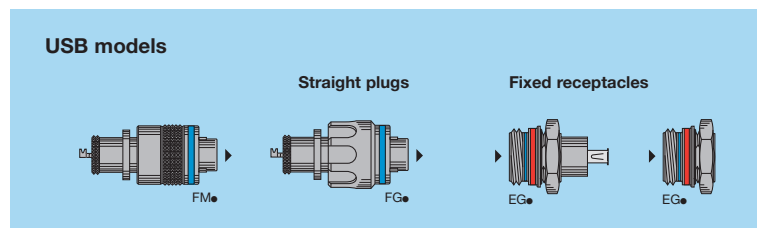
The complete product line includes panel mount sockets, plugs, protective, and caps.

#### Features & Benefits

- Waterproof IP68 (when mated)
- Rugged, Outdoor, Harsh Environment
- Resistance to Vibration
- Lightweight
- Fast and Easy to Secure USB
- Aluminum or Brass outershell with conductive finish
- Use with off-the-shelf USB cable assemblies
- Easy to Use
- USB 2.0

This new addition to the M Series is just another product built by LEMO with Quality, Reliability and Safety!

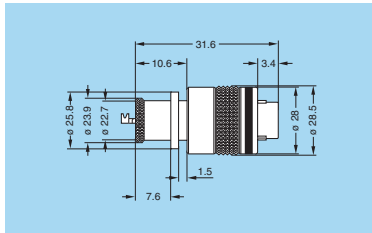
## Interconnections



## Models

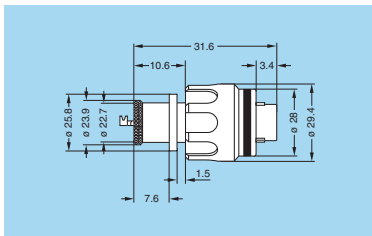
**FM•LM.U2A.XPAT**

Straight plug, key (W) or key (R) with knurled grip and mold stop – cable attach; solder



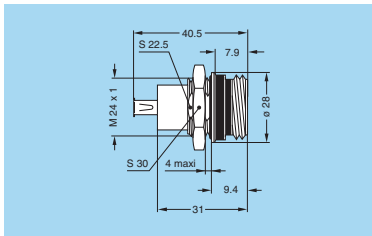
**FG•LM.U2A.XPAT**

Straight plug, key (W) or key (R) with arctic grip and mold stop – cable attach; solder



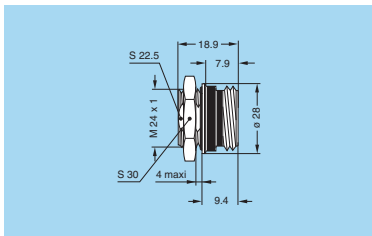
**EG•LM.U2A.XPP**

Fixed receptacle, female to female, nut fixing, key (W) or key (R) – USB connector socket



**EG•LM.U2A.XPL**

Fixed receptacle, nut fixing, key (W) or key (R) wire attach (solder)

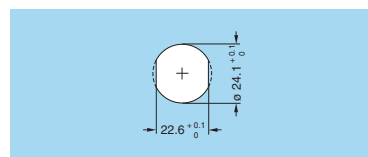


## Insert configuration

| Male front view | Female front view | Reference | Number of contacts | Solder contact | AWG | Test voltage (kV rms) <sup>1)</sup><br>Contact-contact | Test voltage (kV rms) <sup>1)</sup><br>Contact-shell | Rated current (A) <sup>1)</sup> |
|-----------------|-------------------|-----------|--------------------|----------------|-----|--|--|---------------------------------|
|                 |                   | U2A       | 4                  | •              | –   | 1.20   | 0.95   | n.a.                            |

Note: 1) Test voltage according to IEC 60512-2 test 4a.

## Cut-outs



## Mounting nut torque (on panel)

| Torque (Nm) |
|-------------|
| 6.5         |

## Alignment Key and Polarized Keying System

| Front view receptacle | Model    | Nb of keys | Angles      |              |            |            | Color code     | Contact type |            |
|-----------------------|----------|------------|-------------|--------------|------------|------------|----------------|--------------|------------|
|                       |          |            | α           | β            | γ          | δ          |                | Plug         | Receptacle |
|                       | •W<br>•R | 5          | 95°<br>105° | 115°<br>115° | 35°<br>30° | 25°<br>20° | blue<br>yellow | male         | female     |

## Cable Termination Side



## LEMO USA

P.O. Box 2408, Rohnert Park, CA 94927-2408  
Tel: 707.578.8811 800.444.5366 Fax: 707.578.0869  
info@lemousa.com