

RONDA-REC-60-C

~60° + 60° rectangular beam with holder C
compatible with LEDiL HEKLA

TECHNICAL SPECIFICATIONS:

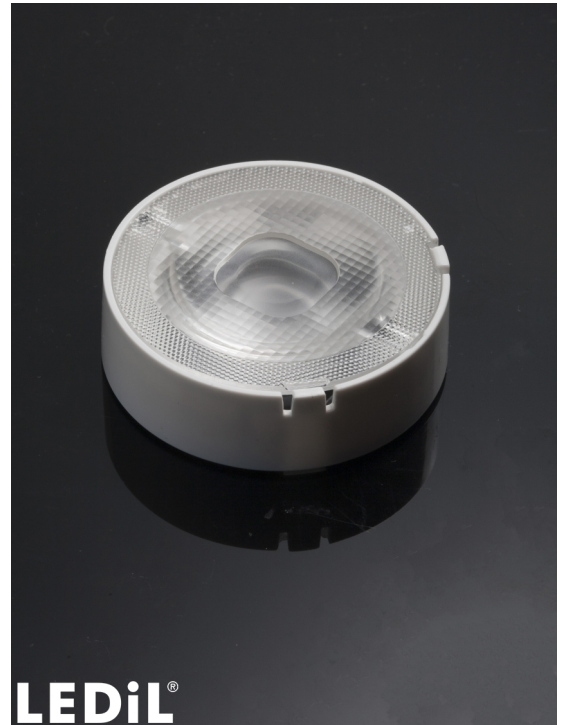
Dimensions	Ø 53.9 mm
Height	16.6 mm
Fastening	socket
ROHS compliant	yes ⓘ

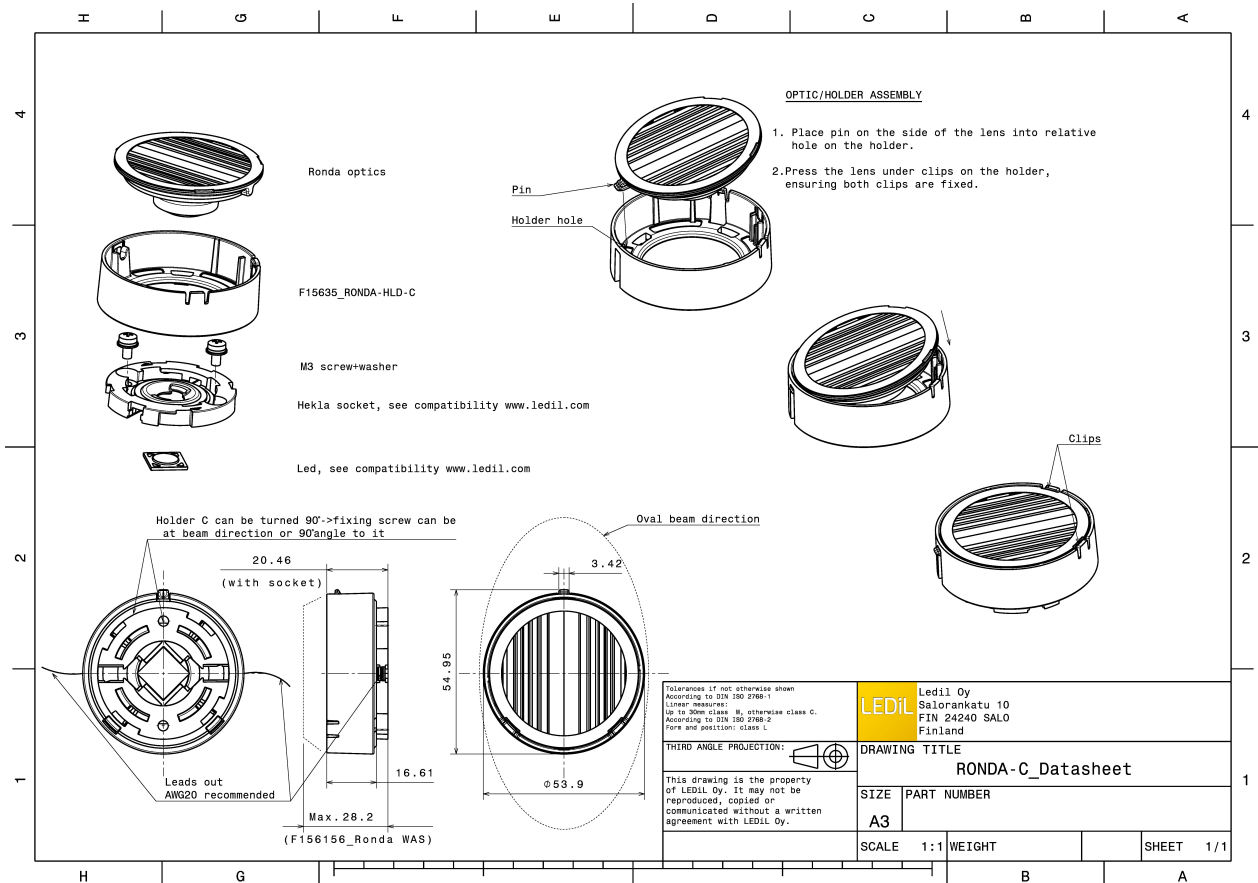
MATERIAL SPECIFICATIONS:

Component	Type	Material	Colour	Finish
RONDA-REC-60	Single lens	PMMA	clear	
RONDA-HLD-C	Holder	PC	white	

ORDERING INFORMATION:

Component		Qty in box	MOQ	MPQ	Box weight (kg)
FN15973_RONDA-REC-60-C	Single lens	420	120	30	0.0
» Box size:					

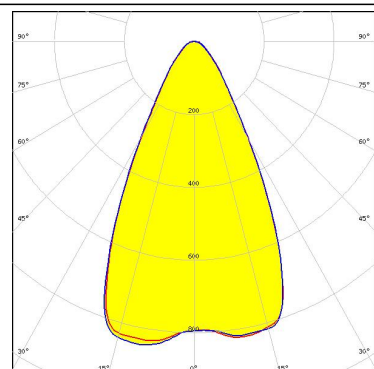
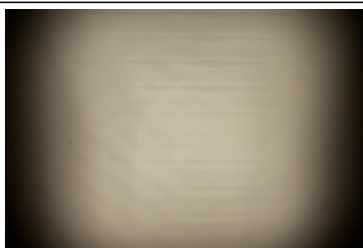




PHOTOMETRIC DATA (MEASURED):

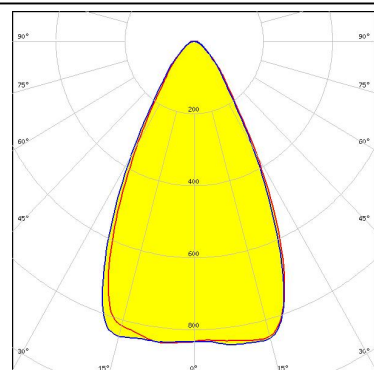
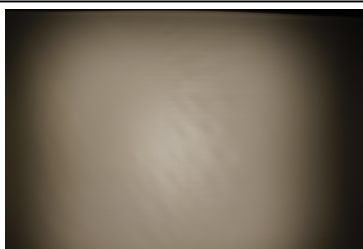
bridgelux[®]

LED V4 HD
FWHM 54.7 + 54.4°
Efficiency 92 %
Peak intensity 0.9 cd/lm
LEDs/each optic 1
Light colour White
Required components:
F15253_HEKLA-SOCKET-A



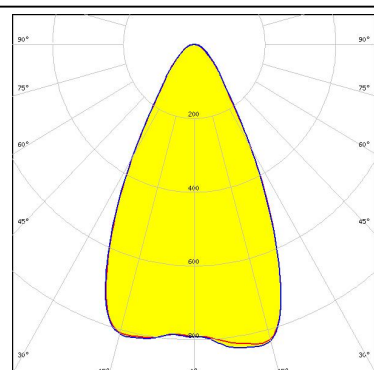
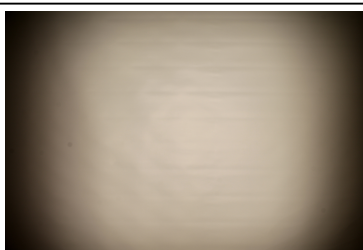
bridgelux[®]

LED V6 Gen6
FWHM 56.0 + 57.0°
Efficiency 92 %
Peak intensity 0.9 cd/lm
LEDs/each optic 1
Light colour White
Required components:
F15253_HEKLA-SOCKET-A



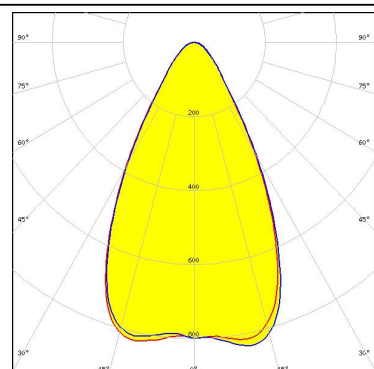
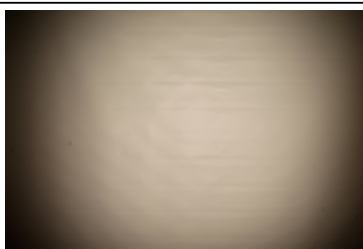
bridgelux[®]

LED V6 HD
FWHM 56.4 + 56.5°
Efficiency 91 %
Peak intensity 0.9 cd/lm
LEDs/each optic 1
Light colour White
Required components:
F15255_HEKLA-SOCKET-C



bridgelux[®]

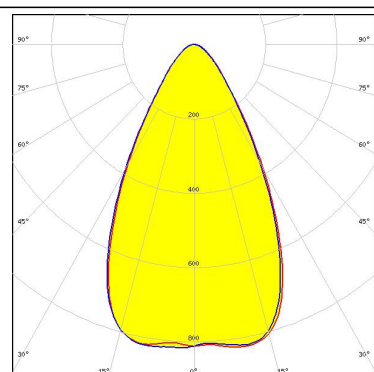
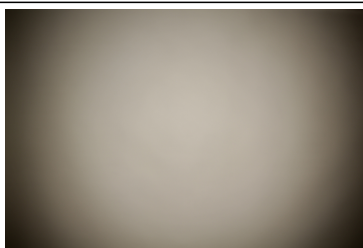
LED V9 HD
FWHM 57.7 + 56.8°
Efficiency 89 %
Peak intensity 0.8 cd/lm
LEDs/each optic 1
Light colour White
Required components:



PHOTOMETRIC DATA (MEASURED):

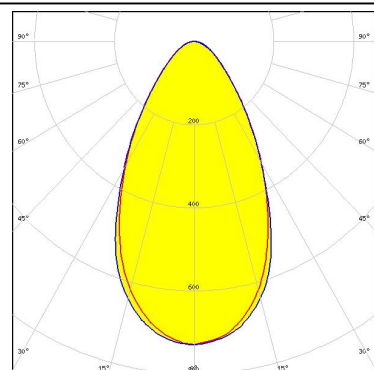
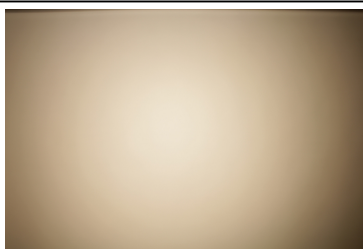
bridgelux

LED VERO10
FWHM 59.0°
Efficiency 90 %
Peak intensity 0.8 cd/lm
LEDs/each optic 1
Light colour White
Required components:
F15616_HEKLA-SOCKET-F



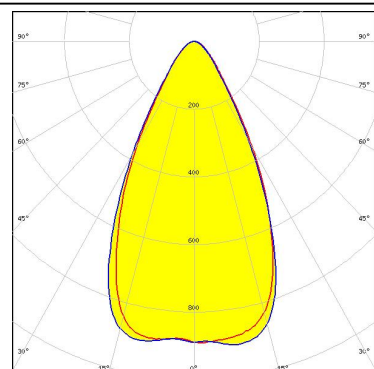
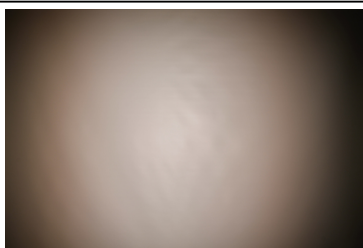
bridgelux

LED Vesta DTW 15mm (33W)
FWHM 58.0°
Efficiency 84 %
Peak intensity 0.7 cd/lm
LEDs/each optic 1
Light colour White
Required components:
C16142_HEKLA-SOCKET-K
Bender Wirth: 491 Typ L8



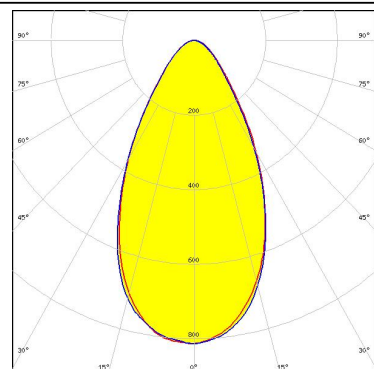
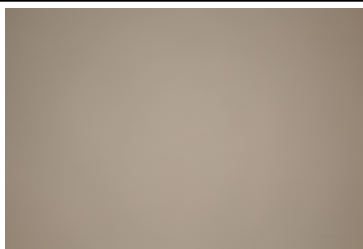
bridgelux

LED Vesta DTW 9mm (4W/6W/12W)
FWHM 55.0°
Efficiency 87 %
Peak intensity 0.9 cd/lm
LEDs/each optic 1
Light colour White
Required components:
C16142_HEKLA-SOCKET-K
Bender Wirth: 490 Typ L8



bridgelux

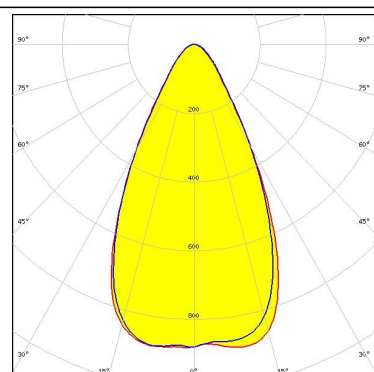
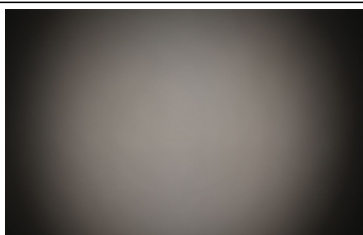
LED Vesta TW 13mm (25W) CSP
FWHM 56.0°
Efficiency 85 %
Peak intensity 0.8 cd/lm
LEDs/each optic 1
Light colour White
Required components:
C16142_HEKLA-SOCKET-K
Bender Wirth: 492 Typ L8



PHOTOMETRIC DATA (MEASURED):

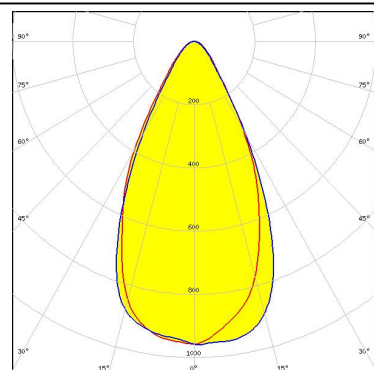
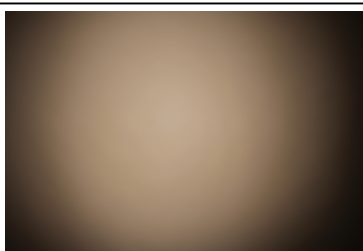


LED Vesta TW 9mm (12W) CSP
FWHM 55.0°
Efficiency 87 %
Peak intensity 0.9 cd/lm
LEDs/each optic 1
Light colour White
Required components:
C16142_HEKLA-SOCKET-K



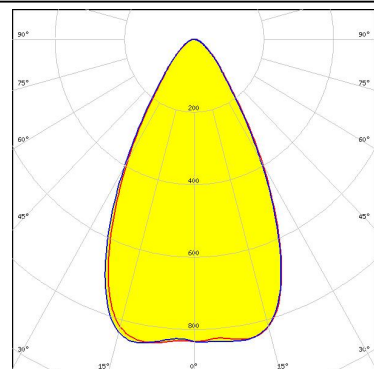
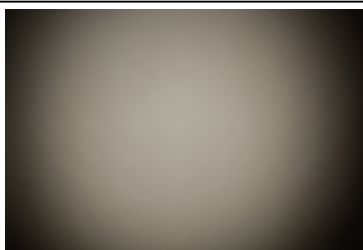
CITIZEN

LED CLC020 Series (Dim-To-Warm)
FWHM 53.0°
Efficiency 86 %
Peak intensity 1 cd/lm
LEDs/each optic 1
Light colour White
Required components:
C16142_HEKLA-SOCKET-K



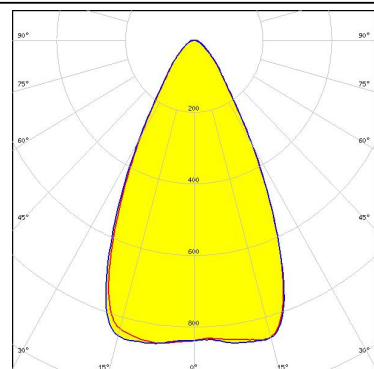
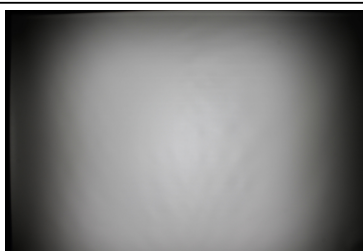
CITIZEN

LED CLL02x/CLU02x (LES10)
FWHM 58.0°
Efficiency 89 %
Peak intensity 0.9 cd/lm
LEDs/each optic 1
Light colour White
Required components:
F15255_HEKLA-SOCKET-C



CITIZEN

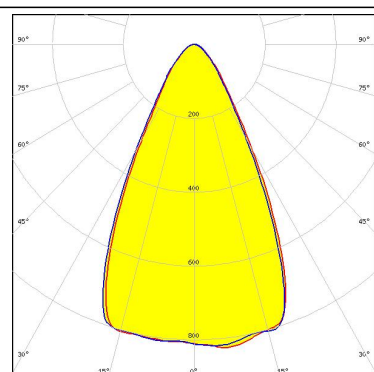
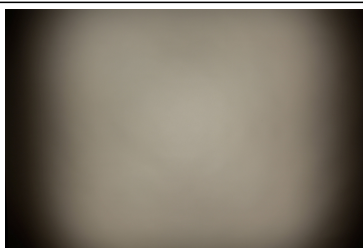
LED CLU700/701/702
FWHM 55.0 + 56.0°
Efficiency 90 %
Peak intensity 0.9 cd/lm
LEDs/each optic 1
Light colour White
Required components:
F15255_HEKLA-SOCKET-C



PHOTOMETRIC DATA (MEASURED):

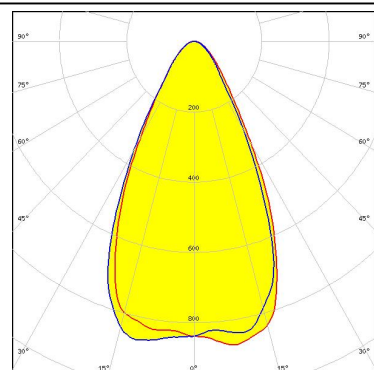
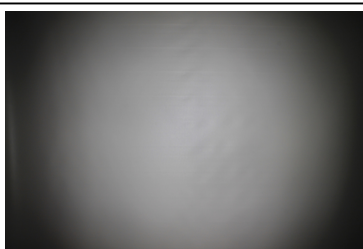
CITIZEN

LED CLU7A2 (LES 4.2mm)
 FWHM 55.0°
 Efficiency 90 %
 Peak intensity 0.9 cd/lm
 LEDs/each optic 1
 Light colour White
 Required components:
 F15255_HEKLA-SOCKET-C



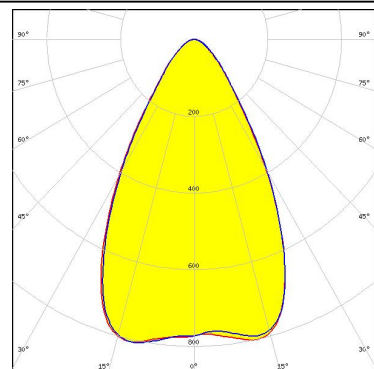
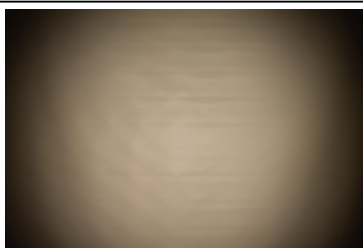
CITIZEN

LED LCN-C01B (Tunable White)
 FWHM 54.0°
 Efficiency 86 %
 Peak intensity 0.9 cd/lm
 LEDs/each optic 1
 Light colour White
 Required components:
 C16142_HEKLA-SOCKET-K
 Bender Wirth: 481 Typ L8



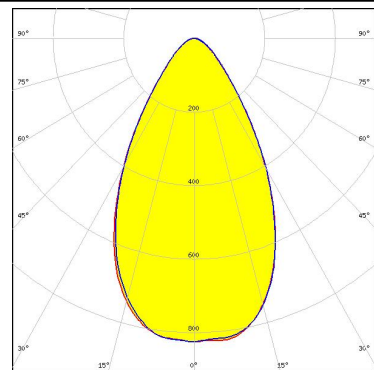
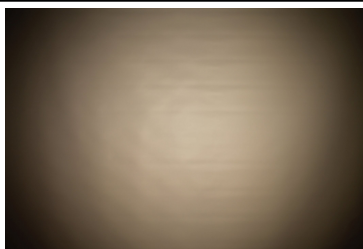
CREE

LED CMA1516
 FWHM 61.0°
 Efficiency 92 %
 Peak intensity 0.8 cd/lm
 LEDs/each optic 1
 Light colour White
 Required components:
 F15256_HEKLA-SOCKET-D



CREE

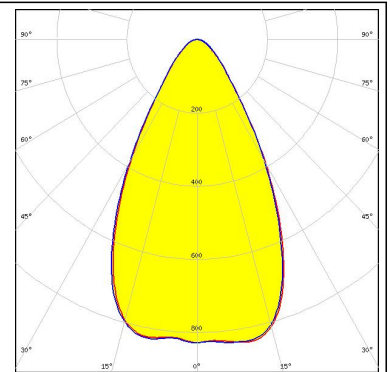
LED CMA1825
 FWHM 59.0°
 Efficiency 90 %
 Peak intensity 0.8 cd/lm
 LEDs/each optic 1
 Light colour White
 Required components:
 F15254_HEKLA-SOCKET-B



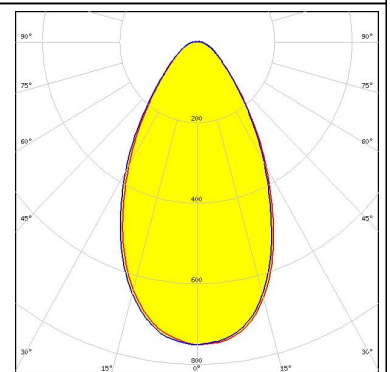
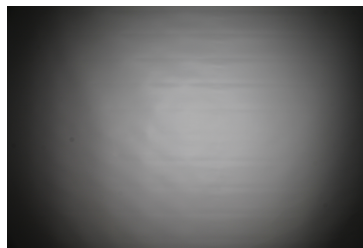
PHOTOMETRIC DATA (MEASURED):



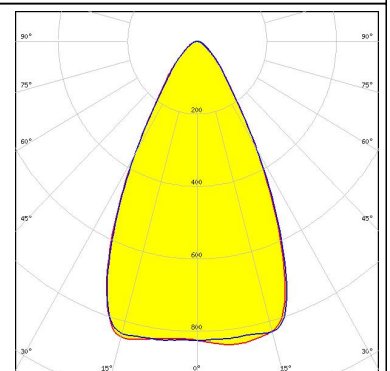
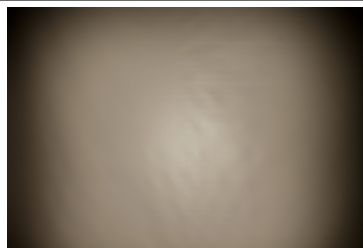
LED CMT14xx
FWHM 58.0°
Efficiency 91 %
Peak intensity 0.9 cd/lm
LEDs/each optic 1
Light colour White
Required components:
F15255_HEKLA-SOCKET-C
F15176_ANGELETTE-LENS



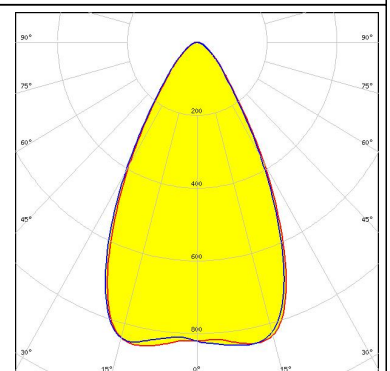
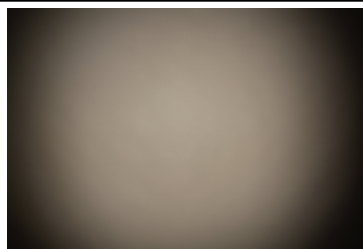
LED CMT19xx
FWHM 58.0°
Efficiency 88 %
Peak intensity 0.8 cd/lm
LEDs/each optic 1
Light colour White
Required components:
F15859_HEKLA-SOCKET-I



LED CXA/B 13xx
FWHM 57.0°
Efficiency 91 %
Peak intensity 0.9 cd/lm
LEDs/each optic 1
Light colour White
Required components:
F15956_HEKLA-SOCKET-J



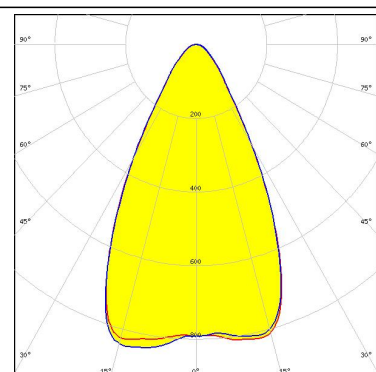
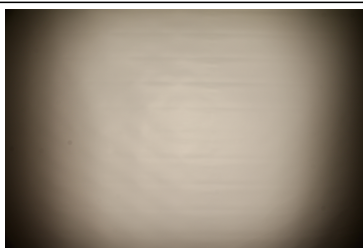
LED CXA/B 15xx
FWHM 59.0°
Efficiency 91 %
Peak intensity 0.9 cd/lm
LEDs/each optic 1
Light colour White
Required components:
F15256_HEKLA-SOCKET-D



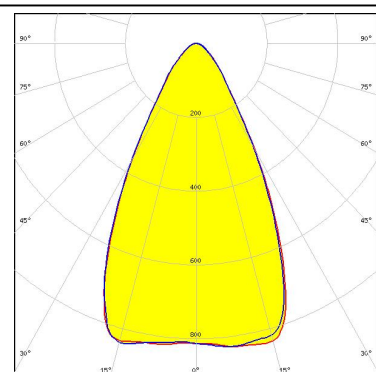
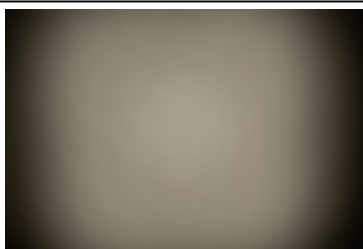
PHOTOMETRIC DATA (MEASURED):



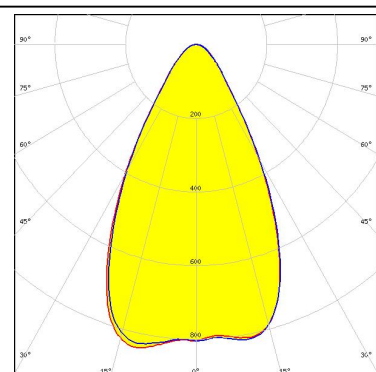
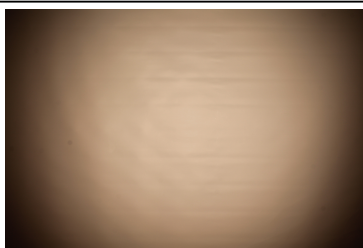
LED LUXEON CoB 1202HD
 FWHM 57.0 + 55.0°
 Efficiency 90 %
 Peak intensity 0.9 cd/lm
 LEDs/each optic 1
 Light colour White
 Required components:
 F15848_HEKLA-SOCKET-G



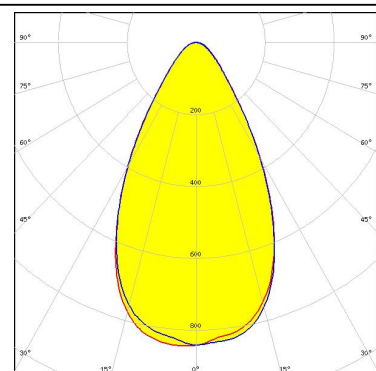
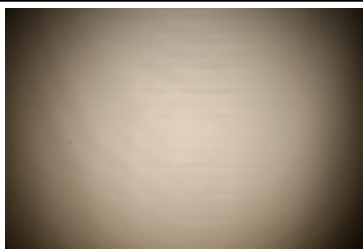
LED LUXEON CoB 1202s
 FWHM 57.0°
 Efficiency 91 %
 Peak intensity 0.9 cd/lm
 LEDs/each optic 1
 Light colour White
 Required components:
 F15848_HEKLA-SOCKET-G



LED LUXEON CoB 1204HD
 FWHM 57.3 + 57.5°
 Efficiency 90 %
 Peak intensity 0.8 cd/lm
 LEDs/each optic 1
 Light colour White
 Required components:
 F15858_HEKLA-SOCKET-H



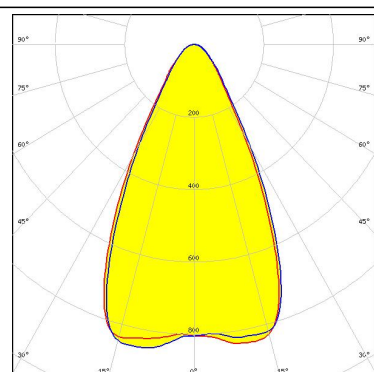
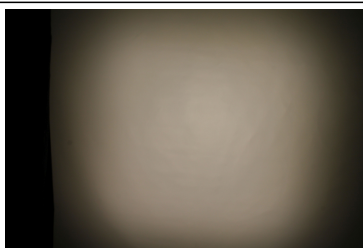
LED LUXEON CoB 1205HD
 FWHM 57.3 + 57.4°
 Efficiency 89 %
 Peak intensity 0.8 cd/lm
 LEDs/each optic 1
 Light colour White
 Required components:
 F15858_HEKLA-SOCKET-H



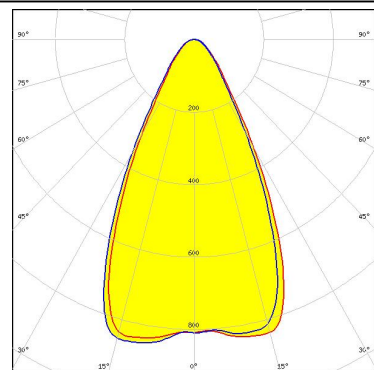
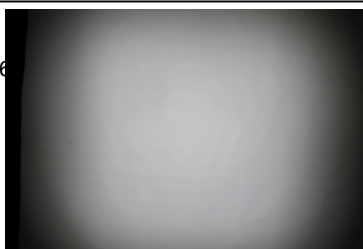
PHOTOMETRIC DATA (MEASURED):



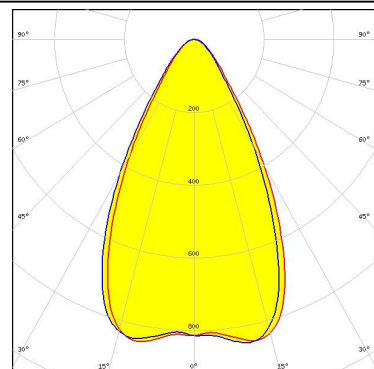
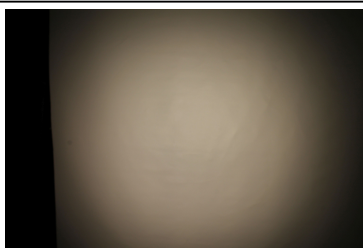
LED LUXEON CX Plus CoB - HD S01H4
 FWHM 55.0°
 Efficiency 91 %
 Peak intensity 0.9 cd/lm
 LEDs/each optic 1
 Light colour White
 Required components:
 Bender Wirth: 634c Hekla



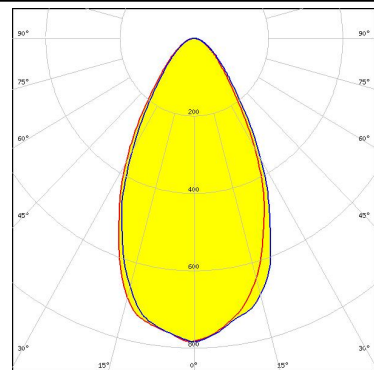
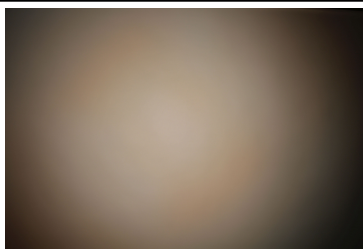
LED LUXEON CX Plus CoB - HD S01H6 / HD S02H6
 FWHM 55.0°
 Efficiency 91 %
 Peak intensity 0.9 cd/lm
 LEDs/each optic 1
 Light colour White
 Required components:
 Bender Wirth: 634c Hekla



LED LUXEON CX Plus CoB - HD S04H9
 FWHM 58.0°
 Efficiency 91 %
 Peak intensity 0.8 cd/lm
 LEDs/each optic 1
 Light colour White
 Required components:
 Bender Wirth: 634c Hekla



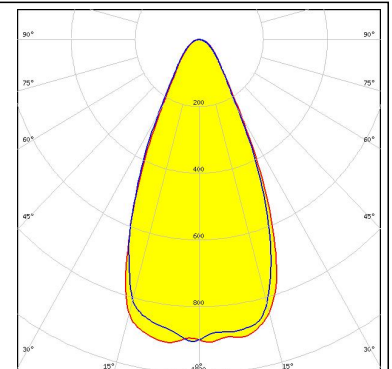
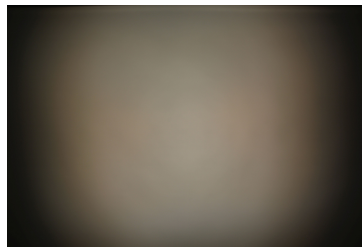
LED CDM-14 (Dim-To-Warm)
 FWHM 56.0°
 Efficiency 82 %
 Peak intensity 0.8 cd/lm
 LEDs/each optic 1
 Light colour White
 Required components:
 C16142_HEKLA-SOCKET-K
 Bender Wirth: 491 Typ L8



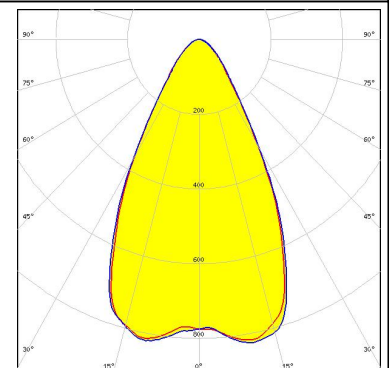
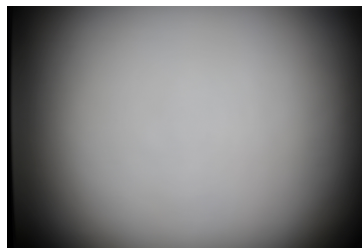
PHOTOMETRIC DATA (MEASURED):



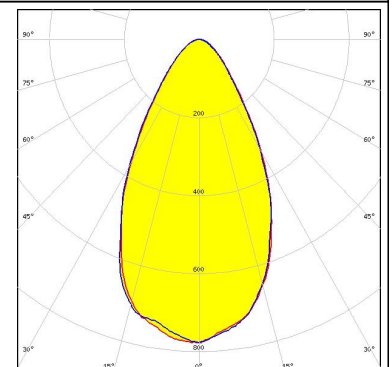
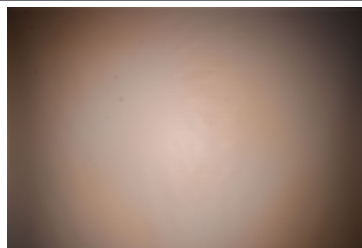
LED CDM-6 (Dim-To-Warm)
 FWHM 49.0°
 Efficiency 82 %
 Peak intensity 0.9 cd/lm
 LEDs/each optic 1
 Light colour White
 Required components:
 C16142_HEKLA-SOCKET-K
 Bender Wirth: 490 Typ L8



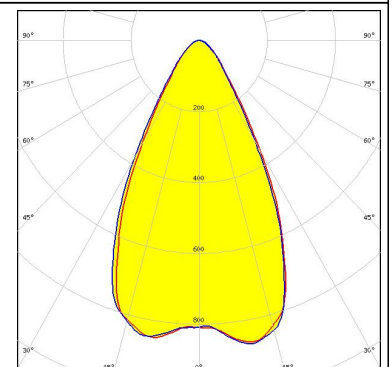
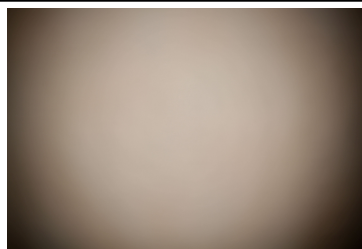
LED CDM-9 (Dim-To-Warm)
 FWHM 58.0°
 Efficiency 86 %
 Peak intensity 0.8 cd/lm
 LEDs/each optic 1
 Light colour White
 Required components:
 C16142_HEKLA-SOCKET-K
 Bender Wirth: 490 Typ L8



LED CTM-14 (Tunable White)
 FWHM 57.0°
 Efficiency 82 %
 Peak intensity 0.8 cd/lm
 LEDs/each optic 1
 Light colour White
 Required components:
 C16142_HEKLA-SOCKET-K
 Bender Wirth: 442 Typ L8



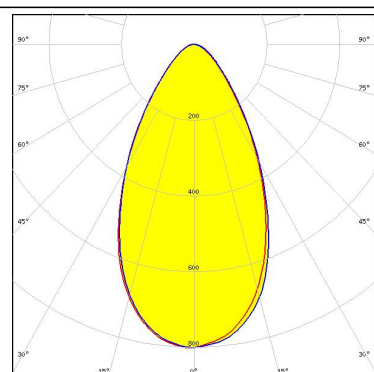
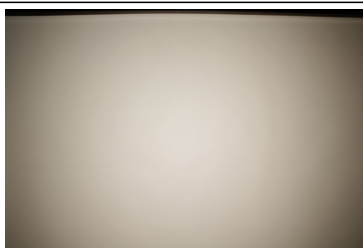
LED CTM-9 (Tunable White)
 FWHM 56.0°
 Efficiency 86 %
 Peak intensity 0.9 cd/lm
 LEDs/each optic 1
 Light colour White
 Required components:
 C16142_HEKLA-SOCKET-K
 Bender Wirth: 495 Typ L8



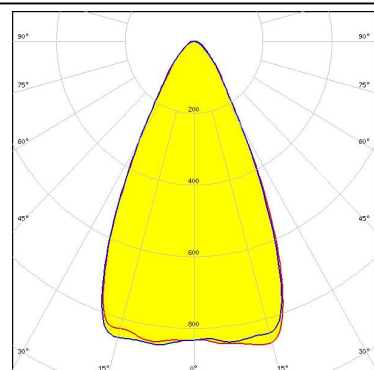
PHOTOMETRIC DATA (MEASURED):



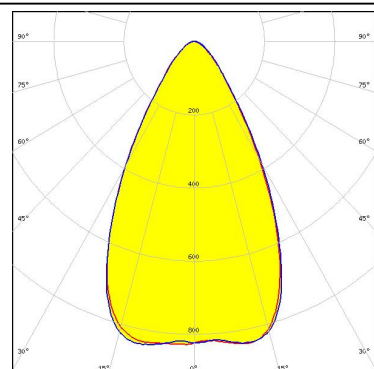
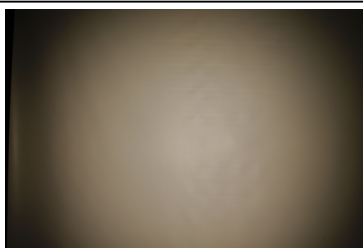
LED CxM-14 (19x19)
 FWHM 57.0°
 Efficiency 86 %
 Peak intensity 0.8 cd/lm
 LEDs/each optic 1
 Light colour White
 Required components:
 F15859_HEKLA-SOCKET-I



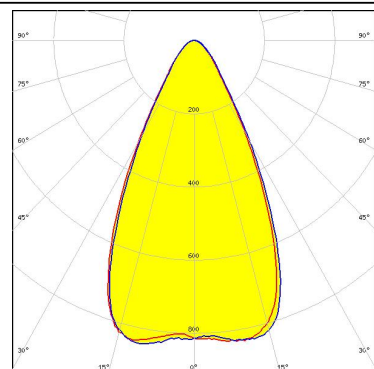
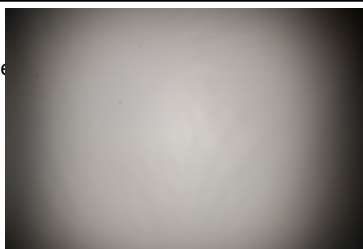
LED CXM-4
 FWHM 54.0°
 Efficiency 90 %
 Peak intensity 1 cd/lm
 LEDs/each optic 1
 Light colour White
 Required components:
 F15255_HEKLA-SOCKET-C



LED CxM-9 (13.5x13.5)
 FWHM 58.0°
 Efficiency 89 %
 Peak intensity 0.9 cd/lm
 LEDs/each optic 1
 Light colour White
 Required components:
 F15255_HEKLA-SOCKET-C



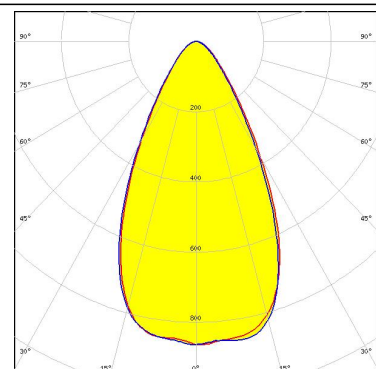
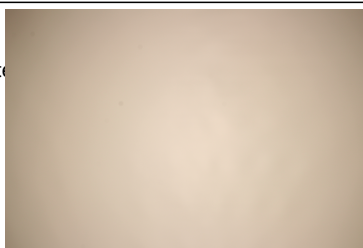
LED NJCWL024Z-V1MT: COB L-Type Tunable White
 FWHM 56.0°
 Efficiency 83 %
 Peak intensity 0.9 cd/lm
 LEDs/each optic 1
 Light colour White
 Required components:
 C16142_HEKLA-SOCKET-K
 Bender Wirth: 497 Typ L8



PHOTOMETRIC DATA (MEASURED):

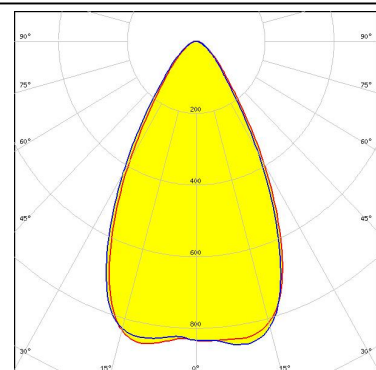
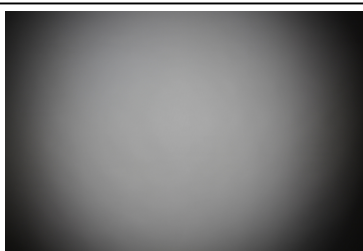


LED NVCWJ024Z-V1MT: COB J-Type Tunable White
 FWHM 55.0°
 Efficiency 86 %
 Peak intensity 0.9 cd/lm
 LEDs/each optic 1
 Light colour White
 Required components:
 C16142_HEKLA-SOCKET-K
 Bender Wirth: 498 Typ L8



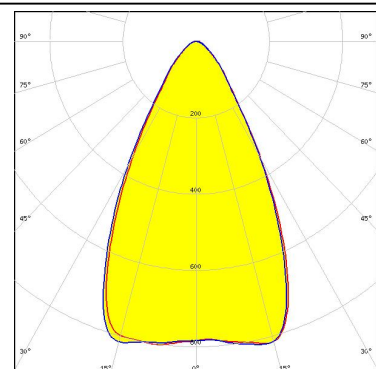
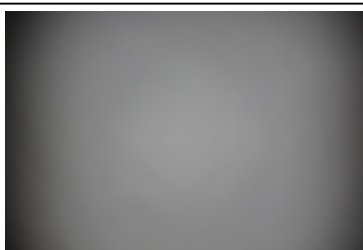
SAMSUNG

LED LC003D / LC006D / LC009D / LC013D
 FWHM 58.0°
 Efficiency 90 %
 Peak intensity 0.9 cd/lm
 LEDs/each optic 1
 Light colour White
 Required components:
 F15255_HEKLA-SOCKET-C



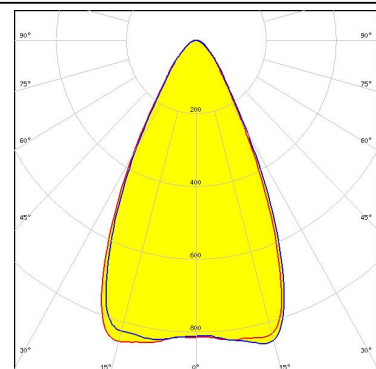
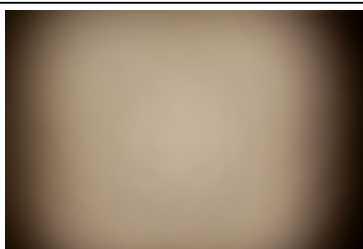
SAMSUNG

LED LC010C
 FWHM 58.0°
 Efficiency 90 %
 Peak intensity 0.9 cd/lm
 LEDs/each optic 1
 Light colour White
 Required components:
 F15848_HEKLA-SOCKET-G



SAMSUNG

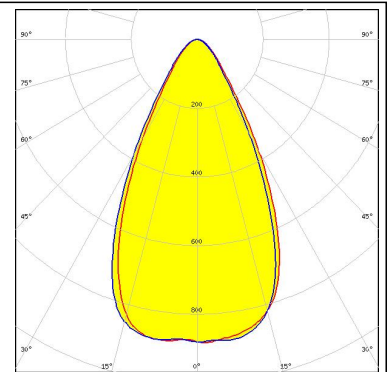
LED LC010C G2
 FWHM 55.0°
 Efficiency 89 %
 Peak intensity 0.9 cd/lm
 LEDs/each optic 1
 Light colour White
 Required components:
 F15255_HEKLA-SOCKET-C



PHOTOMETRIC DATA (MEASURED):

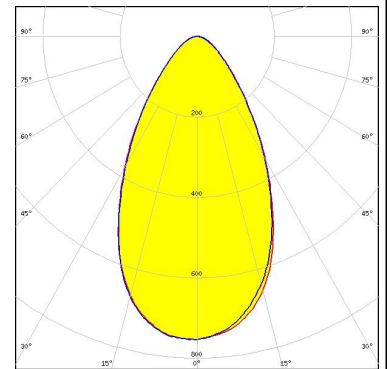
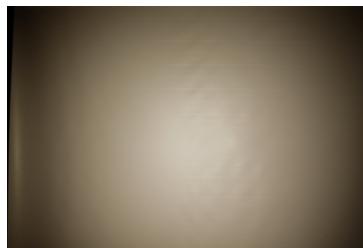
SAMSUNG

LED LC010T (Tunable White)
 FWHM 55.0°
 Efficiency 87 %
 Peak intensity 0.9 cd/lm
 LEDs/each optic 1
 Light colour Tunable White
 Required components:
 C16142_HEKLA-SOCKET-K
 Bender Wirth: 501 Typ L8



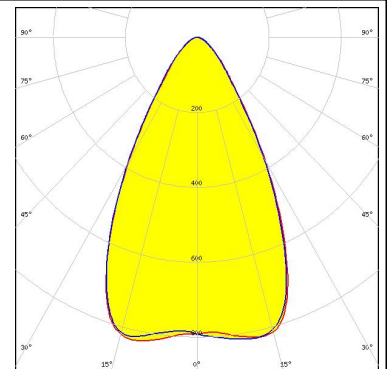
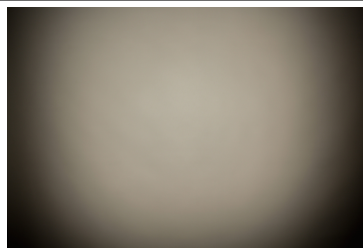
SAMSUNG

LED LC016D / LC019D / LC026D / LC033D
 FWHM 59.0 + 58.0°
 Efficiency 86 %
 Peak intensity 0.8 cd/lm
 LEDs/each optic 1
 Light colour White
 Required components:
 F15859_HEKLA-SOCKET-I



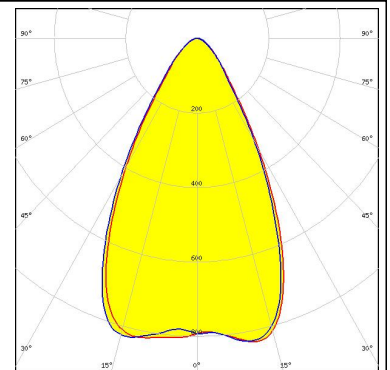
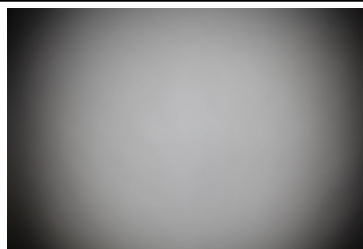
SAMSUNG

LED LC020C
 FWHM 59.0°
 Efficiency 90 %
 Peak intensity 0.8 cd/lm
 LEDs/each optic 1
 Light colour White
 Required components:
 F15848_HEKLA-SOCKET-G



SAMSUNG

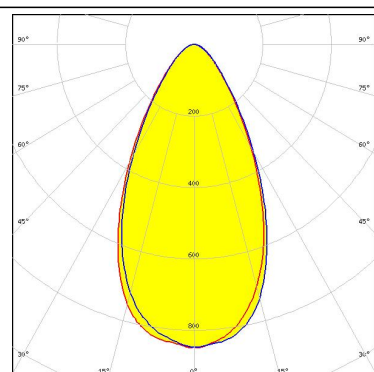
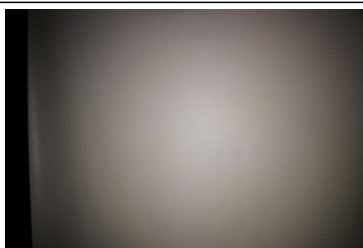
LED LC020C G2
 FWHM 58.0°
 Efficiency 88 %
 Peak intensity 0.8 cd/lm
 LEDs/each optic 1
 Light colour White
 Required components:
 F15859_HEKLA-SOCKET-I



PHOTOMETRIC DATA (MEASURED):

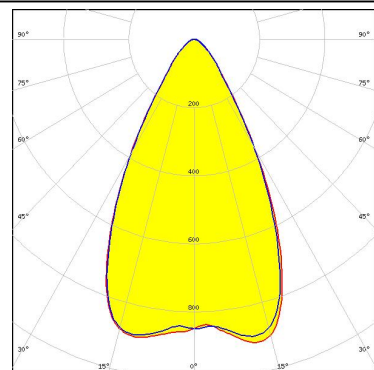
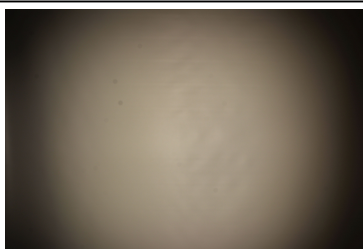
SAMSUNG

LED LC020T (Tunable white)
 FWHM 55.0°
 Efficiency 86 %
 Peak intensity 0.9 cd/lm
 LEDs/each optic 1
 Light colour Tunable White
 Required components:
 C16142_HEKLA-SOCKET-K
 Bender Wirth: 501 Typ L8



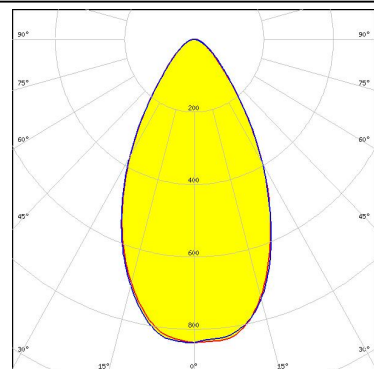
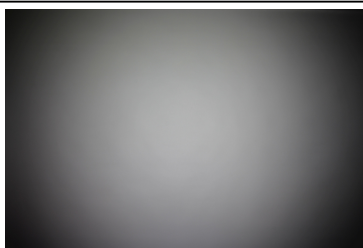
TRIDONIC

LED SLE G7 LES09
 FWHM 58.0°
 Efficiency 90 %
 Peak intensity 0.9 cd/lm
 LEDs/each optic 1
 Light colour White
 Required components:
 F15255_HEKLA-SOCKET-C



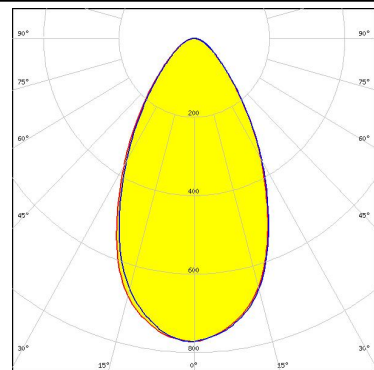
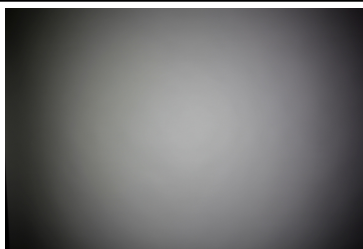
TRIDONIC

LED SLE G7 LES13
 FWHM 57.0°
 Efficiency 87 %
 Peak intensity 0.8 cd/lm
 LEDs/each optic 1
 Light colour White
 Required components:
 F15859_HEKLA-SOCKET-I



TRIDONIC

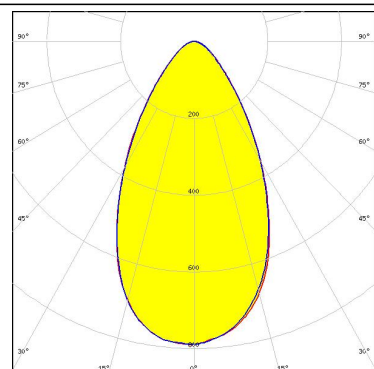
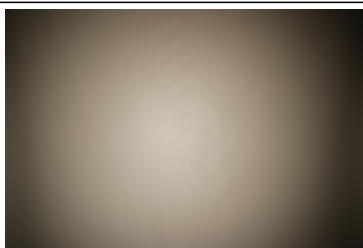
LED SLE G7 LES15
 FWHM 58.0°
 Efficiency 87 %
 Peak intensity 0.8 cd/lm
 LEDs/each optic 1
 Light colour White
 Required components:
 F15859_HEKLA-SOCKET-I



PHOTOMETRIC DATA (MEASURED):

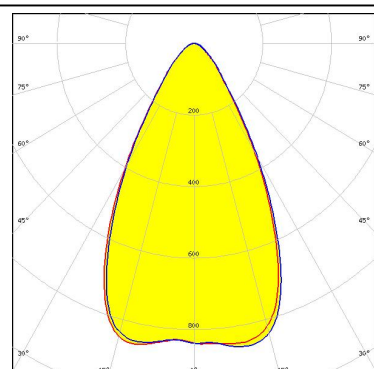
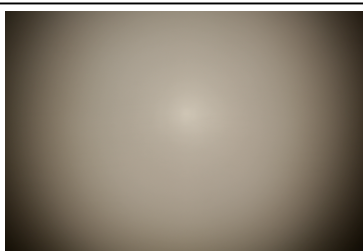
XICATO

LED XOB 14.5 mm
FWHM 57.0°
Efficiency 87 %
Peak intensity 0.8 cd/lm
LEDs/each optic 1
Light colour White
Required components:
F15859_HEKLA-SOCKET-I



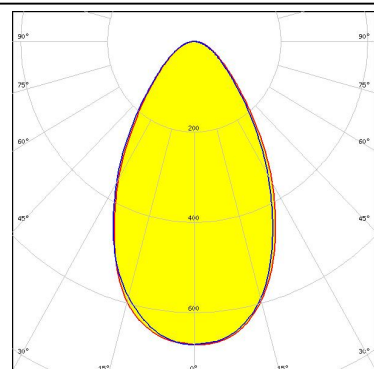
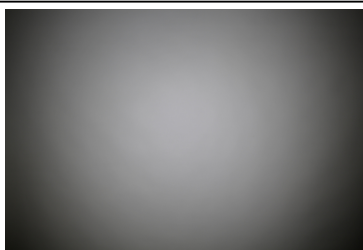
XICATO

LED XOB 9.8 mm
FWHM 58.0°
Efficiency 90 %
Peak intensity 0.9 cd/lm
LEDs/each optic 1
Light colour White
Required components:
F15255_HEKLA-SOCKET-C



XICATO

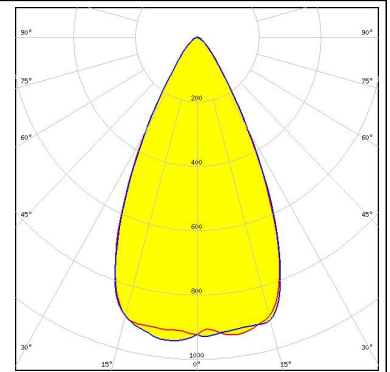
LED XTM - 19mm LES
FWHM 62.0°
Efficiency 86 %
Peak intensity 0.7 cd/lm
LEDs/each optic 1
Light colour White
Required components:
C16058_XTM-ADAPTER-50-C



PHOTOMETRIC DATA (SIMULATED):



LED COB T-Type
FWHM 54.0°
Efficiency 86 %
Peak intensity 1 cd/lm
LEDs/each optic 1
Light colour White
Required components:
F15848_HEKLA-SOCKET-G



GENERAL INFORMATION:

NOTE: The typical beam angle will be changed by different color, chip size and chip position tolerance. The typical total beam angle is the full angle measured where the luminous intensity is half of the peak value.

Due to use of high power COB's with this product, special attention to proper thermal design is highly recommended. LEDiL has no liability for direct, indirect or consecutive damages arising from the LEDiL products being used outside of the recommended temperature range.

MATERIALS:

As part of our continuous research and improvement processes, and to ensure the best possible quality and availability of our products, LEDiL reserves the right to change material grades without notice.

PRODUCT DATA USER AGREEMENT AND DISCLAIMER:

The measured data in the provided downloadable LEDiL Product Datasheets and Mechanical 2D-Drawings is rounded and provided as reference for planning. LEDiL Oy's optical specifications have been verified by conducting performance testing of the products in accordance with the company's quality system. The reported data are averaged results of multiple measurements with typical variation. LEDiL Oy reserves the right to without prior notification make changes and improvements to its products.

LEDiL Oy assumes neither warranty, nor guarantee nor any other liability of any kind for the contents and correctness of the provided data. The provided data has been generated with highest diligence but the provided data may in reality not represent the complete possible variation range of all intrinsic parameters. Therefore, in certain cases a deviation from the provided data could occur.

LEDiL Oy reserves the right to undertake technical changes of its products without further notification which could lead to changes in the provided data. LEDiL Oy assumes no liability of any kind for the possible deviation from any provided data or any other damage resulting from the usage of the provided data.

The user agrees to this disclaimer and user agreement with the download or usage of the provided files.

LEDiL Oy

Joensuunkatu 13
FI-24240 SALO
Finland

LEDiL Inc.

228 West Page Street
Suite D
Sycamore IL 60178
USA

Local sales and technical support

[www.ledil.com/
where_to_buy](http://www.ledil.com/where_to_buy)

Shipping locations

Salo, Finland
Hong Kong, China

Distribution Partners

[www.ledil.com/
where_to_buy](http://www.ledil.com/where_to_buy)