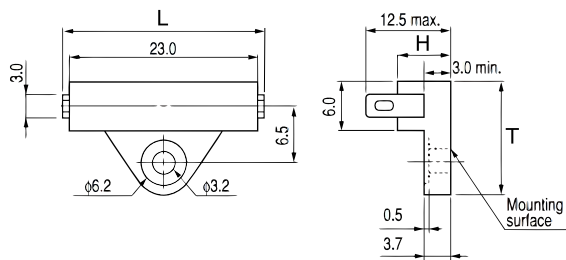


**KEMET Part Number: OHD3-125M**  
(USEO3125M00000)

KEMET, OHD, Thermal Reed Switch, Radial Tab, 5C Temperature Accuracy, High Reliability, High-Speed Response, Long Operational Life, Excellent Environmental Durability, High Temperature Accuracy, 125°C, Make



**General Information**

|                     |   |
|---------------------|---|
| <b>Series:</b>      | OHD   |
| <b>Type:</b>        | Thermal Reed Switch   |
| <b>Style:</b>       | Radial Tab  |
| <b>Description:</b> | Thermal Guard   |
| <b>Features:</b>    | High Reliability, High-Speed Response, Long Operational Life, Excellent Environmental Durability, High Temperature Accuracy |
| <b>Lead:</b>        | Tab Leads   |
| <b>RoHS:</b>        | Yes   |

**Dimensions**

|          |        |
|----------|--------|
| <b>L</b> | 27mm   |
| <b>H</b> | 6mm    |
| <b>T</b> | 13.5mm |

**Packaging Specifications**

|                            |           |
|----------------------------|-----------|
| <b>Packaging:</b>          | Tray, Box |
| <b>Packaging Quantity:</b> | 1000      |
| <b>Weight:</b>             | 2.8 g     |

**Specifications**

|                                     |   |
|-------------------------------------|---|
| <b>Switching Temperature:</b>       | 125C +/-5C  |
| <b>Temperature Range:</b>           | -20/+150°C  |
| <b>Contact Type:</b>                | Make  |
| <b>Voltage DC:</b>                  | 110 VDC MAX (Opening/Closing), 2500 VAC/1 minute or 3000 VAC/1 second       |
| <b>Voltage AC:</b>                  | 110 VAC MAX (Opening/Closing)   |
| <b>Current:</b>                     | 0.3 Amps AC/DC MAX (Opening/Closing), 0.1 mAmps MIN (1VDC, Opening/Closing) |
| <b>Resistance:</b>                  | 150 mOhms MAX (Contact Resistance)  |
| <b>Max Opening/Closing Power:</b>   | 6 W (AC/DC)   |
| <b>Max Opening/Closing Voltage:</b> | 110 V (AC/DC)   |
| <b>Differential Temperature:</b>    | 10C Maximum   |