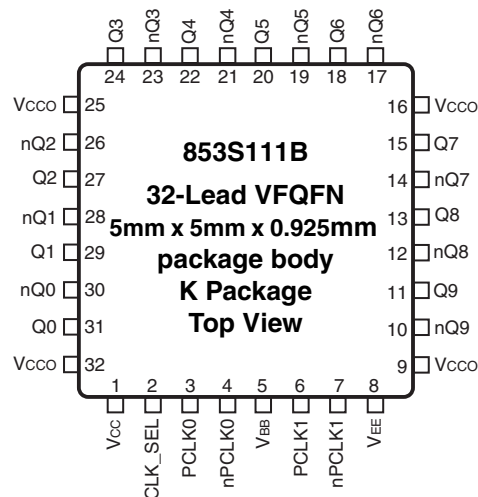
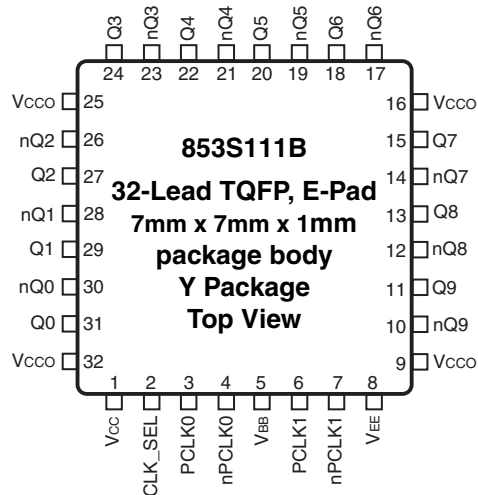


General Description

The 853S111B is a low skew, high performance 1-to-10 Differential-to-2.5V/ 3.3V LVPECL/ECL Fanout Buffer. The 853S111B is characterized to operate from either a 2.5V or a 3.3V power supply. Guaranteed output and part-to-part skew characteristics make the 853S111B ideal for those clock distribution applications demanding well defined performance and repeatability.

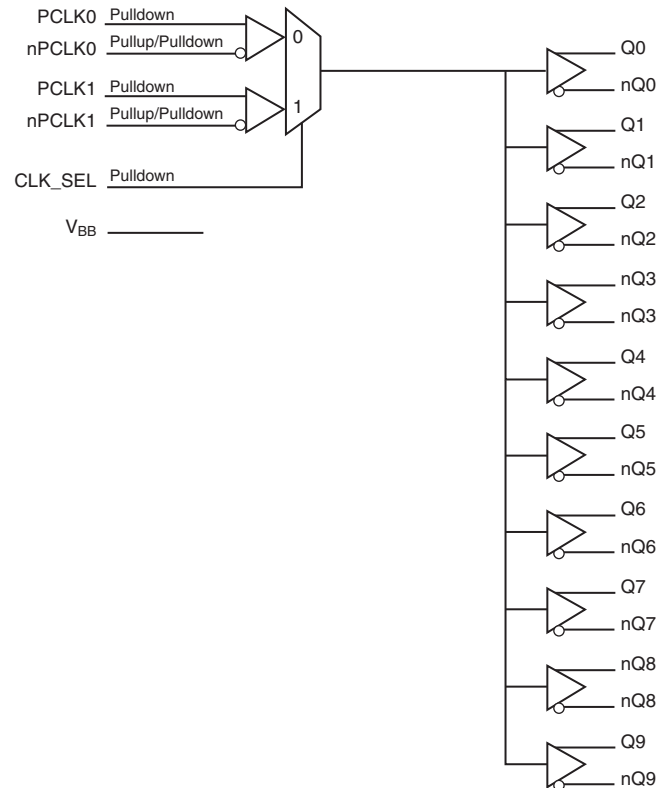
Pin Assignments



Features

- Ten differential 2.5V, 3.3V LVPECL/ECL outputs
- Two selectable differential input pairs
- PCLKx, nPCLKx pairs can accept the following differential input levels: LVPECL, LVDS, SSTL, CML
- Maximum output frequency: 2.5GHz
- Translates any single-ended input signal to 3.3V LVPECL levels with resistor bias on nPCLK input
- Output skew: 50ps (maximum)
- Part-to-part skew: 150ps (maximum)
- Propagation delay: 645ps (maximum)
- Additive Phase Jitter, RMS: 0.03ps (typical)
- LVPECL mode operating voltage supply range: $V_{CC} = 2.375V$ to $3.8V$, $V_{EE} = 0V$
- ECL mode operating voltage supply range: $V_{CC} = 0V$, $V_{EE} = -3.8V$ to $-2.375V$
- $-40^{\circ}C$ to $85^{\circ}C$ ambient operating temperature
- Available lead-free (RoHS 6) packaging

Block Diagram



Pin Descriptions and Characteristics

Table 1. Pin Descriptions

| Number | Name | Type | | Description |
|---------------|------------------|--------|---------------------|--|
| 1 | V _{CC} | Power | | Positive supply pin. |
| 2 | CLK_SEL | Input | Pulldown | Clock select input. When HIGH, selects PCLK1/nPCLK1 inputs. When LOW, selects PCLK0/nPCLK0 inputs. LVPECL interface levels. Also accepts standard LVCMOS input levels. |
| 3 | PCLK0 | Input | Pulldown | Non-inverting differential LVPECL clock input. |
| 4 | nPCLK0 | Input | Pullup/ Pulldown | Inverting differential LVPECL clock input. V _{CC} /2 default when left floating. |
| 5 | V _{BB} | Output | | Bias voltage to be connected for single-ended applications. |
| 6 | PCLK1 | Input | Pulldown | Non-inverting differential LVPECL clock input. |
| 7 | nPCLK1 | Input | Pullup/ Pulldown | Inverting differential LVPECL clock input. V _{CC} /2 default when left floating. |
| 8 | V _{EE} | Power | | Negative supply pin. |
| 9, 16, 25, 32 | V _{CCO} | Power | | Output supply pins. |
| 10, 11 | nQ9, Q9 | Output | | Differential output pair. LVPECL/ECL interface levels. |
| 12, 13 | nQ8, Q8 | Output | | Differential output pair. LVPECL/ECL interface levels. |
| 14, 15 | nQ7, Q7 | Output | | Differential output pair. LVPECL/ECL interface levels. |
| 17, 18 | nQ6, Q6 | Output | | Differential output pair. LVPECL/ECL interface levels. |
| 19, 20 | nQ5, Q5 | Output | | Differential output pair. LVPECL/ECL interface levels. |
| 21, 22 | nQ4, Q4 | Output | | Differential output pair. LVPECL/ECL interface levels. |
| 23, 24 | nQ3, Q3 | Output | | Differential output pair. LVPECL/ECL interface levels. |
| 26, 27 | nQ2, Q2 | Output | | Differential output pair. LVPECL/ECL interface levels. |
| 28, 29 | nQ1, Q1 | Output | | Differential output pair. LVPECL/ECL interface levels. |
| 30, 31 | nQ0, Q0 | Output | | Differential output pair. LVPECL/ECL interface levels. |

NOTE: *Pullup* and *Pulldown* refer to internal input resistors. See Table 2, *Pin Characteristics*, for typical values.

Table 2. Pin Characteristics

| Symbol | Parameter | Test Conditions | Minimum | Typical | Maximum | Units |
|-----------------------|----------------------------|-----------------|---------|---------|---------|-------|
| R _{PULLDOWN} | Input Pulldown Resistor | | | 75 | | kΩ |
| R _{VCC/2} | RPullup/Pulldown Resistors | | | 50 | | kΩ |

Function Tables

Table 3A. Clock Input Function Table

| Inputs | | Outputs | | Input to Output Mode | Polarity |
|----------------|------------------|---------|---------|------------------------------|---------------|
| PCLK0 or PCLK1 | nPCLK0 or nPCLK1 | Q0:Q9 | nQ0:nQ9 | | |
| 0 | 1 | LOW | HIGH | Differential to Differential | Non-Inverting |
| 1 | 0 | HIGH | LOW | Differential to Differential | Non-Inverting |
| 0 | Biased; NOTE 1 | LOW | HIGH | Single-Ended to Differential | Non-Inverting |
| 1 | Biased; NOTE 1 | HIGH | LOW | Single-Ended to Differential | Non-Inverting |
| Biased; NOTE 1 | 0 | HIGH | LOW | Single-Ended to Differential | Inverting |
| Biased; NOTE 1 | 1 | LOW | HIGH | Single-Ended to Differential | Inverting |

NOTE 1: Please refer to the Applications Information, "Wiring the Differential Input to Accept Single Ended Levels".

Table 3B. Control Input Function Table

| Inputs | |
|---------|-----------------|
| CLK_SEL | Selected Source |
| 0 | PCLK0, nPCLK0 |
| 1 | PCLK1, nPCLK1 |

Absolute Maximum Ratings

NOTE: Stresses beyond those listed under *Absolute Maximum Ratings* may cause permanent damage to the device. These ratings are stress specifications only. Functional operation of the product at these conditions or any conditions beyond those listed in the *DC Characteristics* or *AC Characteristics* is not implied. Exposure to absolute maximum rating conditions for extended periods may affect product reliability.

| Item | Rating |
|---|--------------------------------------|
| Supply Voltage, V_{CC} | 4.6V (LVPECL mode, $V_{EE} = 0V$) |
| Negative Supply Voltage, V_{EE} | -4.6V (ECL mode, $V_{CC} = 0V$) |
| Inputs, V_I (LVPECL mode) | -0.5V to $V_{CC} + 0.5V$ |
| Inputs, V_I (ECL mode) | 0.5V to $V_{EE} - 0.5V$ |
| Outputs, I_O Continuous Current Surge Current | 50mA 100mA |
| V_{BB} Sink/Source, I_{BB} | $\pm 0.5mA$ |
| Operating Temperature Range, T_A | -40°C to +85°C |
| Package Thermal Impedance, θ_{JA} 32-Lead TQFP, Epad 32-Lead VFQFN | 36.2°C/W (0 mps) 42.7°C/W (0 mps) |
| Storage Temperature, T_{STG} | -65°C to 150°C |

DC Electrical Characteristics

Table 4A. Power Supply DC Characteristics, $V_{CC} = V_{CCO} = 2.375V$ to $3.8V$; $V_{EE} = 0V$, $T_A = -40^\circ C$ to $85^\circ C$

| Symbol | Parameter | Test Conditions | Minimum | Typical | Maximum | Units |
|-----------|-------------------------|-----------------|---------|---------|---------|-------|
| V_{CC} | Positive Supply Voltage | | 2.375 | 3.3 | 3.8 | V |
| V_{CCO} | Output Supply Voltage | | 2.375 | 3.3 | 3.8 | V |
| I_{EE} | Power Supply Current | | | | 124 | mA |

Table 4B. LVPECL DC Characteristics, $V_{CC} = V_{CCO} = 3.3V$; $V_{EE} = 0V$, $T_A = -40^{\circ}C$ to $85^{\circ}C$

| Symbol | Parameter | | -40°C | | | 25°C | | | 85°C | | | Units |
|------------|--|--------------------------------|------------------|-------|------------------|------------------|-------|------------------|------------------|-------|------------------|---------|
| | | | Min | Typ | Max | Min | Typ | Max | Min | Typ | Max | |
| V_{OH} | Output High Voltage; NOTE 1 | | 2.175 | 2.275 | 2.445 | 2.225 | 2.295 | 2.445 | 2.215 | 2.33 | 2.410 | V |
| V_{OL} | Output Low Voltage; NOTE 1 | | 1.405 | 1.545 | 1.70 | 1.375 | 1.52 | 1.645 | 1.355 | 1.535 | 1.63 | V |
| V_{IH} | Input High Voltage (Single-ended) | | 2.075 | | 2.36 | 2.075 | | 2.36 | 2.075 | | 2.36 | V |
| V_{IL} | Input Low Voltage (Single-ended) | | 1.43 | | 1.765 | 1.43 | | 1.765 | 1.43 | | 1.765 | V |
| V_{BB} | Output Voltage Reference; NOTE 2 | | 1.86 | | 1.98 | 1.86 | | 1.98 | 1.86 | | 1.98 | V |
| V_{PP} | Peak-to-Peak Input Voltage; NOTE 3 | | 150 | 800 | 1300 | 150 | 800 | 1200 | 150 | 800 | 1200 | mV |
| V_{CMR1} | Input High Voltage Common Mode Range; NOTE 3, 4 | | 1.3 | | 3.3 | 1.2 | | 3.3 | 1.2 | | 3.3 | V |
| V_{CMR2} | Input Voltage Common Mode Range referenced to Cross-point; NOTE 3, 5 | | 1.3 - $V_{PP}/2$ | | 3.3 - $V_{PP}/2$ | 1.2 - $V_{PP}/2$ | | 3.3 - $V_{PP}/2$ | 1.2 - $V_{PP}/2$ | | 3.3 - $V_{PP}/2$ | V |
| I_{IH} | Input High Current | PCLK0, PCLK1 nPCLK0, nPCLK1 | | | 200 | | | 200 | | | 200 | μA |
| I_{IL} | Input Low Current | PCLK0, PCLK1 | -10 | | | -10 | | | -10 | | | μA |
| | | nPCLK0, nPCLK1 | -200 | | | -200 | | | -200 | | | μA |

NOTE: Input and output parameters vary 1:1 with V_{CC} . V_{EE} can vary +0.925V to -0.5V.

NOTE 1: Outputs terminated with 50Ω to $V_{CCO} - 2V$.

NOTE 2: Single-ended input operation is limited. $V_{CC} \geq 3V$ in LVPECL mode.

NOTE 3: V_{IL} should not be less than $V_{EE} - 0.3V$, V_{IH} should not be greater than V_{CC} .

NOTE 4: Common mode voltage is defined as V_{IH} .

NOTE 5: Common mode voltage is defined as $V_{CROSS-POINT}$.

Table 4C. LVPECL DC Characteristics, $V_{CC} = V_{CCO} = 2.5V$; $V_{EE} = 0V$, $T_A = -40^{\circ}C$ to $85^{\circ}C$

| Symbol | Parameter | | -40°C | | | 25°C | | | 85°C | | | Units |
|------------|--|--------------------------------|------------------|-------|------------------|------------------|-------|------------------|------------------|-------|------------------|---------|
| | | | Min | Typ | Max | Min | Typ | Max | Min | Typ | Max | |
| V_{OH} | Output High Voltage; NOTE 1 | | 1.375 | 1.475 | 1.645 | 1.425 | 1.495 | 1.645 | 1.415 | 1.53 | 1.61 | V |
| V_{OL} | Output Low Voltage; NOTE 1 | | 0.605 | 0.745 | 0.90 | 0.575 | 0.72 | 0.845 | 0.555 | 0.735 | 0.83 | V |
| V_{IH} | Input High Voltage (Single-ended) | | 1.275 | | 1.56 | 1.275 | | 1.56 | 1.275 | | 1.56 | V |
| V_{IL} | Input Low Voltage (Single-ended) | | 0.63 | | 0.965 | 0.63 | | 0.965 | 0.63 | | 0.965 | V |
| V_{BB} | Output Voltage Reference | | 0.87 | | 1.34 | 0.87 | | 1.34 | 0.87 | | 1.34 | V |
| V_{PP} | Peak-to-Peak Input Voltage; NOTE 2 | | 150 | 800 | 1300 | 150 | 800 | 1200 | 150 | 800 | 1200 | mV |
| V_{CMR1} | Input High Voltage Common Mode Range; NOTE 2, 3 | | 1.3 | | 2.5 | 1.2 | | 2.5 | 1.2 | | 2.5 | V |
| V_{CMR2} | Input Voltage Common Mode Range referenced to Cross-point; NOTE 2, 4 | | 1.3 - $V_{PP}/2$ | | 2.5 - $V_{PP}/2$ | 1.2 - $V_{PP}/2$ | | 2.5 - $V_{PP}/2$ | 1.2 - $V_{PP}/2$ | | 2.5 - $V_{PP}/2$ | V |
| I_{IH} | Input High Current | PCLK0, PCLK1 nPCLK0, nPCLK1 | | | 200 | | | 200 | | | 200 | μA |
| I_{IL} | Input Low Current | PCLK0, PCLK1 | -10 | | | -10 | | | -10 | | | μA |
| | | nPCLK0, nPCLK1 | -200 | | | -200 | | | -200 | | | μA |

NOTE: Input and output parameters vary 1:1 with V_{CC} . V_{EE} can vary +0.925V to -0.5V.

NOTE 1: Outputs terminated with 50Ω to $V_{CCO} - 2V$.

NOTE 2: V_{IL} should not be less than $V_{EE} - 0.3V$, V_{IH} should not be greater than V_{CC} .

NOTE 3: Common mode voltage is defined as V_{IH} .

NOTE 4: Common mode voltage is defined as $V_{CROSS-POINT}$.

Table 4D. ECL DC Characteristics, $V_{CC} = 0V$; $V_{EE} = -3.8V$ to $-2.375V$, $T_A = -40^{\circ}C$ to $85^{\circ}C$

| Symbol | Parameter | | -40°C | | | 25°C | | | 85°C | | | Units |
|-----------|---|--------------------------------|--------------|--------|--------|--------------|--------|--------|--------------|--------|--------|---------|
| | | | Min | Typ | Max | Min | Typ | Max | Min | Typ | Max | |
| V_{OH} | Output High Voltage; NOTE 1 | | -1.125 | -1.025 | -0.855 | -1.075 | -1.005 | -0.855 | -1.085 | -0.97 | -0.890 | V |
| V_{OL} | Output Low Voltage; NOTE 1 | | -1.895 | -1.755 | -1.60 | -1.925 | -1.78 | -1.655 | -1.945 | -1.765 | -1.67 | V |
| V_{IH} | Input High Voltage (Single-ended) | | -1.225 | | -0.94 | -1.225 | | -0.94 | -1.225 | | -0.94 | V |
| V_{IL} | Input Low Voltage (Single-ended) | | -1.87 | | -1.535 | -1.87 | | -1.535 | -1.87 | | -1.535 | V |
| V_{BB} | Output Voltage Reference; NOTE 2 | | -1.44 | | -1.32 | -1.44 | | -1.32 | -1.44 | | -1.32 | V |
| V_{PP} | Peak-to-Peak Input Voltage; NOTE 3 | | 150 | 800 | 1300 | 150 | 800 | 1200 | 150 | 800 | 1200 | mV |
| V_{CMR} | Input High Voltage Common Mode Range; NOTE 3, 4 | | $V_{EE}+1.3$ | | 0 | $V_{EE}+1.2$ | | 0 | $V_{EE}+1.2$ | | 0 | V |
| I_{IH} | Input High Current | PCLK0, PCLK1 nPCLK0, nPCLK1 | | | 200 | | | 200 | | | 200 | μA |
| I_{IL} | Input Low Current | PCLK0, PCLK1 | -10 | | | -10 | | | -10 | | | μA |
| | | nPCLK0, nPCLK1 | -200 | | | -200 | | | -200 | | | μA |

NOTE: Input and output parameters vary 1:1 with V_{CC} . V_{EE} can vary +0.925V to -0.5V.

NOTE 1: Outputs terminated with 50Ω to $V_{CCO} - 2V$.

NOTE 2: Single-ended input operation is limited. $V_{CC} \geq 3V$ in LVPECL mode.

NOTE 3: V_{IL} should not be less than $V_{EE} - 0.3V$.

NOTE 4: Common mode voltage is defined as V_{IH} .

AC Electrical Characteristics

Table 5. AC Characteristics, $V_{CC} = V_{CCO} = -3.8V$ to $-2.375V$ or , $V_{CC} = V_{CCO} = 2.375V$ to $3.8V$; $V_{EE} = 0V$, $T_A = -40^{\circ}C$ to $85^{\circ}C$

| Symbol | Parameter | | -40°C | | | 25°C | | | 85°C | | | Units |
|--------------|--|------------|-------|------|------|------|------|------|------|------|------|-------|
| | | | Min | Typ | Max | Min | Typ | Max | Min | Typ | Max | |
| f_{OUT} | Output Frequency | | | | 2.5 | | | 2.5 | | | 2.5 | GHz |
| t_{PD} | Propagation Delay; NOTE 1 | | 375 | 475 | 580 | 395 | 495 | 610 | 425 | 530 | 645 | ps |
| $t_{sk(o)}$ | Output Skew; NOTE 2, 4 | | | 30 | 50 | | 30 | 50 | | 30 | 50 | ps |
| $t_{sk(pp)}$ | Part-to-Part Skew; NOTE 3, 4 | | | 85 | 150 | | 85 | 150 | | 85 | 150 | ps |
| τ_{jit} | Buffer Additive Phase Jitter, RMS; refer to Additive Phase Jitter Section | | | 0.03 | 0.13 | | 0.03 | 0.13 | | 0.03 | 0.13 | ps |
| t_R / t_F | Output Rise/Fall Time | 20% to 80% | 75 | 150 | 220 | 80 | 150 | 215 | 78 | 150 | 235 | ps |

NOTE: Electrical parameters are guaranteed over the specified ambient operating temperature range, which is established when the device is mounted in a test socket with maintained transverse airflow greater than 500 lfpm. The device will meet specifications after thermal equilibrium has been reached under these conditions.

NOTE: All parameters are measured at $f \leq 1GHz$, unless otherwise noted.

NOTE 1: Measured from the differential input crossing point to the differential output crossing point.

NOTE 2: Defined as skew between outputs at the same supply voltage and with equal load conditions. Measured at the output differential cross points.

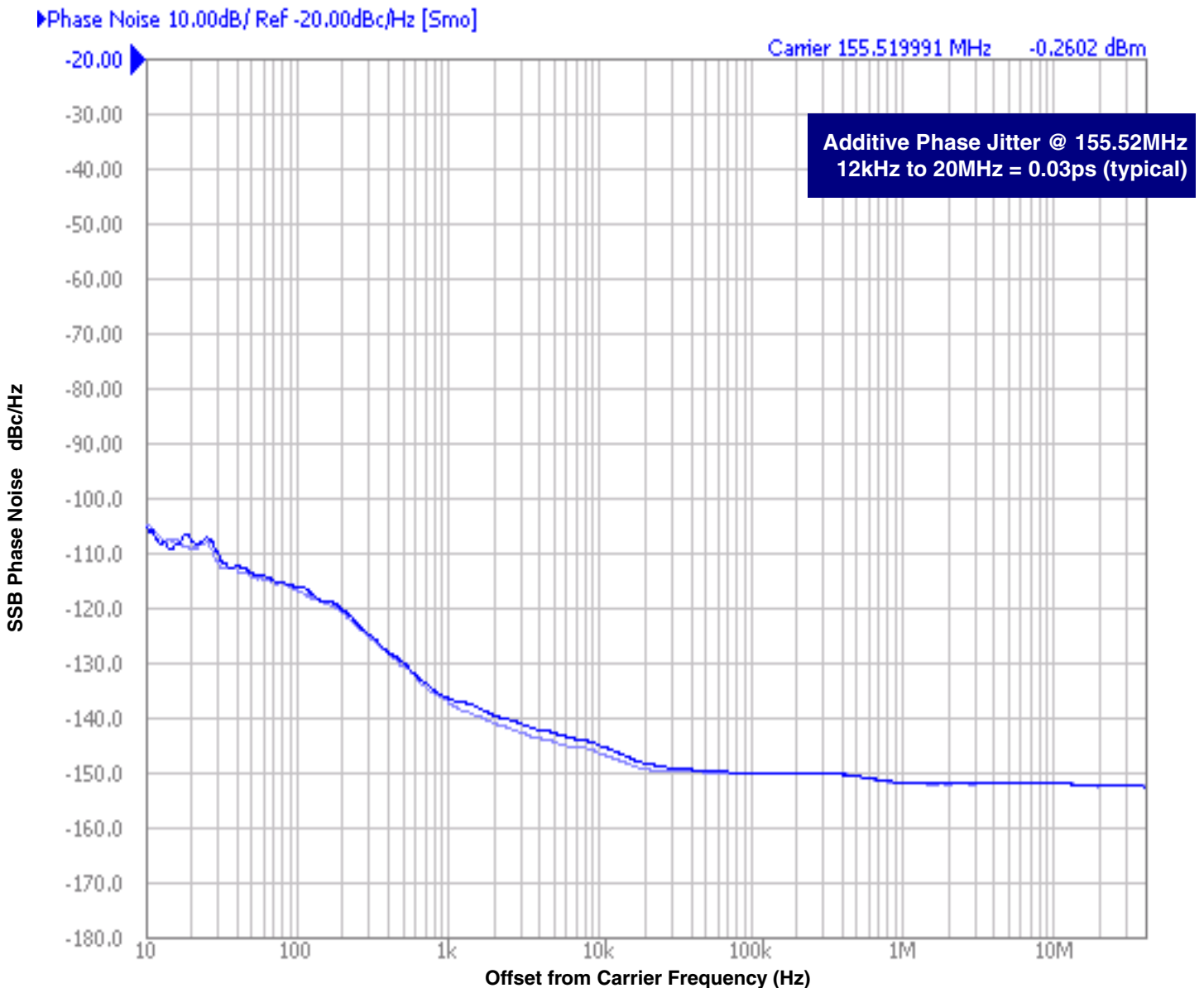
NOTE 3: Defined as skew between outputs on different devices operating at the same supply voltage, same temperature, same frequency and with equal load conditions. Using the same type of inputs on each device, the outputs are measured at the differential cross points.

NOTE 4: This parameter is defined in accordance with JEDEC Standard 65.

Additive Phase Jitter

The spectral purity in a band at a specific offset from the fundamental compared to the power of the fundamental is called the **dBc Phase Noise**. This value is normally expressed using a Phase noise plot and is most often the specified plot in many applications. Phase noise is defined as the ratio of the noise power present in a 1Hz band at a specified offset from the fundamental frequency to the power value of the fundamental. This ratio is expressed in decibels (dBm) or a ratio

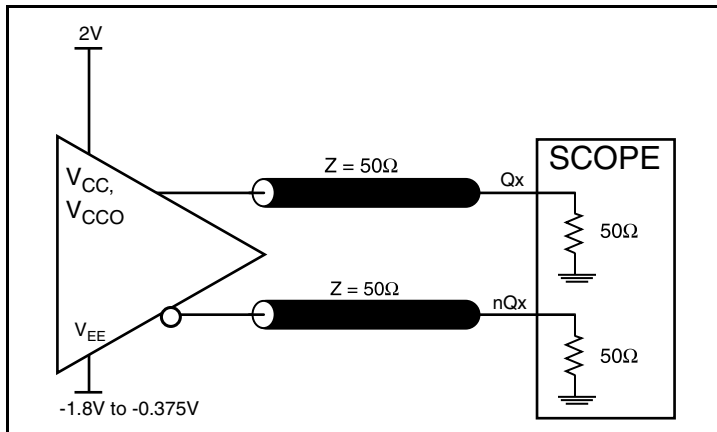
of the power in the 1Hz band to the power in the fundamental. When the required offset is specified, the phase noise is called a **dBc** value, which simply means dBm at a specified offset from the fundamental. By investigating jitter in the frequency domain, we get a better understanding of its effects on the desired application over the entire time record of the signal. It is mathematically possible to calculate an expected bit error rate given a phase noise plot.



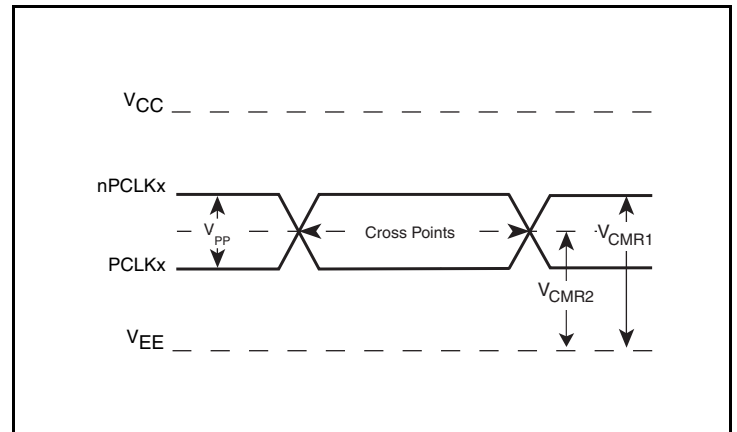
As with most timing specifications, phase noise measurements have issues relating to the limitations of the equipment. Often the noise floor of the equipment is higher than the noise floor of the device. This is illustrated above. The device meets the noise floor of what is shown, but can actually be lower. The phase noise is dependent on the input source and measurement equipment.

Rohde & Schwarz SMA100A Signal Generator 9kHz - 6GHz as external input to a Hewlett Packard 8133A 3GHz Pulse Generator.

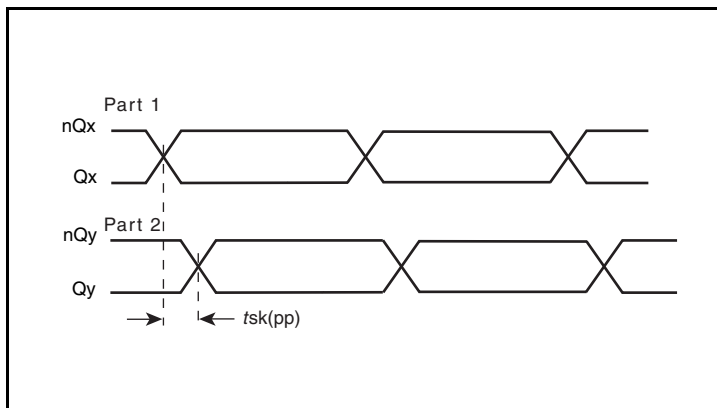
Parameter Measurement Information



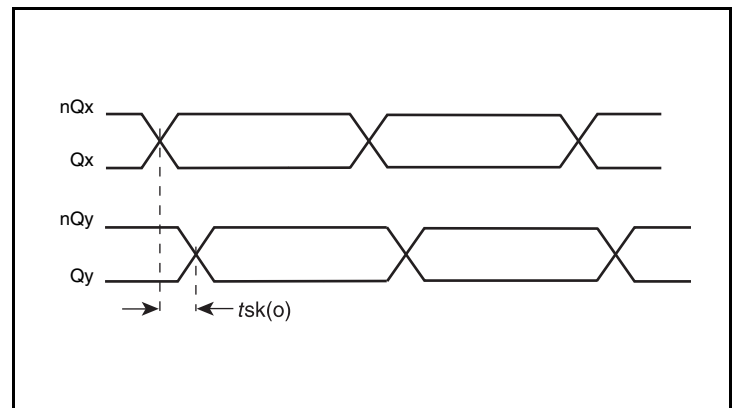
LVPECL Output Load AC Test Circuit



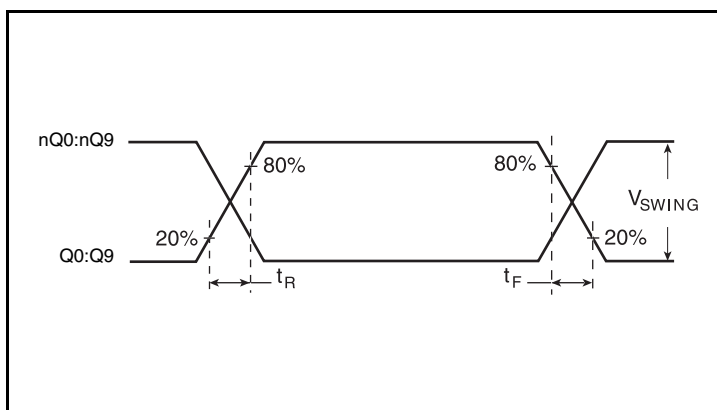
Differential Input Level



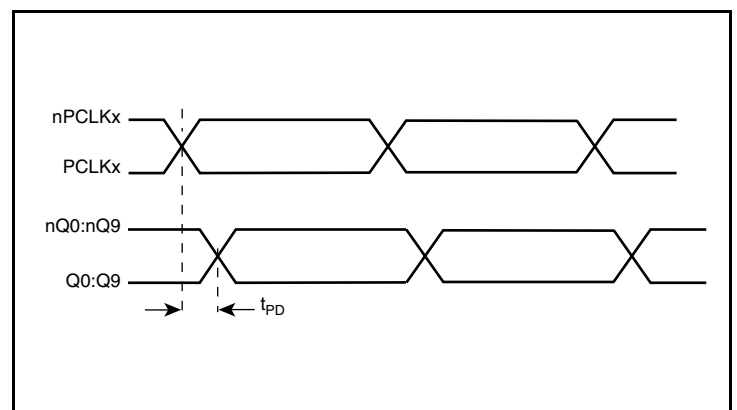
Part-to-Part Skew



Output Skew



Output Rise/Fall Time



Propagation Delay

Applications Information

Wiring the Differential Input to Accept Single-Ended Levels

Figure 1 shows how a differential input can be wired to accept single ended levels. The reference voltage $V_1 = V_{CC}/2$ is generated by the bias resistors R1 and R2. The bypass capacitor (C1) is used to help filter noise on the DC bias. This bias circuit should be located as close to the input pin as possible. The ratio of R1 and R2 might need to be adjusted to position the V_1 in the center of the input voltage swing. For example, if the input clock swing is 2.5V and $V_{CC} = 3.3V$, R1 and R2 value should be adjusted to set V_1 at 1.25V. The values below are for when both the single ended swing and V_{CC} are at the same voltage. This configuration requires that the sum of the output impedance of the driver (R_o) and the series resistance (R_s) equals the transmission line impedance. In addition, matched termination at the input will attenuate the signal in half. This can be done in one of two ways. First, R3 and R4 in parallel should equal the transmission line

impedance. For most 50Ω applications, R3 and R4 can be 100Ω . The values of the resistors can be increased to reduce the loading for slower and weaker LVCMOS driver. When using single-ended signaling, the noise rejection benefits of differential signaling are reduced. Even though the differential input can handle full rail LVCMOS signaling, it is recommended that the amplitude be reduced. The datasheet specifies a lower differential amplitude, however this only applies to differential signals. For single-ended applications, the swing can be larger, however V_{IL} cannot be less than $-0.3V$ and V_{IH} cannot be more than $V_{CC} + 0.3V$. Though some of the recommended components might not be used, the pads should be placed in the layout. They can be utilized for debugging purposes. The datasheet specifications are characterized and guaranteed by using a differential signal.

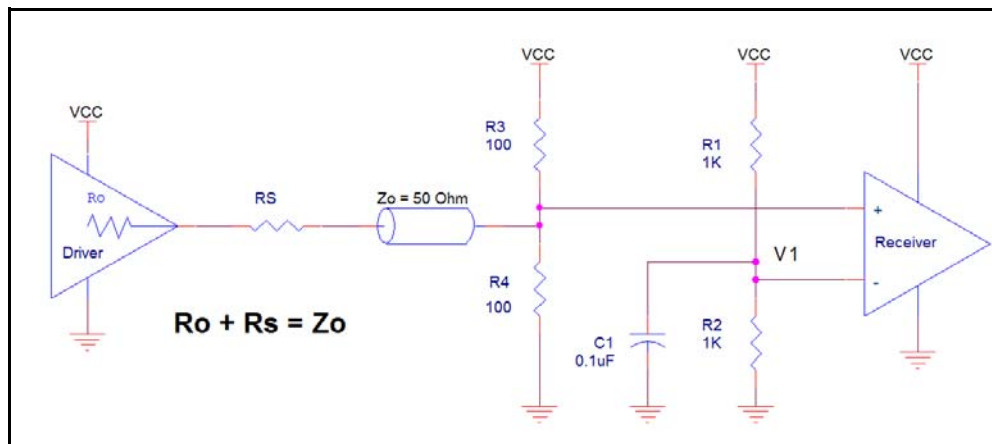


Figure 1. Recommended Schematic for Wiring a Differential Input to Accept Single-ended Levels

Wiring the Differential Input to Accept Single-ended LVPECL Levels

Figure 2 shows an example of the differential input that can be wired to accept single-ended LVPECL levels. The reference voltage level V_{BB} generated from the device is connected to the negative input. The C1 capacitor should be located as close as possible to the input pin.

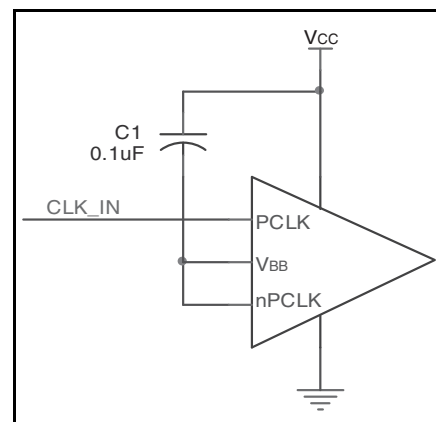


Figure 2. Single-Ended LVPECL Signal Driving Differential Input

LVPECL Clock Input Interface

The PCLK /nPCLK accepts LVPECL, LVDS, CML, SSTL and other differential signals. Both differential signals must meet the V_{PP} and V_{CMR} input requirements. *Figures 3A to 3F* show interface examples for the PCLK/nPCLK input driven by the most common driver types.

The input interfaces suggested here are examples only. If the driver is from another vendor, use their termination recommendation. Please consult with the vendor of the driver component to confirm the driver termination requirements.

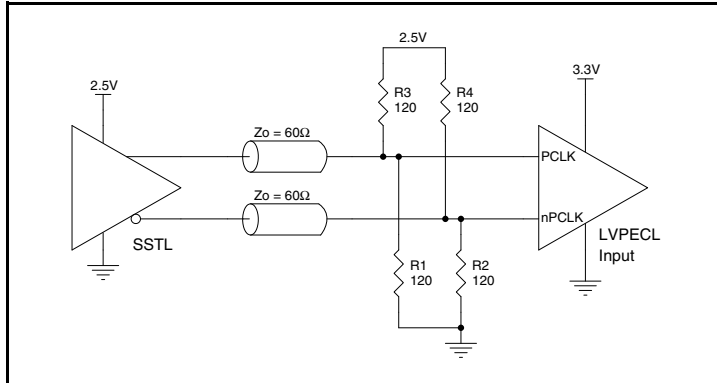


Figure 3A. PCLK/nPCLK Input Driven by an SSTL Driver

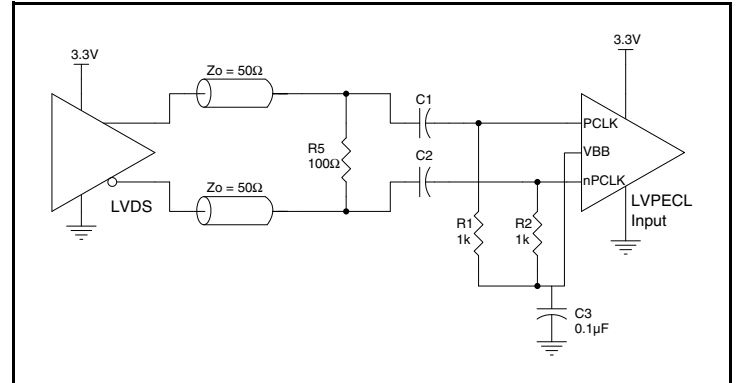


Figure 3B. PCLK/nPCLK Input Driven by a 3.3V LVDS Driver

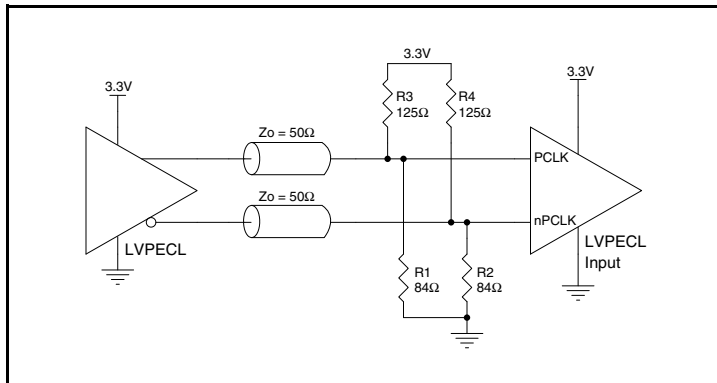


Figure 3C. PCLK/nPCLK Input Driven by a 3.3V LVPECL Driver

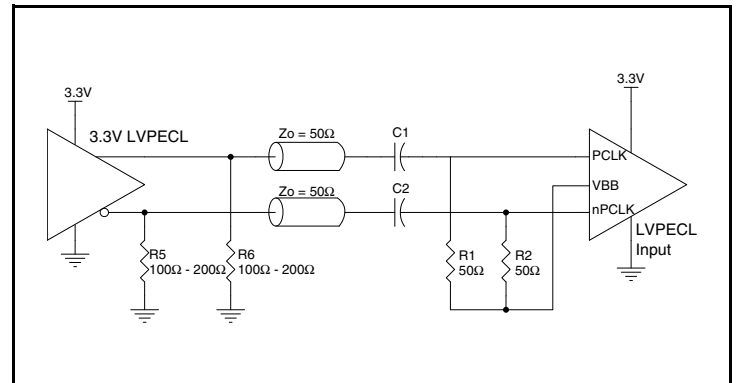


Figure 3D. PCLK/nPCLK Input Driven by a 3.3V LVPECL Driver with AC Couple

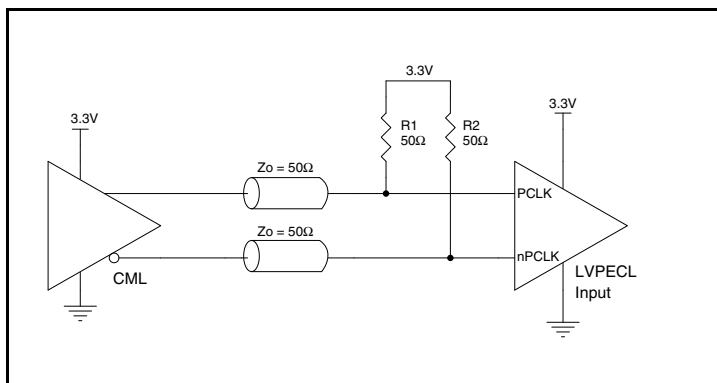


Figure 3E. PCLK/nPCLK Input Driven by a CML Driver

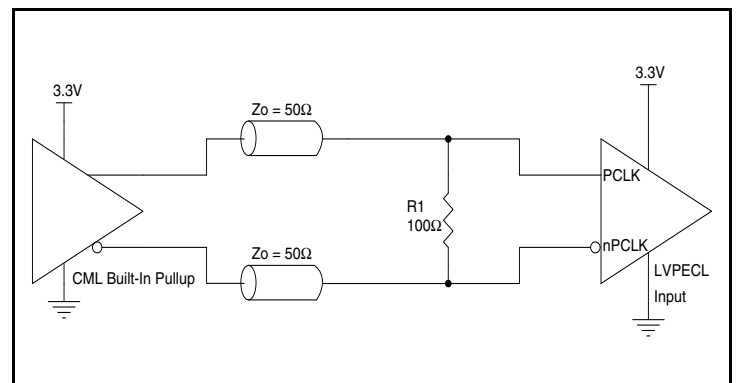


Figure 3F. PCLK/nPCLK Input Driven by a Built-In Pullup CML Driver

Recommendations for Unused Output Pins

Inputs:

PCLK/nPCLK Inputs

For applications not requiring the use of a differential input, both the PCLK and nPCLK pins can be left floating. Though not required, but for additional protection, a 1k Ω resistor can be tied from PCLK to ground.

Outputs:

LVPECL Outputs

All unused LVPECL outputs can be left floating. We recommend that there is no trace attached. Both sides of the differential output pair should either be left floating or terminated.

Termination for 3.3V LVPECL Outputs

The clock layout topology shown below is a typical termination for LVPECL outputs. The two different layouts mentioned are recommended only as guidelines.

The differential outputs are low impedance follower outputs that generate ECL/LVPECL compatible outputs. Therefore, terminating resistors (DC current path to ground) or current sources must be used for functionality. These outputs are designed to drive 50 Ω

transmission lines. Matched impedance techniques should be used to maximize operating frequency and minimize signal distortion.

Figures 4A and 4B show two different layouts which are recommended only as guidelines. Other suitable clock layouts may exist and it would be recommended that the board designers simulate to guarantee compatibility across all printed circuit and clock component process variations.

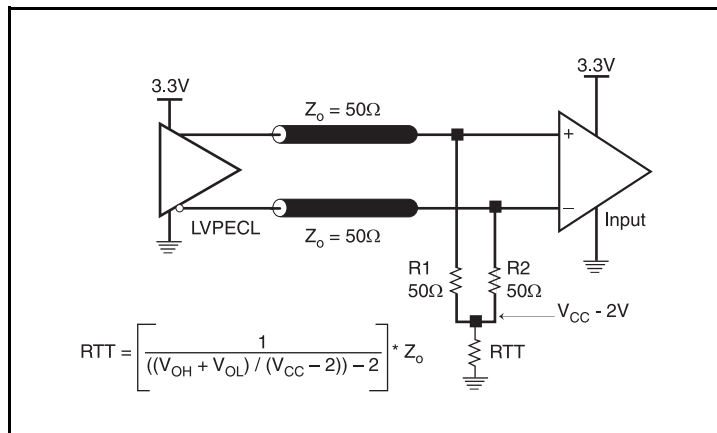


Figure 4A. 3.3V LVPECL Output Termination

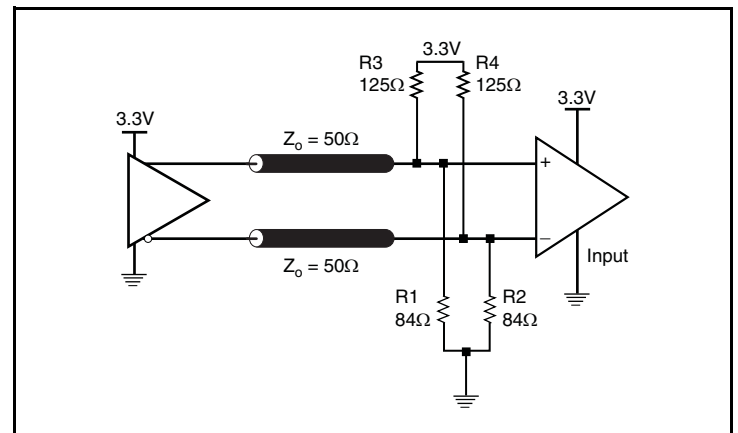


Figure 4B. 3.3V LVPECL Output Termination

Termination for 2.5V LVPECL Outputs

Figure 5A and Figure 5B show examples of termination for 2.5V LVPECL driver. These terminations are equivalent to terminating 50Ω to $V_{CCO} - 2V$. For $V_{CCO} = 2.5V$, the $V_{CCO} - 2V$ is very close to ground

level. The R3 in Figure 5B can be eliminated and the termination is shown in Figure 5C.

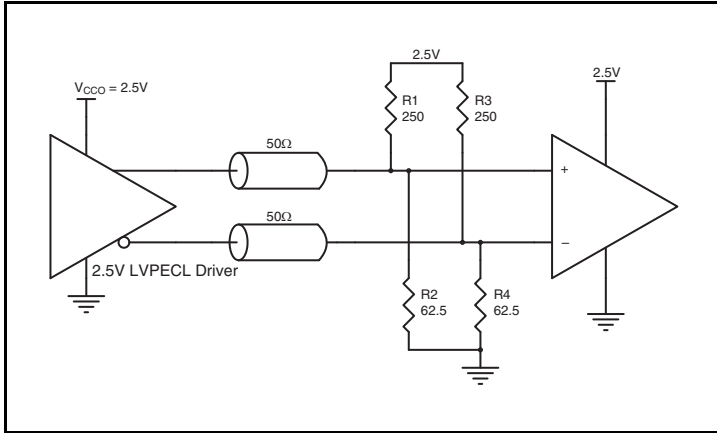


Figure 5A. 2.5V LVPECL Driver Termination Example

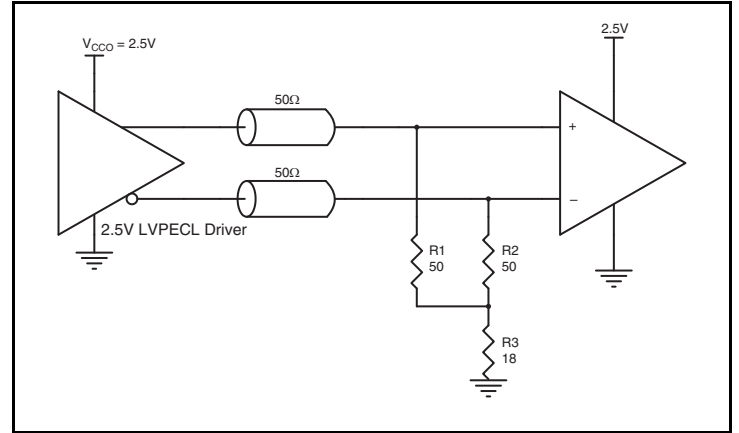


Figure 5B. 2.5V LVPECL Driver Termination Example

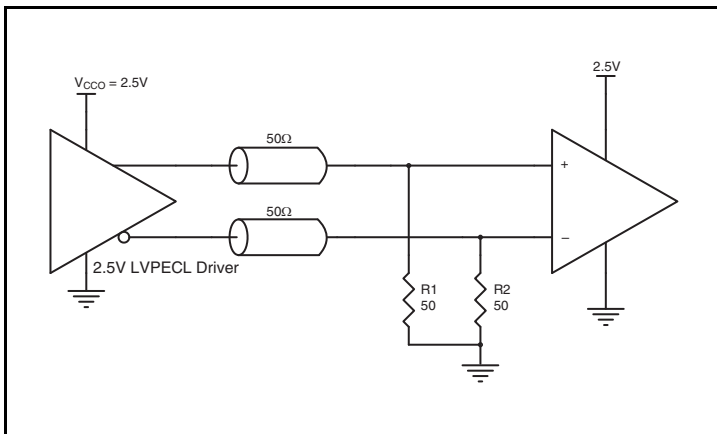


Figure 5C. 2.5V LVPECL Driver Termination Example

TQFP EPAD Thermal Release Path

In order to maximize both the removal of heat from the package and the electrical performance, a land pattern must be incorporated on the Printed Circuit Board (PCB) within the footprint of the package corresponding to the exposed metal pad or exposed heat slug on the package, as shown in *Figure 6*. The solderable area on the PCB, as defined by the solder mask, should be at least the same size/shape as the exposed pad/slug area on the package to maximize the thermal/electrical performance. Sufficient clearance should be designed on the PCB between the outer edges of the land pattern and the inner edges of pad pattern for the leads to avoid any shorts.

While the land pattern on the PCB provides a means of heat transfer and electrical grounding from the package to the board through a solder joint, thermal vias are necessary to effectively conduct from the surface of the PCB to the ground plane(s). The land pattern must be connected to ground through these vias. The vias act as “heat pipes”. The number of vias (i.e. “heat pipes”) are application specific

and dependent upon the package power dissipation as well as electrical conductivity requirements. Thus, thermal and electrical analysis and/or testing are recommended to determine the minimum number needed. Maximum thermal and electrical performance is achieved when an array of vias is incorporated in the land pattern. It is recommended to use as many vias connected to ground as possible. It is also recommended that the via diameter should be 12 to 13mils (0.30 to 0.33mm) with 1oz copper via barrel plating. This is desirable to avoid any solder wicking inside the via during the soldering process which may result in voids in solder between the exposed pad/slug and the thermal land. Precautions should be taken to eliminate any solder voids between the exposed heat slug and the land pattern. Note: These recommendations are to be used as a guideline only. For further information, refer to the Application Note on the *Surface Mount Assembly* of Amkor’s Thermally/Electrically Enhance Leadframe Base Package, Amkor Technology.

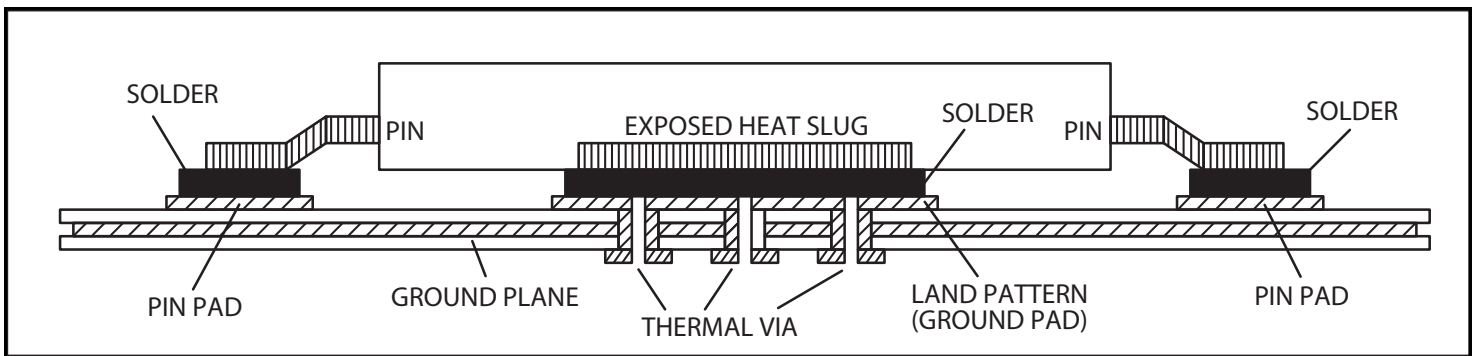


Figure 6. Assembly for Exposed Pad Thermal Release Path - Side View (drawing not to scale)

VFQFN EPAD Thermal Release Path

In order to maximize both the removal of heat from the package and the electrical performance, a land pattern must be incorporated on the Printed Circuit Board (PCB) within the footprint of the package corresponding to the exposed metal pad or exposed heat slug on the package, as shown in *Figure 7*. The solderable area on the PCB, as defined by the solder mask, should be at least the same size/shape as the exposed pad/slug area on the package to maximize the thermal/electrical performance. Sufficient clearance should be designed on the PCB between the outer edges of the land pattern and the inner edges of pad pattern for the leads to avoid any shorts.

While the land pattern on the PCB provides a means of heat transfer and electrical grounding from the package to the board through a solder joint, thermal vias are necessary to effectively conduct from the surface of the PCB to the ground plane(s). The land pattern must be connected to ground through these vias. The vias act as “heat pipes”. The number of vias (i.e. “heat pipes”) are application specific

and dependent upon the package power dissipation as well as electrical conductivity requirements. Thus, thermal and electrical analysis and/or testing are recommended to determine the minimum number needed. Maximum thermal and electrical performance is achieved when an array of vias is incorporated in the land pattern. It is recommended to use as many vias connected to ground as possible. It is also recommended that the via diameter should be 12 to 13mils (0.30 to 0.33mm) with 1oz copper via barrel plating. This is desirable to avoid any solder wicking inside the via during the soldering process which may result in voids in solder between the exposed pad/slug and the thermal land. Precautions should be taken to eliminate any solder voids between the exposed heat slug and the land pattern. Note: These recommendations are to be used as a guideline only. For further information, please refer to the Application Note on the Surface Mount Assembly of Amkor's Thermally/Electrically Enhance Leadframe Base Package, Amkor Technology.

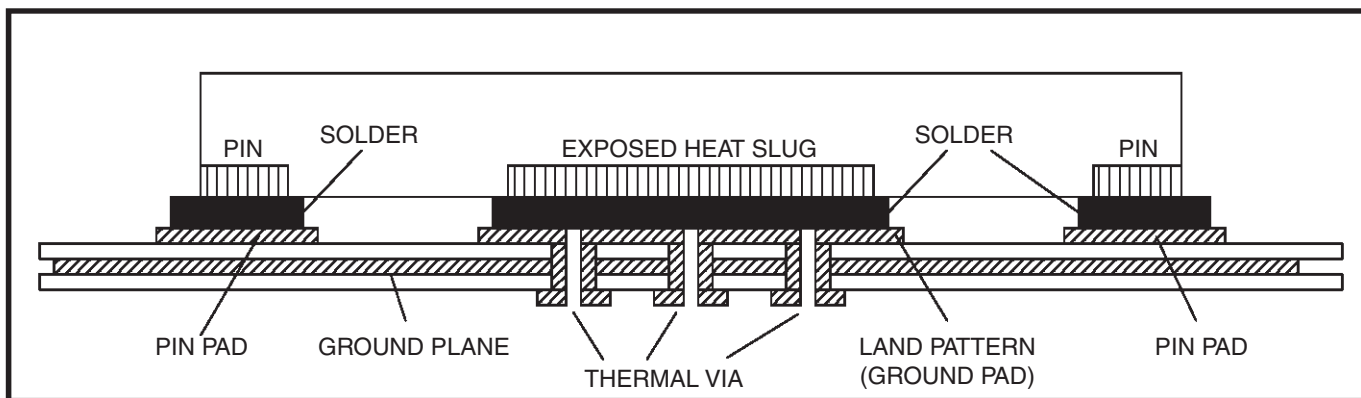


Figure 7. P.C. Assembly for Exposed Pad Thermal Release Path – Side View (drawing not to scale)

This application note provides a general design guide using 853S111B LVPECL buffer. *Figure 8* shows a schematic example of the 853S111B LVPECL clock buffer. In this example, the input is

Figure 8. 853S111B Example LVPECL Clock Output Buffer Schematic

Power Considerations

This section provides information on power dissipation and junction temperature for the 853S111B. Equations and example calculations are also provided.

1. Power Dissipation.

The total power dissipation for the 853S111B is the sum of the core power plus the power dissipated into the load. The following is the power dissipation for $V_{CC} = 3.8V$, which gives worst case results.

NOTE: Please refer to Section 3 for details on calculating power dissipated into the load.

- Power (core)_{MAX} = $V_{CC_MAX} * I_{EE_MAX} = 3.8V * 124mA = 471.2mW$
- Power (outputs)_{MAX} = **30.78mW/Loaded Output pair**
If all outputs are loaded, the total power is $10 * 30.78mW = 307.8mW$

Total Power_{MAX} (3.8V, with all outputs switching) = $471.2mW + 307.8mW = 779mW$

2. Junction Temperature.

Junction temperature, T_j , is the temperature at the junction of the bond wire and bond pad, and directly affects the reliability of the device. The maximum recommended junction temperature is 125°C. Limiting the internal transistor junction temperature, T_j , to 125°C ensures that the bond wire and bond pad temperature remains below 125°C.

The equation for T_j is as follows: $T_j = \theta_{JA} * Pd_{total} + T_A$

T_j = Junction Temperature

θ_{JA} = Junction-to-Ambient Thermal Resistance

Pd_{total} = Total Device Power Dissipation (example calculation is in section 1 above)

T_A = Ambient Temperature

In order to calculate junction temperature, the appropriate junction-to-ambient thermal resistance θ_{JA} must be used. Assuming no air flow and a multi-layer board, the appropriate value is 42.7°C/W per Table 6B below.

Therefore, T_j for an ambient temperature of 85°C with all outputs switching is:

$$85^{\circ}C + 0.779W * 42.7^{\circ}C/W = 118.3^{\circ}C. \text{ This is well below the limit of } 125^{\circ}C.$$

This calculation is only an example. T_j will obviously vary depending on the number of loaded outputs, supply voltage, air flow and the type of board (multi-layer).

Table 6A. Thermal Resistance θ_{JA} for 32-Lead TQFP, E-Pad Forced Convection

| θ_{JA} by Velocity | | | |
|---|----------|----------|----------|
| Meters per Second | 0 | 1 | 2.5 |
| Multi-Layer PCB, JEDEC Standard Test Boards | 36.2°C/W | 30.6°C/W | 29.2°C/W |

Table 6B. Thermal Resistance θ_{JA} for 32-Lead VFQFN, Forced Convection

| θ_{JA} by Velocity | | | |
|---|----------|----------|----------|
| Meters per Second | 0 | 1 | 2.5 |
| Multi-Layer PCB, JEDEC Standard Test Boards | 42.7°C/W | 37.3°C/W | 33.5°C/W |

3. Calculations and Equations.

The purpose of this section is to calculate the power dissipation for the LVPECL output pair.

LVPECL output driver circuit and termination are shown in *Figure 9*.

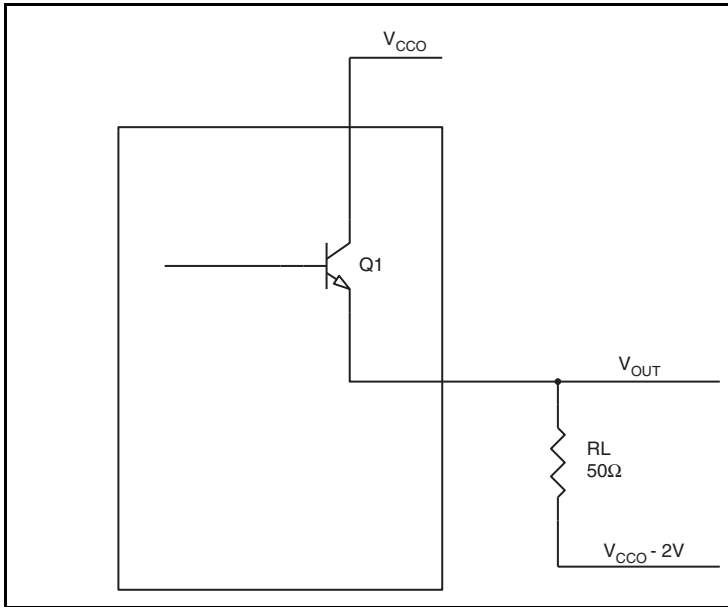


Figure 9. LVPECL Driver Circuit and Termination

To calculate power dissipation into the load, use the following equations which assume a 50Ω load, and a termination voltage of $V_{CCO} - 2V$.

- For logic high, $V_{OUT} = V_{OH_MAX} = V_{CCO_MAX} - 0.89V$
($V_{CCO_MAX} - V_{OH_MAX}$) = **0.89V**
- For logic low, $V_{OUT} = V_{OL_MAX} = V_{CCO_MAX} - 1.67V$
($V_{CCO_MAX} - V_{OL_MAX}$) = **1.67V**

Pd_H is power dissipation when the output drives high.

Pd_L is the power dissipation when the output drives low.

$$Pd_H = [(V_{OH_MAX} - (V_{CCO_MAX} - 2V))/R_L] * (V_{CCO_MAX} - V_{OH_MAX}) = [(2V - (V_{CCO_MAX} - V_{OH_MAX}))/R_L] * (V_{CCO_MAX} - V_{OH_MAX}) = [(2V - 0.89V)/50\Omega] * 0.89V = \mathbf{19.76mW}$$

$$Pd_L = [(V_{OL_MAX} - (V_{CCO_MAX} - 2V))/R_L] * (V_{CCO_MAX} - V_{OL_MAX}) = [(2V - (V_{CCO_MAX} - V_{OL_MAX}))/R_L] * (V_{CCO_MAX} - V_{OL_MAX}) = [(2V - 1.67V)/50\Omega] * 1.67V = \mathbf{11.02mW}$$

$$\text{Total Power Dissipation per output pair} = Pd_H + Pd_L = \mathbf{30.78mW}$$

Reliability Information

Table 7A. θ_{JA} vs. Air Flow Table for a 32-Lead TQFP, E-Pad

| θ_{JA} vs. Air Flow | | | |
|---|----------|----------|----------|
| Meters per Second | 0 | 1 | 2.5 |
| Multi-Layer PCB, JEDEC Standard Test Boards | 36.2°C/W | 30.6°C/W | 29.2°C/W |

Table 7B. θ_{JA} vs. Air Flow Table for a 32-Lead VFQFN

| θ_{JA} vs. Air Flow | | | |
|---|----------|----------|----------|
| Meters per Second | 0 | 1 | 2.5 |
| Multi-Layer PCB, JEDEC Standard Test Boards | 42.7°C/W | 37.3°C/W | 33.5°C/W |

Transistor Count

The transistor count for 853S111B is: 448

This device is pin and functional compatible with and is the suggested replacement for the 853S111B.

Pin compatible with MC100EP111, MC100LVEP111 and 853S111B.

Package Outline and Package Dimensions

Package Outline - G Suffix for 32-Lead TQFP, E-Pad

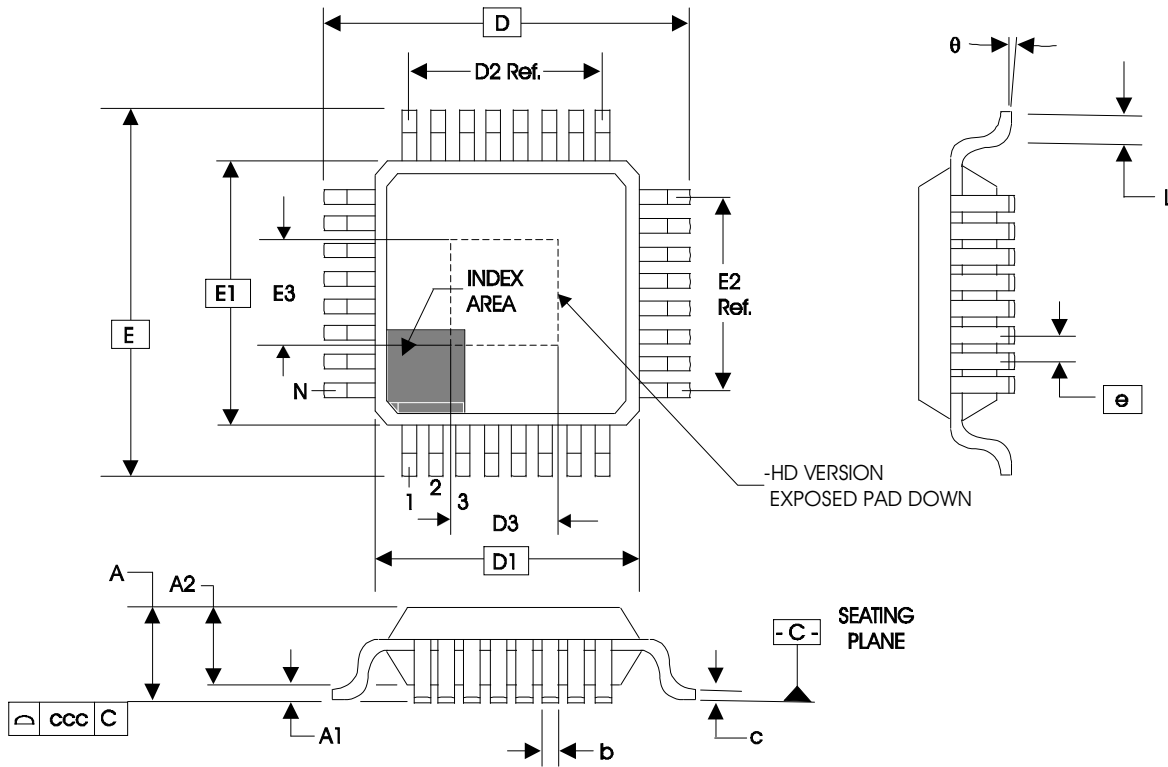


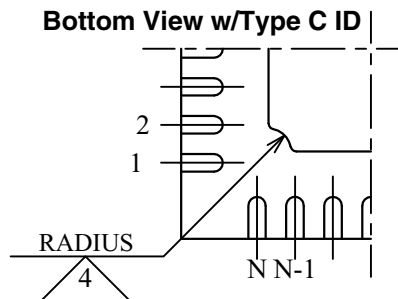
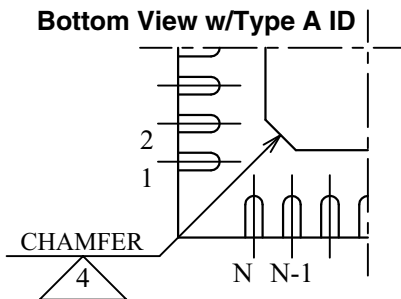
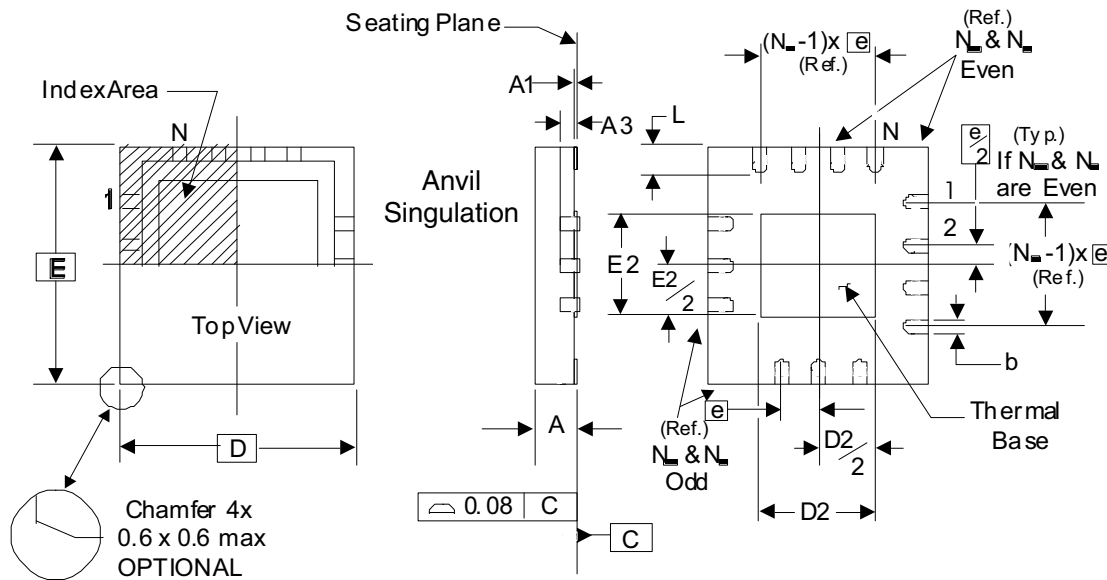
Table 8. Package Dimensions 32-Lead TQFP, E-Pad

| JEDEC Variation: ABC - HD All Dimensions in Millimeters | | | |
|--|------------|---------|---------|
| Symbol | Minimum | Nominal | Maximum |
| N | 32 | | |
| A | | | 1.20 |
| A1 | 0.05 | 0.10 | 0.15 |
| A2 | 0.95 | 1.00 | 1.05 |
| b | 0.30 | 0.35 | 0.40 |
| c | 0.09 | | 0.20 |
| D & E | 9.00 Basic | | |
| D1 & E1 | 7.00 Basic | | |
| D2 & E2 | 5.60 Ref. | | |
| D3 & E3 | 3.0 | | 4.0 |
| e | 0.80 Basic | | |
| L | 0.45 | 0.60 | 0.75 |
| θ | 0° | | 7° |
| ccc | | | 0.10 |

Reference Document: JEDEC Publication 95, MS-026

Package Outline and Package Dimensions

Package Outline - K Suffix for 32-Lead VFQFN



There are 2 methods of indicating pin 1 corner at the back of the VFQFN package:

1. Type A: Chamfer on the paddle (near pin 1)
2. Type C: Mouse bite on the paddle (near pin 1)

Table 9. Package Dimensions

| JEDEC Variation: VHHD-2/-4 All Dimensions in Millimeters | | | |
|---|---------|------------|---------|
| Symbol | Minimum | Nominal | Maximum |
| N | | 32 | |
| A | 0.80 | | 1.00 |
| A1 | 0 | | 0.05 |
| A3 | | 0.25 Ref. | |
| b | 0.18 | 0.25 | 0.30 |
| N_D & N_E | | | 8 |
| D & E | | 5.00 Basic | |
| D2 & E2 | 3.0 | | 3.3 |
| e | | 0.50 Basic | |
| L | 0.30 | 0.40 | 0.50 |

NOTE: The following package mechanical drawing is a generic drawing that applies to any pin count VFQFN package. This drawing is not intended to convey the actual pin count or pin layout of this device. The pin count and pin-out are shown on the front page. The package dimensions are in Table 9.

Reference Document: JEDEC Publication 95, MO-220

Ordering Information

Table 10. Ordering Information

| Part/Order Number | Marking | Package | Shipping Packaging | Temperature |
|-------------------|--------------|---------------------|---|---------------|
| 853S111BYILF | ICS53S111BIL | 32-Lead TQFP, E-Pad | Tray | -40°C to 85°C |
| 853S111BYILFT | ICS53S111BIL | 32-Lead TQFP, E-Pad | Tape & Reel | -40°C to 85°C |
| 853S111BKILF | ICS3S111BIL | 32-Lead VFQFN | Tray | -40°C to 85°C |
| 853S111BKILFT | ICS3S111BIL | 32-Lead VFQFN | Tape & Reel, pin 1 orientation: EIA-481-C | -40°C to 85°C |
| 853S111BKILF/W | ICS3S111BIL | 32-Lead VFQFN | Tape & Reel, pin 1 orientation EIA-481-D | -40°C to 85°C |

Table 11. Pin 1 Orientation in Tape and Reel Packaging

| Part Number Suffix | Pin 1 Orientation | Illustration |
|--------------------|------------------------|--------------|
| T | Quadrant 1 (EIA-481-C) | |
| /W | Quadrant 2 (EIA-481-D) | |

Revision History Sheet

| Rev | Table | Page | Description of Change | Date |
|-----|-------------------|------|--|------------|
| B | T6A T7A T10 | 1 | Added 32-Lead VFQFN Pin Assignment and all references throughout the datasheet. | 11/18/2011 |
| | | 17 | Thermal Resistance Table, updated theta ja numbers. | |
| | | 19 | Thermal Resistance, updated theta ja numbers. | |
| | | 22 | Ordering Information Table - added 32-Lead VFQFN ordering information. | |
| C | T5 | 7 | Added 0.13 value to Max columns for tjit Buffer Additive Phase Jitter, RMS. | 4/5/2012 |
| C | T10 | 1 | Added CML to 3rd bullet. | 10/29/2012 |
| | | 11 | Added figures 3E and 3F. | |
| | | 22 | Deleted quantity from tape and reel. | |
| C | T10 | 10 | Updated <i>Wiring the Differential Inputs to Accept Single-ended Levels</i> application note. | 6/12/2013 |
| | | 13 | Corrected diagrams in application note, <i>Termination for 2.5V LVPECL Outputs</i> , | |
| | | 21 | Corrected 32-Lead VFQFN Package Outline | |
| | | 22 | Ordering Information Table - corrected 32-Lead TQFP packaging column from Tube to Tray. | |
| C | T4C | 5 | Added V _{BB} , Output Reference row to table 4C. | 1/10/2014 |
| D | T4B | 5 | LVPECL DC Characteristics Table - added V _{CMR1} and V _{CMR2} specs. Change Note 4, and added Note 5. | 6/15/15 |
| | T4C | 6 | LVPECL DC Characteristics Table - added V _{CMR1} and V _{CMR2} specs. Change Note 4, and added Note 5. | |
| | | | Deleted "ICS" prefix from part number throughout the datasheet. | |
| E | T11 | 23 | Added P1 orientation for Tape and Reel table. | 6/30/15 |
| | T10 | | Ordering information Table - Added W part number. | |
| F | | 11 | Applications Information Section - added <i>Wiring the Differential Input to Accept single-ended LVPECL Levels</i> . Updated datasheet header/footer. | 1/14/16 |



Corporate Headquarters
6024 Silver Creek Valley Road
San Jose, CA 95138 USA

Sales
1-800-345-7015 or 408-284-8200
Fax: 408-284-2775
www.IDT.com

Tech Support
email: clocks@idt.com

DISCLAIMER Integrated Device Technology, Inc. (IDT) and its subsidiaries reserve the right to modify the products and/or specifications described herein at any time and at IDT's sole discretion. All information in this document, including descriptions of product features and performance, is subject to change without notice. Performance specifications and the operating parameters of the described products are determined in the independent state and are not guaranteed to perform the same way when installed in customer products. The information contained herein is provided without representation or warranty of any kind, whether express or implied, including, but not limited to, the suitability of IDT's products for any particular purpose, an implied warranty of merchantability, or non-infringement of the intellectual property rights of others. This document is presented only as a guide and does not convey any license under intellectual property rights of IDT or any third parties.

IDT's products are not intended for use in applications involving extreme environmental conditions or in life support systems or similar devices where the failure or malfunction of an IDT product can be reasonably expected to significantly affect the health or safety of users. Anyone using an IDT product in such a manner does so at their own risk, absent an express, written agreement by IDT.

While the information presented herein has been checked for both accuracy and reliability, Integrated Device Technology (IDT) assumes no responsibility for either its use or for the infringement of any patents or other rights of third parties, which would result from its use. No other circuits, patents, or licenses are implied. This product is intended for use in normal commercial applications. Any other applications, such as those requiring extended temperature ranges, high reliability or other extraordinary environmental requirements are not recommended without additional processing by IDT. IDT reserves the right to change any circuitry or specifications without notice. IDT does not authorize or warrant any IDT product for use in life support devices or critical medical instruments.

Integrated Device Technology, IDT and the IDT logo are registered trademarks of IDT. Product specification subject to change without notice. Other trademarks and service marks used herein, including protected names, logos and designs, are the property of IDT or their respective third party owners.

Copyright ©2015 Integrated Device Technology, Inc. All rights reserved.

Mouser Electronics

Authorized Distributor

Click to View Pricing, Inventory, Delivery & Lifecycle Information:

[IDT \(Integrated Device Technology\):](#)

[853S111BYILF](#) [853S111BYILFT](#) [853S111BKILFT](#) [853S111BKILF](#)