










ITW SWITCHES SLIDE SWITCHES

Design, development and manufacture of switch solutions

-  PUSH BUTTON
-  SNAP ACTION
-  ACTUATORS
-  SLIDE
-  ROTARY
-  CUSTOM ASSEMBLIES
-  MILITARY / AEROSPACE



ITW Switches
SENSORS, SWITCHES, ELECTRONIC CONTROLS



WWW.ITWSWITCHES.COM

800.544.3355

SLIDE SWITCHES

Table Of Contents ii – iii

Series 23: Mini Mike™ Miniature 74 – 75

Series SE1022: Double Pole Line Voltage Selector 76 – 77



Series 023

MINI MIKE MINIATURE SLIDE SWITCHES

This rugged, long life miniature slide switch is ideal for applications where exceptional quality and reliability are needed. Available in SPDT and DPDT configurations, these gold contact slide switches come with PC terminals.



APPLICATIONS

- Medical controls
- Test equipment
- Datacom
- Precision instrumentation

KEY FEATURES:

- SPDT and DPDT circuits
- Gold Contacts
- PC terminals
- Some versions UL recognized
- Temperature range: -40°C to +100°C

ACTUAL SIZE

ORDERING INFORMATION:

Part Number	Circuit	Button Height	Terminal Configuration	Rating
023-021-105	SPDT	0.20	2	250 mA @ 30 VDC
023-021-114	DPDT	0.20	3	100 mA @ 125 VDC
023-021-304 *	SPDT (Form Z)	0.14	4	500 mA @ 30 VDC

* UL recognized 0.5 A @ 125 VAC, 75 VDC

STANDARDS / AGENCY / RATINGS:



MECHANICAL / ELECTRICAL CHARACTERISTICS:

Circuit:

SPDT (023-021-105) (Form C)
 DPDT (023-021-114) (Form CC)
 SPDT-DB (023-021-304) (Form Z)

Operating force:

200-500 grams (023-021-114)
 100-500 grams (023-021-105 & 304)

Electrical rating:

100 milliamps 125 VDC (023-021-114)
 250 milliamps 30 VDC (023-021-105)
 0.5 amp 125 VAC (023-021-304)

Contact resistance:

20 milliohms max initially

Temperature rating:

-40°F to 212°F
 (-40°C to 100°C)

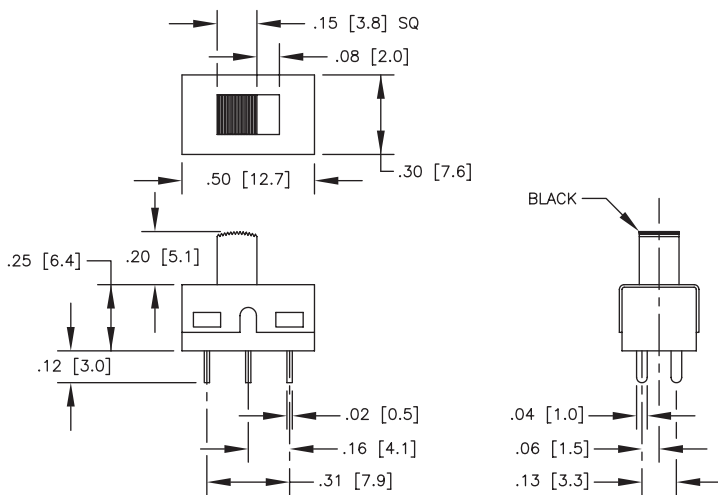
Life:

100,000 actuations

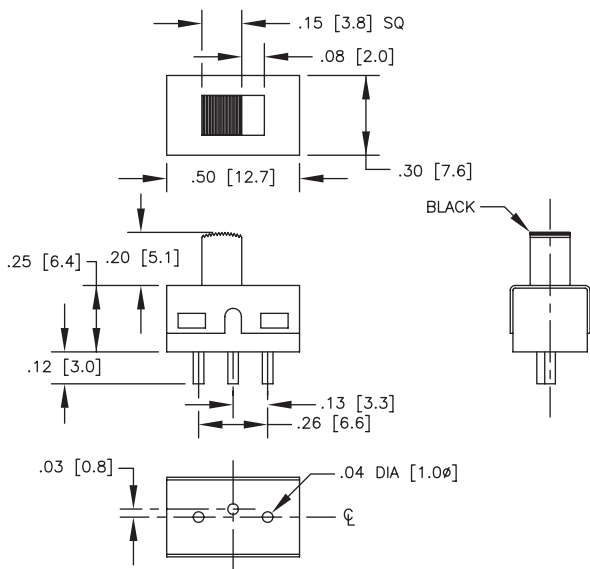
Contact material:

hard gold over barrier

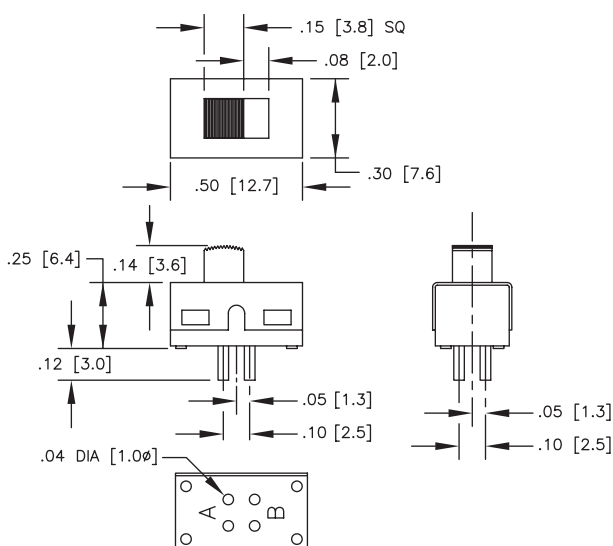
023-021-114



023-021-105



023-021-304



Series SE1022

DOUBLE POLE LINE VOLTAGE SELECTOR SWITCHES

This rugged fully enclosed housing is built for tough applications. The positive detect action, status indication and variety of contact configurations make this series ideal for a variety of needs.

APPLICATIONS

- Consumer power supplies
- Lower cost dual use power supplies

KEY FEATURES:

- Status indication: variety of markings available
- Variety of terminal styles
- Electrical life: 10,000 cycles
- UL recognized and CSA certified and VDE approved
- Variety of mounting styles
- Silver plated contacts



ACTUAL SIZE

ORDERING INFORMATION:

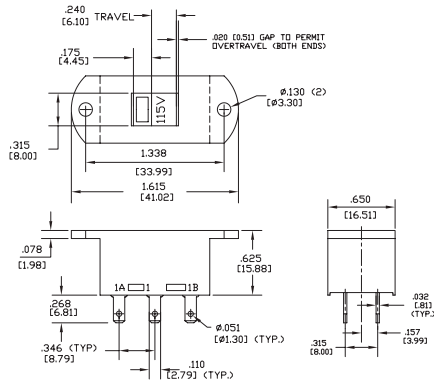
Part Number	Terminals	Dimensions	Marking
18-000-0016	.110 quick connect	1.615 L x .650 W x .625 H	230V/115V
18-000-0019	Right angle	1.030 L x .650 W x .625 H	230V/115V
18-000-0022	PC	1.030 L x .650 W x .625 H	230V/115V
18-000-0040	.110 quick connect	Snap in: .677 x 1.240 Cut out *	230V/115V

* It is recommended that panel thickness range from .015 to .125" (.038 to 3.18 mm) with switch cut-out punched from front of panel.

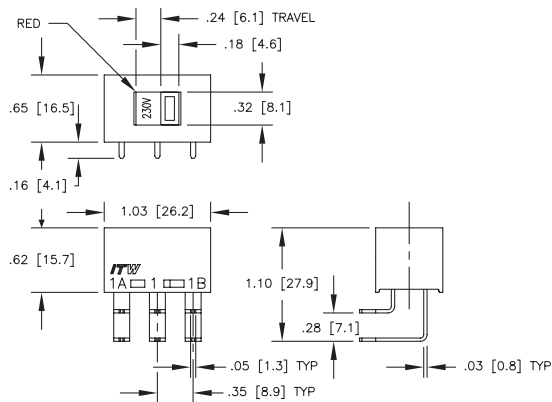
STANDARDS / AGENCY / RATINGS:



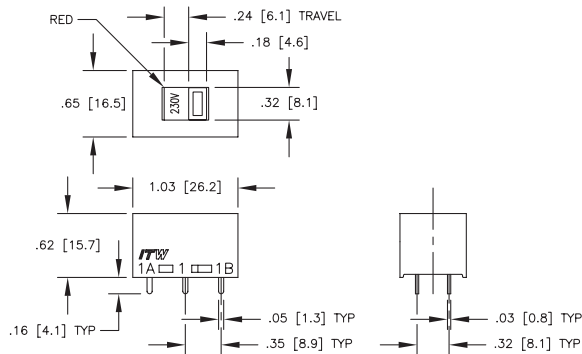
18-000-0016



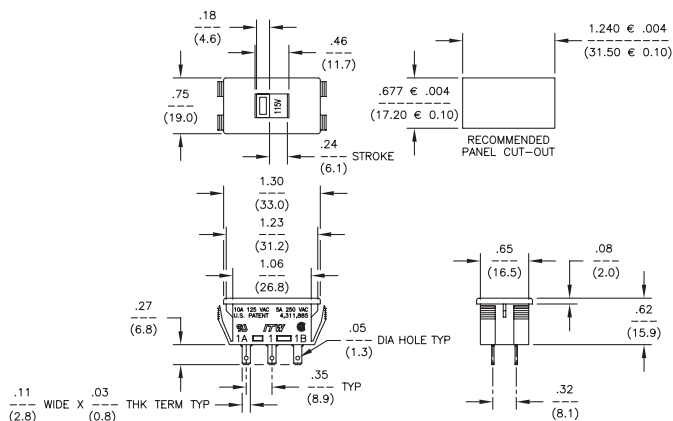
18-000-0019



18-000-0022



18-000-0040



MECHANICAL / ELECTRICAL CHARACTERISTICS:

Circuit:

DPDT (Form CC)

Electrical life:

10,000 cycles

Housing/actuator:

Nylon 94 V0

Terminal base:

phenolic laminate

Terminals:

silver plated copper

Electrical ratings:

Circuitry	Current	Voltage
DPDT*	10 Amp	125 VAC
DPDT*	5 Amp	250 VAC
DPDT**	10 Amp	125 VAC-T85
DPDT**	5 Amp	250 VAC-T85

* UL and CSA recognized
** VDC recognized