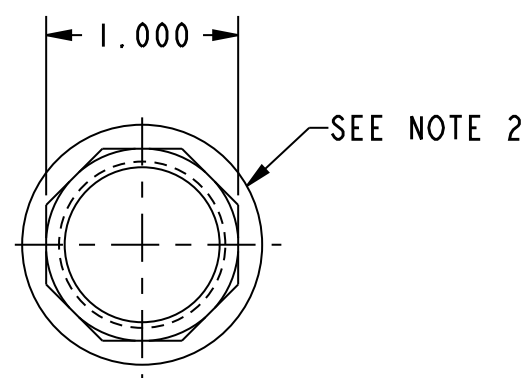
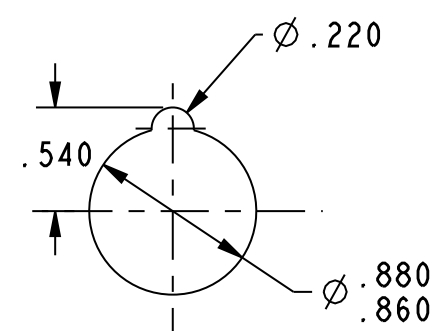
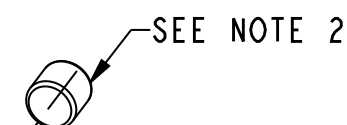


HONEYWELL
PART NUMBER
90233

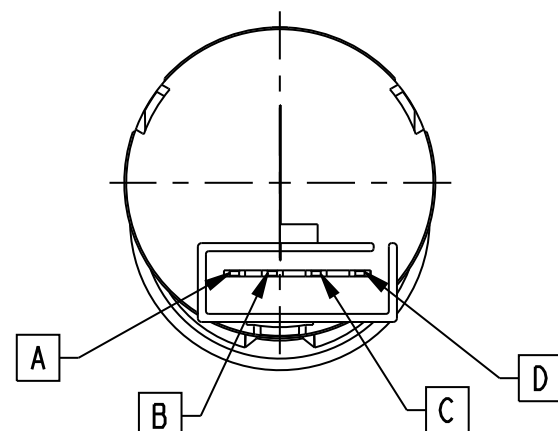
REV	CHANGE DOCUMENT	CHANGED BY	CHECK
A	0065768	PRS 26MAY10	CMH

**MOUNTING NUT (81942)**

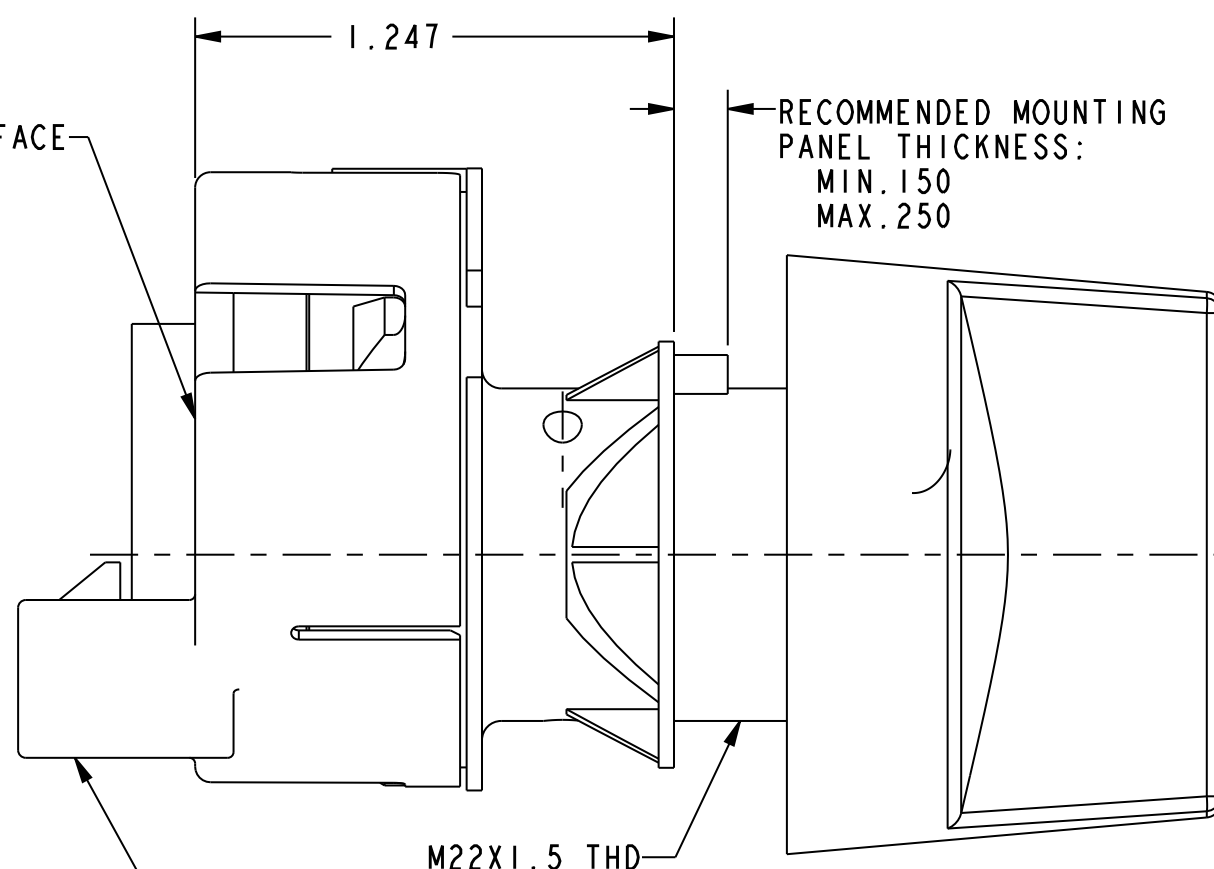
TORQUE NUT TO
50 IN.LBS. MAX

**PROPOSED MOUNTING HOLE****PLUG (88552)**

HONEYWELL PART NO., DATE CODE
(SEE NOTE 5) AND OPERATORS
CLOCK NUMBER TO BE PRINTED ON
LABEL AND AFFIXED TO THIS SURFACE

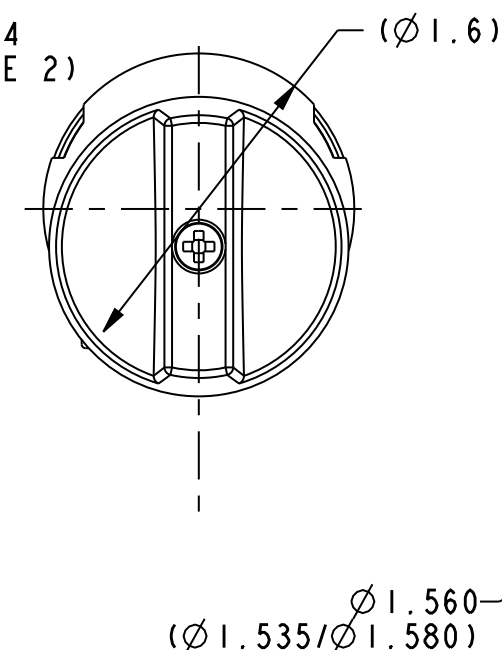
**VIEW OF TERMINALS**

SCALE 1:1

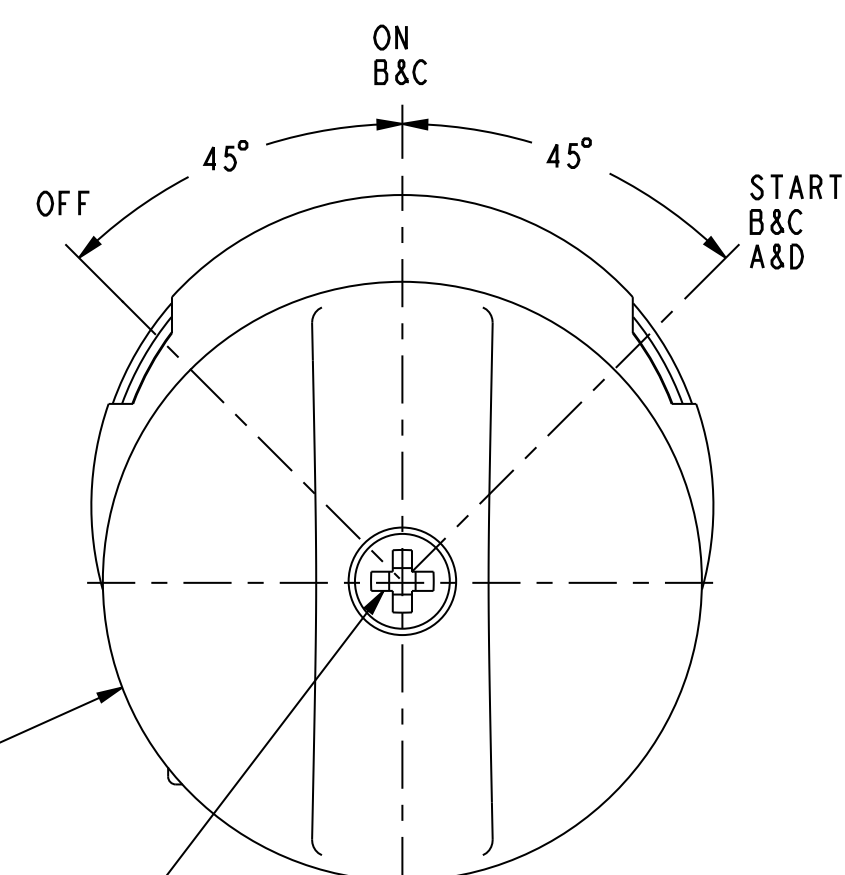


MATING CONNECTOR
DELPHI/PACKARD ELECTRIC
280 SERIES, 4 WAY METRIPACK
HOUSING: PN 12052856
TERMINALS: PN 12034046

NOB
P/N 88024
(SEE NOTE 2)



SCREW PN 84833
6-19 X .50
(TORQUE TO 4 IN/LBS)

**FRONT VIEW****NOTES:**

- 1 - OFF/ON/START (RECOIL)
- 2 - NUT, KNOB, PLUG AND SCREW ARE NOT INSTALLED, BUT IS SHIPPED ALONG WITH SWITCHES, PER PACK OP P/N 994400.
- 3 - MAXIMUM ELECTRICAL RATING: 12 VOLT-20 AMP
- 4 - MATERIAL SPECIFICATION:
FRONT HOUSING-40% MINERAL FILLED NYLON
BACK HOUSING-POLYPROPYLENE
NUT-40% MINERAL FILLED NYLON
COVER-DYNAFLEX
- 5 - DATE CODE IS A 5 DIGIT NO., 1ST AND 2ND DIGITS REPRESENT THE YEAR, THE NEXT 3 DIGITS REPRESENT THE DAY.

CUSTOMER PRINT

DESIGN UNITS: INCH	DRAWN	CXS	20MAY10	Honeywell		
TOLERANCES UNLESS NOTED:	CHECK	CXS	20MAY10			
NO PLACES x ± .400	THIS DRAWING COVERS A PROPRIETARY ITEM AND IS THE PROPERTY OF HONEYWELL. THIS DRAWING IS NOT TO BE COPIED OR USED WITHOUT THE PERMISSION OF HONEYWELL.			TITLE		
ONE PLACE .x ± .020				KEY SWITCH ASSEMBLY		
TWO PLACE .xx ± .010				(RECOIL START)		
THREE PLACE .xxx ± .005				SIZE	TYPE	DRAWING NAME
FOUR PLACE .xxxx ± .0005	INTERPRET PER ASME Y14.5M-1994 OTHER HONEYWELL ENGINEERING STANDARDS MAY APPLY			C	I	90233
ANGLES x ± 2°				SCALE	2:1	REV A
THIRD ANGLE PROJECTION	Pro/ENGINEER	3D	SHEET	1	OF	1