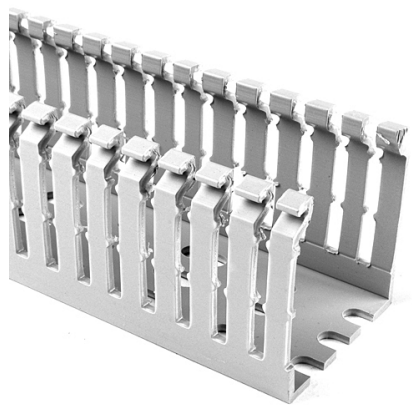


Specification Sheet

Part Number: 184-15101



High Density Slotted Wall Wiring Duct, 1.5" x 1", Non-Adhesive, PVC, Gray, 120ft/Carton

Article Number	184-15101
Type	SLHD1.5X1
Color	Gray (GY)
Features & Benefits	<ul style="list-style-type: none">• Narrow fingers reduce fanning of the wires to the terminal blocks, presenting a neater appearance.• Each finger is provided with a double restriction to hold wires in the bottom portion of the duct, allowing for easier installation.• Mounting holes are uniform in size and are offered every 2 inches to accommodate compact designs and ease installation.• Optional covers snap on and off easily, and are provided with a non-slip lining that insures the covers remain in place during vibration.
Quantity Per	carton

Product Description	HellermannTyton Pro-Duct High-Density, Slotted-Wall Wiring Duct features narrow fingers equaling a 2 to 1 finger ratio compared to standard slotted wiring duct. With the narrow fingers, compact designs and components are more easily accommodated.
Short Description	High Density Slotted Wall Wiring Duct, 1.5" x 1", Non-Adhesive, PVC, Gray, 120ft/Carton
Global Part Name	SLHD1.5X1-PVC-GY
Technical Description	Non-Adhesive
Length L (Imperial)	6.0
Length L (Metric)	1.83
Width W (Imperial)	1.5
Width W (Metric)	38.1
Height H (Imperial)	1.06
Height H (Metric)	26.9
Mounting Hole Centers (Imperial)	2.0
Material	Polyvinylchloride (PVC)
Material Shortcut	PVC

Flammability	Self-Extinguishing
Halogen free	No
Operating Temperature (Metric)	+122°F (+50°C)
Reach Complaint(Article 33)	No
ROHS Complaint	Yes
Certification/Specification WEB	EN 50085-2-3_1A CSA UL EN 50085-1:2005 + A1:2013
UL Recognized (US)	Yes
Package Quantity(Imperial)	120
Package Quantity (Metric)	36.58
Customs Number	3925900000