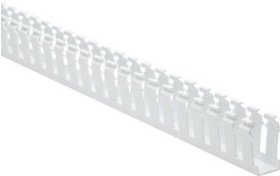


Specification Sheet

Part Number: 181-12008



Slotted Wall Wiring Duct, 1" x 2", Non-Adhesive, PVC, White, 120 ft/carton

Article Number	181-12008
Type	SL1X2
Color	White (WH)
Features & Benefits	<ul style="list-style-type: none"><li>• Strong fingers prevent unwanted breaking.</li><li>• Fingers are easily deflected outward, allowing ready positioning of the wires within the slotted wall duct.</li><li>• Restricted opening design in the finger of the duct helps keep wires in place.</li><li>• Restricted opening prevents unintended removal of wires and permits any individual wire to be traced without disconnection.</li><li>• Supplied with mounting holes to streamline installation.</li><li>• Optional covers enhance protection and appearance.</li></ul>
Quantity Per	carton

<b>Product Description</b>	Pro-Duct slotted wall wiring duct features break-away fingers which provide additional access for wire leads. Each section of the duct is provided with two score lines. The upper score line is used to break away fingers when a greater opening is required. The lower score line allows the sidewall to be smoothly cut for joints and Ts.
<b>Short Description</b>	Slotted Wall Wiring Duct, 1" x 2", Non-Adhesive, PVC, White, 120 ft/carton
<b>Global Part Name</b>	SL1X2-PVC-WH
<b>Technical Description</b>	Non-Adhesive
<b>Length L (Imperial)</b>	6.0
<b>Length L (Metric)</b>	1.83
<b>Width W (Imperial)</b>	1.0
<b>Width W (Metric)</b>	25.4
<b>Height H (Imperial)</b>	2.07
<b>Height H (Metric)</b>	52.6
<b>Mounting Hole Centers (Imperial)</b>	4.0
<b>Material</b>	Polyvinylchloride (PVC)
<b>Material Shortcut</b>	PVC

<b>Flammability</b>	Self-Extinguishing
<b>Halogen free</b>	No
<b>Operating Temperature (Metric)</b>	+122°F (+50°C)
<b>Reach Complaint(Article 33)</b>	No
<b>ROHS Complaint</b>	Yes
<b>Certification/Specification WEB</b>	UL EN 50085-1:2005 + A1:2013 EN 50085-2-3_1A CSA
<b>UL Recognized (US)</b>	Yes
<b>Package Quantity(Imperial)</b>	120
<b>Package Quantity (Metric)</b>	36.58
<b>Customs Number</b>	3925900000