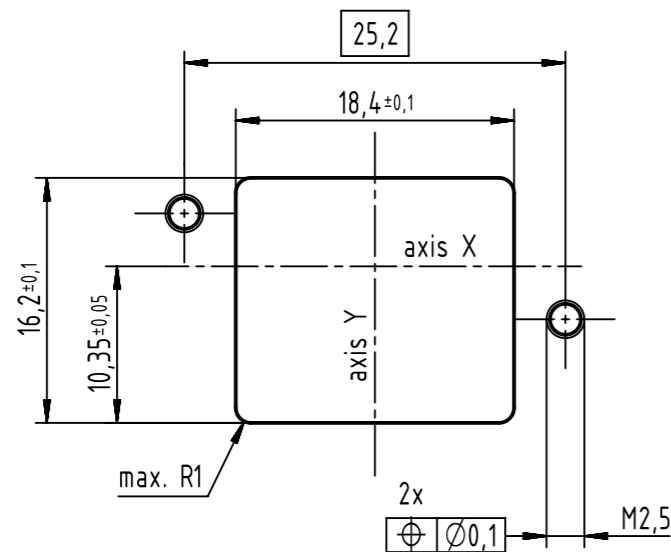


panel cutting



connector pitch on panel:
axis X = 27mm and axis Y = 21mm 2

panel thickness = max. 3.5mm
no limit with pre-assembled
RJ45 Adapter

2 connector pitch with coding clip 0945840002X Y = 23mm

1 2x M2.5; screws acc. to ISO 4762;
please order separately; bolting torque 0.3Nm - 0.5Nm

further information see: DS 09456101000

	All Dimensions in mm Original Size DIN A3	Scale 2:1	Free size tol.	Ref. Sub.
	All rights reserved Department EL PD	Created by ELLERMANN	Inspected by ZWÄHR	Standardisation KÖHLER
HARTING Electronics GmbH D-32339 Espelkamp	Title HARTING PushPull V4 Compact Housing with RJ45	Date 2018-05-30	State Final Release	Doc-Key / ECM-Nr. 100671787/UGD/000/C 500000135700
	Type TB	Number 09452451561	Rev. C	Page 1/1