

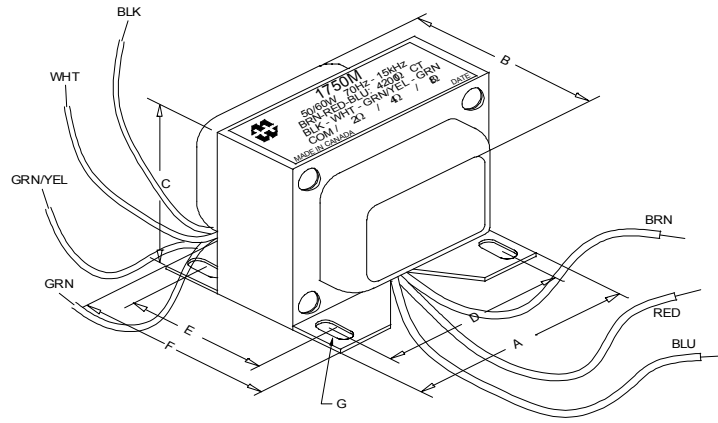
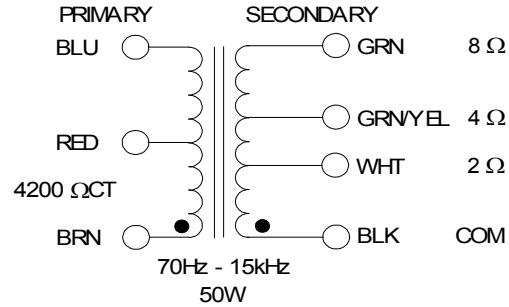
1750M

TUBE GUITAR AMPLIFIER - OUTPUT TRANSFORMER

- Designed for drop in replacement of original units.
- Constructed to look similar to original factory units (where possible).
- Material used & design specifications were kept as close as possible to the original part to preserve the stock "tone".
- Open style with minimum 9" long primary and secondary leads
- Frequency response 70Hz - 15KHz (0/-1dB reference @ 1KHz)
- Distortion is less than 1% @ 70Hz

ELECTRICAL SPECIFICATIONS

Characteristics		Typical
Input Impedance		4200 Ohms
Output Impedance		2, 4 & 8 Ohms
Output Power		50 W
DCR		
Primary Brown-Blue		68.0 Ohms
Secondary Black-White		0.235 Ohm
Secondary Black-Grn/Yel		0.302 Ohm
Secondary Black-Green		0.355 Ohm
Inductance	Impedance	@ 1.0 kHz, 1.0 V OC
Primary Brown-Blue	5.60 H	35.6 KOhm
Secondary Black-White	8.53 mH	88.34 Ohm
Secondary Black-Grn/Yel	17.08 mH	154.20 Ohm
Secondary Black-Green	32.63 mH	275.10 Ohm
Leakage Inductance		@ 1.0 kHz, 1.0 V SC
Primary Brown-Blue		8.03 mH
Dielectric Strength		2000VRMS
Temperature Range		-40 to 105 degC



NOTE: ALL LEADS 9.0" OUT MIN.

Dimensions			
A	4.050" ±0.063	E	2.000" ±0.063
B	3.220" ±0.125	F	2.510" ±0.063
C	3.500" ±0.063	G	0.187" X 0.300"
D	3.500" ±0.063		±0.015

TEST CONDITIONS

Measurement instruments:

D scope series iii audio analyzer
Wayne Kerr 3255B with a 3265B

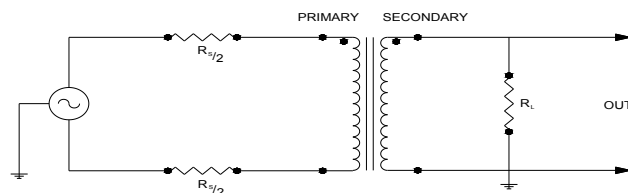
Keithley 2010 DVM

Hp4192a impedance analyzer

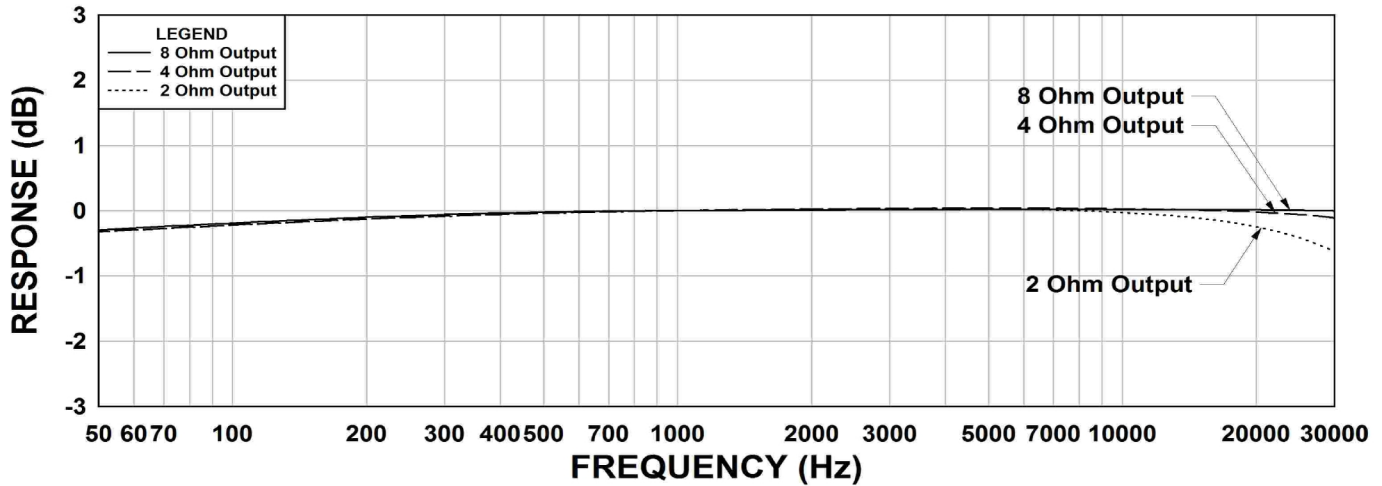
* All graphs input level 27dBu @1.0KHz reference.

**The results are typical and are subject to normal manufacturing and electrical tolerances.

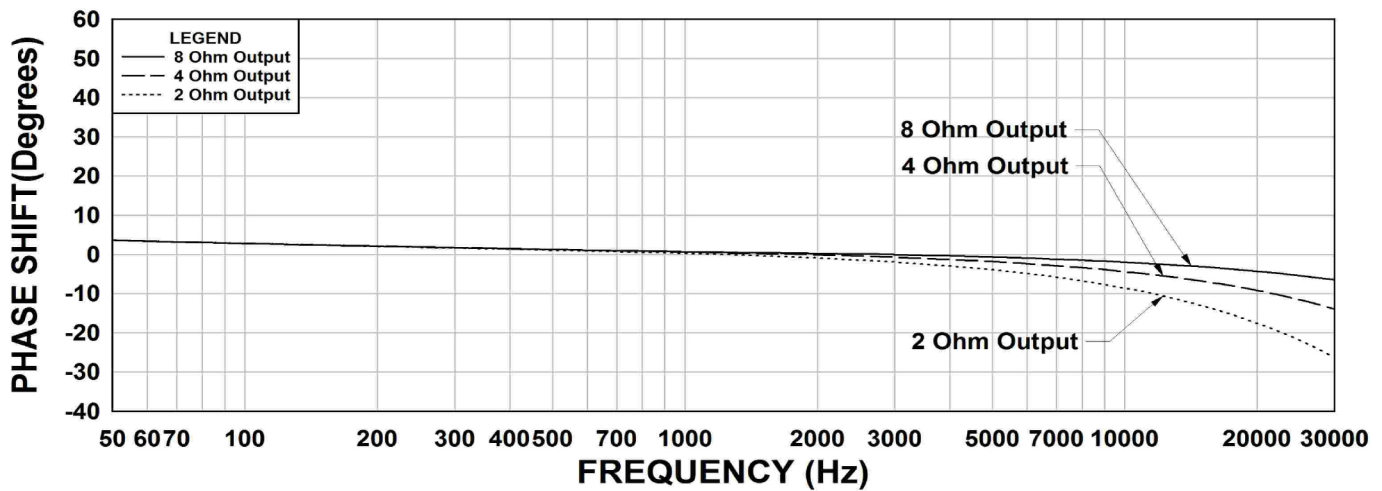
TYPICAL TEST CIRCUIT



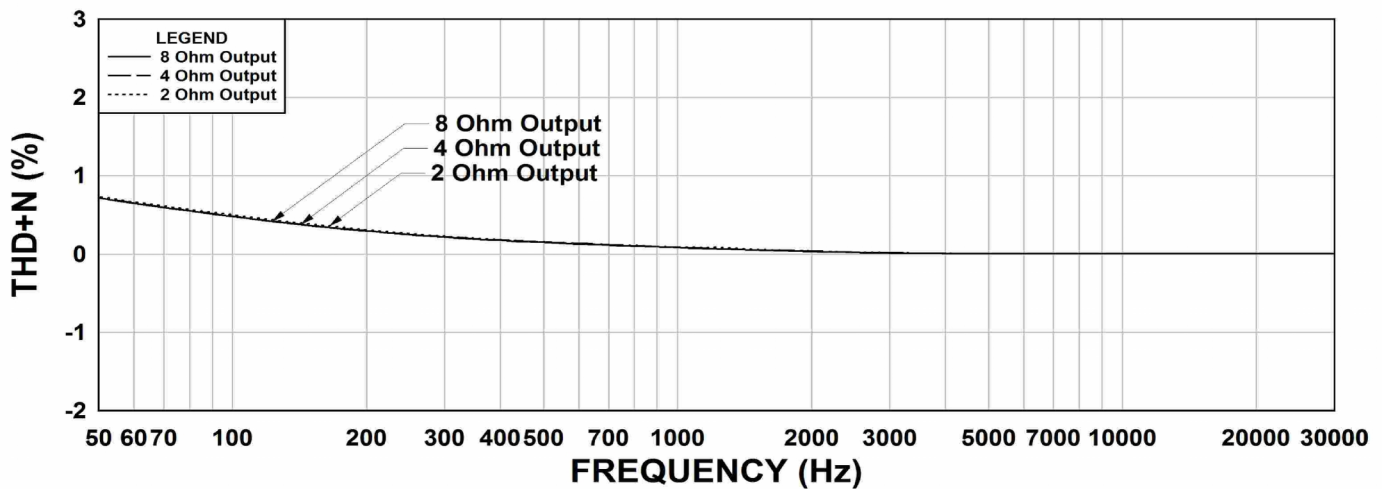
1750M Frequency Response RS = 4200 Ohm



1750M Phase Shift RS = 4200 Ohm



1750M THD+N RS = 4200 Ohm



This drawing and the information in it is the property of Hammond Manufacturing. It may not be reproduced, transmitted or used in any manner whatsoever without the written permission of Hammond Manufacturing. Data subject to change without notice.