


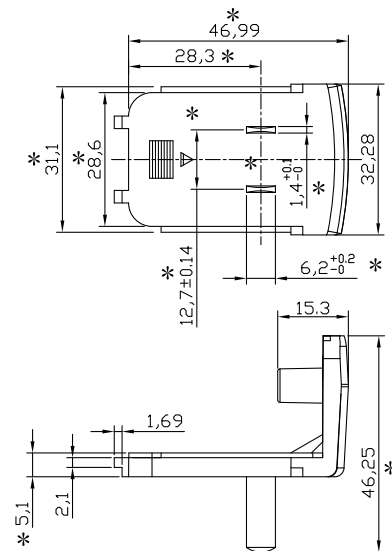
PROPRIETARY INFORMATION:

PROPRIETARY OF GLOBTEK, INC. ANY REPRODUCTION, DISCLOSURE OR USE OF THIS DRAWING, IN WHOLE OR IN PART, IS HEREBY PROHIBITED EXCEPT AS SPECIFIED IN WRITING BY GLOBTEK, INC.

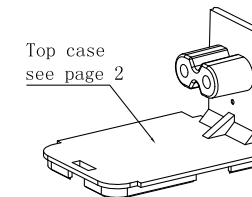
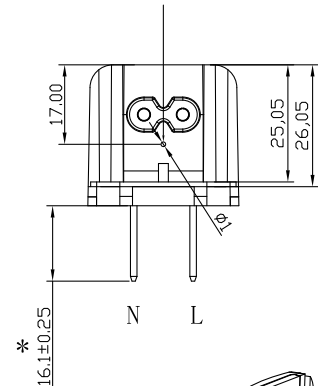
REVISION

REV	DESCRIPTION	DATE	APPROVED
A	INITIAL RELEASE, RFS. 26836	07/21/17	MK

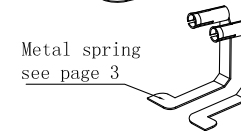
*  The pins L-L, N-N need to pass continuity test and short test



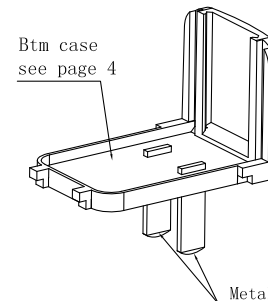
Mark for modification, dia: Ø1.0mm sink: 0.2mm



Top case
see page 2

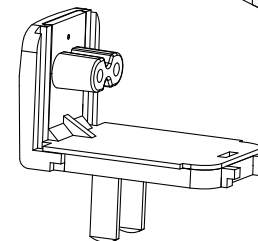


Metal spring
see page 3



Btm case
see page 4

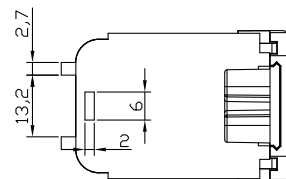
Metal pin




RELEASED

By N.Frost at 1:40 pm, Jul 21, 2017

- NOTE:
1. MATERIAL: SABIC PC945 94-V0
 2. Can not use the recycling material
 3. The color is BLACK
 4. Finish: texture MT 11040
 5. The "*" is important dimension
 6. No labe tolerance refer to tolerance sheet



DASH NO.	PART NO	REV.	DESCRIPTION	NOTES
TABULATION BLOCK				
		TOLERANCES: DECIMALS ANGULAR .xx +/- 0.1 +/- 1° .xxx +/- .005		
		MILLIMETERS ANGULAR .xx +/- 0.3 +/- 1° .xxx +/- .013		
		 186 Veterans Dr. Northvale, NJ 07647 Tel. 201-784-1000 Fax 201.784.0111		
INIT.BY: MK	DATE: 07/21/17	DWG TITLE: CHANGEABLE BLADE R-CN-2		
DRAWN: NF	DATE: 07/21/17	FSCN No.: G, CC	SIZE A	MODEL:
APRVD: MK	DATE: 07/21/17	SCALE: NONE	PART NO: R-CN-2(R)	REV. A
		SHEET 1/1		

Foot Note:
Globtek Inc. will not be liable for the safety and performance of these power product if unauthorized access and repair occurs. End user should consult the applicable UL, CSA or EN Standards for proper installation instruction.

Limitation of Use:
Globtek product are not authorized for use as mission critical components in life support, hazardous environment, nuclear or aircraft applications without prior written approval from the CEO of Globtek Inc.

Contents of this document are subject to change without prior notice