

EP Cores (6598130121)

Part Number: 6598130121

98 EP CORE SET

EP designs reduce the effect of residual air gap upon the effective permeability of the core, hence they minimize coil volume for a given inductance. EP cores also provide a high degree of isolation from adjacent components and are advantageously used in low power devices, matching and broadband transformers.

□ EP cores can be supplied with the center post gapped to a mechanical dimension or an A_L value.

[Catalog Drawing](#)

[3D Model](#)

Weight indicates is per pair or set.

Weight: 2.35 (g)

Dim	mm	mm tol	nominal inch	inch misc.
A	12.5	± 0.30	0.492	—
B	6.5	± 0.30	0.256	—
C	8.8	± 0.20	0.346	—
D	4.7	± 0.20	0.185	—
E	10	± 0.30	0.394	—
F	4.4	± 0.20	0.173	—
K	2.50	min	0.098	—

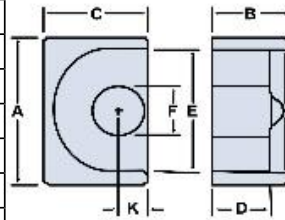



Chart Legend

$\Sigma l / A$: Core Constant, l_e : Effective Path Length, A_e : Effective Cross- Sectional Area, V_e :

Effective Core Volume

A_L : Inductance Factor 

Explanation of Part Numbers: Digits 1 & 2 = product class and 3 & 4 = material grade.

Electrical Properties	
A_L (nH)	1650 ±25%
A_e (cm ²)	0.197
$\Sigma l / A$ (cm ⁻¹)	11.8
l_e (cm)	2.32
V_e (cm ³)	0.457
A_{min} (cm ²)	0.148

A_L value is measured at 1 kHz, B < 10 gauss