

## EP Cores (6595130121)



Part Number: 6595130121

95 EP CORE SET

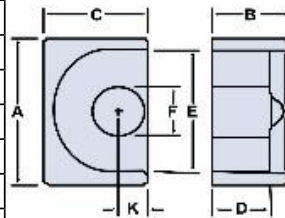
**EP designs reduce the effect of residual air gap upon the effective permeability of the core, hence they minimize coil volume for a given inductance. EP cores also provide a high degree of isolation from adjacent components and are advantageously used in low power devices, matching and broadband transformers.**

□ EP cores can be supplied with the center post gapped to a mechanical dimension or an  $A_L$  value.

Weight indicates is per pair or set.


Weight: 2.35 (g)

Dim	mm	mm tol	nominal inch	inch misc.
A	12.5	± 0.30	0.492	—
B	6.5	± 0.30	0.256	—
C	8.8	± 0.20	0.346	—
D	4.7	± 0.20	0.185	—
E	10	± 0.30	0.394	—
F	4.4	± 0.20	0.173	—
K	2.5	min	0.098	—



### Chart Legend

$\Sigma l / A$  : Core Constant,  $l_e$  : Effective Path Length,  $A_e$  : Effective Cross- Sectional Area,  $V_e$  : Effective Core Volume

$A_L$  : Inductance Factor 

Explanation of Part Numbers: Digits 1 & 2 = product class and 3 & 4 = material grade.

Electrical Properties	
$A_L$ (nH)	1800 ±25%
$A_e$ (cm <sup>2</sup> )	0.197
$\Sigma l / A$ (cm <sup>-1</sup> )	11.8
$l_e$ (cm)	2.32
$V_e$ (cm <sup>3</sup> )	0.457
$A_{min}$ (cm <sup>2</sup> )	0.148

$A_L$  value is measured at 1 kHz, B < 10 gauss