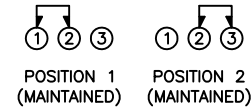


SCHEMATIC



SPECIFICATIONS

FUNCTION:
1P2T ON-ON

RATINGS:
0.5A 50VDC

OPERATING FORCE:
200gf \pm 150gf

CONTACT RESISTANCE:
Initial: 30m Ω Max.

INSULATION RESISTANCE:
500M Ω Min. at 500VDC

DIELECTRIC STRENGTH:
500VAC For 1 Minute

ELECTRICAL LIFE:
10,000 Cycles

SOLDERABILITY:
230°C Max. for 5 Seconds

APPROVALS:

RoHS LEAD FREE
COMPLIANT PROCESS COMPATIBLE

MATERIALS

UPPER BODY:

Polyoxymethylene (POM)
(TYSTRON POM7520), UL94 HB

LOWER BODY:

Glass Filled Nylon

ACTUATOR:

Polyoxymethylene (POM)
(TYSTRON POM7520), UL94 HB

CONTACT:

Silver Plated Phosphor Bronze (C5210R)

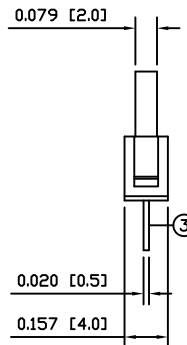
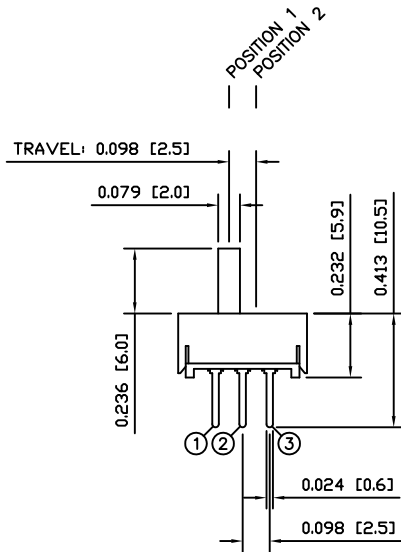
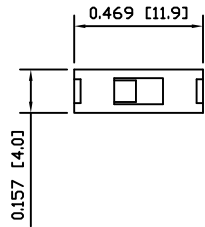
TERMINALS:

Silver Plated Brass (C2680R)

COLORS

BODY:
Black

ACTUATOR:
Black



SUGGESTED PCB LAYOUT



THE INFORMATION CONTAINED IN THIS DOCUMENT IS PROPRIETARY TO E-SWITCH AND IS NOT TO BE COPIED OR TRANSFERRED

B	CORRECTED ACTUATOR LENGTH FROM 5MM TO 6MM	19854	11/02/03	CAB
A	INITIAL RELEASE	19493	10/12/02	CAB
REV.	DESCRIPTION	PCR	DATE	DRAWN BY

DIMENSIONS	INCHES [MILLIMETERS]
GENERAL TOLERANCES	± 0.008 [± 0.2] / $\pm 1^\circ$
SCALE	DRAWING NOT TO SCALE



E-SWITCH®



SS-12E01-G(B)6-00



ITEM NUMBER
03-SS12E01GB600

DATE
FEBRUARY 3, 2011

REVISION
B