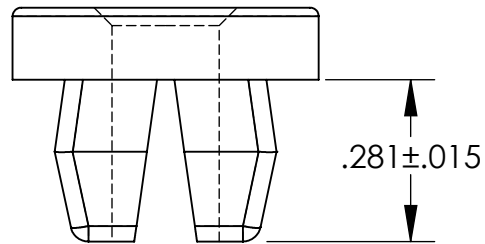
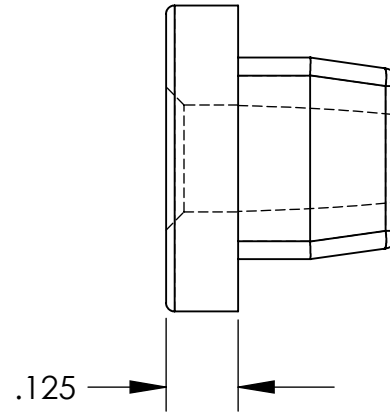
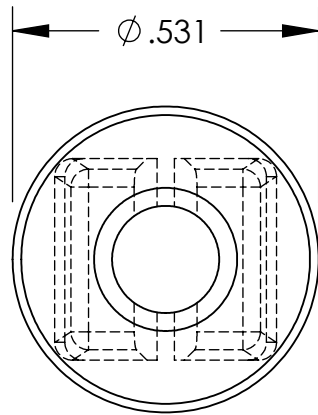


UNCONTROLLED DOCUMENT



NOTES:
 HOLE SIZE .350 / .355
 PANEL THICKNESS RANGE .032 / .125
 SCREW SIZE #12

TOLERANCES UNLESS NOTED

- ±.005 ON DIMENSIONS THRU .625
- ±.008 ON DIMENSIONS .626 THRU 1.000
- ±.010 ON DIMENSIONS 1.001 THRU 1.500
- ±.015 ON DIMENSIONS LARGER THAN 1.500
- ±.015 ON FRACTIONAL DIMENSIONS

WE RESERVE THE RIGHT
 TO DISCONTINUE ITEMS,
 CHANGE SPECIFICATIONS
 OR DESIGN AT ANY TIME
 WITHOUT NOTICE AND
 WITHOUT INCURRING
 ANY OBLIGATIONS

PROPERTY OF
MICRO PLASTICS INC.

CATALOG DRAWING
 ROUND HEAD GROMMET NUTS
 MICRO P/N 60SGN01121
 DWG. # 60SGN01121
 FILE SERVER\ENG\WEB

MATERIAL: NYLON 6/6

DATE	SCALE 3:1	DB
------	--------------	-----------