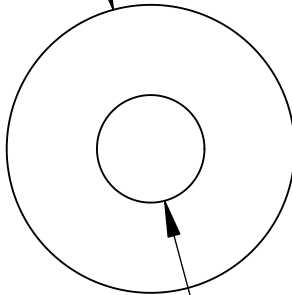


# UNCONTROLLED DOCUMENT

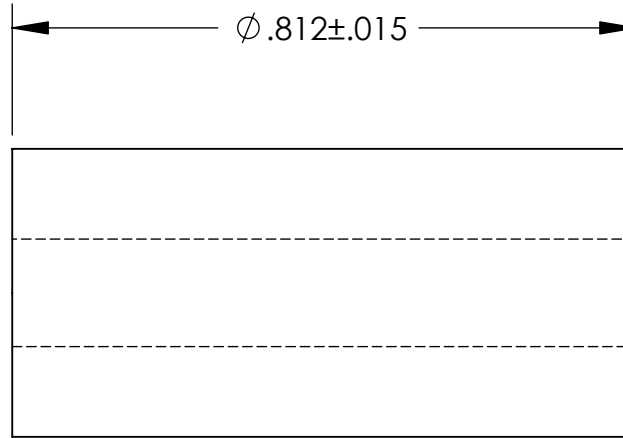
NOTES:  
SCREW - #6

$\phi .375 \pm .015$



$\phi .140$

$\phi .812 \pm .015$



## TOLERANCES UNLESS NOTED

$\pm .005$  ON DIMENSIONS THRU  $.625$   
 $\pm .008$  ON DIMENSIONS  $.626$  THRU  $1.000$   
 $\pm .010$  ON DIMENSIONS  $1.001$  THRU  $1.500$   
 $\pm .015$  ON DIMENSIONS LARGER THAN  $1.500$   
 $\pm .015$  ON FRACTIONAL DIMENSIONS

WE RESERVE THE RIGHT  
TO DISCONTINUE ITEMS,  
CHANGE SPECIFICATIONS  
OR DESIGN AT ANY TIME  
WITHOUT NOTICE AND  
WITHOUT INCURRING  
ANY OBLIGATIONS

PROPERTY OF  
**MICRO PLASTICS INC.**

CATALOG DRAWING  
STANDARD SPACER  
MICRO P/N 13SP191  
DWG. # 13SP191  
FILE SERVER\ENG\WEB

MATERIAL: 6/6 NYLON

DATE

SCALE  
4:1

**TA**