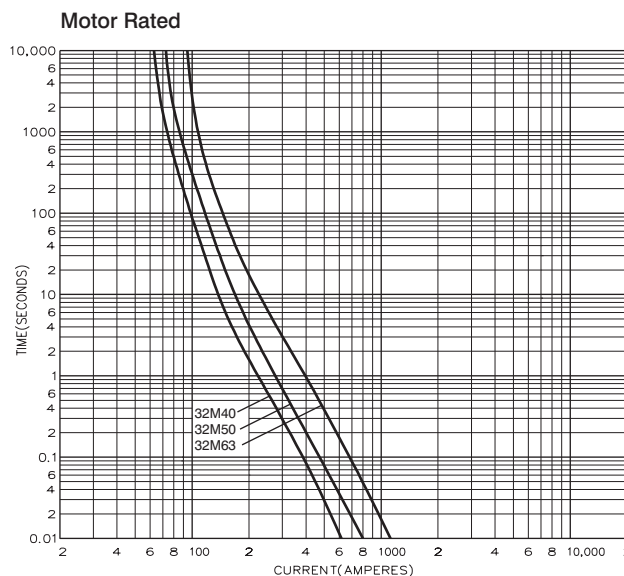
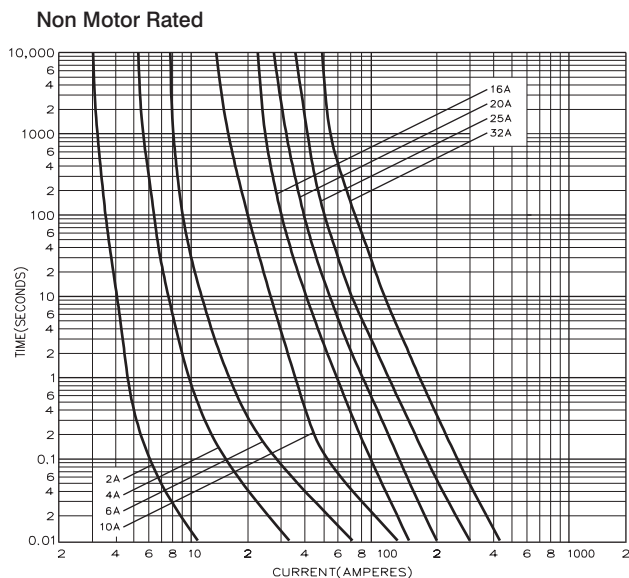


BS88, IEC269 Industrial HRC Fuse Links

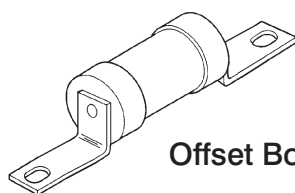
Offset Bolted Tags 550V ac 2-32 Amps

AAO

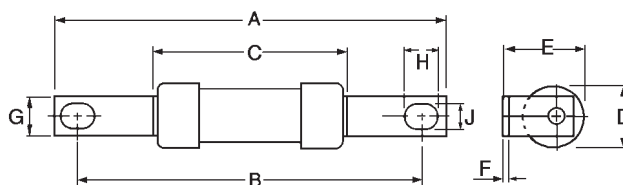
Time-Current Characteristic Curves



Dimensional Data



Offset Bolted Tag



Catalog Number	I ² t (Amps ² Seconds)			Nom. Watts Loss	Rated Voltage	Dimensions (mm)								
	Amp Ratings	Pre-Arcing	Total at 415V			A	B	C	D	E	F	G	H	J
AAO2	2	1.4	4.7	0.9	550 ac	85.0	73.5	35.5	13.7	14.0	1.2	8.7	8.0	5.5
AAO4	4	7.8	26	1.4										
AAO6	6	28	100	1.8										
AAO10	10	125	400	2.1										
AAO16	16	120	470	1.8										
AAO20	20	260	1000	1.8										
AAO25	25	570	2300	2										
AAO32	32	710	3000	2.9										
AAO32M40	32M40	1400	3800	3				54.5	21.0	22.3				
AAO32M50	32M50	3000	8500	2										
AAO32M63	32M63	7000	18000	1.4										

Packaging - 20 per carton

This bulletin is intended to clearly present comprehensive product data and provide technical information that will help the end user with design applications. Bussmann reserves the right, without notice, to change design or construction of any products and to discontinue or limit distribution of any products. Bussmann also reserves the right to change or update, without notice, any technical information contained in this bulletin. Once a product has been selected, it should be tested by the user in all possible applications.

Bussmann Division
Cooper (U.K.) Ltd
 Burton-on-the-Wolds
 Leicestershire, LE12 5TH
 United Kingdom
 Tel: (44) (0)1509 88 27 37
 Fax: (44) (0)1509 88 27 86

Head Office
 St. Louis, MO, U.S.A. Tel: (314) 527-3877 Fax: (800) 544-2570 International Fax: (314) 527-1445



Bussmann Information Fax (00 1) 314 527 1450
 Bussmann WEB site - <http://www.bussmann.com>