

# EAO – Your Expert Partner for Human Machine Interfaces

## 821-.401-00 - Keylock switch actuator 2 positions maintain round, Func. 1, 3

### 821-.401-00 - Keylock switch actuator 2 positions maintain round, Func. 1, 3



*Attention: The preview is based on a sample product. This can differ from your current configuration.*

#### Mounting

Mounting cut-out	Ø 16 mm
Design	raised

#### Front

Front dimension	Ø 24 mm
Front shape	round

#### Other Attributes

Weight	0,026 kg
--------	----------

#### Operating-/Indication part

Switching angle	90° right
-----------------	-----------

#### IP-Rating

Front protection	IP40
------------------	------

#### Connection Method

Terminal	Solder 2.8 x 0.5 mm
----------	---------------------

#### Actuator

Switching action	Rest(a) - Maintain
------------------	--------------------

#### Switching element

Rotary positions	2
Switching system	Snap-action switching element
Contacts	1 NC + 1 NO
Switching current	5 A
Contact material	
Switching voltage	250 V AC

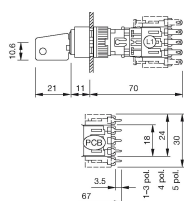
#### Function

Keylock switch	
----------------	--

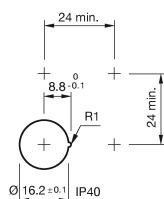
# EAO – Your Expert Partner for Human Machine Interfaces

821-.401-00 - Keylock switch actuator 2 positions maintain round, Func. 1, 3

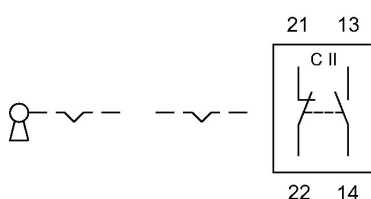
## Dimensions



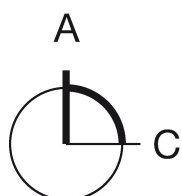
## Mounting cut-outs



## Wiring diagram



## Switching positions



## Additional information

Standard lock B2 300

Further lock numbers see «Technical data»

Use the location strip no. 260-0020-00 for anti-twisting of the front bezel. At momentary position the overturning force is max. 60 Ncm.

Functions see chapter «Application guidelines»

## Legend

Contacts: NC = Normally closed, NO = Normally open

Switching action: A = Rest, C = Maintained