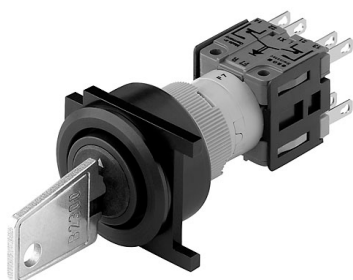


# EAO – Your Expert Partner for Human Machine Interfaces

## 771-.401-WP - Keylock switch actuator 2 positions round

### 771-.401-WP - Keylock switch actuator 2 positions round



*Attention: The preview is based on a sample product. This can differ from your current configuration.*

#### Mounting

Mounting cut-out  
Design Ø 22,3 mm  
flush

#### Front

Front dimension  
Front shape Ø 25 mm  
round

#### Other Attributes

Weight 0,022 kg

#### Operating-/Indication part

Switching angle 90° right

#### IP-Rating

Front protection IP65

#### Connection Method

Terminal PCB

#### Actuator

Switching action Rest(a) - Maintain

#### Switching element

Rotary positions 2  
Switching system Snap-action switching element  
Contacts 1 NC + 1 NO  
Switching current 5 A  
Contact material  
Switching voltage 250 V AC

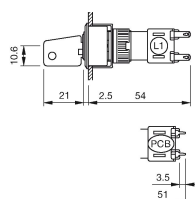
#### Function

Keylock switch

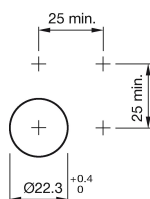
# EAO – Your Expert Partner for Human Machine Interfaces

## 771-.401-WP - Keylock switch actuator 2 positions round

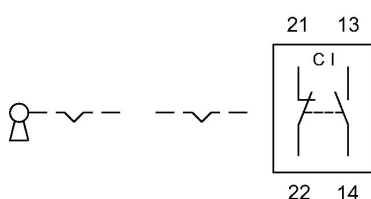
### Dimensions



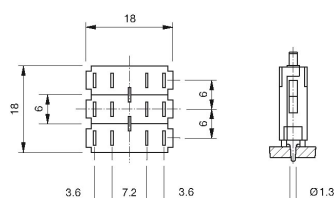
### Mounting cut-outs



### Wiring diagram



### Component layout



### Additional information

Standard lock B2 300

Further lock numbers see «Technical data»

Use the location strip no. 260-0020-00 for anti-twisting of the front bezel. At momentary position the overturning force is max. 60 Ncm.

### Legend

Contacts: NC = Normally closed, NO = Normally open

Switching action: A = Rest, C = Maintained

# EAO – Your Expert Partner for **Human Machine Interfaces**

771-.401-WP - Keylock switch actuator 2 positions round

## Switching positions

