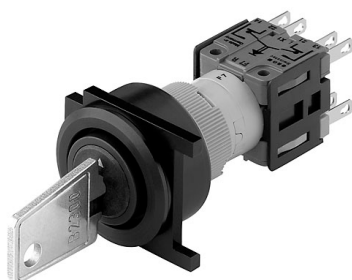


EAO – Your Expert Partner for Human Machine Interfaces

712-.401-WP - Keylock switch actuator 3 positions round

712-.401-WP - Keylock switch actuator 3 positions round



Attention: The preview is based on a sample product. This can differ from your current configuration.

Mounting

Mounting cut-out
Design Ø 22,3 mm
flush

Front

Front dimension
Front shape Ø 25 mm
round

Other Attributes

Weight 0,023 kg

Operating-/Indication part

Switching angle

IP-Rating

Front protection IP65

Connection Method

Terminal PCB

Actuator

Switching action Maintain(a) - Rest(a) - Maintain(a)

Switching element

Rotary positions 3
Switching system Snap-action switching element
Contacts 2 NC + 2 NO
Switching current 5 A
Contact material
Switching voltage 250 V AC

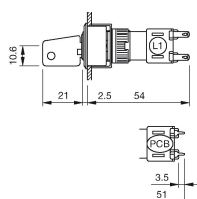
Function

Keylock switch

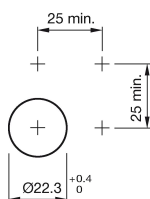
EAO – Your Expert Partner for Human Machine Interfaces

712-.401-WP - Keylock switch actuator 3 positions round

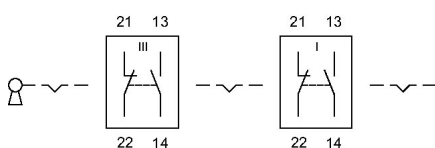
Dimensions



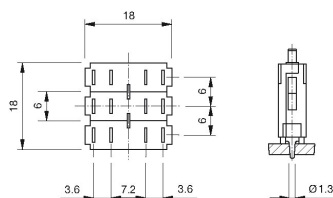
Mounting cut-outs



Wiring diagram



Component layout



Additional information

Keylock number B2 300

Other key remove and key lock number on request

Use the location strip no. 260-0020-00 for anti-twisting of the front bezel. At momentary position the overturning force is max. 60 Ncm.

Legend

Contacts: NC = Normally closed, NO = Normally open

Switching action: A = Rest, C = Maintained

EAO – Your Expert Partner for **Human Machine Interfaces**

712-.401-WP - Keylock switch actuator 3 positions round

Switching positions

