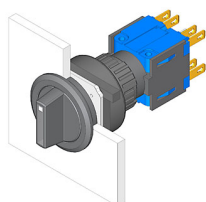


EAO – Your Expert Partner for Human Machine Interfaces

52-571.022A - Selector switch actuator 3 positions round, flush design

52-571.022A - Selector switch actuator 3 positions round, flush design



Attention: The preview is based on a sample product. This can differ from your current configuration.

Other Attributes

Weight 0.015 kg

Operating-/Indication part

Switching angle C = 90° / 90°

IP-Rating

Front protection IP40

Connection Method

Terminal Solder 2.8 x 0.5 mm

Actuator

Switching action Maintained - Rest - Maintained

Switching element

Rotary positions 3
Switching system Snap-action switching element
Contacts 2 NC + 2 NO
Switching current 5 A
Contact material Gold
Switching voltage 250 V AC

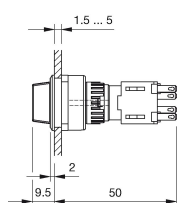
Function

Selector switch

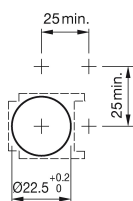
EAO – Your Expert Partner for Human Machine Interfaces

52-571.022A - Selector switch actuator 3 positions round, flush design

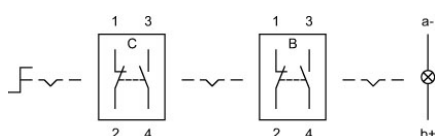
Dimensions



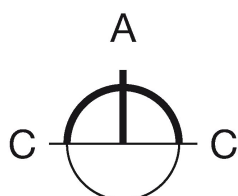
Mounting cut-outs



Wiring diagram



Switching positions



Additional information

illuminative

Legend

Contacts: NC = Normally closed, NO = Normally open
Switching action: A = Rest, C = Maintained