

EAO – Your Expert Partner for Human Machine Interfaces

51-407.036D - Keylock switch 2 positions rectangular - Actuator

51-407.036D - Keylock switch 2 positions rectangular - Actuator



Attention: The preview is based on a sample product. This can differ from your current configuration.

Attribute

Design	raised
Front dimension	24 mm x 18 mm
Front form	rectangular
IP front protection	IP65
Mounting cut-out	Ø 16 mm
Contacts	2 NO
Contact material	Gold
Rotary positions	2
Switching action	Rest - Maintained (a)
Switching angle	90° right
Switching current	0.1 A
Switching system	Low-level element
Switching voltage	42 V
Terminal	Universal terminal
Weight	0.016 kg
Switching rating	42 V @ 0,1 A

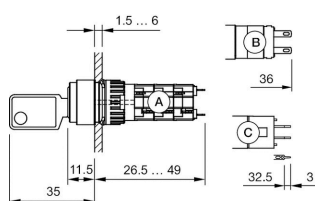
Function

Keylock switch

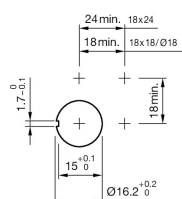
EAO – Your Expert Partner for Human Machine Interfaces

51-407.036D - Keylock switch 2 positions rectangular - Actuator

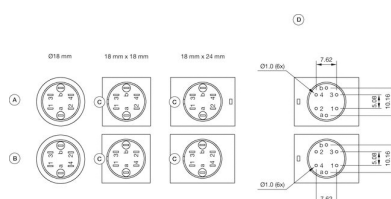
Dimensions



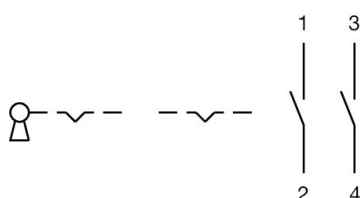
Mounting cut-outs



Component layouts



Wiring diagrams



Additional information

Standard lock: DOM 311

Front plastic black

a = Key remove

Contacts: NC = Normally closed, NO = Normally open

Standard lock: DOM 311

Contacts: NO = Normally open

a = Key remove