

EAO – Your Expert Partner for Human Machine Interfaces

51-145.025D2 - Keylock switch 2 positions square - Actuator

51-145.025D2 - Keylock switch 2 positions square - Actuator



Attention: The preview is based on a sample product. This can differ from your current configuration.

Attribute

| | |
|---------------------|-------------------------------|
| Design | raised |
| Front dimension | 18 mm x 18 mm |
| Front form | square |
| IP front protection | IP65 |
| Mounting cut-out | Ø 16 mm |
| Contact material | Gold |
| Rotary positions | 2 |
| Switching action | Rest (a) - Momentary |
| Switching angle | 42° right |
| Switching current | 5 A |
| Switching system | Snap-action switching element |
| Switching voltage | 250 V |
| Terminal | Soldering terminal |
| Weight | 0.026 kg |
| Switching rating | 250 V @ 5 A |
| Contacts | 1 NC / 1 NO |

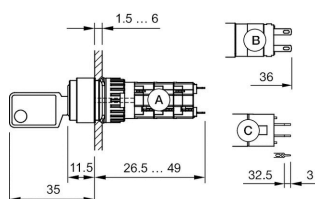
Function

Keylock switch

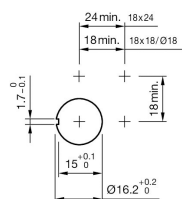
EAO – Your Expert Partner for Human Machine Interfaces

51-145.025D2 - Keylock switch 2 positions square - Actuator

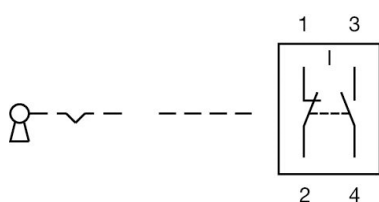
Dimensions



Mounting cut-outs



Wiring diagrams



Additional information

Standard lock: DOM 311

Front plastic black

a = Key remove

Contacts: NC = Normally closed, NO = Normally open

Standard lock: DOM 311

Contacts: NC = Normally closed, NO = Normally open

a = Key remove