

# EAO – Your Expert Partner for Human Machine Interfaces

## 51-142.025D2 - Keylock switch 2 positions round - Actuator

### 51-142.025D2 - Keylock switch 2 positions round - Actuator



*Attention: The preview is based on a sample product. This can differ from your current configuration.*

#### Attribute

Design	raised
Front dimension	Ø 18 mm
Front form	round
IP front protection	IP65
Mounting cut-out	Ø 16 mm
Contacts	2 NC / 2 NO
Contact material	Gold
Rotary positions	2
Switching action	Rest (a) - Momentary
Switching angle	42° right
Switching current	5 A
Switching system	Snap-action switching element
Switching voltage	250 V
Terminal	Soldering terminal
Weight	0.026 kg
Switching rating	250 V @ 5 A

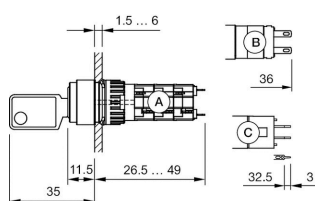
#### Function

Keylock switch

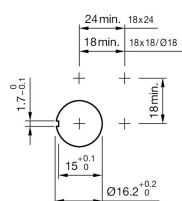
# EAO – Your Expert Partner for Human Machine Interfaces

## 51-142.025D2 - Keylock switch 2 positions round - Actuator

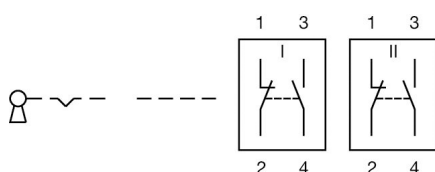
### Dimensions



### Mounting cut-outs



### Wiring diagrams



### Additional information

Standard lock: DOM 311

Front plastic black

a = Key remove

Contacts: NC = Normally closed, NO = Normally open

Standard lock: DOM 311

Contacts: NC = Normally closed, NO = Normally open

a = Key remove