



FM SERIES

10 AMP and 20 AMP

FILTER MODULE



FEATURES

- * Compact Size 2"x1", 2"x1.6"
- * PCB Mount
- * 10A and 20A Filter Module
- * 75VDC Input Voltage Maximum
- * Suitable for use with Half Brick And Quarter Brick Series



MODEL NUMBER	INPUT VOLTAGE	INPUT SURGE VOLTAGE	OUTPUT RATED CURRENT	DC RESISTANCE (+Vin to +Vo)	DC RESISTANCE (-Vin to -Vo)
FM10-100	75 VDC max.	100 VDC max.	10 A max.	11.5 mΩ typ.	4.5 mΩ typ.
FM20-100	75 VDC max.	100 VDC max.	20 A max.	9.5 mΩ typ.	5.7 mΩ typ.

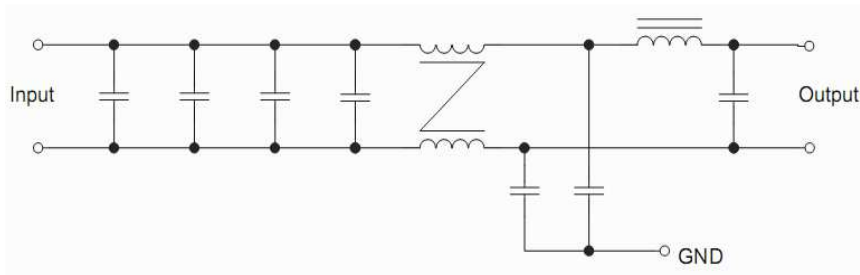


Figure1 Internal Schematic for FM10-100 Module

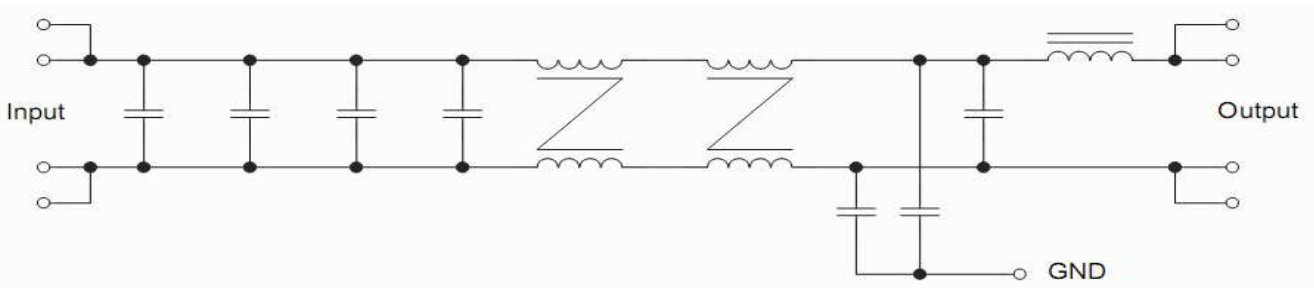


Figure2 Internal Schematic for FM20-100 Module

SPECIFICATIONS

All Specifications Typical At Nominal Line, Full Load, and 25°C Unless Otherwise Noted

INPUT SPECIFICATIONS:

Input Voltage Range 75Vdc max.
 Input Surge Voltage 100Vdc/100ms
 Input Rated Current See Table

GENERAL SPECIFICATIONS:

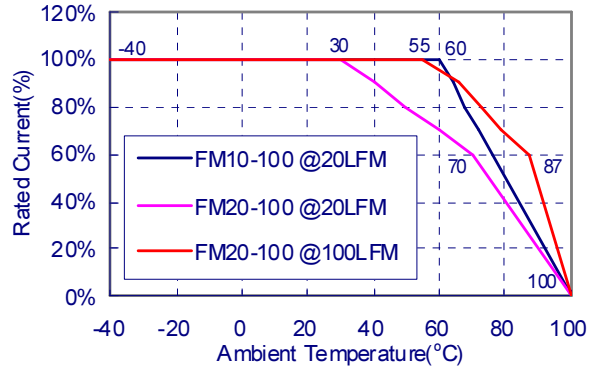
Isolation Voltage Input/GND..... 1500Vdc min.
 Output/GND..... 500Vdc min.
 Isolation Resistance..... 10⁷ohm min.
 DC Resistance..... See Table
 Operating Case Temperature Range (note1) -40°C to +100°C
 Storage Temperature Range -55°C to +105°C

Dimensions:
 FM10: 2.00x1.00x0.46inches (50.8x25.4x11.7 mm)
 FM20: 2.00x1.60x0.50inches (50.8x40.6x12.7 mm)
 Case Materials Plastic Case with Epoxy Potting
 Weight FM10: 30g
 FM20: 55g

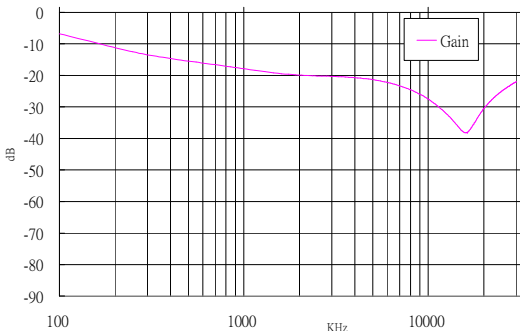
NOTE :

1. Maximum case temperature under any operating condition should not exceed 100°C.

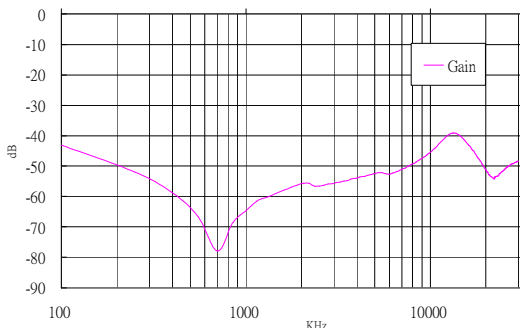
Typical Derating curve for Natural Convection (20LFM)



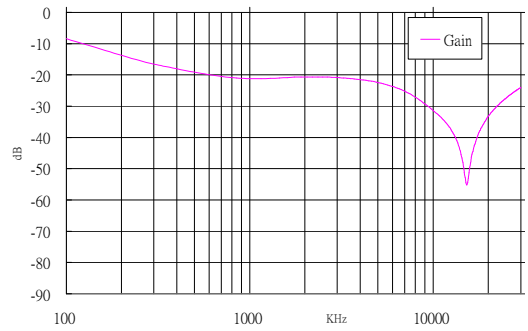
Common-Mode Insertion Loss



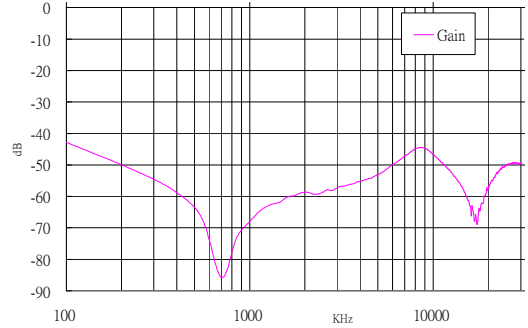
Differential-Mode Insertion Loss



Common-Mode Insertion Loss

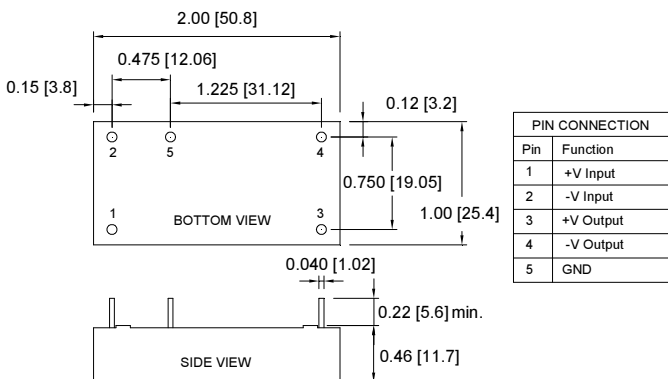


Differential-Mode Insertion Loss



Typical Common-mode and Differential-mode Loss for FM10-100

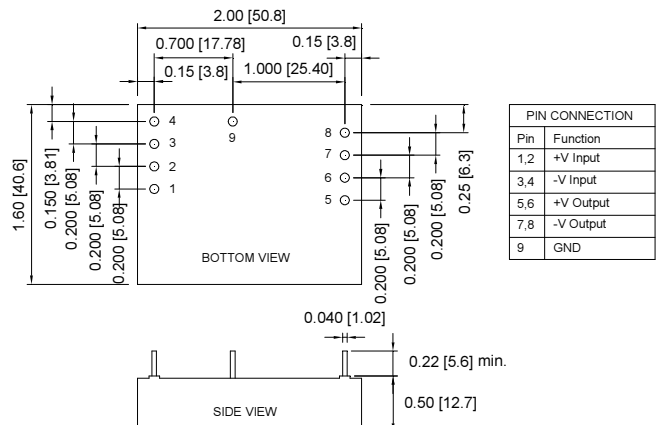
DIMENSIONS:
 NOTE: Pin Size is 0.04" Inch (1.02mm) DIA
 All Dimensions In Inches (mm)
 Tolerances Inches: X.XX= ±0.02 , X.XXX= ±0.010
 Millimeters: X.X= ±0.5 , X.XX= ±0.25



FM10-100 Package

Typical Common-mode and Differential-mode Loss for FM20-100

DIMENSIONS:
 NOTE: Pin Size is 0.04" Inch (1.02mm) DIA
 All Dimensions In Inches (mm)
 Tolerances Inches: X.XX= ±0.02 , X.XXX= ±0.010
 Millimeters: X.X= ±0.5 , X.XX= ±0.25



FM20-100 Package