

FEATURES

150W Constant Voltage LED Driver

LEDWV-150Series

- Ultra High Efficiency (Up to 93%)
- High Power Factor (0.99 Typical)
- Lighting Protection
- Over Voltage, Over Current, Over Temperature and Short Circuit Protection
- Waterproof (IP67)
- RoHs compliance



SPECIFICATION

Model		LEDWV-150S012ST		LEDWV-150S020ST		LEDWV-150S024ST	
Output	Output Voltage	12 Vdc		20 Vdc		24 Vdc	
	Current Range	0~12.5 A		0~7.50 A		0~6.25 A	
	Ripple & Noise	2% Vo					
	Line Regulation	±1%					
	Load Regulation	±2%					
	Turn-on Delay Time	0.9s Typ. Measured at 110Vac input. / 0.5s Typ. Measured at 220Vac input.					
	Voltage Tolerance	-5% Min. / 5% Max					
	Overshoot/ Undershoot	10% When power on or off.					
	Temperature coefficient	0.02%/°C Case temperature = 0°C~Tc max					
Input	Leakage Current	1 mA at 277Vac 60Hz input					
	Voltage	90~305V					
	Frequency	47-63Hz					
	PF	110Vac	0.99	0.99	0.99		
		220Vac	0.97	0.97	0.97		
	THD	20%					
	Inrush Current	65A at 220Vac input, ,25°C cold start, duration=1.2ms, 10%1pk-10%1pk					
AC Current	1.75A measured at full load and 100 Vac input. / 0.8A measured at full load and 220 Vac input.						
Protections	Short Circuit	Protection type : Hiccup mode, recovers automatically after fault condition is removed with no damage to driver					
	Over Temperature	110 °C Maximum temperature of components inside case					
	Over Voltage	120% Typ. Latch mode. The power supply shall return to normal operation after recycling AC.					
	Over Current	135% Io Typ. Hiccup mode. The power supply shall self-recover when the fault condition is removed.					
Environmental	Temperature Range	Operating	-35°C - +70°C				
		Storage	-40°C - +85°C				
	Case Temperature	90°C					
	Humidity	Operating	10% RH to 100% RH; See derating Curve for more details				
Storage		5% RH to 100 RH					
Safety & EMC	UL/CUL / CE	UL8750,UL1012,CSA-C22.2 No. 107.1 EN61347-1,EN61347-2-13					
	EMI Standards	EN55015, EN61000-3-2, EN61000-3-3					
	EMS Standards	EN61000-4-2, EN61000-4-3, EN61000-4-4, EN61000-4-5, EN61000-4-6, EN61000-4-8, EN61000-4-11, EN61547					
Others	MTBF	260,900 hours					
	Life Time	77,200 hours measured at 220Vac input, 80% load, Case temperature=60°C @ Tc point. See life time vs. curve for details					
	Dimension	Inches (L*W*H)7.83*2.66*1.56 Millimeters (L*W*H) 199*67.5*39.5					
	Weight	1000 g					

FEATURES

150W Constant Voltage LED Driver

LEDWV-150Series

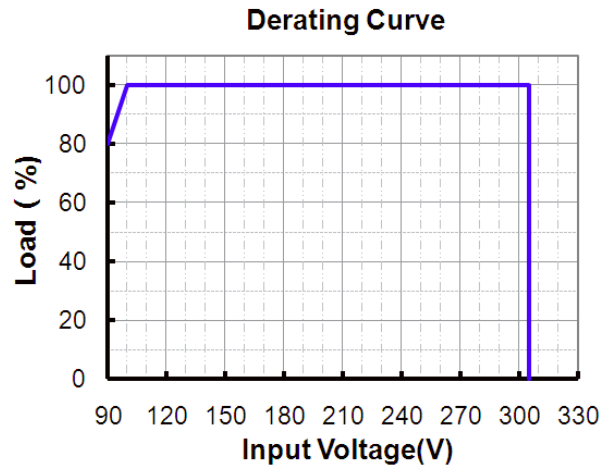
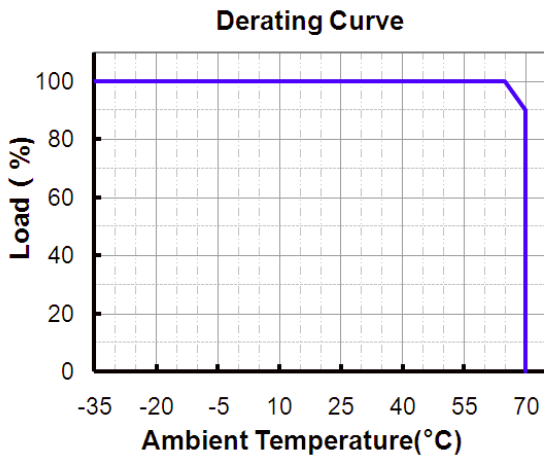
- Ultra High Efficiency (Up to 93%)
- High Power Factor (0.99 Typical)
- Lighting Protection
- Over Voltage, Over Current, Over Temperature and Short Circuit Protection
- Waterproof (IP67)
- RoHs compliance



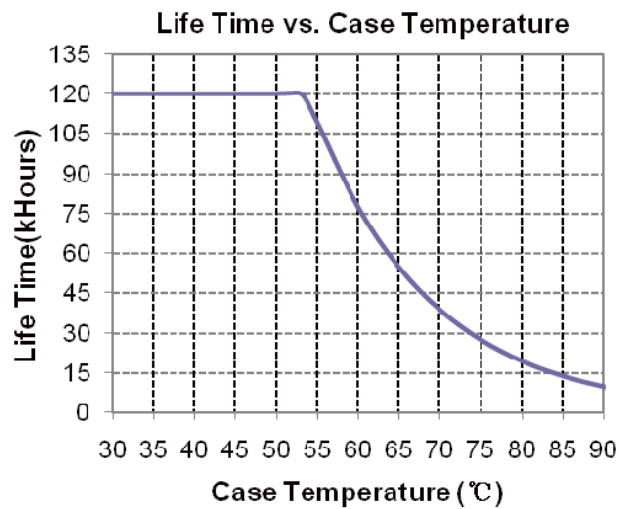
SPECIFICATION

Model		LEDWV-150S036ST		LEDWV-150S048ST		LEDWV-150S054ST	
Output	Output Voltage	36 Vdc		48 Vdc		54 Vdc	
	Current Range	0~4.17 A		0~3.13 A		0~2.78 A	
	Ripple & Noise	2% Vo					
	Line Regulation	±1%					
	Load Regulation	±2%					
	Turn-on Delay Time	0.9s Typ. Measured at 110Vac input. / 0.5s Typ. Measured at 220Vac input.					
	Voltage Tolerance	-5% Min. / 5% Max					
	Overshoot/ Undershoot	10% When power on or off.					
	Temperature coefficient	0.02%/°C Case temperature = 0°C~Tc max					
Input	Leakage Current	1 mA at 277Vac 60Hz input					
	Voltage	90~305V					
	Frequency	47-63Hz					
	PF	110Vac	0.99		0.99		0.99
		220Vac	0.96		0.96		0.96
	THD	20%					
	Inrush Current	65A at 220Vac input, ,25°C cold start, duration=1.2ms, 10%Ipk-10%Ipk					
AC Current (Typ.)	2.3A measured at full load and 100 Vac input. / 1.1A measured at full load and 220 Vac input.						
Protections	Short Circuit	Protection type : Hiccup mode, recovers automatically after fault condition is removed with no damage to driver					
	Over Temperature	110 °C Maximum temperature of components inside case					
	Over Voltage	120% Typ. Latch mode. The power supply shall return to normal operation after recycling AC.					
	Over Current	135% Io Typ. Hiccup mode. The power supply shall self-recover when the fault condition is removed.					
Environmental	Temperature Range	Operating	-35°C - +70°C				
		Storage	-40°C - +85°C				
	Case Temperature	90°C					
	Humidity	Operating	10% RH to 100% RH; See derating Curve for more details				
Storage		5% RH to 100 RH					
Safety & EMC	UL/CUL / CE	UL8750,UL1012,CSA-C22.2 No. 107.1 EN61347-1,EN61347-2-13					
	EMI Standards	EN55015, EN61000-3-2, EN61000-3-3					
	EMS Standards	EN61000-4-2, EN61000-4-3, EN61000-4-4, EN61000-4-5, EN61000-4-6, EN61000-4-8, EN61000-4-11, EN61547					
Others	MTBF	260,900 hours					
	Life Time	77,200 hours measured at 220Vac input, 80% load, Case temperature=60°C @ Tc point. See life time vs. curve for details					
	Dimension	Inches (L*W*H)7.83*2.66*1.56 Millimeters (L*W*H) 199*67.5*39.5					
	Weight	1000 g					

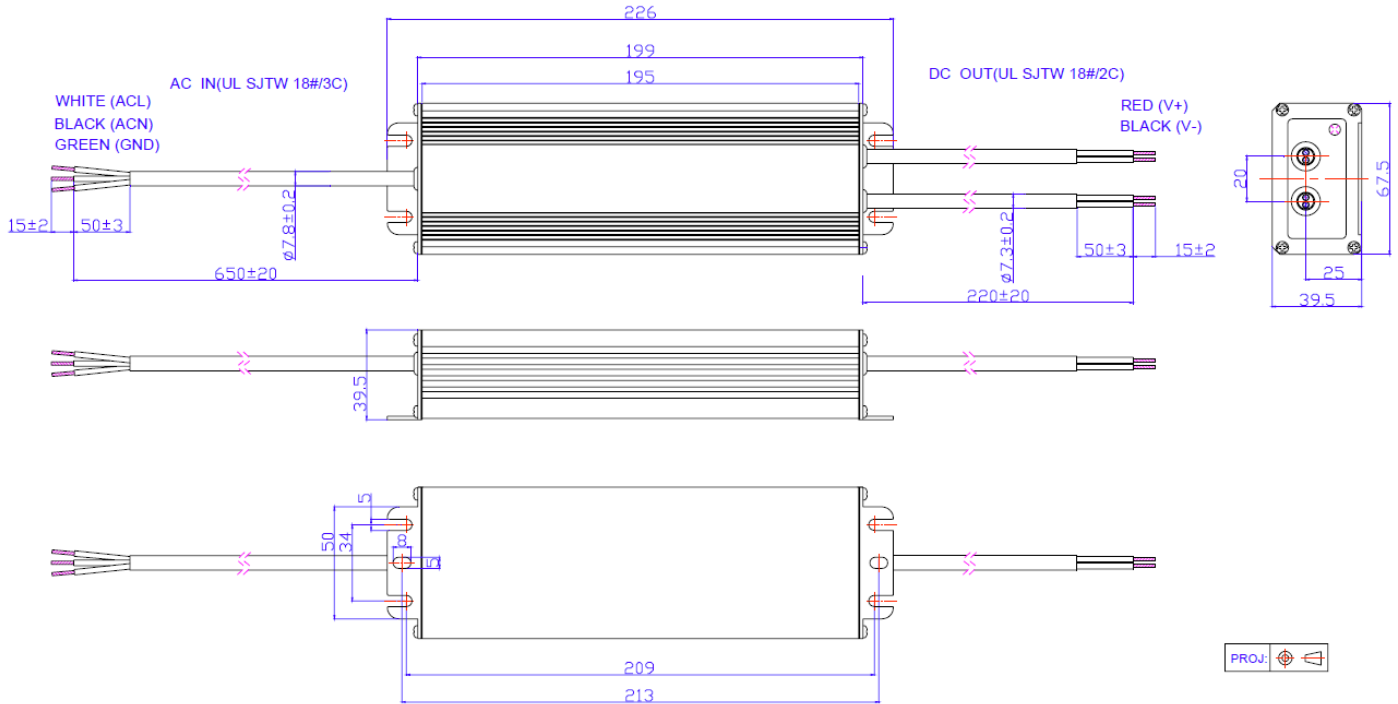
Derating Curve



Life Time vs. Case Temperature Curve

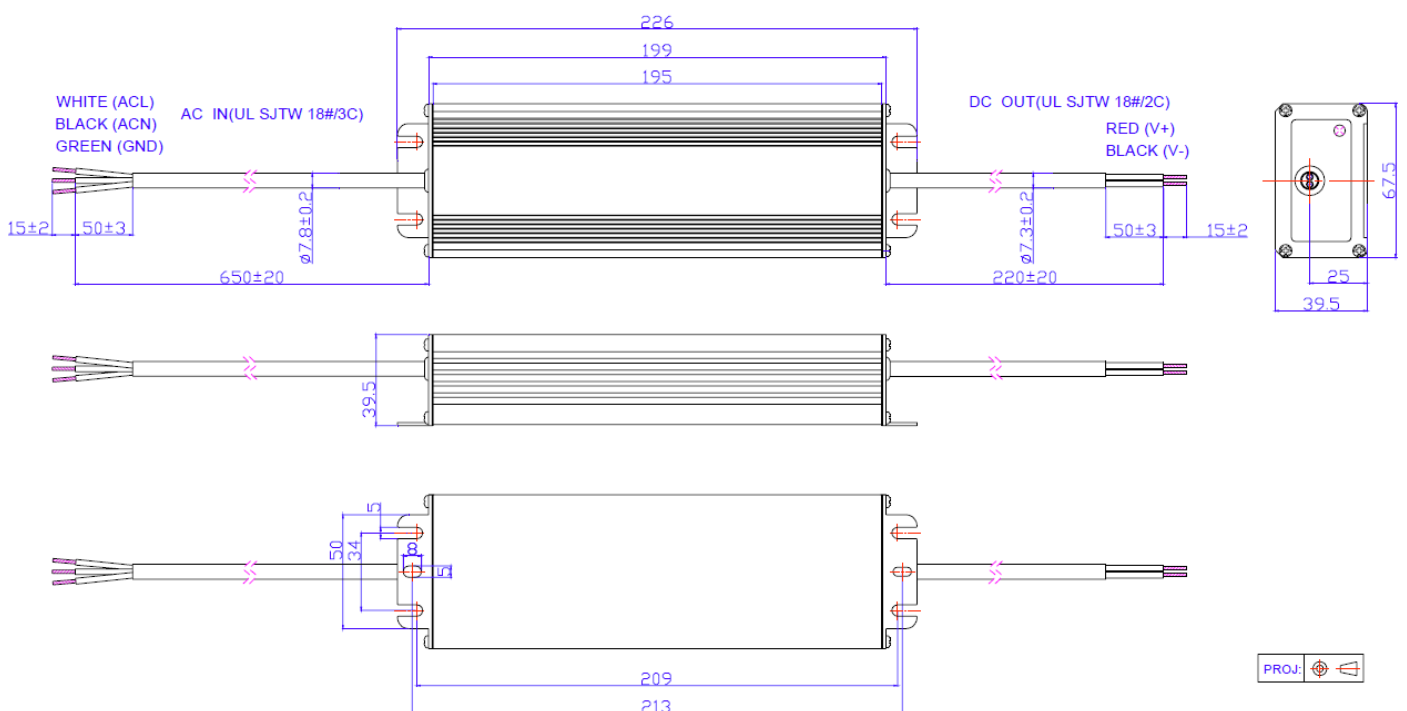


Mechanical LEDWV-150S012ST



Note: The 2 DC output cables are connected in parallel internally because one AWG #18 wire can only carry 10A. Please connect the 2 red wires together and 2 black wires together in application, or ensure each cable carries same current.

Mechanical (Others)



PART NUMBER SCHEME

LEDWV-150S012ST

LED= LED Driver

W=wide input voltage 90~305Vac

V= Constant Voltage

T= standard 3 pin UL

S=Metal case

012= Rated voltage

S=Single Output

Rated Power

SPECIFICATIONS ARE SUBJECT TO CHANGE WITHOUT NOTICE
AUTEC IS NOT RESPONSIBLE FOR ISSUES ARISING FROM ERRORS OR OMMISIONS

