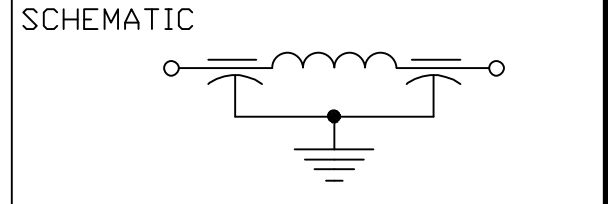


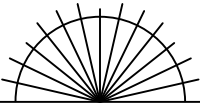
LEAD FINISH: TIN/SILVER	
EYELET FINISH: SILVER	
CAPACITANCE	1500pF GMV
TEMP. RANGE	-55°C TO 125°C
CURRENT	10AMP MAX.
WORKING VOLTAGE	85°C 350VDC MAX. 125°C 200VDC MAX.
D.C. RESISTANCE	.01ohms MAX.
MIN. I.L. PER MIL-STD-220 AT 25°C NO LOAD	
FREQ. MHz	I.L. (db)
1	--
10	5
100	45
1 GHz	70
10 GHz	--



MARKING: PART: NONE
 BAG: 1203F-050
 DATE CODE
 QTY./BAG (200 MAX.)

- NOTES:
1. SUGGESTED MOUNTING HOLE = ϕ .160
 2. THIS IS A LEAD FREE PRODUCT.
 3. MAX REFLOW IS 245° FOR 5 SECONDS.



	00	REV. NO.	TOLERANCES UNLESS OTHERWISE SPECIFIED	 ERIE, FAIRVIEW PENNSYLVANIA SPECTRUM CONTROL INC.	
	CN.30481-CPD	CHANGE NOTICE	Fractions \pm 1/64		
			Dec. .xx \pm		
			Dec. .xxx \pm .010		
			Angles \pm 0° 30'		
			CODE IDENT. NO. DLSP2	Dwn. KAUFFMAN Ckd. 09-18-06 Apvd. R. Struhchen Scale NONE	Description Pi SOLDER-IN FILTER 1203F-050